



APS



**Maynard H. Jackson Cluster
Public Hearing #1
February 15, 2017**

www.atlantapublicschools.us/schoolchanges

Revised: 02/15/2017

Agenda

Welcome & Introductions

Purpose of Meeting

Review latest proposals and receive additional feedback

Proposal for School Changes in Jackson Cluster

Q&A

Historic Context for Conversation

Change

The Jackson Cluster has seen significant change over the last 15 years— including both increased school options and the removal of public housing. These changes have resulted in under-enrolled traditional neighborhood schools that are financially inefficient and have shown mixed performance over time.

Concern

Community has expressed concern about consistent quality of PreK-12 experience within Jackson Cluster, particularly during middle school years.

Support

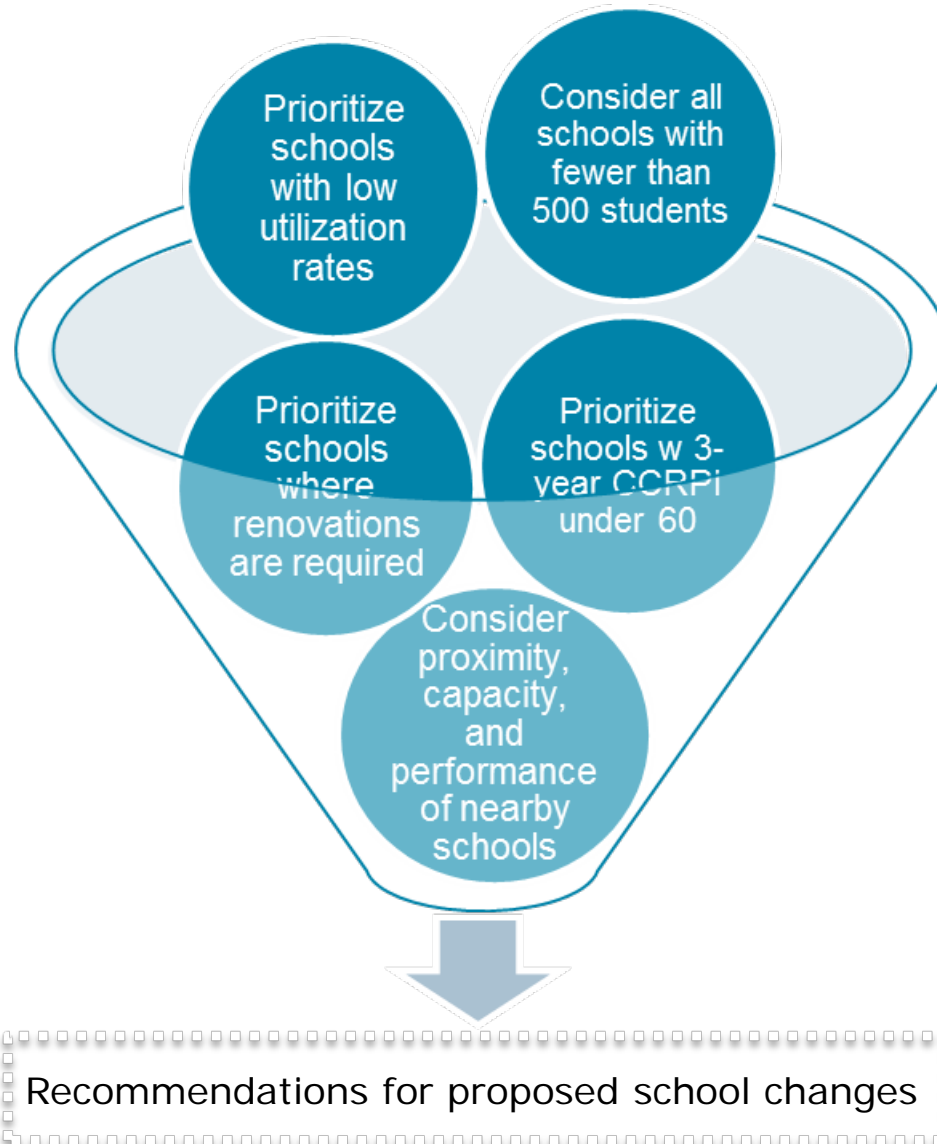
Community has requested additional support and investment to ensure new King MS is successful.

Solution

APS recognizes fatigue in community with changes that result in empty buildings without clear repurpose (i.e. Wesley Ave. ES* and Coan MS in Edgewood, East Lake ES in East Lake) and is committed to creating long-term, sustainable solutions.

Criteria for Any Recommended Changes

January 2016-Present



Proposal for Benteen & D.H. Stanton

Recommendation:

Merge Benteen Elementary and D.H. Stanton Elementary into a single school on the D.H. Stanton campus.

Staff Impact:

Consistent with past practices with merged schools, all staff from both Benteen and D.H. Stanton will be required to apply, with interview priority status, for a position at the newly merged school.

Proposed Zoning:

Reset part of zone between Benteen and Parkside Elementary to align with neighborhood boundaries. Specifically, this affects a small portion of Custer/McDonough/Guice neighborhood boarding Custer Avenue. The five families impacted by the proposed rezoning would be grandfathered in, allowing students to remain enrolled at Parkside through 5th grade.

Benteen Building:

In discussion with partners about the possibility of opening the Benteen building as an early childhood learning center.

Benteen/D.H. Stanton Rationale for Proposal

Benteen Elementary, with 310 students, currently stands as one of the smallest elementary schools in APS.

Both Benteen and D.H. Stanton have significant capacity, but D.H. Stanton has a larger building. Also, a new Sheltering Arms Early Childhood Center will open this year to serve students from six weeks through Pre-K.

Newly merged school estimated to qualify for these additional staff allotments and services:

- + 7.0 Core Teachers
- + 1.0 Expanded Core
- + 1.0 Paraprofessional
- + .50 Counselor
- + \$28,000 operating
- + \$5,000 substitutes
- + \$23,000 Flex Funds
- Gifted, EIP, ESOL, Special Ed, Nurse, Psychologist, and SSW will also increase, but awaiting exact allotments.

Benteen/D.H. Stanton Enrollment Projections

School	Current Enrollment	Planning Capacity (@22 students/room)	Projected New 2017-18 Enrollment
Benteen ES	310	528	Merged
D.H. Stanton ES	265	726	573

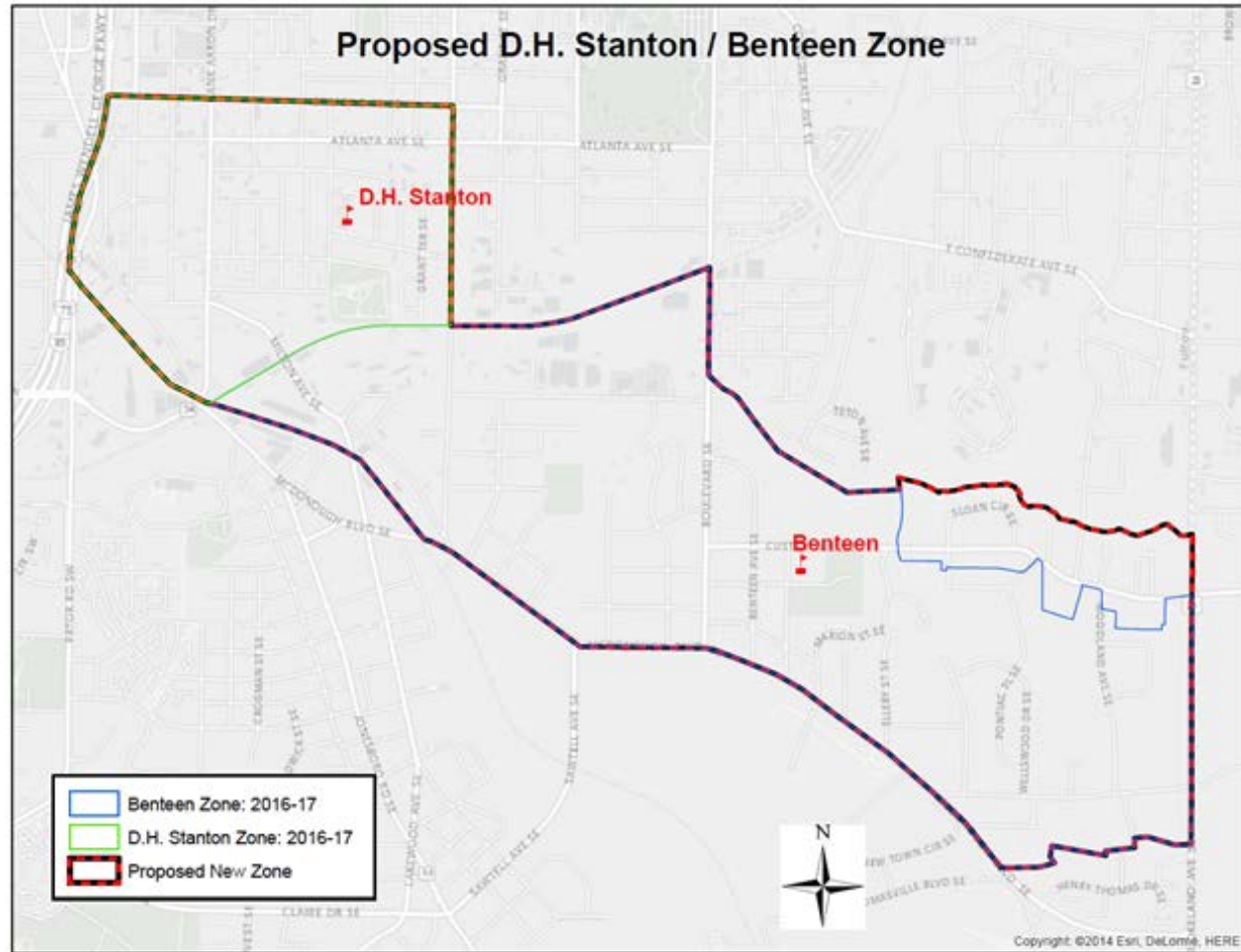
Enrollment projections for proposed merged school				
Grade	2016-17	2017-18	2018-19	2019-20
PK*	44	44	44	44
K	95	99	94	90
1	76	99	103	98
2	90	77	100	104
3	82	92	79	102
4	93	78	88	75
5	85	84	71	79
Total	565	573	579	592

*Pre-K class sizes range from 20-22 students; D.H. Stanton is anticipated to have two Pre-K classrooms with 44 available seats.

Benteen/D.H. Stanton Expected Boundary Changes

As part of proposed merger, the district would reset part of the zone between Parkside Elementary and Benteen to align with neighborhood boundaries. Specifically, this affects a small portion of Custer/McDonough/Guice neighborhood boarding Custer Avenue, which would now become a part of the merged school zone. This provides consistent zoning, as all other neighborhoods within the Jackson Cluster had been zoned as a whole.

APS has connected with the five impacted families who would be grandfathered in, allowing students to remain enrolled at Parkside through 5th grade.



Proposal for Whitefoord & Toomer

Recommendation:

Close Whitefoord; redistrict students to Toomer Elementary and Burgess-Peterson Academy.

Staff Impact:

The district will support all employees from Whitefoord with interview priority status to find other opportunities within the district as all positions will be abolished.

Proposed Zoning:

Whitefoord students who live in the Edgewood community would attend Toomer Elementary; those in the Reynoldstown community would attend Burgess-Peterson Academy.

Whitefoord Building:

Early childhood program and health clinic could potentially remain open in the Whitefoord building and a satellite center could be opened at Toomer. Conversations are ongoing with Whitefoord Inc.

Whitefoord/Toomer Rationale for Proposal

Whitefoord Elementary, with only 272 students, currently stands as one of the smallest elementary schools in APS

Toomer and Burgess-Peterson, both located in the Jackson Cluster within reasonable proximity of Whitefoord, have capacity to handle additional enrollments.

Based on district's extensive facilities assessment report from Nov. 2015, condition and suitability scores for buildings on the Whitefoord campus ranked among the lowest in the district.

Estimates to restore the buildings to original state would exceed \$7 million.

Toomer is currently scheduled for \$4 million from SPLOST for select renovations Jan.–Jul. 2022

Whitefoord/Toomer Enrollment Projections

School	Current Enrollment	Planning Capacity (@22 students/room)	Projected New 2017-18 Enrollment
Whitefoord ES	272	572	Closed
Toomer ES	351	616	569
Burgess-Peterson	388	770	457

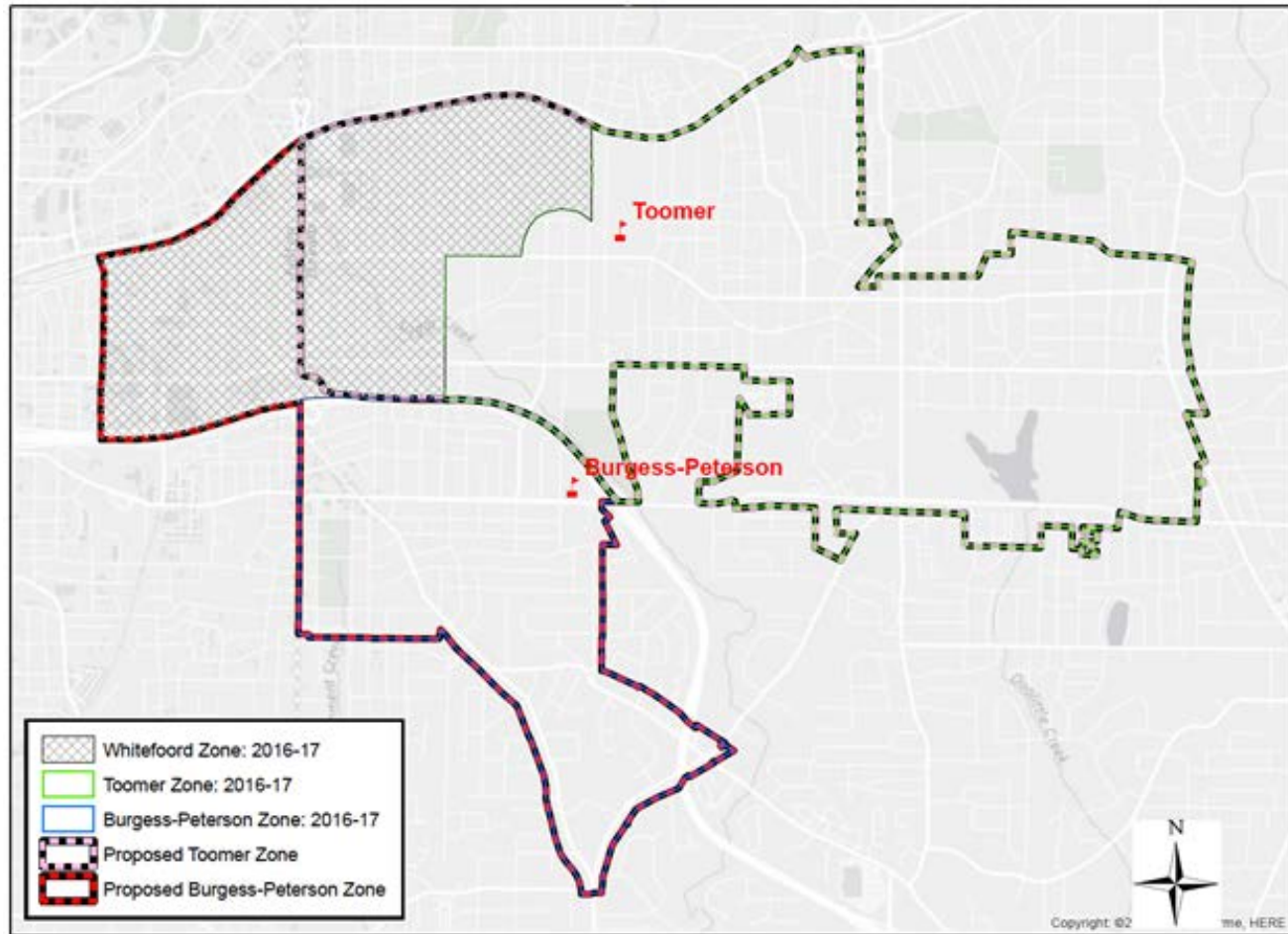
Enrollment Projections for proposed Whitefoord/Toomer			
Grade	2017-18	2018-19	2019-20
PK*	TBD	TBD	TBD
K	97	100	102
1	78	97	100
2	98	80	99
3	85	97	79
4	74	82	94
5	80	64	71
Total	512	520	545

*Whitefoord/Toomer Pre-K potentially located at Whitefoord Building
Conversations ongoing with Whitefoord Inc.

Whitefoord/Toomer Proposed Boundary Changes

With the proposed closing of Whitefoord, Whitefoord students who live in the Edgewood community would attend Toomer ES; those in the Reynoldstown community would attend Burgess-Peterson Academy.

Proposed Toomer & Burgess-Peterson Attendance Zones



Naming and Renaming of APS Facilities

The Atlanta Board of Education recognizes that the selection of a name for a facility is a vital component of its public image and will ensure that the name selected will reflect honorably on APS and the community.

5- 7 Committee Members:

- ✓ Board Member
- ✓ City Council Representative
- ✓ 3-5 from groups such as:
 - Neighborhood Planning Unit
 - School or District Administration
 - School or Cluster parent groups

Consideration will be given to names of local communities, neighborhoods, streets, landmarks, and individuals who have made a significant contribution.

Nominations will be accepted by the committee from individuals, organizations or board members.

The name recommended will not duplicate, cause confusion, or otherwise conflict with the names of existing facilities in the school system.

In the event a compelling reason to do so arises, any restrictions herein set forth may be waived by a unanimous vote of the board.

Names of individuals will be considered only after they have been deceased for five years.

Addressing Vacant Properties/Buildings

- ❖ The Board and Administration are committed to working with the community to identify appropriate uses for vacant buildings by repurposing some of its surplus properties for residential and non-residential development.
- ❖ Taskforce was named on January 9, 2017 at the Atlanta Board of Education Meeting to examine APS vacant buildings and parcels to support affordable housing.
 - Charged with bringing recommendations to the Superintendent for consideration by June 2017
 - The Taskforce's first meeting was on February 2, 2017 and the group has decided to meet at least monthly between now and June 2017
- ❖ Superintendent/Administration will continue to work on scenarios/options proposed by the Taskforce (including those unrelated to potential affordable housing efforts) for potential board action in fall 2017
 - It is their collective goal to provide a recommendation to the Board and Superintendent on what the is the best and highest use of the district's surplus properties – especially those that can be used to provide affordable housing options.
- ❖ \$2-5 million in SPLOST is earmarked for management of vacant and dilapidated buildings
- ❖ Buildings are often used for swing space, which will be needed for recently voter approved SPLOST implementation

Jackson Cluster Timeline

Key Dates and Meetings

Jan - Dec	Jan. 10	Jan. 17	Jan. 18	Jan. 23	Feb. 6	Feb. 7	Feb. 8
Various meetings and conversations with different stakeholders, parents, partners, civic leaders, etc.	Jackson Cluster Principal Meeting	Senior Cabinet leaders meet with Jackson Cluster staff about operating changes	Jackson Cluster Focus Group Meeting	Jackson Cluster Community Meeting 6 p.m. Jackson HS	Atlanta Board of Education community meeting 6 p.m. CLL	Jackson Cluster Focus Group Meeting	Benteen Parent/Caregiver Meeting Benteen ES

Feb. 15	March 1	March 6	March 7-10	March 7-24	April 1	TBD
Jackson Cluster Public Hearing 6 p.m. Whitefoord ES, 35 Whitefoord Ave. NE	Jackson Cluster Public Hearing 6 p.m. Benteen ES 200 Cassanova St. SE	Atlanta Board of Education Work Session 6p.m. CLL 130 Trinity Ave SW	HR Team meets with staff at impacted schools.	Principal conducts Interviews and hiring process.	All staff members will be notified of their employment status.	Follow-up Parent Meeting

Community Engagement

Jackson Cluster

Mays Cluster

Douglass Cluster

Dec. – Jan.	Jan. 12	Jan. 17	Jan. 17	Jan. 23-25	Jan. 23	Jan. 25
Meetings with Douglass Cluster Steering Committee & various neighborhood groups	Senior Cabinet leaders meet with Mays Cluster staff about school changes	Senior Cabinet leaders meet with Jackson Cluster staff about school changes	Lunch with Mays Community Leaders	Senior Cabinet leaders meet with Douglass Cluster staff about school changes	Jackson Cluster Community Meeting 6 p.m. Jackson HS	Douglass Cluster Community Meeting 6 p.m. Douglass HS

Jan. 26	Feb. 1	Feb. 6	Feb. 7	Feb. 9	Feb. 14.	Feb. 15
Mays Cluster Community Meeting 6 p.m. Mays HS	Mays Cluster Public Hearing 6 p.m. Adamsville ES	Atlanta Board of Education community meeting 6 p.m. CLL	Douglass Cluster Community Visit & Tour of KIPP WAYS 8 a.m. – 9 a.m.	Douglass Cluster Community Meeting 6 p.m. CSK	Douglass Cluster Community Visit & Tour of KIPP WAYS 8 a.m. – 9 a.m.	Jackson Cluster Public Hearing 6 p.m. Whitefoord ES

Feb. 22	Feb. 23	Feb. 27	Feb. 28	Mar. 1	Mar. 6
Douglass Cluster Public Hearing 6 p.m. BEST Academy	Mays Cluster Public Hearing 6 p.m. Miles ES	Douglass Cluster Public Hearing 6 p.m. CSK	Douglass Cluster Community Visit & Tour of KIPP WAYS 8 a.m. – 9 a.m.	Jackson Cluster Public Hearing 6 p.m. Benteen ES	Atlanta Board of Education community meeting 6 p.m. CLL

Q&A

**What
questions
or ideas
do you have?**



Contact Information

- General Questions
Email: externalaffairs@atlanta.k12.ga.us
- District 1 Board Member Leslie Grant
Email: lgrant@atlanta.k12.ga.us
- District 3 Board Member Matt Westmoreland
Email: mwestmoreland@atlanta.k12.ga.us
- At-Large Seat 7 Board Member & Board Chair Courtney D. English
Email: cenglish@atlanta.k12.ga.us
- At-Large Seat 8 Board Member Cynthia Briscoe Brown
Email: cbriscoe_brown@atlanta.k12.ga.us
- Superintendent Dr. Meria Carstarphen
Email: suptoffice@atlanta.k12.ga.us



APPENDIX



Enrollment Projections Data Sources/Process

- BASE: Current FTE-1 Enrollment
 - Enrollment numbers can change daily so we baseline current enrollment numbers with the FTE-1 Enrollment numbers. These numbers can be found on the Georgia Department of Education website
- Analyze historic trends by school and grade
- Analyze U.S. Census data on different age groups
- Review new residential & non-residential* permits issued by city; estimate impact on schools
- Consider approved administrative transfers
- Review grandfathering decisions due to rezoning
- Compare FTE-1 (October) and FTE-3 (March) to look for schools that gain or lose significant number of students during the school year.

NOTE: The enrollment projections that can be found online in the '2015 Facility Condition Assessment Report' were completed in 2013. The models get recalibrated after FTE-1 numbers are available. We have had three FTE-1 counts since those projections and what you are seeing now are the updated projections.

**Non-Residential Permits can include new transportation locations, shopping centers, new locations that offer employment, etc.*



**THE
KING
WAY**

Celebrating the journey we are on through
excellence, achievement, and leadership.

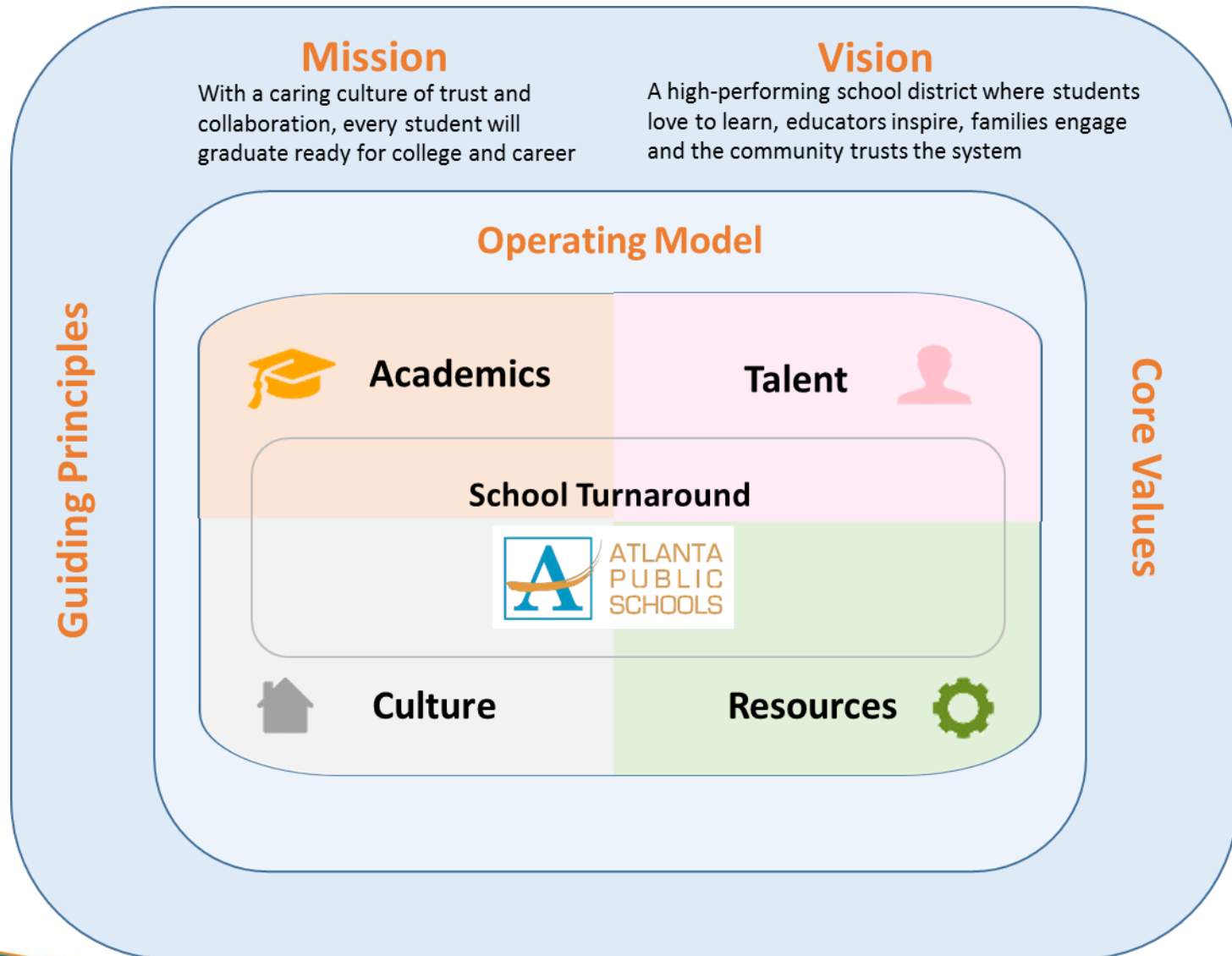
APS is

on a Journey of Transformation

STATE *of the* DISTRICT

We are now in full-scale implementation of our transformational framework. While the organization is stronger structurally, academic performance is mixed.

APS Transformation Framework

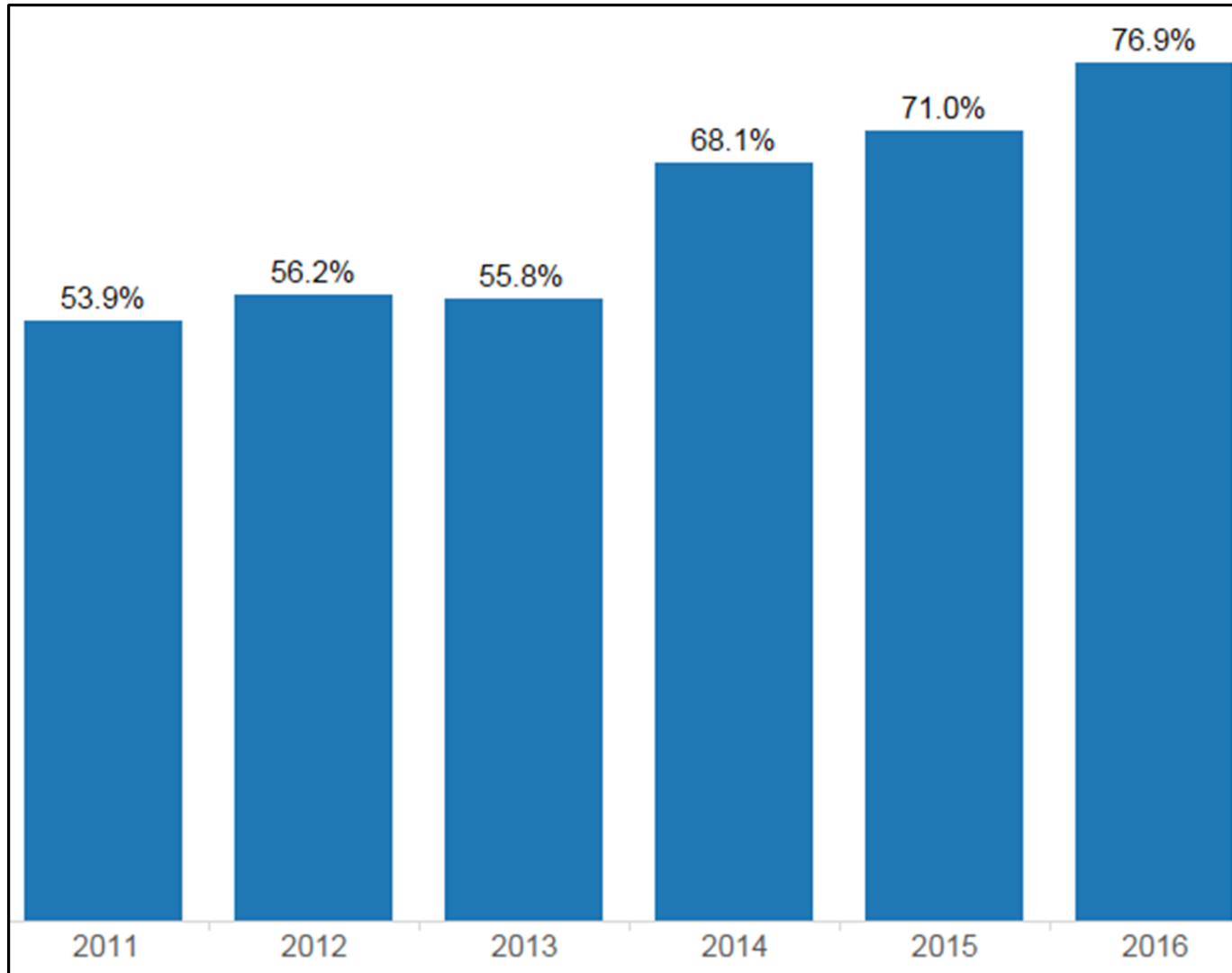


Jackson Cluster Performance – CCRPI

	2014	2015	2016	* Grand Total
ES Benteen	48.0	65.5	56.9	56.8
Burgess	78.4	74.3	80.5	77.7
DH Stanton	38.7	50.6	49.7	46.3
Dunbar	52.3	48.4	57.6	52.8
Parkside	59.9	69.3	68.7	66.0
Toomer	51.9	62.7	58.3	57.6
Whitefoord	63.9	48.9	62.0	58.3
MS King	65.4	59.1	57.4	60.6
HS Jackson	57.0	70.8	76.0	67.9

CCRPI = College & Career Ready Performance Index
 *Grand Total is the three (3) year average

Jackson HS Graduation Rate



Jackson Cluster IB Program Implementation

Apply for Candidacy ★ Consultant Visit ◆ Apply for Authorization ● Verification Visit ◻ Program Evaluation Visit ▲

Program	FY17	FY18	FY19	FY20	FY21
Jackson CP	Candidate School	◆	● ◻	Authorized World School	
Jackson DP	▲	Authorized World School			
King-Jackson MYP	Candidate School	◆	● ◻	Authorized World School	
*Benteen PYP	Consideration ★	Candidate School	◆	● ◻	Authorized World School
Burgess-Peterson Academy PYP	Candidate School	◆	● ◻	Authorized World School	
*D.H. Stanton PYP	Consideration	★	Candidate School	◆	● ◻
Dunbar PYP	Consideration ★	Candidate School	◆	● ◻	Authorized World School
Parkside PYP	Consideration ★	Candidate School	◆	● ◻	Authorized World School
F. A. Toomer PYP	Candidate School	◆	● ◻	Authorized World School	
Whitefoord PYP	Candidate School	◆	● ◻	Authorized World School	

*A merged Benteen/D.H.Stanton school, if approved would follow D.H. Stanton IB schedule

Proposed dual language program at new D.H. Stanton