The background is a vibrant yellow filled with a dense pattern of black line-art doodles. These doodles represent various educational fields: science (microscopes, globes, DNA helix, atom symbols), mathematics (calculators, paper airplanes, geometric shapes, equations like 2+2=4 and x+(1-y)=?), music (musical notes, a bell), art (pencils, paint palettes, a paintbrush), and general school items (backpacks, books, a laptop, a graduation cap, a trophy, a lightbulb, and the word 'IDEA' with a star).

Dunbar Elementary **GO** **Team** **Meeting**

4/20/2023

Agenda

I. Action Items

- A. Approval of Agenda:
- B. Approval of Previous Minutes

II. Discussion Items

- A. 2023 Spring MAP Results
- B. BASC-3 Results
- C. Needs Assessment

III. Information Items

- A. Principal's Report
 - 2022-2023 Family Engagement and/or Partnership Highlights
 - Cluster Advisory Team Report
 - GO Team Elections

IV. Announcements (add items as needed)

V. Adjournment

2023 Spring MAPS Results

Data Points to Consider

- Spring Results
- Fall to Spring Comparison
 - Literacy
 - Numeracy



Reading Spring MAP 2023

MAP Growth Achievement Level Predictions by School

Georgia Milestones Achievement Level Predictions are only made for Grades 2-8

(*Reading tests taken in Spanish are not given a GAMAS Achievement Level)

click in a school or district row to see grade level performance if there are above 10 students per grade

Data updates
nightly
during test
window.



School	Window	Exams				
DISTRICT	Spring 2022-2023	18,170	38%	27%	23%	13%

School	Window	Exams				
Dunbar	Spring 2022-2023	185	57%	30%	11%	

School	Tested Grade	Exams				
Dunbar	02	44	48%	34%	16%	
	03	33	61%	33%	6%	
	04	62	63%	23%	11%	
	05	46	54%	35%	11%	



Math Spring MAP 2023

MAP Growth Achievement Level Predictions by School

Georgia Milestones Achievement Level Predictions are only made for Grades 2-8

(*Reading tests taken in Spanish are not given a GAMAS Achievement Level)

click in a school or district row to see grade level performance if there are above 10 students per grade

Data updates
nightly
during test
window.



School	Window	Exams				
DISTRICT	Spring 2022-2023	2,805	41%	23%	20%	16%

School	Window	Exams				
Dunbar	Spring 2022-2023	33	61%	33%	6%	

School	Tested Grade	Exams				
Dunbar	02	44	48%	34%	16%	
	03	33	61%	33%	6%	
	04	62	63%	23%	11%	
	05	46	54%	35%	11%	



Math Spring MAP 2023

MAP Growth Achievement Level Predictions by School

Georgia Milestones Achievement Level Predictions are only made for Grades 2-8

(*Reading tests taken in Spanish are not given a GAMAS Achievement Level)

click in a school or district row to see grade level performance if there are above 10 students per grade

Data updates
nightly
during test
window.



School	Window	Exams				
DISTRICT	Spring 2022-2023	2,805	41%	23%	20%	16%

School	Window	Exams				
Dunbar	Spring 2022-2023	33	61%	33%	6%	

School	Tested Grade	Exams				
Dunbar	02	44	48%	34%	16%	
	03	33	61%	33%	6%	
	04	62	63%	23%	11%	
	05	46	54%	35%	11%	



Reading Fall to Spring MAP 2023

MAP Growth Achievement Level Predictions by Grade



Georgia Milestones Achievement Level Predictions are only made for Grades 2-8 tests taken in English

click a grade-level or section to generate a list of students in that category combination below

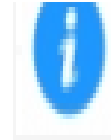


School	Window	Tested Grade	Exam	Exams			
Dunbar	Fall 2022-2023	03	Reading	35	57%	34%	9%
		04	Reading	59	47%	27%	22%
		05	Reading	45	42%	40%	18%
	Spring 2022-2023	03	Reading	33	61%	33%	6%
		04	Reading	62	63%	23%	11%
		05	Reading	46	54%	35%	11%



Math Fall to Spring MAP 2023

MAP Growth Achievement Level Predictions by Grade



Georgia Milestones Achievement Level Predictions are only made for Grades 2-8 tests taken in English

click a grade-level or section to generate a list of students in that category combination below



School	Window	Tested Grade	Exam	Exams			
Dunbar	Fall 2022-2023	03	Math	35	57%	31%	11%
		04	Math	59	41%	44%	14%
		05	Math	45	47%	51%	
	Spring 2022-2023	03	Math	33	64%	36%	
		04	Math	62	55%	32%	13%
		05	Math	46	65%	30%	



BASC-3 Data



Read Me

BASC School Profile - School

BASC Risk Type

Behavioral and Emotional Risk Index (BERI)

Subgroup Comparison



ALL

Grade

(All)

Submitted by

(All)

Timeframe

Spring 2023

Behavioral and Emotional Risk Index (BERI)

Students are given an overall BERI risk score (BERI T Score) that indicates how far their score is from the average of the norm group. The average BERI T score for the BESS is 50.

BASC Summary for Behavioral and Emotional Risk Index (BERI) by ALL

School	BASC Risk Type	Timeframe	Submitted by	Comparison Variable	Count	Extremely Elevated	Elevated	Normal
Dunbar	Behavioral and Emotional Risk Index (BERI)	Spring 2023	Student	ALL	67	12%	30%	58%
			Teacher/School official	ALL	84	17%	15%	68%

Needs Assessment

ACTIVITY



Needs Assessment

During this Needs Assessment, we will look at data from the Spring MAPS administration and identify 2-3 potential needs for the 2023-2024 school year.

This discussion will help school leadership as they begin developing the school's 2023-2024 Continuous Improvement Plan this summer.

Needs Assessment: Guiding Questions

- What does this data tell us?
- What good news is there to celebrate?
- Where are growth opportunities?
- What trends do we see in the data?

Needs Assessment:

What are two to three (2-3) needs we can identify based our data?

	Need
1	
2	
3	



Information Items-GMAS Testing Calendar

	Monday, April 24	Tuesday, April 25	Wednesday, April 26	Thursday, April 27	Friday, April 28
High School	American Lit, Section 1	American Lit, Sections 2 & 3	Make-ups	US History, Sections 1 & 2	Make-ups
	Monday, May 1	Tuesday, May 2	Wednesday, May 3	Thursday, May 4	Friday, May 5
Grade 3	ELA, Section 1	ELA, Section 2	ELA, Section 3	Math, Section 1	Math, Section 2
Grade 4					
Grade 5	ELA, Section 1	ELA, Section 2	ELA, Section 3	Math, Section 1	Math, Section 2
Grade 6	ELA, Section 1	ELA, Section 2	ELA, Section 3	Math, Sections 1 & 2	Make-ups
Grade 7					
Grade 8	Science, Sections 1 & 2 Phy Sci, Sections 1 & 2	Make-ups	Math, Sections 1 & 2	Make-ups	Social Studies, Sections 1 & 2
High School	Make-ups	Biology, Sections 1 & 2	Make-ups	Algebra 1, Sections 1 & 2 (HS and MS Alg Students)	Make-ups
	Monday, May 8	Tuesday, May 9	Wednesday, May 10	Thursday, May 11	Friday, May 12
Grade 3	Make-ups	Make-ups			
Grade 4	ELA, Section 1	ELA, Section 2	ELA, Section 3	Math, Section 1	Math, Section 2
Grade 5	Science, Sections 1 & 2	Make-ups	Make-ups		
Grade 6	Make-ups	Make-ups			
Grade 7	ELA, Section 1	ELA, Section 2	ELA, Section 3	Math, Sections 1 & 2	Make-ups
Grade 8	ELA, Section 1	ELA, Section 2	ELA, Section 3	Make-ups	Make-ups
	Monday, May 15	Tuesday, May 16	Wednesday, May 17	Thursday, May 18	Friday, May 19
Grade 4	Make-ups	Make-ups			
Grade 7	Make-ups	Make-ups			

Principal's Report



A. Principal's Report

- 2022-2023 Family Engagement and/or Partnership Highlights
- Cluster Advisory Team Report
- GO Team Elections



Insert Principal's Report

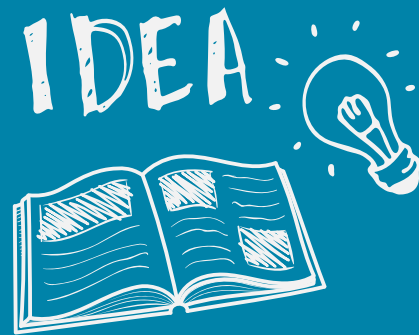
Additional Information Items

- **Cluster Advisory Team Report**
- **GO Team Elections**
 - Find candidates at apsstrongschools.com
 - Vote **APRIL 18-27**
 - Households are sent a unique link based upon information in Infinite Campus
 - School Staff will be sent a link to their APS email address

Announcements

- **GO Team Members**

- Check your email starting **May 1** for end of year survey links
 - GO Team Satisfaction Survey
 - Principal Feedback Survey
- Complete your required trainings **ASAP**
 - Contact the GO Team Office with any questions





Thank You

for yet another
great year!

