

CASCADE TIGERS' BOOK REPORT

Reading and Technology Resources November 2024



Cascade ES HRRB Reading Bowl

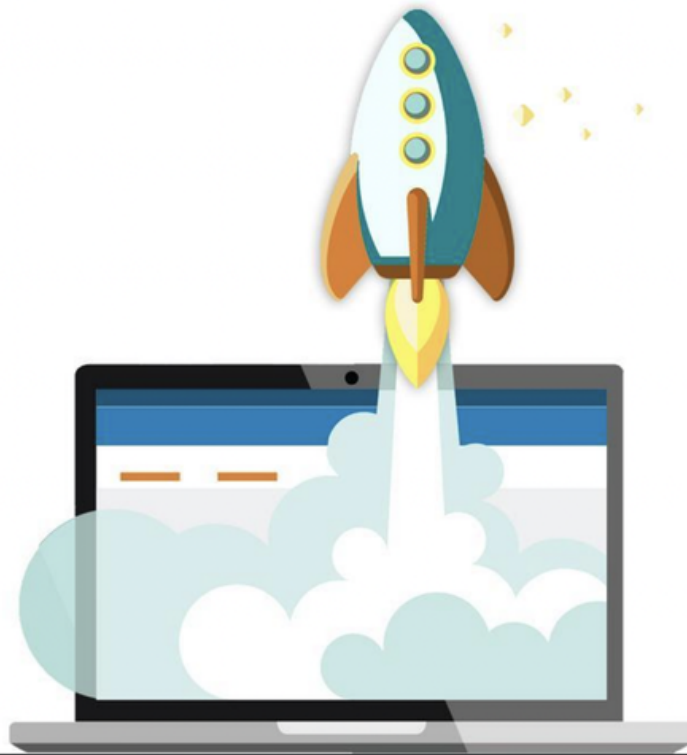
Congratulations, HRRB Picture Book Reading Bowl Team 2024. We are so proud of your for reading and competing in the district Reading competition!!



Elevate Research Skills with Britannica Launch Packs

Britannica Encyclopedia company is now a convenient app that can be easily accessed for research on all levels. In MyBackpack the GALILEO app (blue) is the link. Once you click on the app choose the BRITANNICA link for connection.

IF it asks for a UN: atlps. Passcode: packs



LaunchPacks Training Atlanta Public Schools.pdf

[Download](#)

2.1 MB

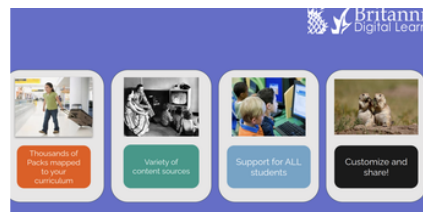
An **EFFICIENT** source of high-quality content

Diverse **CONTENT TYPES**, appropriate for students, and organized for immediate use

What Are LaunchPacks?

A **SIMPLE, FLEXIBLE** tool for sharing content that easily integrates with existing tools and platforms

A resource that encourages **ACTIVE USE** of content by students in support of critical thinking and product creation



Britannica : Useful Research tool

Launch Packs are specific 'packs' of information about a subject complete with pictures, videos and grade level readable informations.

Launch Packs: Research Made Easy

The specific topic information in Launch Packs makes fact finding so much easier for elementary students. The easy to read, easy to locate information helps students find information on any topic. Launch Packs are available for Science and Social Studies.

Britannica link

The Britannica app can be accessed in the Galileo app. <https://school.eb.com/levels/elementary>.



SCHOOL

HOME

EXPLORE

hydroponics



ALL

BOOKS

VIDEOS

READ-TO-ME

AUDIOBOOKS

Age

Reading Level

Fiction/Non-Fiction

Format

Language

Quiz

Books (1)



Let's Eat!
Sustainable Food...

Age 9 - 12
Level Z*
Pages 47



Assign

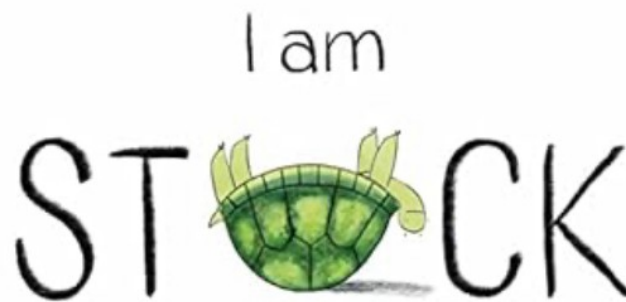
Get EPIC for Research

Do not forget to log on to getepic.com and look for non fiction books about your research topic. Read the book and see if you can use some information from that book to support your research for your project.

When you finish CITE the source of your research by writing down the title of the book, the author's name, the publishing company, the city of publication and the year of publication.

This information should be placed in the SOURCES section of your Research Google document that you have been working on for your Science Fair Project. (Check your Google classroom for details)

November SEL Book: I'M STUCK



SINCERELY, EMERSON by Emerson Weber and Jaclyn Sinquett

This wise and humorous I respect the needs and feelings of others and show concern for the world around me. STUCK reminds us that when we're feeling down, sometimes what we need most is a friend by our side—and a deep belly laugh—to help us get back on our feet again.

SEL Competency:

Social awareness allows individuals to take others' perspectives into account and to empathize with others. Socially aware students are more likely to recognize and appreciate the similarities and differences of others.

IB attribute: Caring: Caring I respect the needs and feelings of others and show concern for the world around me.

Read Along | I am Stuck (with Highlighted words!)

I am

I am



STOCK



CARING: November IB Attribute of the month

"You never really understand a person until you consider things from his point of view- until you climb inside his skin and walk around in it" (To Kill a Mockingbird)

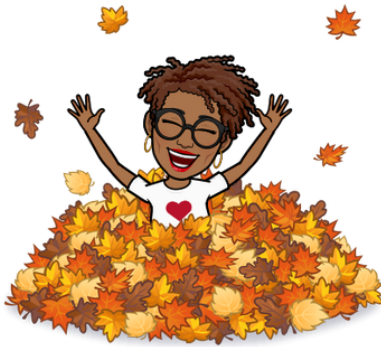
November 24 Media Center SignUp



NOVEMBER 2024 Cascade ES Learning Center SignUp

Please use the SignUp created to schedule Media Center time for classes, storytime, book circulation, Teacher led instruction, Team Teaching, computer lessons, research, Citing research sources, class novel reading or other academic opportunities for our students. Thanks for your support

[🔗 signupgenius.com](https://signupgenius.com)



Mrs. SM Williams, Media Specialist

Email: smwilliams@apsk12.org

Website: atlantapublicschools.us/cascade

Location: [2326 Venetian Drive Southwest, Atlanta, GA, USA](#)

Phone: [404.802.8113](tel:404.802.8113)

Twitter: [@CascadeESMedCtr](https://twitter.com/CascadeESMedCtr)



Sheila Williams

Sheila is using Smore to create beautiful newsletters