

### 2017 APS CCRPI Data Report

The Georgia Department of Education released 2017 CCRPI results on November 2nd. The district overall score increased 3.1 points from 65.2 points to 68.3. The overall score for the state of Georgia increased from 73.6 to 75.0.

On the CCRPI, APS achieved increases on both the achievement and progress components across all three grade bands between 2016 and 2017. In the achievement gaps component, both elementary and high school grade bands achieved gains while the middle school grade band slightly decreased. See graph below.

**Figure 1: Atlanta Public Schools CCRPI Scores by Grade Band, 2016 and 2017**



Single-year changes in school-level CCRPI scores can be temporary fluctuations, as opposed to representative of long term trends. Because of this, the tables in sections two and three below are sorted by three-year averages. This document is composed of three parts:

**Section 1: CCRPI District Trends (pages 2-4)** – This section shows changes by cluster and district progress percentages by grade and subject.

**Section 2: CCRPI Scores for the Past Three Years (pages 5-9)** – These tables report scores as reported from GADOE; scores are not combined to show effects of current and planned mergers. For schools that cross grade levels, both the grade-level score and the single score (which combines grade levels) are reported in separate tables.

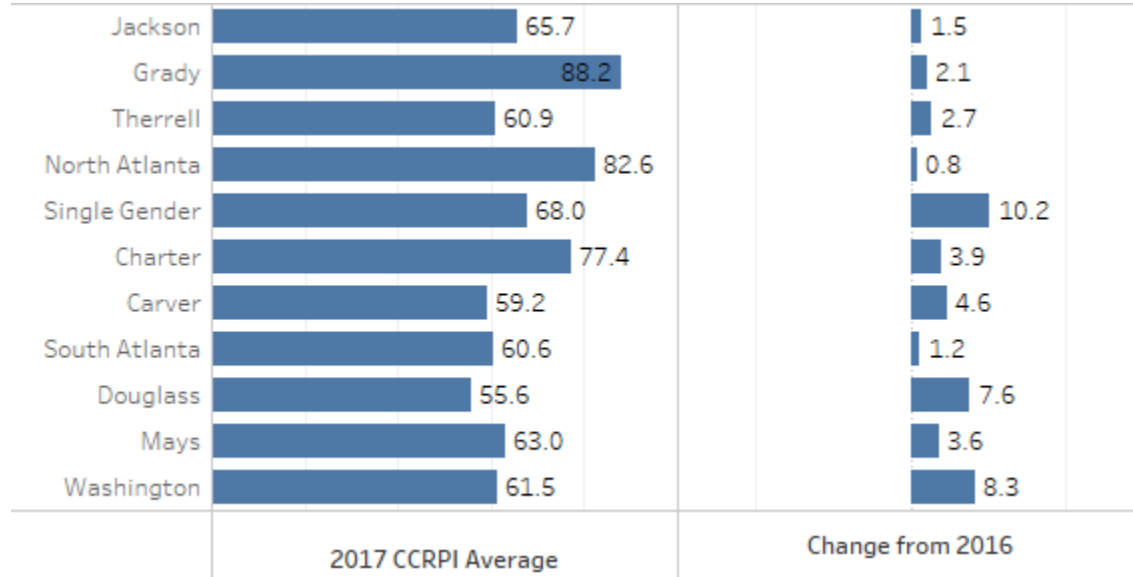
**Section 3: CCRPI Progress Percentages for the Past Three Years (pages 10-13)** – These tables report scores as reported from GADOE; scores are not combined to show the effects of current and planned mergers.

To view detailed score reports or download a spreadsheet of results, please visit the [GADOE CCRPI page](#).

**Section 1: District Trends**

Figure 2 below shows each cluster’s average CCRPI and change from 2016. All clusters saw gains with single gender schools and Washington cluster having the largest gains.

**Figure 2: Average CCRPI Scores by Cluster and Change from 2016\***

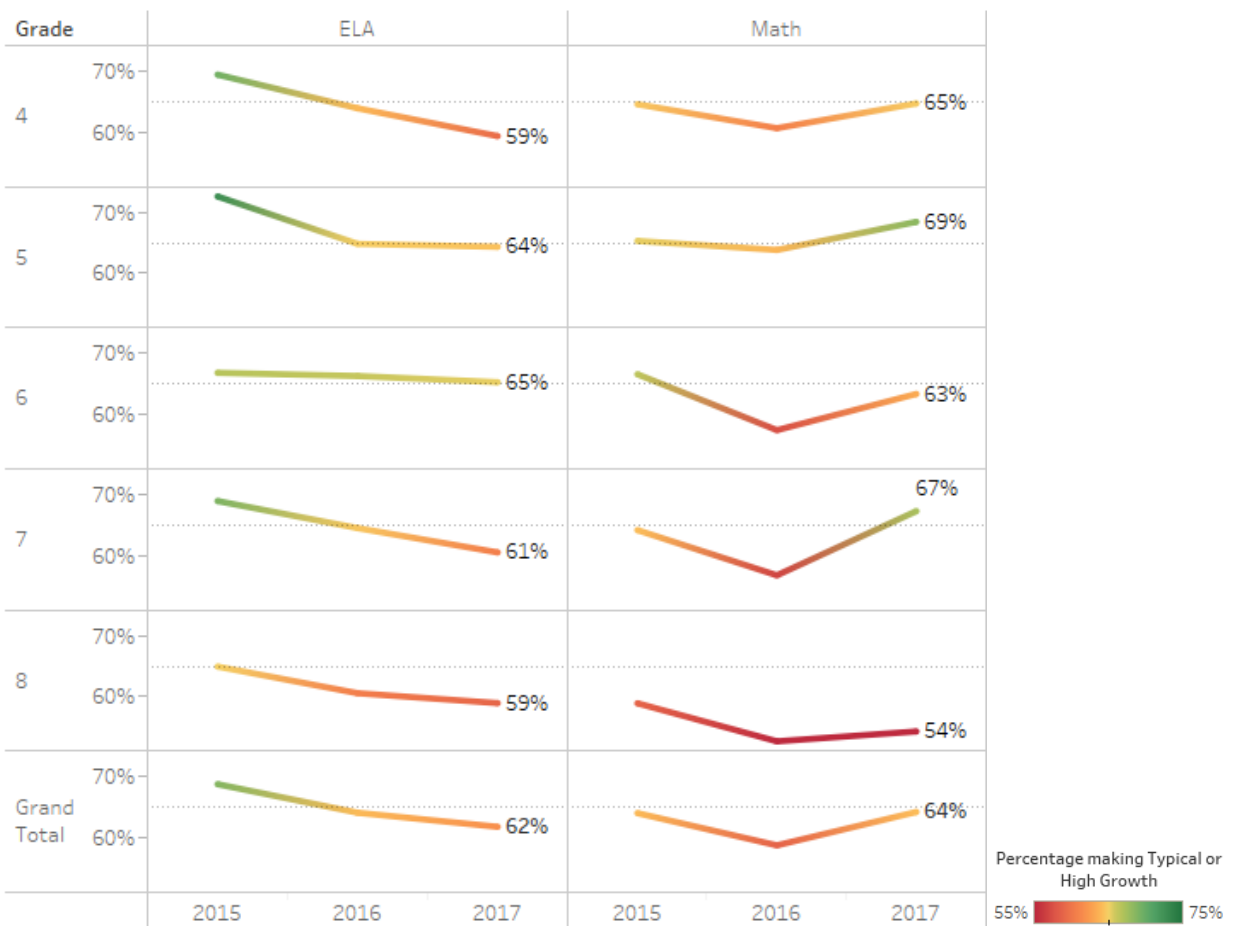


\*CCRPI cluster averages use a weighted average based on FTE count

**Section 1: District Trends (continued)**

Figure 3 below shows elementary and middle school progress percentages by grade and subject over time. Across all grades, math had the highest percentage of students making typical or high growth at 64%. Math increased by 5 percentage points compared to 2016 while ELA fell by 2 points. Beginning in the 2017 school year, only students in 5<sup>th</sup> and 8<sup>th</sup> grade are administered science and social studies end-of-grade exams. As a result, social studies and science growth percentiles are no longer calculated by the state for all students.

**Figure 3: Percentage of Students Making Typical or High Growth by Subject over Time, EOG.**  
Dotted line is the state average (65%).

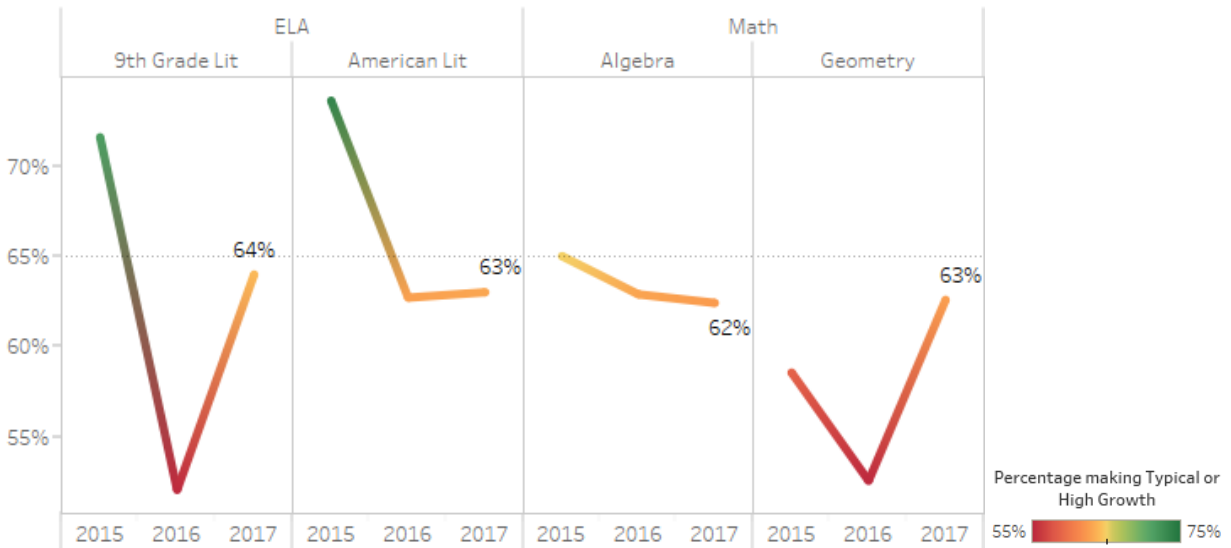


**Section 1: District Trends (continued)**

Figure 4 shows high school progress percentages by exam. Ninth grade literature had both the largest gain (+12 percentage points) and largest percentage of students making progress (64 percent). Geometry also improved by 10 points to 63 percent while American Literature remained flat and Algebra slightly decreased.

**Figure 4: Percentage of Students making Typical or High Growth by Subject over Time, EOC.**

Dotted line is the state average (65%).



**Section 2: Tables of CCRPI Scores for the Past Three Years**

**Table 1: APS Elementary School CCRPI Scores, Three-Year Average Above 60**

School	2015	2016	2017	Three Year Average
W.T. Jackson	97.7	95.4	100.7	97.9
Mary Lin	93.2	98.9	97.8	96.6
Morningside	98.2	96.5	94.7	96.5
Morris Brandon	93.5	97	98.8	96.4
Springdale Park	94.5	95.6	95.8	95.3
Drew Charter (K-5)	82.5	83.8	87.9	84.7
Sarah Smith	88	83.8	80.8	84.2
Atlanta Neighborhood Charter School (K-5)	87.1	84.5	79.6	83.7
West Manor	85.2	82.1	83.5	83.6
E Rivers	83.1	77.4	79.4	80
Burgess-Peterson	74.3	80.5	82.1	79
Garden Hills	78.6	82	75.2	78.6
KIPP STRIVE Academy (5)*	72.5	80.8	77.1	76.8
Cleveland Avenue	72.2	80.8	76	76.3
KIPP WAYS Academy (5)*	85	76.6	66.2	75.9
Kindezi (K-5)*	75	77.3	72.8	75
Beecher Hills	82.2	61.8	79.7	74.6
Wesley International Academy (K-5)*	72.8	69.6	68.1	70.2
Atlanta Classical Academy (K-5)*	61.4	71.4	74.2	69
Westside Atlanta Charter		61.1	70.6	65.9
Humphries	67.7	62.4	67.5	65.9
KIPP Vision Academy (5)*	68.1	69.9	57.8	65.3
Usher-Collier Heights	68.9	61.8	64	64.9
Centennial Academy (K-5)*	54.9	56.4	82.7	64.7
Fickett	71.4	63.5	58	64.3
Parkside	69.3	68.7	54.8	64.3
Bolton Academy	64.4	64.8	61.9	63.7
Hope-Hill	66.4	60.8	60.5	62.6
Heritage Academy	63.5	61.3	60.3	61.7
M. Agnes Jones	64.1	56.3	64.5	61.6
Dobbs	60.3	63.6	60.8	61.6
Deerwood Academy	56.7	60.5	64.6	60.6
Whitefoord	48.9	62	69.1	60
Cascade	57	57.8	65.2	60
Benteen	65.5	56.9	57.6	60

\* School crosses multiple grade bands. See Table 5 for overall score.

**Table 2: APS Elementary School CCRPI Scores, Three-Year Average Below 60**

School	2015	2016	2017	Three Year Average
F.A. Toomer	62.7	58.3	58.6	59.9
Miles	56.2	63.4	57.7	59.1
Towns	52.3	55.3	68.3	58.6
Dunbar	48.4	57.6	68.9	58.3
Slater	54.8	54.3	60.9	56.7
Continental Colony	53.1	55.4	61.1	56.5
Tuskegee Airman Global Academy	52.6	55.5	60.4	56.2
Peyton Forest	56.2	50.5	60.4	55.7
Hutchinson	58.7	46.3	61.7	55.6
Perkerson	48.1	57.6	56.9	54.2
KIPP STRIVE Primary (K-4)			54.2	54.2
Barack & Michelle Obama Academy	50.6	49.7	57.7	52.7
Gideons	47.2	51.2	58.4	52.3
Scott	53.9	47.1	53.5	51.5
Finch	56.9	44.3	52	51.1
FL Stanton	48.5	51.1	51.6	50.4
Woodson Park Academy	47.7	51	52	50.2
Kimberly	46.6	46.4	57	50
Boyd	43.2	45.2	56.3	48.2
Hollis Innovation Academy	44.7	39.7	58.6	47.7
Thomasville Heights	41.8	40.3	59.8	47.3
Fain	49.7	39.8	48.5	46

**Table 3: APS Middle School CCRPI Scores**

School	2015	2016	2017	Three Year Average
Inman	90.7	91.6	89.9	90.7
KIPP WAYS Academy (6-8)*	86.2	80.9	71.6	79.6
KIPP STRIVE Academy (6-8)*	86	79.5	73.1	79.5
Kindezi (6-8)*	86.2	76.4	70.9	77.8
Sutton	79.1	74.2	76.6	76.6
Drew Charter JA/SA (6-8)*	75.5	65.3	86.8	75.9
Centennial Academy (6-8)*	61	81.7	80.8	74.5
Atlanta Neighborhood Charter (6-8)	72.7	71.7	78.1	74.2
Wesley International Academy (6-8)*	67.7	70.5	61.6	66.6
Atlanta Classical Academy (6-8)*	58.2	60.6	79.9	66.2
KIPP Vision Academy (6-8)*	72.8	54	67.5	64.8
Coretta Scott King Young Women's Leadership Academy (6-8)*	56.1	59.5	68.5	61.4
Sylvan Hills	60.2	57.8	58.8	58.9
King	59.1	57.4	58.2	58.2
Brown	56.2	58.9	53	56.0
Bunche	56.3	57	54.6	56.0
B.E.S.T. Academy (6-8)*	51.8	48.3	60.5	53.5
Young	55.9	50.2	53.7	53.3
Long	51	51.3	57.2	53.2
Price	54.3	52.1	51.9	52.8
Harper-Archer	44.5	42.8	44.4	43.9

\*School crosses multiple grade bands. See Table 5 for overall score.

**Table 4: APS High School CCRPI Scores**

School	2015	2016	2017	Three Year Average
Carver Early College	101.7	97.3	91.9	97.0
Drew Charter JA/SA (9-12)*	72.4	79.7	91.5	81.2
Atlanta Classical Academy (9-10)*		85.7	72.8	79.3
North Atlanta	76.4	78.9	81.7	79.0
KIPP Atlanta Collegiate High School	85.2	76	72.9	78.0
Grady	70.5	72.4	83.6	75.5
Maynard H. Jackson	70.8	76	75.6	74.1
Coretta Scott King Young Women's Leadership Academy (9-12)*	72.6	66.3	72.8	70.6
Therrell	67.1	62.1	68.2	65.8
South Atlanta	70.6	67.9	55.6	64.7
Mays	67.4	62.1	62.1	63.9
Washington	68.5	53.5	68.4	63.5
B.E.S.T. Academy (9-12)*	58.2	58.1	69.6	62.0
Douglass	57.8	47	61.2	55.3
Carver	61.1	50.1	52.4	54.5
Carver Tech	43	56.5	53.6	51.0
Crim	36.9	31.8	55.7	41.5
Forrest Hill Academy (9-12)*	31.8	25.1	36.8	31.2

\*School crosses multiple grade bands. See Table 5 for overall score.



**Table 5: APS CCRPI Scores, Schools that Cross Grade Bands**

School	2015	2016	2017	Three Year Average
KIPP STRIVE Academy	82.6	79.8	74.1	78.8
KIPP WAYS Academy	85.9	79.8	70.3	78.7
Drew Charter JA/SA	74.4	71.7	89.1	78.4
Kindezi	77.4	77.2	72.4	75.7
Wesley International Academy	71.5	69.9	66.0	69.1
Atlanta Classical Academy	60.3	69.6	75.5	68.5
Centennial Academy	55.6	60.7	82.3	66.2
Coretta Scott King Young Women's Leadership Academy	63.8	62.8	70.8	65.8
KIPP Vision Academy	71.8	57.7	65.0	64.8
B.E.S.T. Academy	54.5	52.8	65.2	57.5
Forrest Hill Academy	30.6	24.4	36.8	30.6

**Section 3: Tables of CCRPI Progress Percentages for the Past Three Years**

CCRPI progress scores are based on the percentage of students making typical or high growth in ELA and math. The state average is 65%.

Elementary school progress points measure growth in 4<sup>th</sup> and 5<sup>th</sup> grade, which is only one third of an elementary school. Use this data alongside the district's [school profiles](#) for a more complete picture of a school.

**Table 6: APS Elementary Schools: Percentage of Students Making Typical or High Growth, Three-Year Average At or Above 65%**

School	2016	2017	Three Year Average
Morris Brandon	77%	75%	77%
Mary Lin	74%	73%	76%
W.T. Jackson	69%	79%	76%
Cleveland Avenue	75%	73%	74%
KIPP STRIVE Academy (5)*	74%	74%	73%
Springdale Park	71%	70%	73%
Beecher Hills	59%	82%	72%
Atlanta Neighborhood Charter (K-5)	72%	65%	71%
West Manor	69%	70%	71%
Burgess-Peterson Academy	70%	69%	71%
Kindezi (K-5)*	71%	67%	70%
Fickett	74%	60%	70%
Usher-Collier Heights	64%	65%	70%
Garden Hills	70%	66%	70%
Morningside	65%	68%	69%
E Rivers	64%	72%	69%
Sarah Smith	66%	64%	69%
Hope-Hill	76%	58%	69%
Humphries	64%	71%	68%
Cascade	65%	68%	66%
Heritage Academy	68%	58%	65%
Deerwood Academy	68%	63%	65%
Parkside	70%	52%	65%
Drew Charter (K-5)	65%	71%	65%
Dobbs	62%	62%	65%

\*School crosses multiple grand bands.

**Table 7: APS Elementary Schools: Percentage of Students Making Typical or High Growth, Three-Year Average Below 65%**

School	2016	2017	Three Year Average
Centennial Academy (K-5)*	60%	80%	64%
Dunbar	58%	70%	64%
Benteen	62%	61%	64%
KIPP Vision Academy (5)*	74%	57%	64%
Perkerson	65%	64%	63%
Whitefoord	64%	70%	63%
Towns	56%	71%	63%
Barack & Michelle Obama Academy	57%	63%	63%
Hollis Innovation Academy	48%	63%	63%
Continental Colony	60%	63%	62%
Tuskegee Airman Global Academy	61%	62%	62%
Bolton Academy	59%	55%	62%
KIPP WAYS Academy (5)*	59%	59%	62%
Wesley International Academy (K-5)*	55%	58%	61%
Peyton Forest	52%	60%	61%
M. Agnes Jones	56%	62%	61%
Finch	57%	59%	61%
Miles	65%	59%	60%
Thomasville Heights	52%	71%	60%
Hutchinson	53%	63%	59%
Slater	56%	60%	59%
Kimberly	52%	61%	58%
Boyd	53%	63%	58%
Woodson Park	57%	56%	58%
F.L. Stanton	59%	53%	57%
Gideons	60%	64%	57%
F.A. Toomer	52%	52%	57%
Fain	45%	54%	54%
Scott	46%	50%	53%
Westside Atlanta Charter (K-5)*	32%	64%	53%
Atlanta Classical Academy (K-5)*	60%	53%	53%
KIPP STRIVE Primary (K-4)		35%	35%

\*School crosses multiple grand bands.

**Table 8: APS Middle Schools: Percentage of Students Making Typical or High Growth**

School	2015	2016	2017	Three Year Average
Inman	79%	75%	74%	76%
Centennial Academy (6-8)*	66%	76%	76%	74%
KIPP STRIVE Academy (6-8)*	81%	70%	67%	72%
KIPP WAYS Academy (6-8)*	78%	70%	63%	70%
Coretta Scott King Young Women's Leadership Academy (6-8)*	67%	64%	73%	68%
Kindezi (6-8)*	76%	58%	69%	67%
KIPP Vision Academy (6-8)*	73%	56%	70%	66%
Sutton	70%	64%	64%	66%
Atlanta Neighborhood Charter (6-8)	68%	63%	64%	65%
King	68%	58%	63%	63%
Drew Charter JA/SA (6-8)*	63%	53%	70%	62%
Sylvan Hills	62%	57%	60%	60%
Wesley International Academy (6-8)*	65%	60%	55%	59%
Atlanta Classical Academy (6-8)*	60%	54%	64%	59%
Long	56%	59%	61%	59%
Brown	60%	57%	56%	58%
Price	60%	54%	56%	57%
Young	60%	53%	57%	57%
B.E.S.T. Academy (6-8)*	54%	51%	65%	56%
Bunche	59%	55%	54%	56%
Harper-Archer	54%	48%	50%	51%
Forrest Hill Academy (6-8)*	40%	24%	38%	36%

\*School crosses multiple grand bands.

**Table 9: APS High Schools: Percentage of Students Making Typical or High Growth**

School	2015	2016	2017	Three Year Average
Crim	50%	40%	77%	55%
Carver Early College	86%	74%	70%	77%
North Atlanta	75%	65%	68%	69%
Maynard H. Jackson	72%	67%	68%	69%
Drew Charter JA/SA (9-12)*	60%	69%	70%	67%
B.E.S.T. Academy (9-12)*	67%	57%	70%	65%
Washington	69%	56%	68%	64%
Therrell	69%	57%	66%	64%
Coretta Scott King Young Women's Leadership Academy (9-12)*	67%	59%	65%	63%
South Atlanta	69%	65%	55%	63%
Grady	60%	53%	66%	60%
Atlanta Classical Academy (9-10)*		68%	55%	60%
Douglass	61%	46%	64%	58%
Carver Tech	55%	62%	39%	58%
Mays	64%	49%	59%	57%
KIPP Atlanta Collegiate High School	64%	49%	61%	57%
Carver	63%	46%	55%	55%
Forrest Hill Academy (9-12)*	43%	28%	44%	39%

\*School crosses multiple grand bands.