

**Finch ELEMENTARY
GO TEAM MEETING**

September 7, 2023

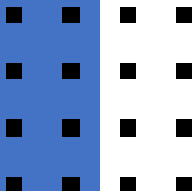


GO TEAM MEMBERS 2023-2024

Roll Call



NAME	ROLE
Dr. Tara Spencer	Principal
Ms. Ieshia Freeman	Parent
Ms. Terrion Moody	Parent
Ms. Shaneka Parks	Parent
Ms. Seggee Davis	Staff
Ms. Tesia Germain	Staff
Ms. Erin Gore	Staff
Mr. Terry Lee	Community Member
VACANT	Community Member
VACANT	Swing Seat



Today's Agenda

- I. Call to order
- II. Meeting Protocols
 - a. Roll Call
 - b. Establish Quorum
- III. Action Items
 - a. Approval of Agenda
 - b. Fill Vacant Position- Swing Seat
 - c. Fill Open Community Member Seat
 - d. Approval of Previous Minutes: May 11, 2023
 - e. Election of Officers
 - i. Chair
 - ii. Vice-Chair
 - iii. Secretary
 - IV. Cluster Representative
 - f. Review and Approve Public Comment Format
 - g. Review, Confirm/Update, and Adopt Go Team Meeting Norms
 - h. Review/Confirm 2023-2024 Go Team Meeting Calendar
- IV. Information Items
 - a. Enrollment
 - b. Assessment Overview
 - c. Signature Program- STEM/STEAM
- V. Announcements
 - a. Next Meeting- TBA
 - B. APS ROCKS 5K and Fun Run- H.J. Russell West End Academy at 8:30AM
 - C. SEL Spirit Week – Sept. 11-15
 - D. Attendance Awareness Spirit Week- Sept. 18- 22



Action Items

Action Items



- Approval of Agenda
- Fill Open Swing Seat
- Fill Open Community Seat
- Approval of Previous Minutes
- Election of Officers
 - Chair
 - Vice Chair
 - Secretary
 - Cluster Representative
- Review and Approve Public Comment Format
- Review, Confirm/Update Go Team Meeting Norms
- Vote on GO Team Meeting Calendar Dates

Finch's Public Comment Format

- Opportunities for public comment are available for Finch Elementary School GO TEAM to hear from members of the community.
- If the meeting is held virtually, stakeholders wishing to provide comment during GO TEAM meetings should join the link at least 10 minutes before the meeting begins and sign in.
- If the meeting is held face to face, stakeholders wishing to provide comment during GO TEAM meetings should arrive at the Finch Elementary Media Center at least ten (10) minutes before the meeting begins and sign in. Stakeholders' comments will be heard in the order in which individuals signed in.
- Twenty (20) minutes of time during the GO TEAM meeting will be offered to the public to make comments. Everyone is asked to please plan to speak no more than two (2) minutes.
- GO TEAM members will not provide response or engage in direct conversation during meetings.

Let's commit to:



- This is a meeting of the Go-Team. Only members of the team may participate in the discussion. Any members of the public present are here to quietly observe.
- We will be fully present.
- We will follow the agenda as noticed to the public and stay on task.
- We will be respectful of each other at all times.
- We will be open-minded.
- We invite and welcome contributions of every member and listen to each other.
- We will respect all ideas and assume good intentions.
- We will approach differences of opinion with curiosity.

Task: Set Go-Team Calendar (23-24)





Principal's Report

TOPICS

- Peek into our School day!
- School Start Update-
 - Current Enrollment & Leveling
- Assessment Overview-
 - GMAS Results
 - MAP Results
- Signature Program Updates-
 - Learner Profile
 - STEAM Event- August 31, 2023



**Peek into our
classrooms**



Conversation on Enrollment and Leveling

What is leveling?

Leveling is the process Atlanta Public Schools utilizes to balance allocations based on **actual** student enrollment versus **projected** student enrollment, as projected enrollment was utilized to staff schools for Day One readiness. After monitoring the student enrollment data closely, APS is committed to executing leveling in a manner that is least disruptive to the instructional program. Please review the Leveling Guidelines attached, to access the detailed process, leveling procedures, and timeline.

See below Leveling data for **Finch Elementary**.

- Projected enrollment: **335**
- Day 15 enrollment: **288**
- Difference in enrollment: **-47**
- Change at Base Weight \$5,193: \$ **-244,071.00**
- Reserves: \$**77,445.19**
- Title I -Family Engagement Adjustment: \$ **3,090.00**
- Carryover of unspent FY2023 non-personnel funds: \$ **23,938.71**
- Prorate Losses 50%: \$ **122,035.50**
- Total Adjustment: \$ **-17,561.60**

Principal's Recommendations:

Use vacant PARA position to cover the leveling expense.

Georgia Milestones Assessment Results

GMAS

Finch Elementary School Achievement Level Data

Please remember that this data is embargoed and should not be shared outside of its intended purposes.

Achievement Level Breakdown: Finch

school	Test Subject	Grade	year	Comparison..	Tested			
Finch	ELA	All	2022	All	146	57%	32%	11%
			2023	All	147	60%	23%	14%
	Math	All	2022	All	145	65%	26%	9%
			2023	All	147	49%	31%	18%
	Sci	All	2022	All	43	49%	37%	14%
			2023	All	36	47%	39%	8%

GMAS

Finch Elementary School Achievement Level Data **SWD Comparisons**

Please remember that this data is embargoed and should not be shared outside of its intended purposes.

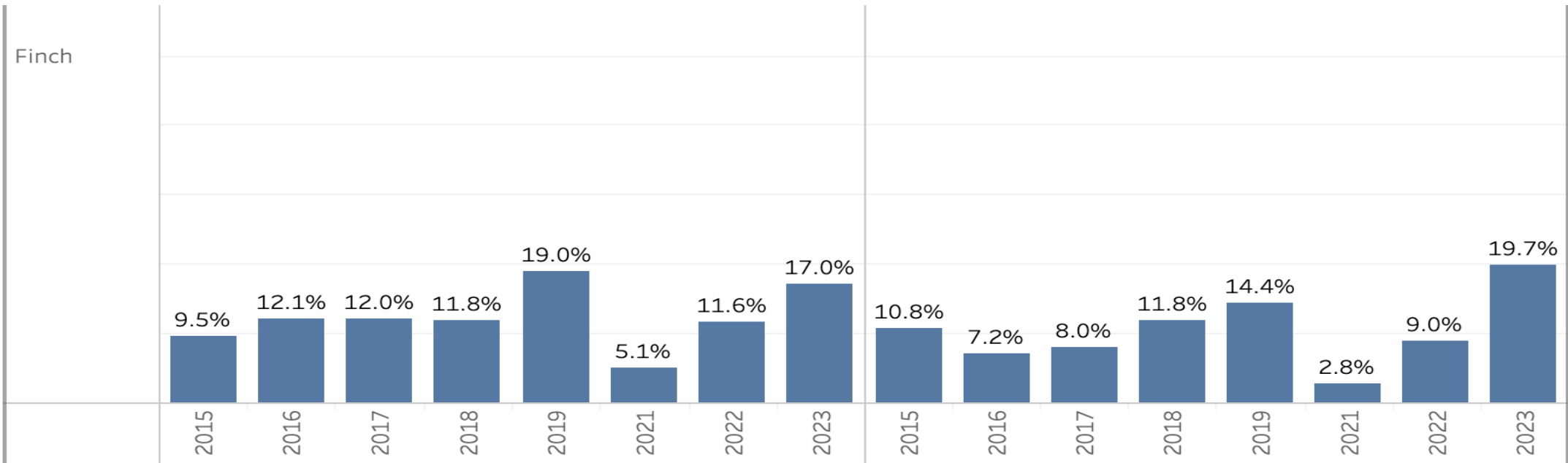
Achievement Level Breakdown: Finch						
school	Test Subject	Grade	year	Comparison..	Tested	
Finch	ELA	All	2022	Not SWD	130	52% 35% 12%
				SWD	16	94% 6%
			2023	Not SWD	130	57% 25% 15%
				SWD	17	82% 12% 6%
	Math	All	2022	Not SWD	130	62% 28% 10%
				SWD	15	93% 7%
			2023	Not SWD	130	45% 33% 20%
				SWD	17	76% 18% 6%
Sci	All	2022	Not SWD	37	43% 41% 16%	
			SWD	6	83% 17%	
		2023	Not SWD	32	44% 44% 6% 6%	
			SWD	4	75% 25%	

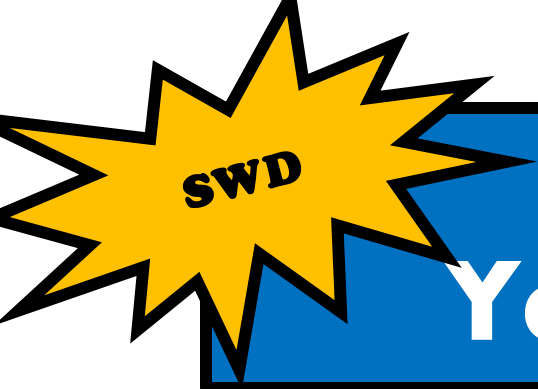
GMAS

Finch Elementary School Year by Year Comparison Data

English Language Arts

Math

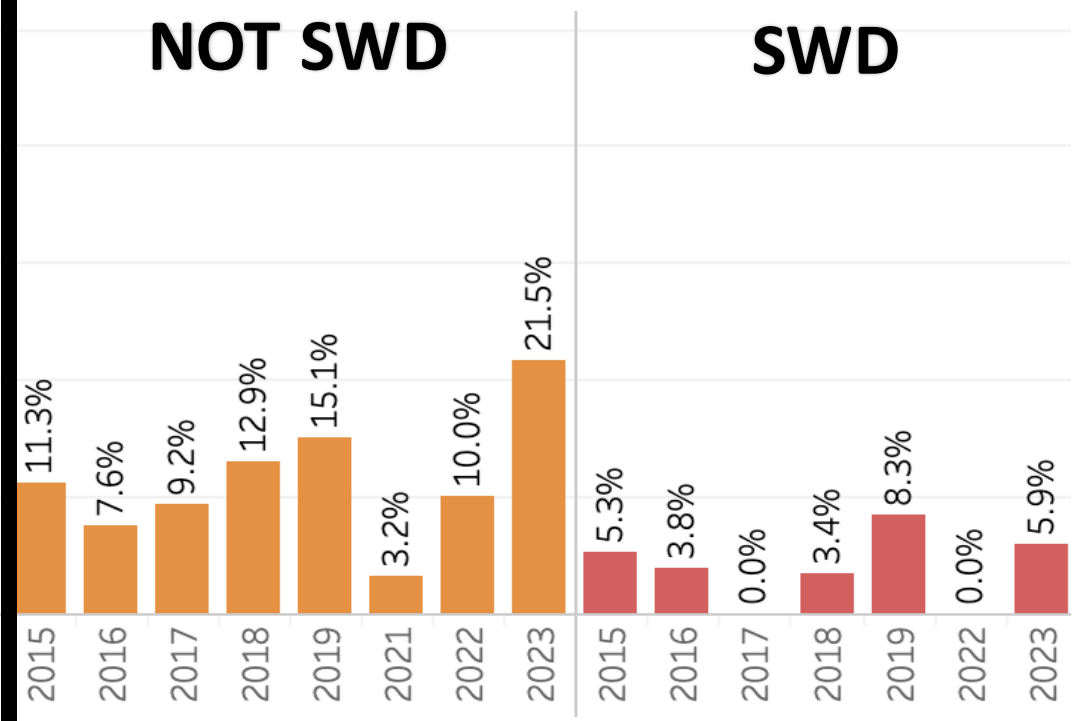
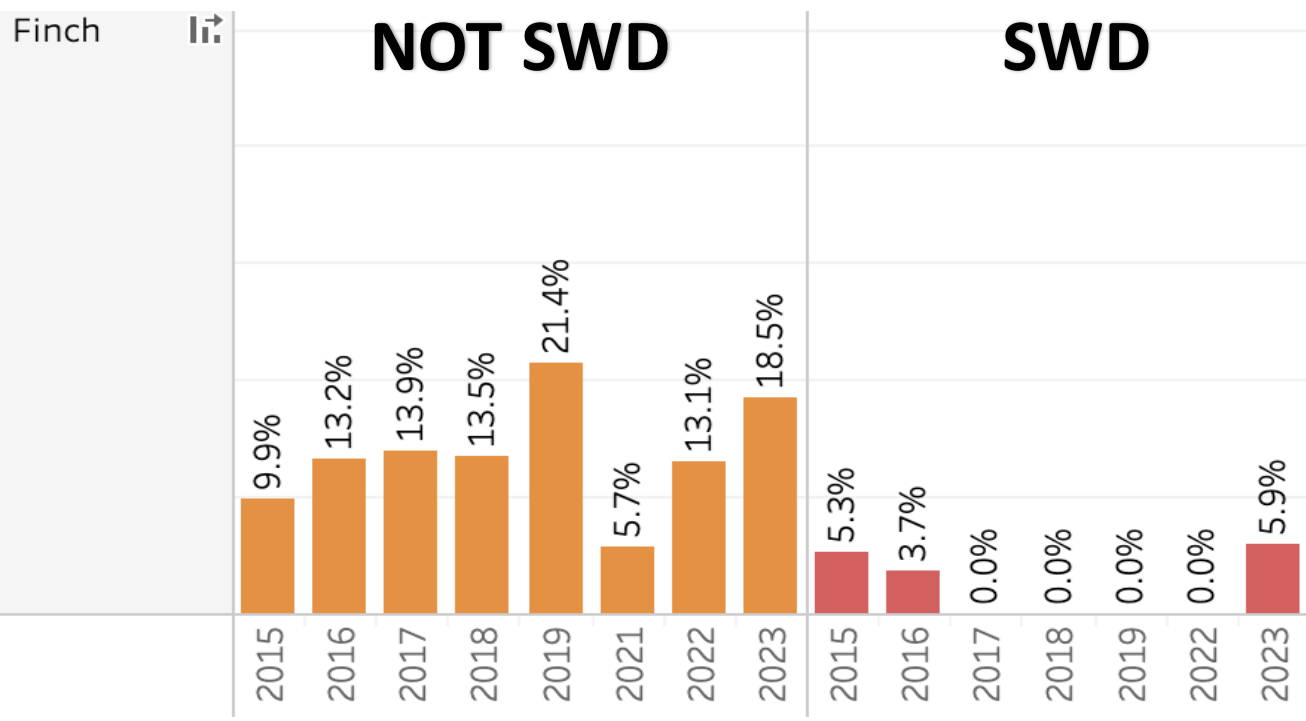




Finch Elementary School Year by Year Comparison Data

English Language Arts

Math



FALL MAP RESULTS

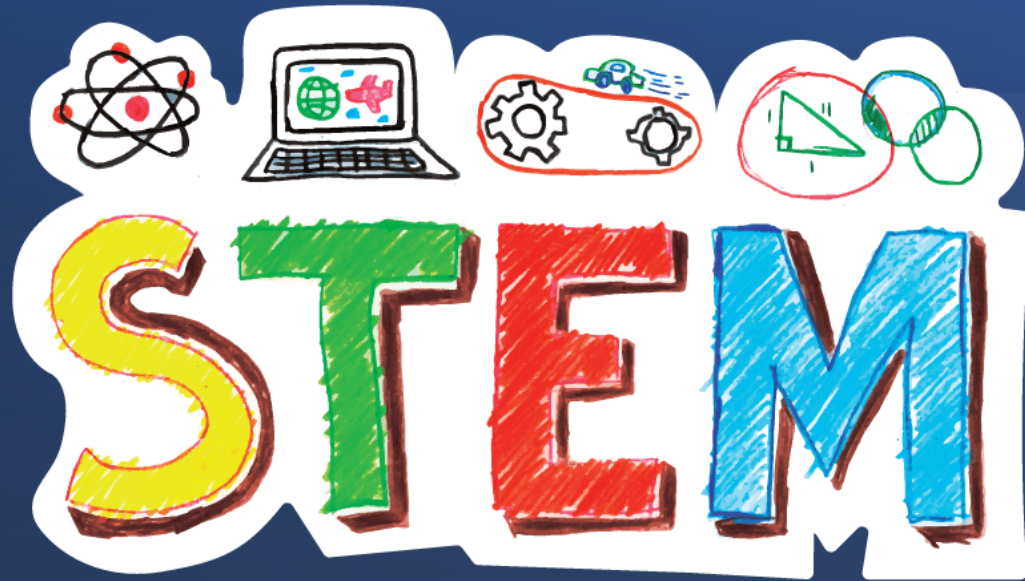
School	Window	Grade	Exam	Exams			
Finch	Fall 2023-2024	02	Math	46	35%	57%	7%
			Reading	45	53%	38%	
		03	Math	44	48%	39%	14%
			Reading	47	57%	23%	15%
		04	Math	45	47%	44%	9%
			Reading	44	50%	36%	9%
		05	Math	53	55%	38%	8%
			Reading	57	58%	26%	16%

FALL MAP FLUENCY RESULTS

Performance Level

- Exceeds Expectation
- Meets Expectation
- Approaching Expectation
- Below Expectation

Metric	Window	Exams with Metric scores				
Picture Vocabulary	Fall 2023-2024	47	28%	19%	43%	11%
Listening Comprehension	Fall 2023-2024	47	32%	9%	55%	
Phonics Word Recognition	Fall 2023-2024	47	17%	36%	21%	26%
Phonological Awareness	Fall 2023-2024	47	17%	45%	6%	32%
Sentence Reading Fluency	Fall 2023-2024	25	28%	60%		12%



UPDATES

Quarter 1 Focus:

- Learner Profile and the Qualities of a STEAM student!
- ARTS Integration



The image features large, stylized text. The word 'Time' is positioned above the word 'We'. The letters are thick and rounded. 'Time' is colored in shades of blue and orange, while 'We' is colored in shades of green and purple. The letters overlap, creating a layered effect.

- **APS Rocks 5K and Fun Run**
 - Location: H.J. Russell West End Academy at 8:30AM
 - When: Saturday, Sept. 9th
- **SEL Spirit Week**
 - When: Sept. 11th - Sept. 15th
- **Attendance Awareness Spirit Week**
 - When: Sept. 18th – Sept. 22nd



Questions



**MEETING
ADJOURNED**

