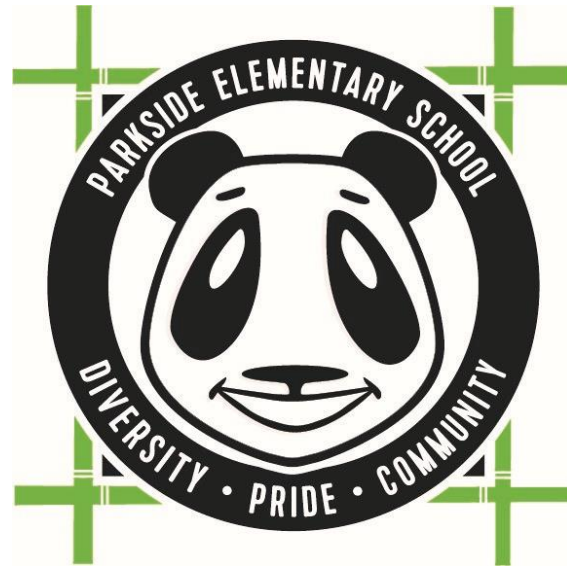
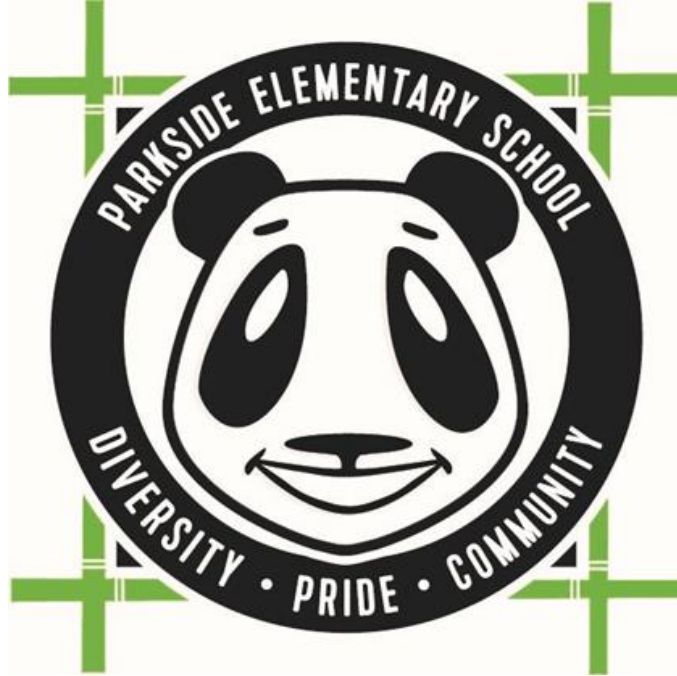


PARKSIDE ELEMENTARY SCHOOL 2019-2020



State of the School



New staff

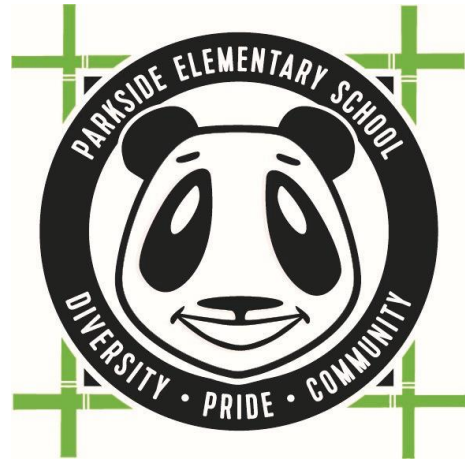
Ms. Alexander - 4th Grade Teacher

Ms. Byrd - 5th Grade Teacher

Ms. L. Miles - Kindergarten Teacher (CREAT Grad)

Ms. Fulmer - First Grade Teacher (CREAT Grad)

Ms. Willit - Speech



MISSION STATEMENT

**GROUNDING IN SELF-AWARENESS AND
DIVERSE PERSPECTIVES, EVERY STUDENT
WILL BE AN EMPATHETIC CRITICAL
THINKER READY TO SUCCEED
ACADEMICALLY, SOCIALLY, AND
CREATIVELY.**

As a member of the Parkside Pandas team, I commit to...

- ▶ Providing bell to bell student engagement using research based instructional strategies that meet the learning Diversity of all students.
- ▶ Creating a safe, positive and inviting learning environment from the media center to the cafeteria that shows a your high level of School Pride.
- ▶ Building a work place that is respectful to all ideas and opinions and fosters a culture of collaboration, team and Community.



Demographics

577 Students Pre K-5th Grades

► Pre K	44	44 (wait list of more than 30 students)
► Kindergarten	95	103
► 1 st Grade	96	83
► 2 nd Grade	83	80
► 3 rd Grade	88	88
► 4 th Grade	88	81
► 5 th Grade	83	83

Operational Budget

\$5,966,806



2018-2019 Student Assessment Data

- ▶ Georgia Milestones - Grades 3-5
- ▶ STAR - K-2



Choose Aggregate Level
Proficient and Above

Year over Year Milestones Comparison for Parkside

Grade
All

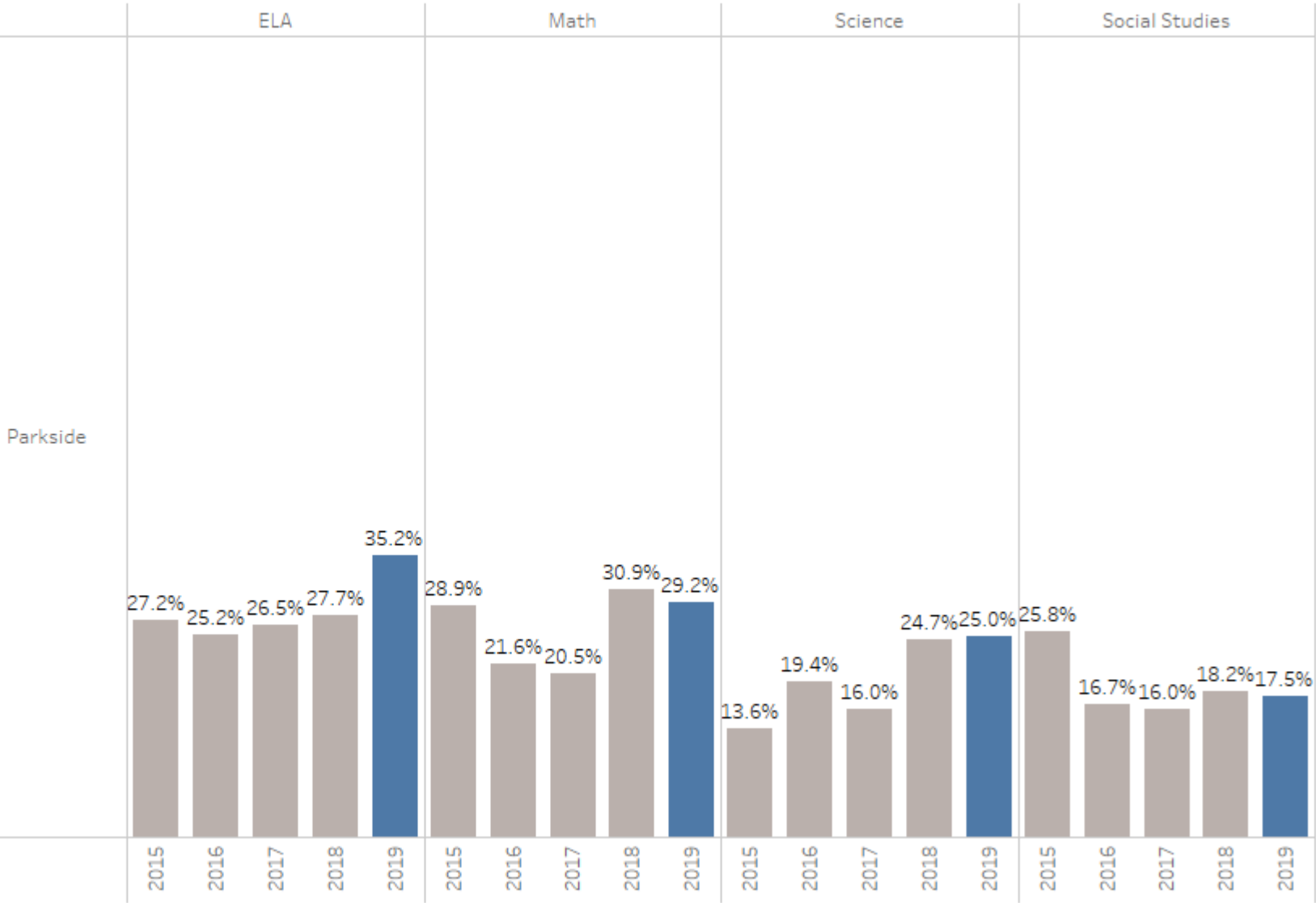
Ethnicity
All

Gifted Enrollment
All

ELL
All

SWD
All

Gender
All



Choose Aggregate Level
Developing and Above

Year over Year Milestones Comparison for Parkside

Grade
All

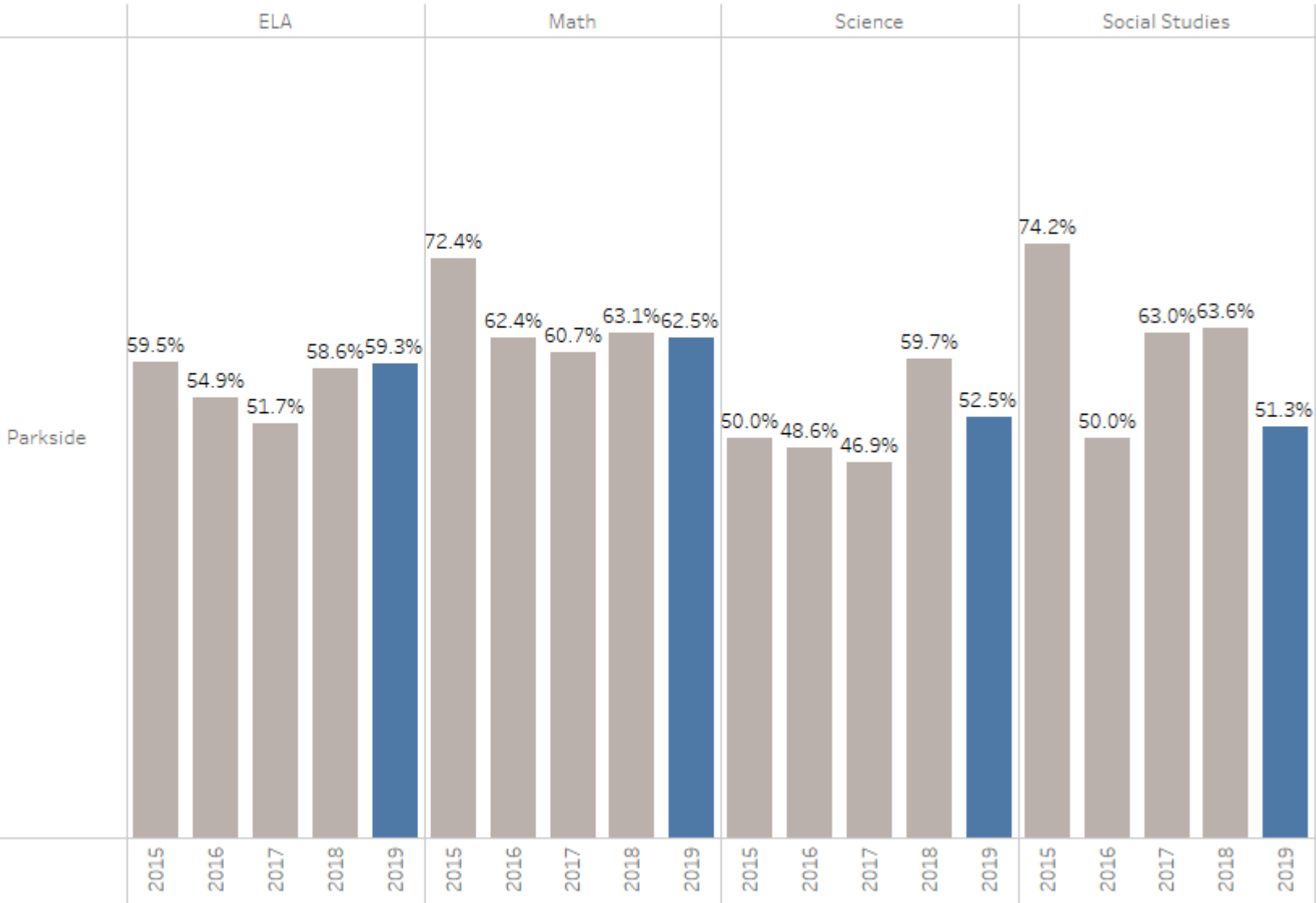
Ethnicity
All

Gifted Enrollment
All

ELL
All

SWD
All

Gender
All



Comparison Group
All

Year
2019

Subject
All

Grade
All

- Distinguished Learner
- Proficient Learner
- Developing Learner
- Beginning Learner



Milestone Grade and Subject Comparison for Parkside

Parkside	ELA	3	2019	All	47%	17%	23%	13%
		4	2019	All	36%	22%	23%	19%
		5	2019	All	39%	34%	15%	13%
	Math	3	2019	All	43%	32%	25%	
		4	2019	All	29%	31%	27%	13%
		5	2019	All	41%	36%	14%	9%
	Science	5	2019	All	48%	28%	15%	10%
	Social S..	5	2019	All	49%	34%	9%	9%

Comparison Group
All

Year
Multiple values

Subject
All

Grade
All

- Distinguished Learner
- Proficient Learner
- Developing Learner
- Beginning Learner

Milestone Grade and Subject Comparison for Parkside

Parkside	ELA	3	2018	All	45%	30%	15%	10%
			2019	All	47%	17%	23%	13%
		4	2018	All	46%	25%	16%	13%
			2019	All	36%	22%	23%	19%
		5	2018	All	32%	38%	27%	
			2019	All	39%	34%	15%	13%
	Math	3	2018	All	34%	31%	19%	15%
			2019	All	43%	32%	25%	
		4	2018	All	39%	33%	19%	9%
			2019	All	29%	31%	27%	13%
		5	2018	All	38%	32%	25%	5%
			2019	All	41%	36%	14%	9%
	Science	5	2018	All	40%	35%	16%	9%
			2019	All	48%	28%	15%	10%
	Social Studies	5	2018	All	36%	45%	12%	6%
			2019	All	49%	34%	9%	9%



Sort
Proficient and Above

Beginning Learner Developing Learner Proficient Learner Distinguished Learner



Cluster
Jackson

Milestone Comparison

School Type
All

Year
2019

Subject
All

Grade
Multiple values

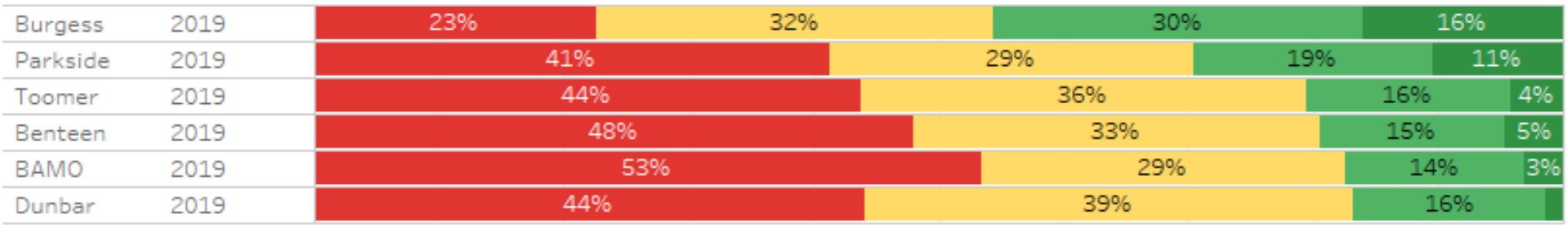
Ethnicity
All

Gifted Enrollment
All

ELL
All

SWD
All

Gender
All



Early Literacy School Comparison

End Year 2019

Window All

Assoc. Sup. All

Cluster All

School All

Grade All

SWD All

Gifted All

Ethnicity All

EL Status All

School	Window	Exams				
Smith	2018-19 Fall	322	17%	46%	21%	16%
	2018-19 Winter	313	4%	29%	29%	37%
	2018-19 Spring	246	5%	17%	30%	48%
Morningside	2018-19 Fall	355	8%	45%	21%	26%
	2018-19 Winter	248		27%	42%	29%
	2018-19 Spring	205	15%	42%	43%	
Burgess	2018-19 Fall	188	28%	46%	15%	11%
	2018-19 Winter	192	8%	34%	28%	30%
	2018-19 Spring	194		26%	24%	47%
Brandon	2018-19 Fall	164	16%	63%	18%	
	2018-19 Winter	161	4%	33%	38%	25%
	2018-19 Spring	164		12%	29%	56%
Garden Hills	2018-19 Fall	238	28%	39%	15%	18%
	2018-19 Winter	229	13%	35%	30%	22%
	2018-19 Spring	232		26%	31%	40%
Heritage	2018-19 Fall	193	31%	41%	15%	13%
	2018-19 Winter	197	17%	34%	23%	25%
	2018-19 Spring	207	5%	24%	31%	40%
Springdale	2018-19 Fall	178	13%	56%	20%	10%
	2018-19 Winter	162		34%	38%	26%
	2018-19 Spring	164		17%	36%	45%
Beecher	2018-19 Fall	129	31%	31%	20%	18%
	2018-19 Winter	95	17%	25%	32%	26%
	2018-19 Spring	97		19%	42%	36%
Bolton	2018-19 Fall	279	21%	43%	19%	17%
	2018-19 Winter	263	11%	38%	28%	22%
	2018-19 Spring	255	9%	30%	27%	33%
Parkside	2018-19 Fall	234	33%	47%	11%	9%
	2018-19 Winter	218	12%	38%	29%	22%
	2018-19 Spring	215	4%	32%	25%	40%
Continental	2018-19 Fall	169	47%	36%	15%	
	2018-19 Winter	177	16%	31%	30%	23%
	2018-19 Spring	189	4%	32%	28%	37%
Centennial	2018-19 Fall	236	20%	41%	22%	16%
	2018-19 Winter	189	5%	42%	31%	22%
	2018-19 Spring	164		32%	40%	26%

Achievement Level

- Probable Reader
- Transitional Reader
- Late Emergent Reader
- Early Emergent Reader



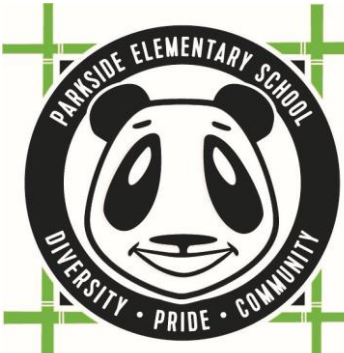
School STAR Comparison

click a school to see their usage & grade level performance if there are above 10 students per grade

- End Year2019
- WindowAll
- ExamAll
- Assoc. Sup.All
- ClusterJackson
- SchoolAll
- GradeAll
- SWDAll
- GiftedAll
- EthnicityAll
- EL StatusAll

School	Window	Exams				
Burgess	2018-19 Fall	539	16%	41%	32%	11%
	2018-19 Winter	549	17%	31%	37%	15%
	2018-19 Spring	273	19%	30%	33%	17%
Parkside	2018-19 Fall	783	29%	33%	28%	10%
	2018-19 Winter	777	26%	38%	24%	12%
	2018-19 Spring	815	38%	30%	19%	12%
Toomer	2018-19 Fall	555	29%	45%	22%	4%
	2018-19 Winter	569	28%	40%	25%	7%
	2018-19 Spring	580	37%	39%	18%	6%
Benteen	2018-19 Fall	323	40%	41%	17%	
	2018-19 Winter	317	44%	33%	19%	4%
	2018-19 Spring	291	49%	33%	14%	
Dunbar	2018-19 Fall	514	33%	47%	19%	
	2018-19 Winter	527	34%	45%	19%	
	2018-19 Spring	496	45%	40%	14%	
King	2018-19 Fall	1,447	39%	44%	16%	
	2018-19 Winter	1,334	43%	38%	16%	
	2018-19 Spring	1,353	42%	39%	16%	
BAMO	2018-19 Fall	288	35%	47%	16%	
	2018-19 Winter	303	38%	43%	18%	
	2018-19 Spring	318	47%	40%	11%	
Jackson High	2018-19 Fall	479	53%	42%	5%	
Crim	2018-19 Fall	76	63%	30%	7%	
	2018-19 Spring	42	67%	33%		

- Achievement Level
- Distinguished Learner
 - Proficient Learner
 - Developing Learner
 - Beginning Learner



Achievement Sort
Proficient & Above

End Year 2019
Window All
Exam Reading
Assoc. Sup. All
Cluster Jackson
School Parkside
Grade All
SWD All
Gifted All
Ethnicity All
EL Status All

School STAR Comparison

click a school to see their usage & grade level performance if there are above 10 students per grade

School	Window	Exams				
Parkside	2018-19 Fall	375				
	2018-19 Winter	385				
	2018-19 Spring	408				

Achievement Level
Distinguished Learner
Proficient Learner
Developing Learner
Beginning Learner



Achievement Sort
Proficient & Above

End Year 2019

Window All

Exam Math

Assoc. Sup. All

Cluster Jackson

School Parkside

Grade All

SWD All

Gifted All

Ethnicity All

EL Status All

School STAR Comparison

click a school to see their usage & grade level performance if there are above 10 students per grade

School	Window	Exams				
Parkside	2018-19 Fall	408	27%	40%	28%	6%
	2018-19 Winter	392	24%	43%	26%	7%
	2018-19 Spring	407	38%	36%	19%	7%

- Achievement Level
- Distinguished Learner
 - Proficient Learner
 - Developing Learner
 - Beginning Learner

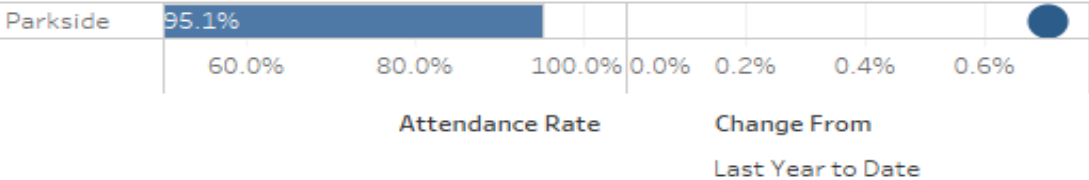




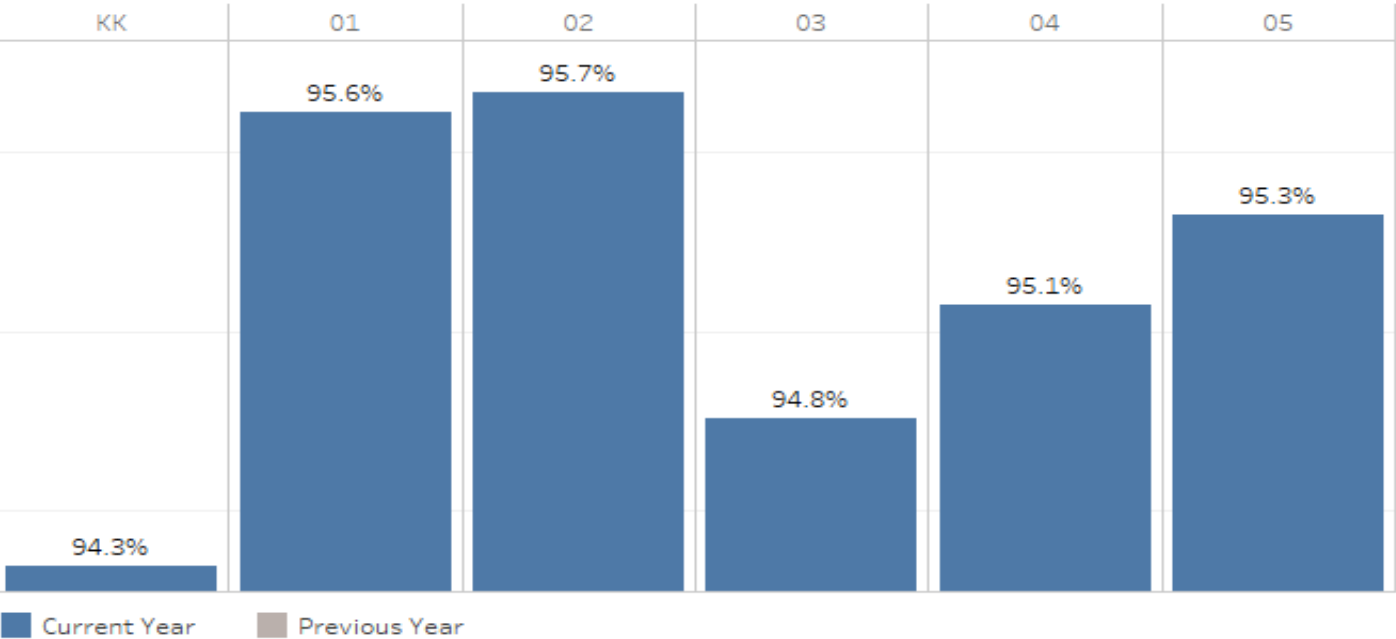
Overall (based on current filters)

SY2018-2019 ADA Attendance Rate: 95.1%

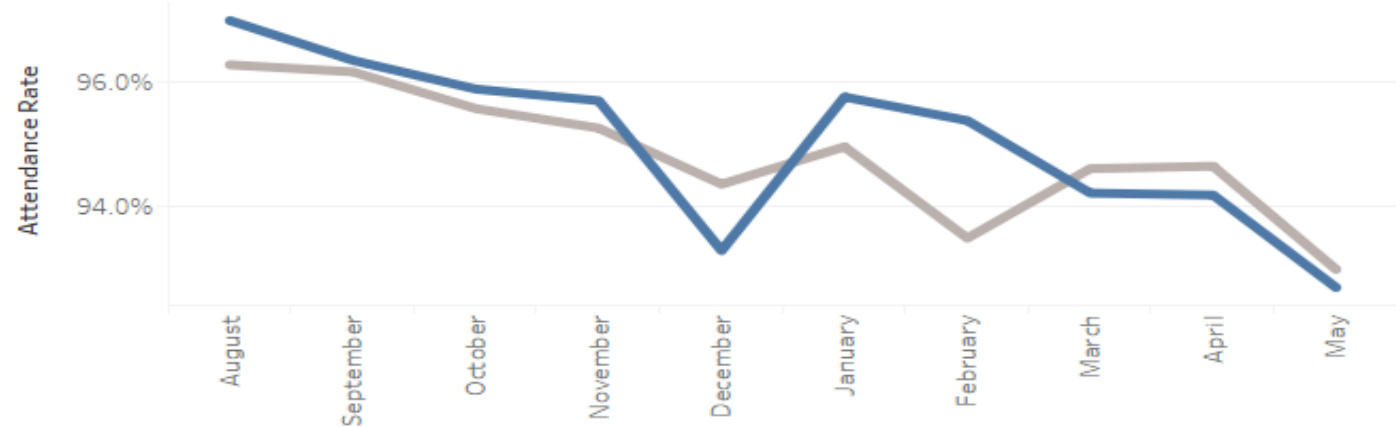
District ADA Attendance Comparison SY2018-2019



Comparison Across Grades



Comparison Across Years



Goals for 2019-2020

- ▶ To improve the number of students at levels 3 and above on the Georgia Milestones EOG in Reading/ELA, Math, Science and Social Studies.
- ▶ To improve the number of students at level 3 and above on the STAR assessment in Reading & Math for students in grades 1-2.
- ▶ To reduce the number of students missing more than 10% of days enrolled in school.
- ▶ To continue the implementation of the SEL program.
- ▶ To continue the process of becoming IB authorized



How do we get it DONE?

Top Priorities for FY20

- ▶ Guided Reading will be conducted daily in all homeroom classes K-5
- ▶ Use of Reading and Writing Workshop model for instruction
- ▶ Eureka math resources and materials will be used to teach math K-5
- ▶ Monitoring, assessing, and planning for mastery using student data
- ▶ Self-contained classes K-3 - Paired Teaching 4-5
- ▶ Inquiry/Project Base Instruction in Science and Social Studies
- ▶ Blended Gifted Delivery Model (Cluster 1-3) & (Resource 4-5)
- ▶ Schoolwide Behavior Management System



Improving Instruction to Improve Student Outcomes

- ▶ Learning Targets - “I Can” statements
- ▶ Gradual Release Instructional Model
- ▶ Hourly paras for 1st & 2nd grade classes
- ▶ Balance of informational & literary Text (ELA)
- ▶ Balance Literacy approach
- ▶ Use of manipulatives (math)
- ▶ Small groups to differentiate and meet the need of your high and low performing students
- ▶ Ensuring that the rigor of instruction matches the rigor of the standards



Changes...

- ▶ New dismissal procedures - all students will badges
- ▶ Guided Reading implemented by all homeroom teachers
- ▶ 90 planning period once a week
- ▶ Students will be dismissed for the breakfast and the gym at 7:35
- ▶ All teachers must be in their classes and ready to received students at 7:35
- ▶ Tuesdays and Wednesdays - Professional Development & PLC Days
- ▶ The GroupMe app will take the place of Remind101 for teachers and staff
- ▶ All teachers will be required to join MemberHub (Communication tool for parents)

