

Sarah Smith Elementary

4.17.2025

# GO Team Meeting



# Agenda

- I. **Call to Order**
- II. **Roll Call; Establish Quorum**
- III. **Action Items**
  - a. Approval of Agenda
  - b. Approval of Previous Minutes:
  - c. Additional Action Item *(if needed)*
- IV. **Discussion Items** *(add items as needed)*
  - a. 2025 Spring MAPS results
  - b. Needs Assessment
- V. **Information Items**
  - a. Principal's Report
    - a. 2024-2025 Family Engagement and/or Partnership Highlights
  - b. Cluster Advisory Team Report – 3/24/2025
  - c. GO Team Elections
- VI. **Announcements** *(add items as needed)*
- VII. **Public Comment** *(if applicable)*
- VIII. **Adjournment**

# 2025 Spring MAPS Results

## Data Points to Consider

- Spring Results
- Fall to Spring Comparison
  - Literacy
  - Numeracy



# Math 2024-2025

## Spring 2024

03	Spring 2023-2024	136	25%	33%	29%	13%
04	Spring 2023-2024	136	23%	35%	33%	9%
05	Spring 2023-2024	108	20%	48%	21%	10%

## Fall 2024

03	Fall 2024-2025	152	18%	35%	34%	13%
04	Fall 2024-2025	129	22%	34%	33%	11%
05	Fall 2024-2025	126	22%	37%	33%	9%

## Spring 2025

03	Spring 2024-2025	155	21%	31%	32%	16%
04	Spring 2024-2025	127	17%	43%	30%	10%
05	Spring 2024-2025	129	26%	36%	37%	

+6

-2

+8



# Math Median Achievement Score



# Reading 2024-2025

## Spring 2024

03	Spring 2023-2024	141	33%	20%	31%	16%
04	Spring 2023-2024	140	24%	28%	29%	20%
05	Spring 2023-2024	106	18%	26%	43%	12%

## Fall 2024

03	Fall 2024-2025	153	22%	24%	35%	19%
04	Fall 2024-2025	124	25%	30%	25%	20%
05	Fall 2024-2025	129	17%	25%	39%	19%

## Spring 2025

03	Spring 2024-2025	161	24%	22%	31%	22%
04	Spring 2024-2025	134	28%	24%	28%	21%
05	Spring 2024-2025	130	18%	25%	42%	14%

+6

+0

+1





# Reading Median Achievement Score

School Profile		
Growth and Achievement by Grade		
Sarah Rawson Smith Elementary School   Reading		
Grade ↑		Sort by <div>-- select an option --</div> Number of Students ⓘ
Grade KK	<div><div>Growth Median and Distribution</div><div><div>66th</div><div><div>15%</div><div>11%</div><div>21%</div><div>14%</div><div>39%</div></div></div></div> <div><div>Achievement Fall 2024-2025 Median and Distribution</div><div><div>60th</div><div><div>7%</div><div>20%</div><div>27%</div><div>22%</div><div>24%</div></div></div></div> <div><div>Achievement Spring 2024-2025 Median and Distribution</div><div><div>72nd</div><div><div>7%</div><div>11%</div><div>20%</div><div>24%</div><div>38%</div></div></div></div>	112
Grade 1	<div><div>Growth Median and Distribution</div><div><div>54th</div><div><div>21%</div><div>17%</div><div>17%</div><div>18%</div><div>27%</div></div></div></div> <div><div>Achievement Fall 2024-2025 Median and Distribution</div><div><div>62nd</div><div><div>18%</div><div>15%</div><div>15%</div><div>15%</div><div>37%</div></div></div></div> <div><div>Achievement Spring 2024-2025 Median and Distribution</div><div><div>67th</div><div><div>18%</div><div>12%</div><div>15%</div><div>14%</div><div>41%</div></div></div></div>	127
Grade 2	<div><div>Growth Median and Distribution</div><div><div>47th</div><div><div>26%</div><div>16%</div><div>19%</div><div>11%</div><div>28%</div></div></div></div> <div><div>Achievement Fall 2024-2025 Median and Distribution</div><div><div>56th</div><div><div>17%</div><div>18%</div><div>14%</div><div>33%</div></div></div></div> <div><div>Achievement Spring 2024-2025 Median and Distribution</div><div><div>64th</div><div><div>16%</div><div>12%</div><div>16%</div><div>25%</div><div>31%</div></div></div></div>	113
Grade 3	<div><div>Growth Median and Distribution</div><div><div>47th</div><div><div>23%</div><div>20%</div><div>19%</div><div>17%</div><div>21%</div></div></div></div> <div><div>Achievement Fall 2024-2025 Median and Distribution</div><div><div>68th</div><div><div>14%</div><div>16%</div><div>12%</div><div>24%</div><div>34%</div></div></div></div> <div><div>Achievement Spring 2024-2025 Median and Distribution</div><div><div>67th</div><div><div>14%</div><div>13%</div><div>17%</div><div>22%</div><div>34%</div></div></div></div>	147
Grade 4	<div><div>Growth Median and Distribution</div><div><div>46th</div><div><div>25%</div><div>18%</div><div>18%</div><div>19%</div><div>29%</div></div></div></div> <div><div>Achievement Fall 2024-2025 Median and Distribution</div><div><div>57th</div><div><div>23%</div><div>15%</div><div>15%</div><div>19%</div><div>28%</div></div></div></div> <div><div>Achievement Spring 2024-2025 Median and Distribution</div><div><div>60th</div><div><div>19%</div><div>18%</div><div>14%</div><div>26%</div><div>23%</div></div></div></div>	118
Grade 5	<div><div>Growth Median and Distribution</div><div><div>51st</div><div><div>20%</div><div>21%</div><div>19%</div><div>23%</div><div>17%</div></div></div></div> <div><div>Achievement Fall 2024-2025 Median and Distribution</div><div><div>68th</div><div><div>14%</div><div>14%</div><div>13%</div><div>30%</div><div>29%</div></div></div></div> <div><div>Achievement Spring 2024-2025 Median and Distribution</div><div><div>67th</div><div><div>13%</div><div>12%</div><div>18%</div><div>29%</div><div>28%</div></div></div></div>	120
Percentiles Key <div><div></div> 1st - 20<sup>th</sup> <div></div> 21st - 40<sup>th</sup> <div></div> 41st - 60<sup>th</sup> <div></div> 61st - 80<sup>th</sup> <div></div> &gt;80<sup>th</sup></div>		
<div>More information about this chart.</div>		
Revised Spring 2024-2025 Tested Fall 2024-2025 - Spring 2024-2025		

# Needs Assessment

## ACTIVITY

### Needs Assessment

During this Needs Assessment, we will look at data from the Spring MAPS administration and identify 2-3 potential needs for the 2025-2026 school year.

This discussion will help school leadership as they prepare for the 2025-2026 school year.





# Needs Assessment: Guiding Questions

- What does this data tell us?
- What good news is there to celebrate?
- Where are growth opportunities?
- What trends do we see in the data?

ACTIVITY: Strengths & Opportunities

Based on your discussion about the school data, determine point of strength and opportunities for improvement and summarize them below.

Strengths	Opportunities

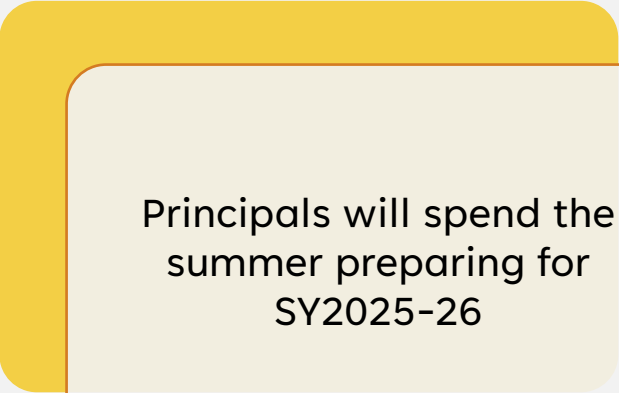
# Needs Assessment:

Based on your responses for strengths and opportunities, what must be true for Sarah Smith to Achieve Excellence:

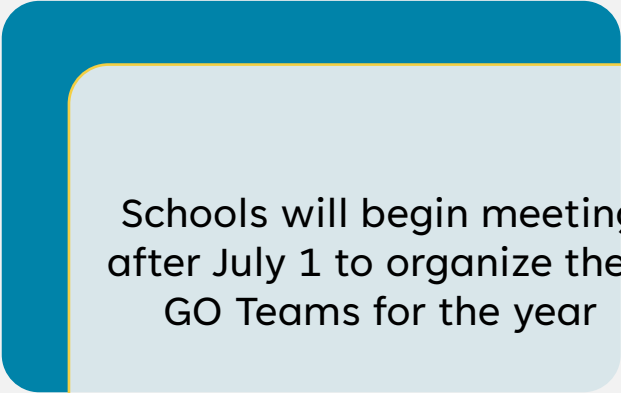


	Need
1	
2	
3	

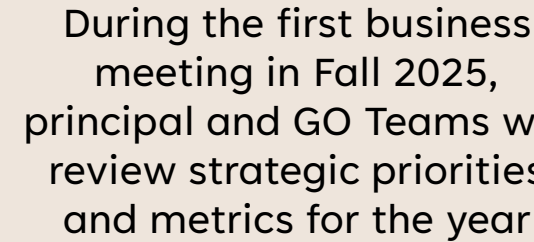
# Next Steps



Principals will spend the summer preparing for SY2025-26



Schools will begin meeting after July 1 to organize their GO Teams for the year



During the first business meeting in Fall 2025, principal and GO Teams will review strategic priorities and metrics for the year

# Information Items



# Principal's Report





- Gifted
- 2025-26 Schedule and Hiring Update
- Departmentalization
- Results of the 2024-25 IB Evaluation and Key Indicators to improve
- 2024-25 Budget check-in: How did we use funds from the teacher departure in fall 2024?





## Enhance Differentiated Instruction:

Provide gifted learners with rigorous, engaging, and developmentally appropriate instruction that extends beyond the general education curriculum while aligning with state standards.

## Strengthen Curriculum Alignment:

Ensure gifted instruction seamlessly integrates with grade-level content by having gifted teachers participate in PLCs and collaborate with general education teachers.

# Gifted Plan Goals

## Maximize Instructional Effectiveness:

Utilize dedicated planning time to develop high-quality lessons, analyze student data, and refine instructional strategies that meet the unique needs of gifted learners.

## Support a Balanced Learning Environment:

Maintain continuity in general education classrooms by structuring pull-out days for WIN (What I Need) time, ensuring that all students receive targeted support without missing new instruction.

# Objectives

- **Dual Grade-Level Responsibility:** Each gifted teacher will be responsible for teaching two grade levels.
- **Dedicated Planning Time:** One day per week will be reserved for instructional planning.
- **Instructional Delivery:** Gifted instruction will take place over the remaining four days across both campuses.

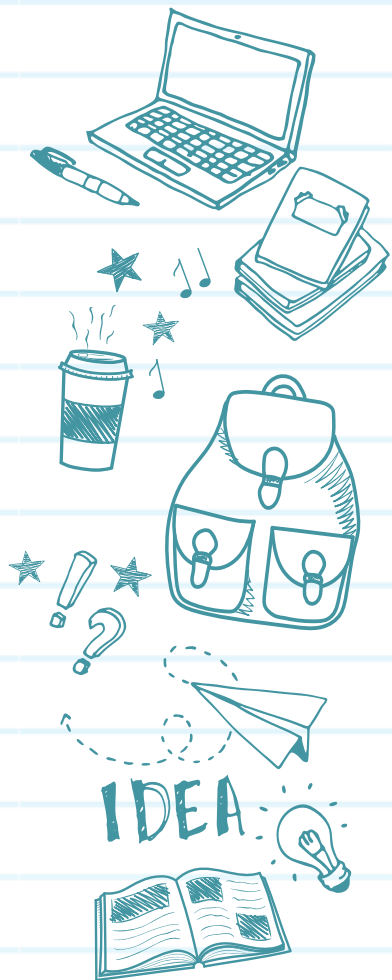


# Objectives

- **Collaboration & Alignment:** Gifted teachers will plan with their grade levels and attend PLCs to ensure instruction aligns with state standards and general education curriculum.
- **Dual Language Immersion Support:** DLI students will return to their Math and Science classes for instruction in Spanish.
- **General Education Planning:** Homeroom teachers will not introduce new content on pull-out days. Instead, these days will be designated for WIN (What I Need) instruction, small groups, and data-driven center activities.



# The Plan



Monday

Instructional  
support  
  
Planning  
  
Test Prep

Tuesday

ALL DAY

Gifted  
Instruction  
at the IC  
Campus

PLC'S

Wednesday

ALL DAY

Gifted  
instruction  
at the PC  
Campus

PLC'S

Thursday

ALL DAY

*DLI*  
Gifted  
Instruction  
at the IC  
Reading  
Side Only

Split into 2  
classes

Friday

ALL DAY

*DLI*  
Gifted  
Instruction  
at the PC  
Reading  
Side Only

Split into  
2 classes

# Gifted Updates

- **3 Teachers Next Year**
- **1 Day Pull Out**
- **DLI Pulled out from the English side**
- **Each team 3-5 will have at least one Gifted Certified Teacher**





# Schedule

## 45 min Specials with One Double Special Day

Kindergarten				1st Grade				2nd Grade				Pre-K	
Kindergarten	K Regular	Time	K Double Specials	First Grade	1st Regular	Time	Double Specials	2nd Grade	2nd Regular	Time	Double Specials	Pre-K Regular	Time
8:00-9:45	Math	8:00-9:45	Math	8:00-9:45	Math	8:00-9:45	Math	8:00-8:35	Reading/ELA	8:00-9:30	Double Specials		
9:45-10:10	Reading/ELA	9:45-10:10	Reading/ELA	9:45-10:40	Reading/ELA	9:45-10:00	Reading/ELA	8:35-9:20	Specials	9:35-10:45	Reading/ELA		
10:15-11:15	Lunch and Recess	10:15-11:15	Lunch and Recess	10:45-11:30	Specials	10:00-11:30	Specials	9:25-10:45	Reading/ELA	10:45-12:30	Math	10:15-11:15	Lunch and Recess
11:20-12:50	Reading/ELA	11:20-12:25	Reading/ELA	11:35-12:35	Lunch and Recess	11:35-12:35	Lunch and Recess	10:45-12:30	Math	12:35-1:35	Lunch and Recess		
12:50-1:10	Content Block	12:30-2:00	Double Specials	12:40-1:40	Reading/ELA	12:40-2:05	Reading/ELA	12:35-1:35	Lunch and Recess	1:40-2:05	Content Block	12:00-12:30	Specials
1:15-2:00	Specials	2:00-2:05	Pack Up	1:40-2:05	Content Block	2:05	Dismissal	1:40-2:05	Content Block	2:05	Dismissal	2:00-2:15	Pack Up
2:00-2:05	Pack Up	2:05	Dismissal	2:05	Dismissal			2:05	Dismissal			2:15	Dismissal
2:05	Dismissal												

3rd Grade				4th Grade				5th Grade			
Third	3rd Regular	Time	3rd Double Specials	Fourth Grade	4th Regular	Time	4th Double Specials	Fifth Grade	5th Regular	Time	5th Double Specials
8:00-9:40	Class 1 (1h 40m)	8:00-8:55	Class 1 (55 minutes)	8:00-10:00	Class 1 (2h 5m)	8:00-9:45	Class 1 (1h 45m)	8:00-10:00	Class 1 (2h)	8:00-9:40	Class 1 (1h 40m)
9:45-10:30	Specials	9:00-10:30	Specials	10:05-11:25	Class 2 (80 minutes)	9:45-11:25	Class 2 (1h 40m)	10:05-11:40	Class 2 (1h 35m)	9:45-10:55	Class 2 (70m)
10:35-11:35	Lunch and Recess	10:35-11:35	Lunch and Recess	11:30-12:30	Lunch and Recess	11:30-12:30	Lunch and Recess	11:45-12:30	Specials	11:00-12:30	Specials
11:40-12:05	Class 1 (25m)	11:40-12:25	Class 1 (35 minutes)	12:35-1:20	Specials	12:35-2:05	Specials	12:35-1:35	Lunch and Recess	12:35-1:35	Lunch and Recess
12:10-2:10	Class 2 (2h)	12:30-2:10	Class 2 (95 minutes)	1:25-2:10	Class 2 (45 minutes)	2:15	Dismissal	1:40-2:10	Class 2 (30m)	1:40-2:10	Class 2 (30m)
2:15	Dismissal	2:15	Dismissal	2:15	Dismissal			2:15	Dismissal	2:15	Dismissal

	Specials R	Specials D	Lunch and Recess
PK	12:00-12:30	*Playroom or extra recess	10:15-11:15
K	1:15-2:00	12:30-2:00	10:15-11:15
1st	10:45-11:30	10:00-11:30	11:35-12:35
2nd	8:35-9:20	8:00-9:30	12:35-1:35
3rd	9:45-10:30	9:00-10:30	10:35-11:35
4th	12:35-1:20	12:35-2:05	11:30-12:30



# Schedule Highlights

- 45 minute specials (90 minutes double specials day)
- Departmentalized (3-5)
- Two teachers (Math and Science/ ELA and Social Studies)
- Rotate each quarter







# IB Evaluation Report 2024

Key Findings and Action Steps for Sarah Rawson Smith Elementary

# Strengths Identified

- Alignment with IB philosophy and mission.
- Strong student and teacher support systems.
- Effective collaboration and cultural celebrations.



# Opportunities for Growth

- Ensure coherent unit planners are aligned with IB standards.
- Strengthen teacher training on inquiry-based strategies.
- Expand assessment methods to foster reflection.  
Integrate Learner Profile attributes into daily culture.



# Next Steps

- Submit completed unit planners by May 2025.
- Plan targeted professional development sessions.
- Enhance the visibility of the Learner Profile in school practices.
- Refine policies for clarity and alignment with IB goals.



# Key Dates and Deadlines

- Evidence submission deadline: May 1, 2025
- Ongoing monitoring and implementation through 2025.



# Additional Information Items

- **Cluster Advisory Team Report**
- **GO Team Elections**
  - Find candidates at [apsstrongschools.com](https://apsstrongschools.com)
  - Vote **APRIL 16-25**
  - Households are sent a unique link based upon information in Infinite Campus
  - School Staff will be sent a link to their APS email address

# Announcements

- **GO Team Members**
  - **Complete your end of year surveys (AVAILABLE NOW!** Check your email for the link)
    - Principal Feedback Survey
    - GO Team Satisfaction Survey
  - **Complete your required trainings ASAP**
    - Contact the GO Team Office with any questions







Thank  
You

for yet another  
great year!

