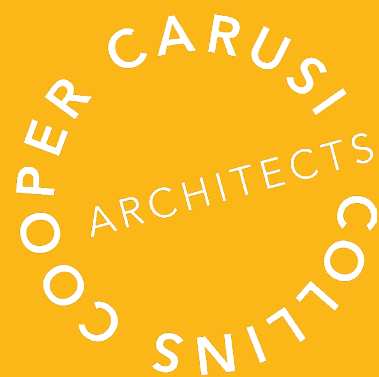


ATLANTA PUBLIC SCHOOLS

WEST MANOR ELEMENTARY

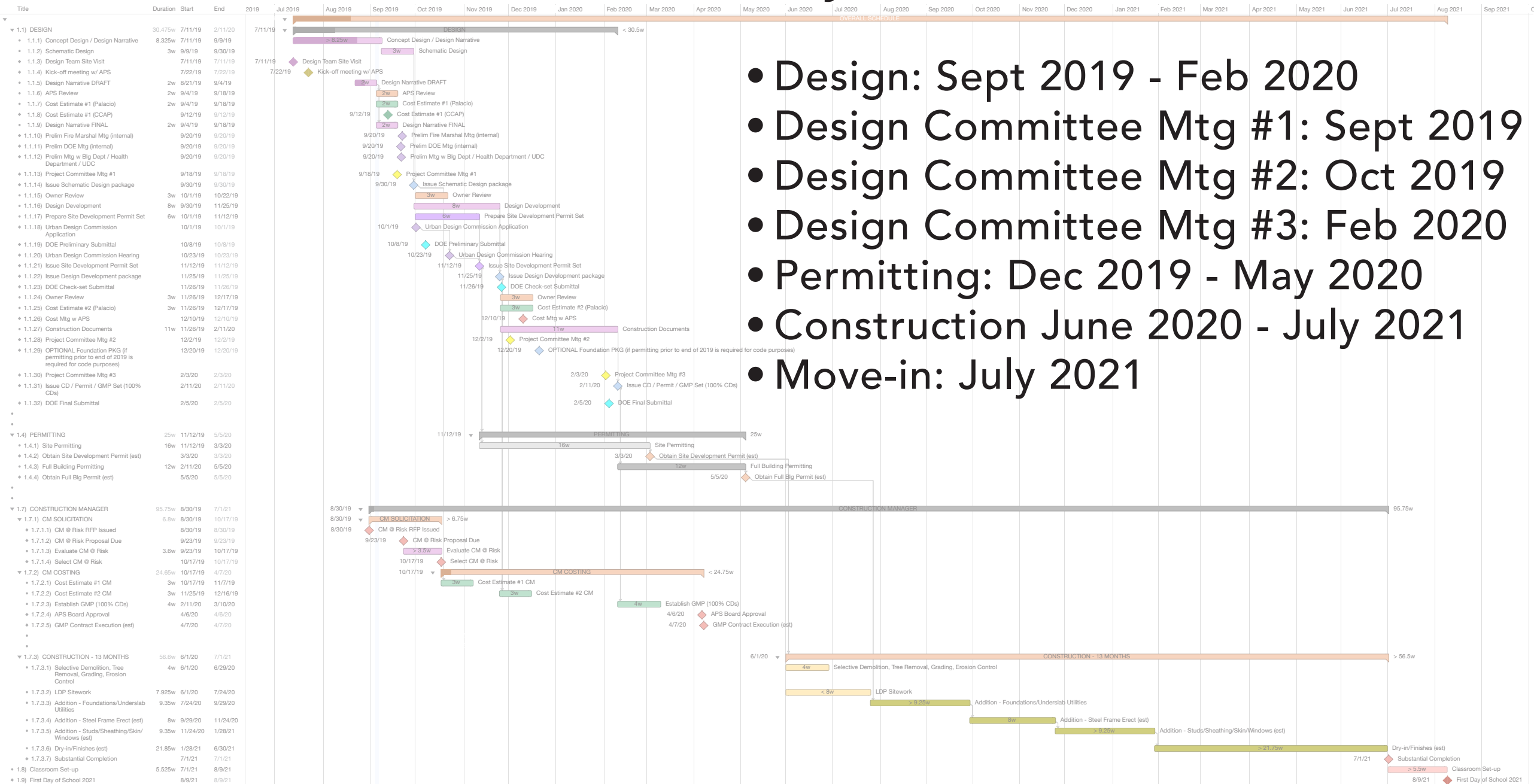
DESIGN COMMITTEE MEETING #2

16 OCTOBER 2019

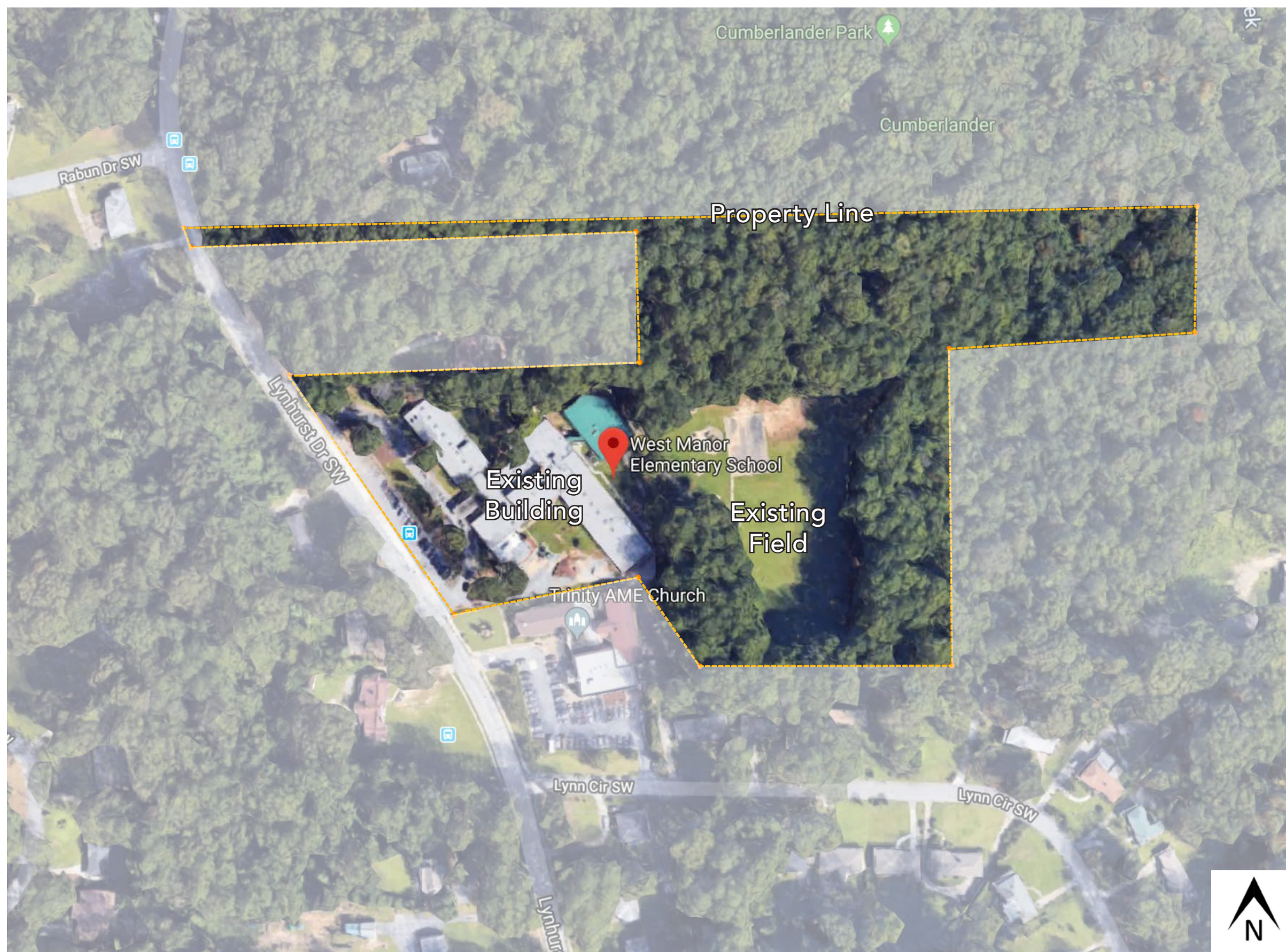


Project Schedule Milestones:

- Design: Sept 2019 - Feb 2020
- Design Committee Mtg #1: Sept 2019
- Design Committee Mtg #2: Oct 2019
- Design Committee Mtg #3: Feb 2020
- Permitting: Dec 2019 - May 2020
- Construction June 2020 - July 2021
- Move-in: July 2021



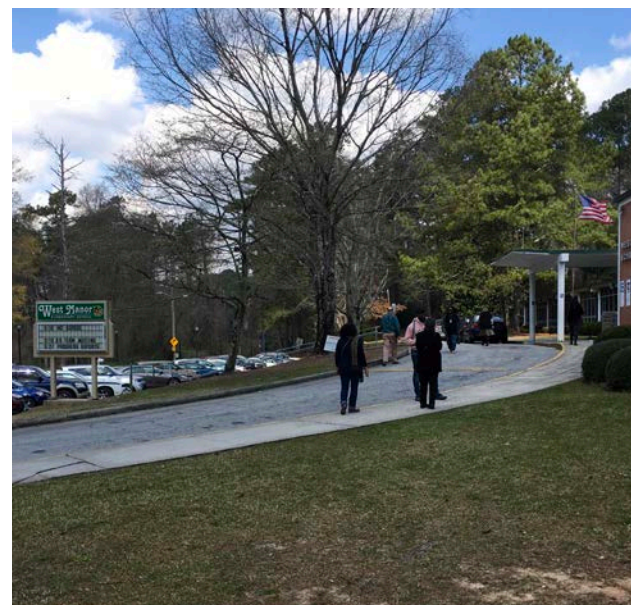
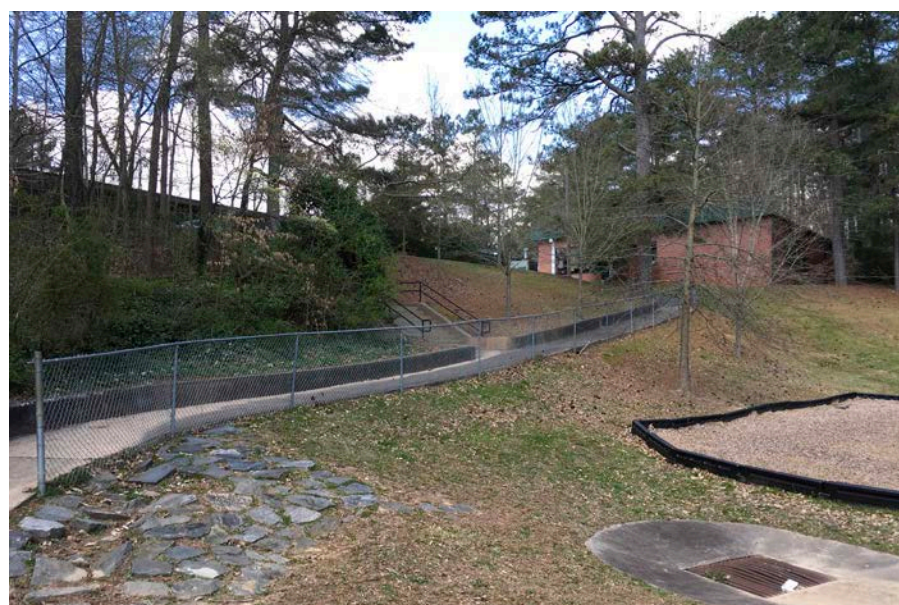
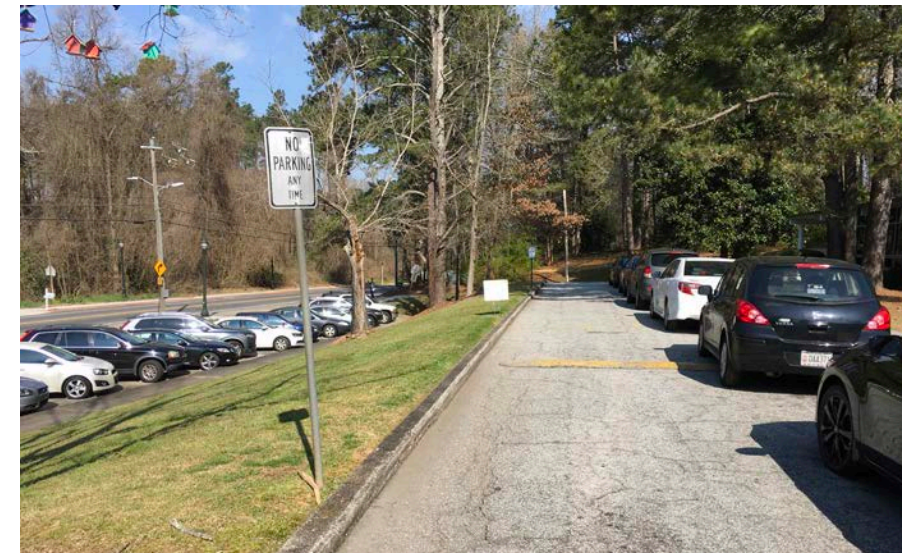
Project Schedule



Project Context

Project Goals: Site

- Additional Parking
- Improve Bus & Car Drop-Off Circulation
- Improve Service Vehicle Circulation
- Improve Site Drainage
- Improve Field Access
- Provide Outdoor Learning Opportunities



Existing Site Conditions

Project Goals: Building

- New Secure Vestibule/ Lobby
- Increase Administrative Space for Teachers & Staff
- New Gymnasium & Performance Platform
- Provide Accessible Path to Lower Playfield
- Dedicated Art, Music, and Spanish Classrooms
- Increase Conference/Meeting Spaces
- Increase Teacher Support & Break-out Spaces
- Increase Storage
- Update Finishes, Lighting, and Graphics
- Update HVAC and Electrical Systems
- Maintain Architectural Character of WME

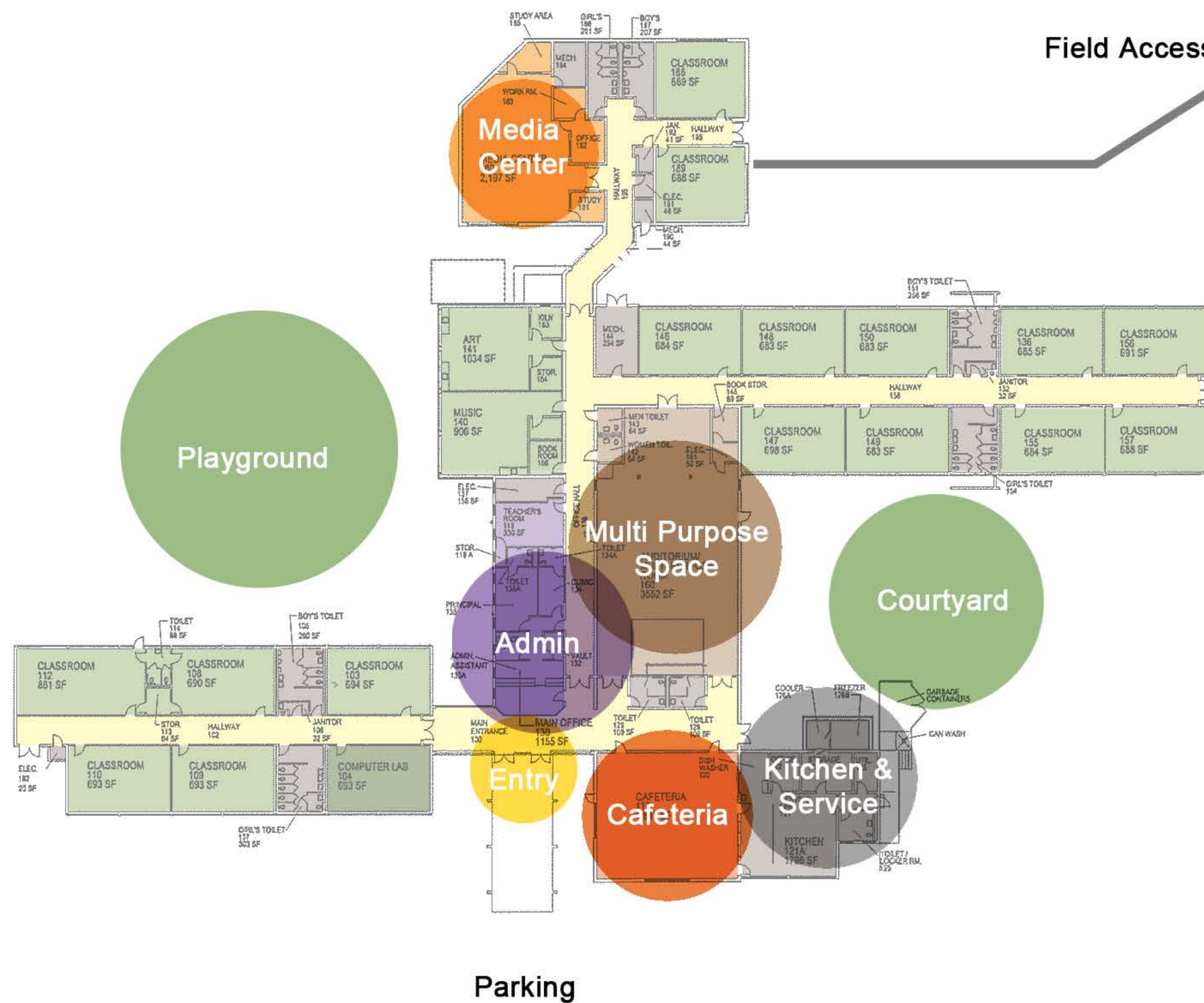


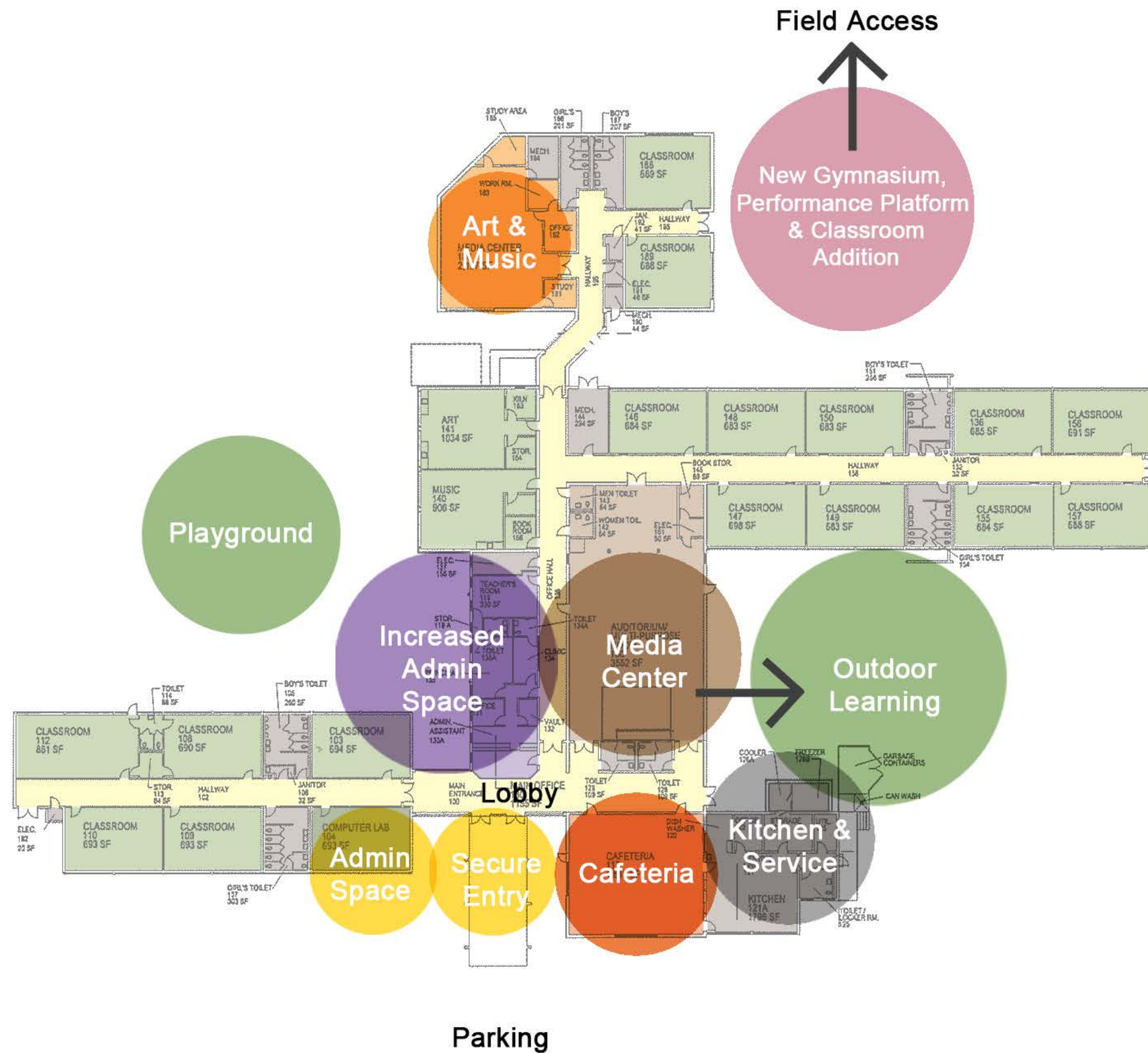
Existing School Conditions



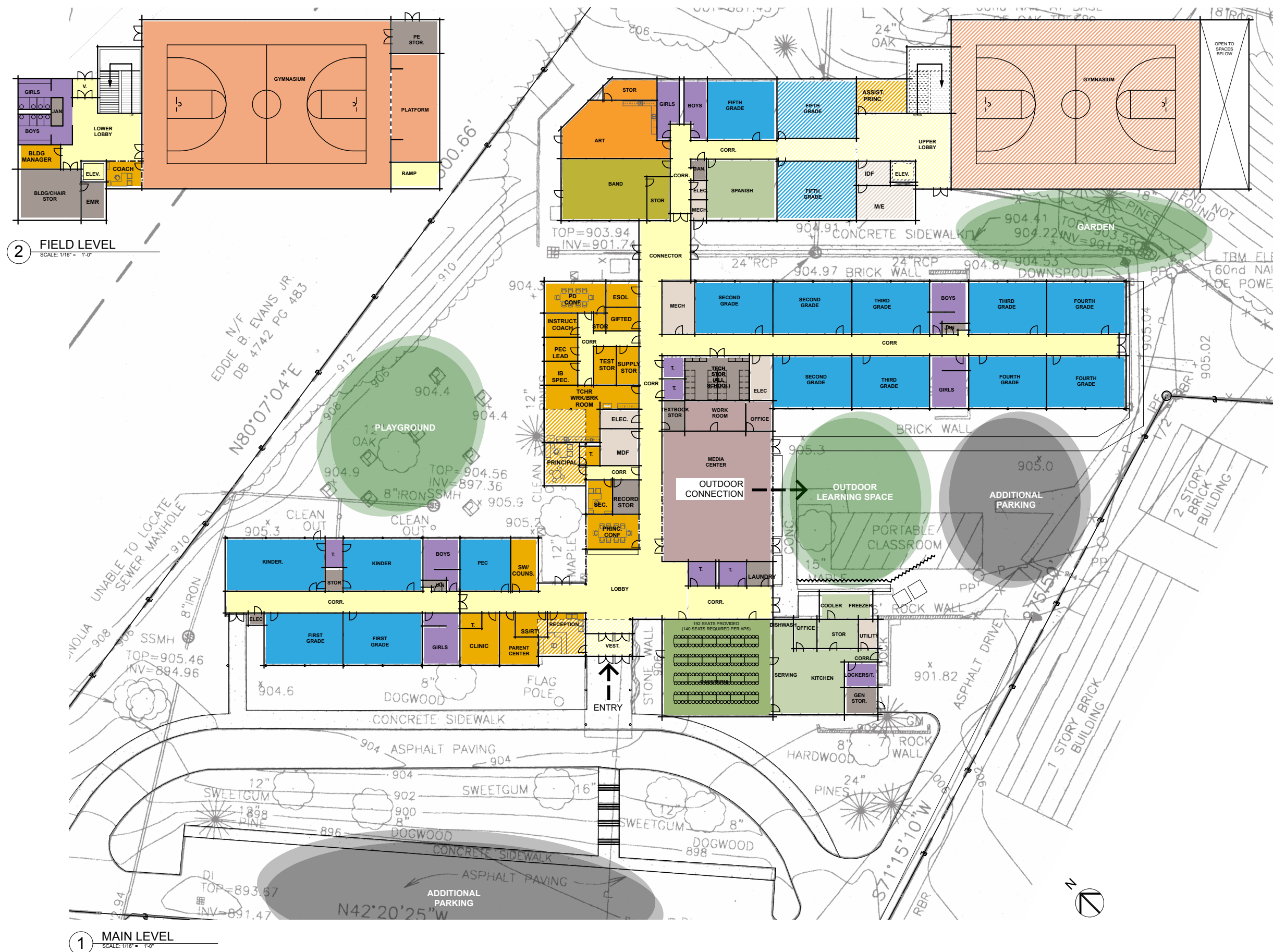
Existing Floor Plan

Existing Floor Plan

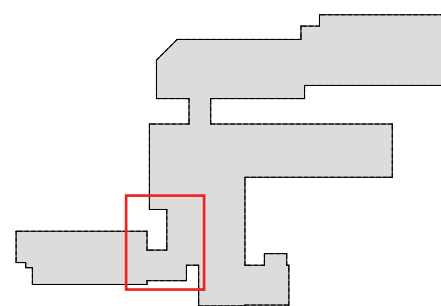




Design Diagram



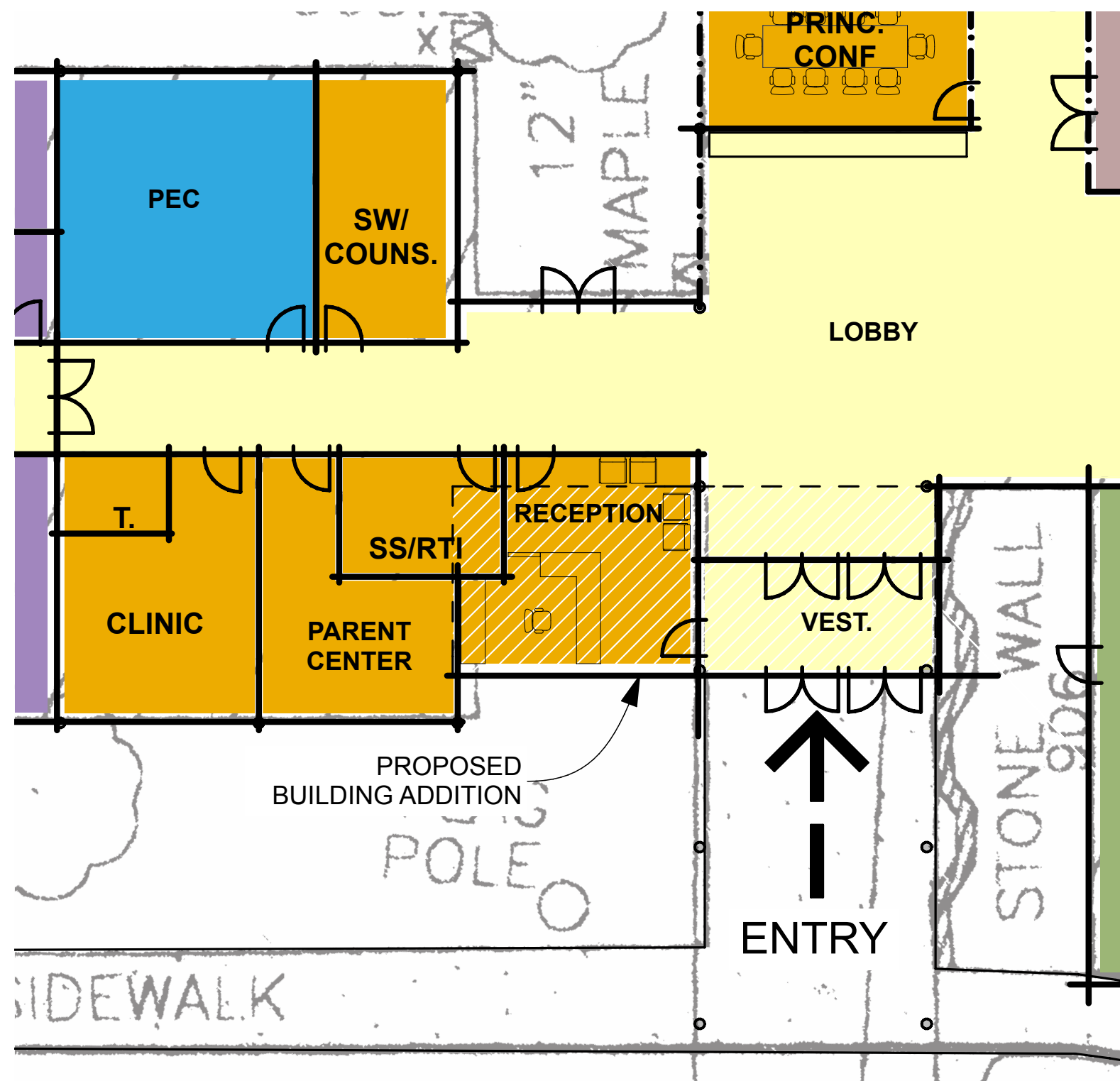
Plan Diagram



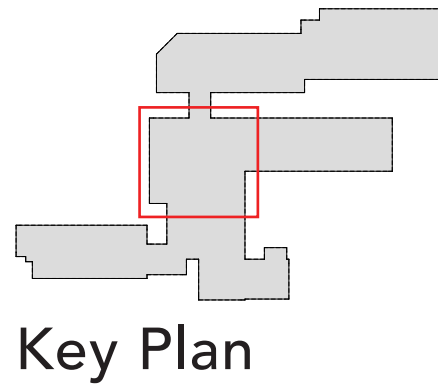
Key Plan

Design Features:

- New secure vestibule
- New Admin space centered around parent-school interaction
- New PEC classroom space
- Enlarged entry lobby with daylight
- New display area in Entry lobby

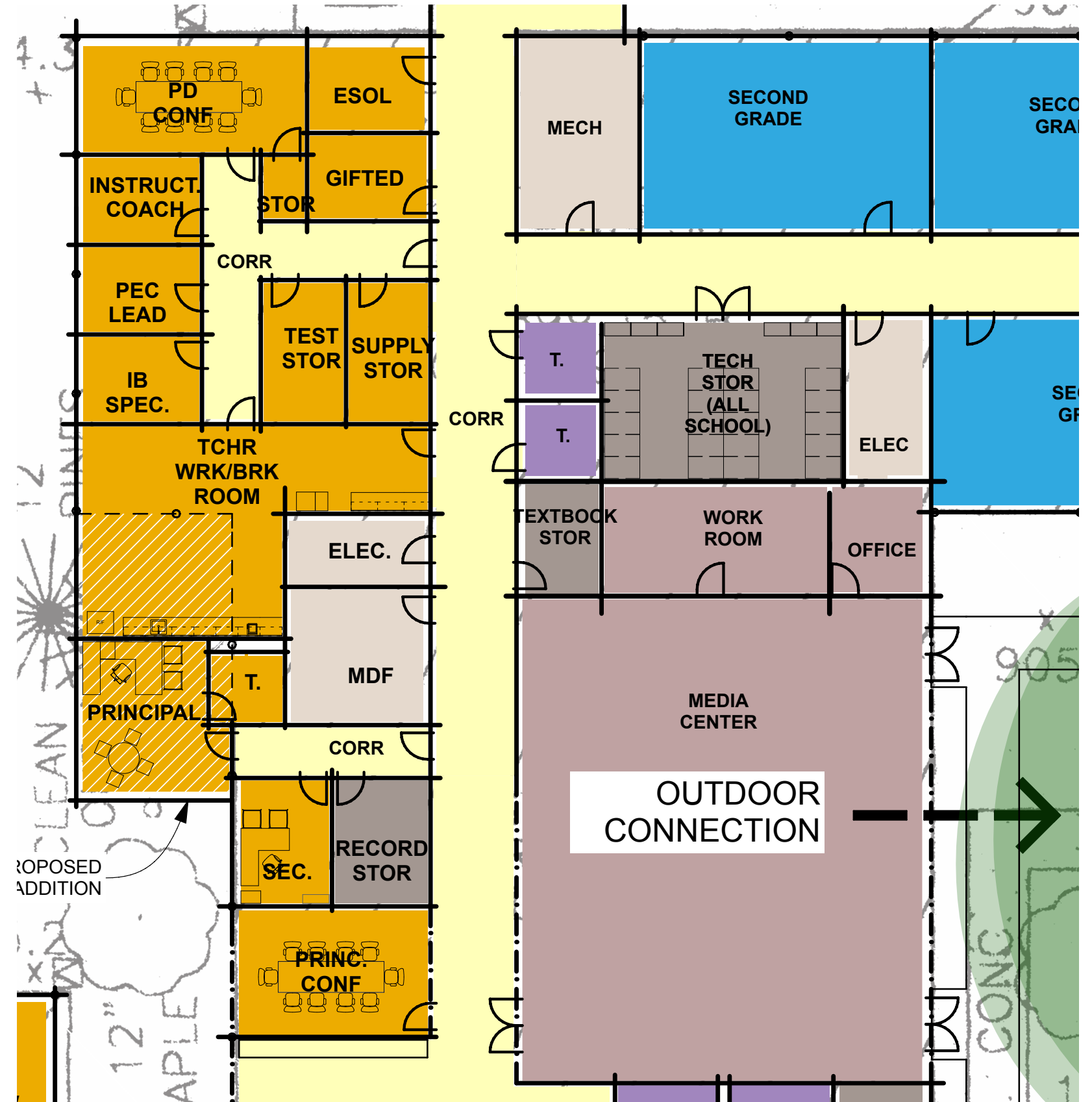


Plan Diagram: Entry & Parent "One Stop Shop"

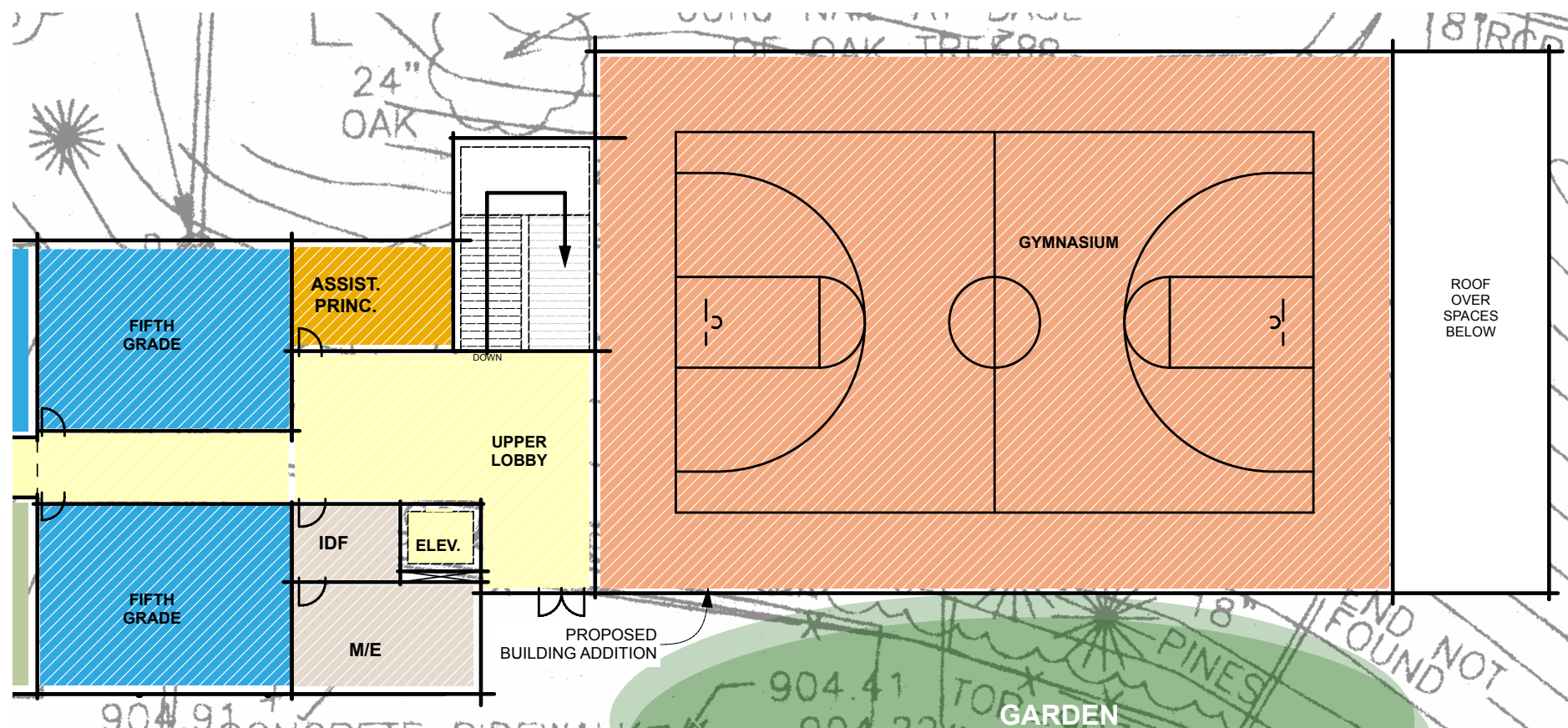
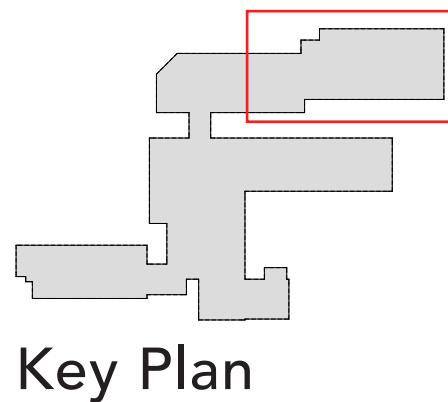


Design Features:

- New & enlarged Admin spaces
- New meeting spaces
- New Storage (including Technology storage)
- Centrally relocated and enlarged Media Center with courtyard views and access

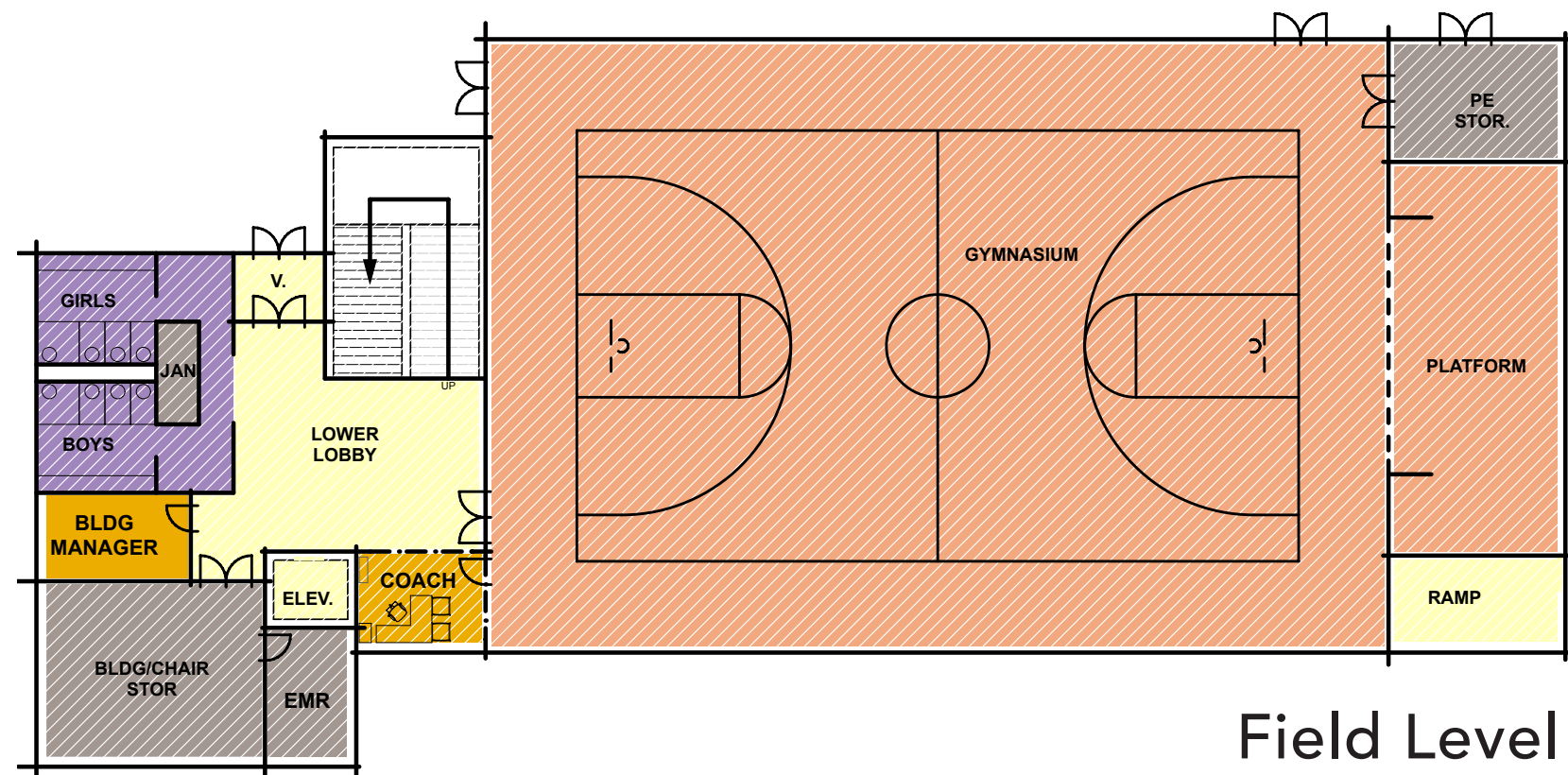


Plan Diagram: Admin & Media Center



Design Features:

- Field access thru building
- New Gymnasium
- New performance platform
- Views out to field
- Remote Admin presence
- New classrooms
- Additional Storage



Plan Diagram: Gymnasium, Platform & Associated Spaces