

Community Engagement

Midtown Cluster

Do you live in the neighborhoods of the Midtown Cluster? APS is exploring options that may impact your school.

During the Facilities Master Planning (FMP) process, APS developed scenarios that would rezone Morningside, Springdale Park, and Mary Lin neighborhoods.

Join us to engage on these topics throughout March and April.

March 10th

6pm-7:30pm

Virtual

<http://tinyAPS.com/?FMPMarch>



Hear about the scenarios proposed across the district, including Midtown

March 22nd

6:00pm – 7:30pm

Inman Facility

774 Virginia Ave NE

Atlanta, GA 30306



Engage on the scenarios specifically impacting the future use of the Inman Facility

April

School GO Team Meetings

Virtual



Engage in school-specific conversations on the scenarios

Learn more about FMP here:

www.atlantapublicschools.us/FMP

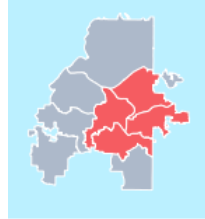


Share feedback here:

<http://tinyAPS.com/?MidtownFacilities>



MIDTOWN CLUSTER



AN OVERVIEW OF SCENARIOS PRESENTED BY THE FACILITIES MASTER PLANNING PROCESS

WHY ARE CHANGES NEEDED?

Current and projected enrollment show the following:

- Midtown High School, Morningside ES, and Springdale Park are over capacity

WHAT IS THE IMPACT TO FAMILIES LIVING IN THE MIDTOWN CLUSTER?

Both scenarios would require changing attendance zones throughout the cluster. Neither scenario impacts the current Hope-Hill attendance zone, and only Scenario 1 impacts the Mary Lin attendance zone. Separate scenarios address capacity at Midtown HS by redistricting the Centennial Academy zone to the Washington Cluster.

SCENARIO 1 (Elementary Schools)

Create a new K-5 Elementary School at Inman (2023-2024)

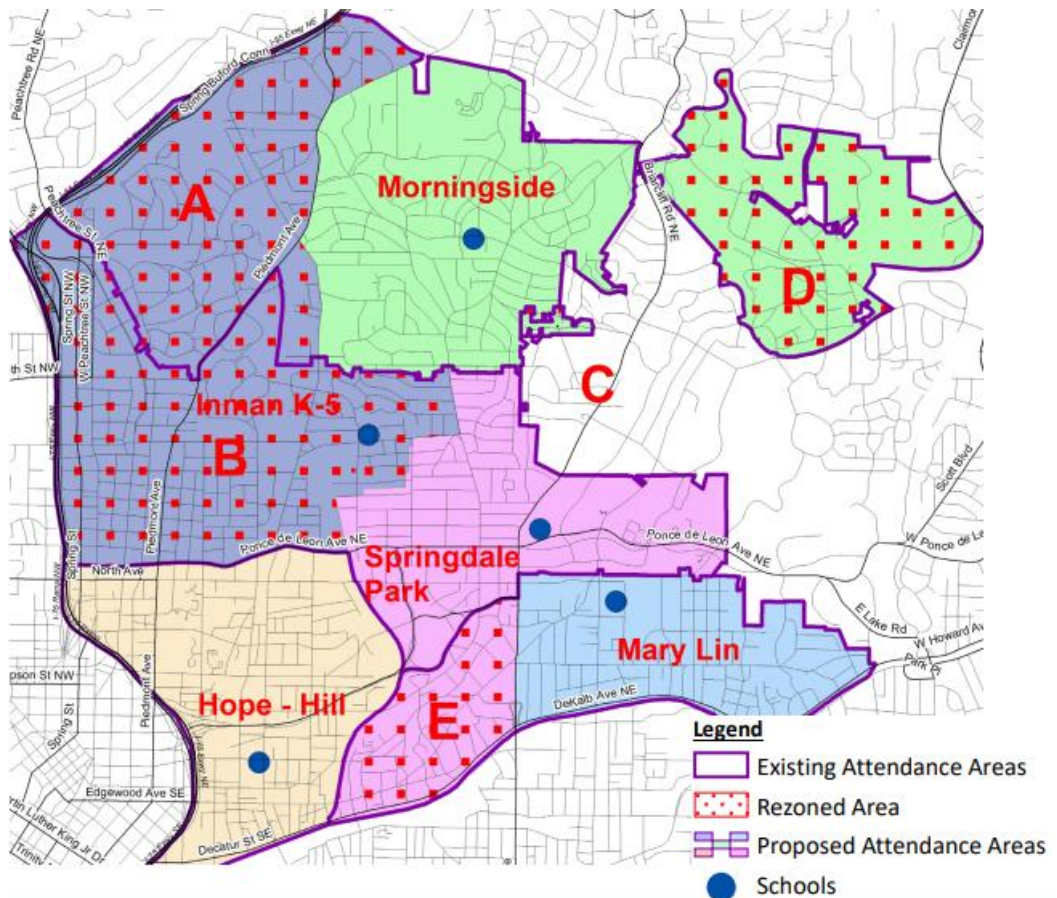
A: Move 239 students from Morningside, north and west roughly along Piedmont Ave. to the Inman Facility.

B: Move 400 students from western portion of Springdale Park to the Inman facility.

C: Move 8 students from the Isolated area east of Morningside from Springdale to Morningside

D: Move 14 students from the DeKalb County/Emory Annexed area (in Springdale zone) to Morningside

E: Move 159 Students, west of Moreland Ave in the Mary Lin attendance area to Springdale Park



Detailed
Map



MIDTOWN CLUSTER

AN OVERVIEW OF SCENARIOS PRESENTED BY THE FACILITIES MASTER PLANNING PROCESS

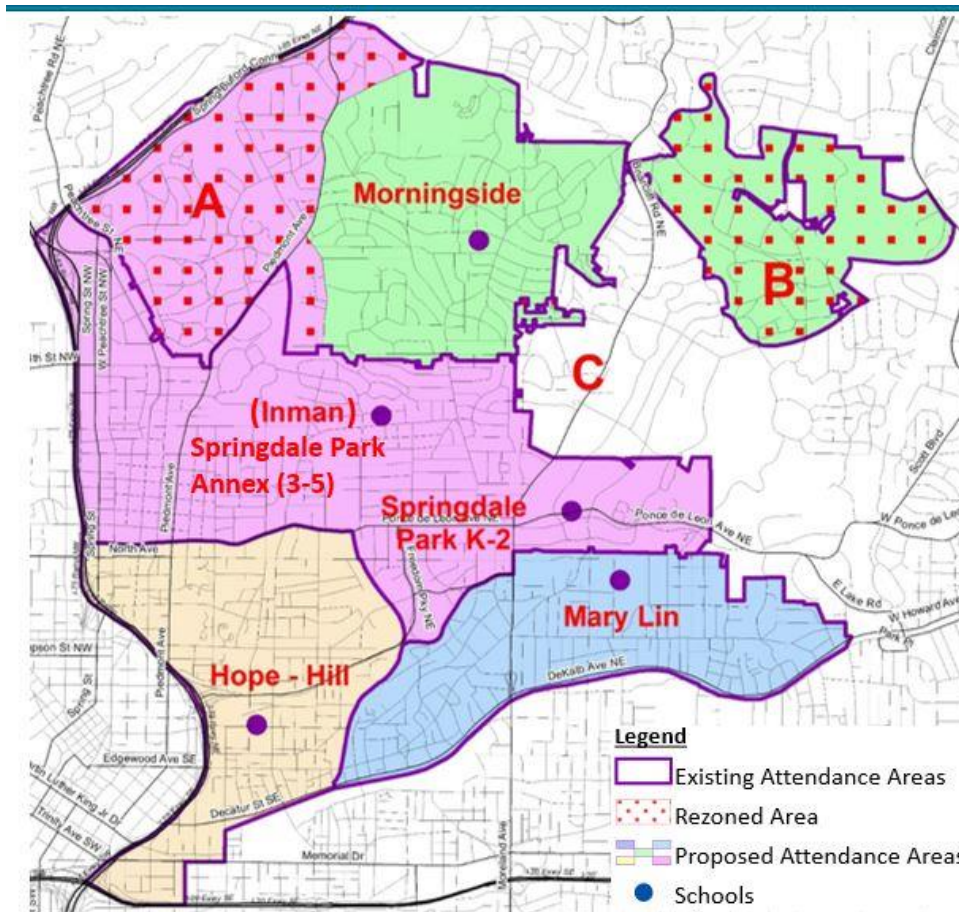
SCENARIO 2 (Elementary Schools)

Create a Dual Campus at Springdale Park (K-2) and the Inman Facility (3-5) (2023-2024)

A: Move 239 students from Morningside (K-5) North and West roughly along Piedmont Ave. to Springdale Park (K-2/3-5)

B: Move 14 students from the DeKalb County/Emory Annexed area in Springdale to Morningside

C: Move 8 students from the Isolated area east of Morningside from Springdale to Morningside



Detailed
Map



HOW CAN I SHARE MY THOUGHTS?

Attend a community meeting on March 22nd. You can find more information here: www.atlantapublicschools.us/FMP

Please share feedback here: <http://tinyAPS.com/?MidtownFacilities>



MIDTOWN CLUSTER

AN OVERVIEW OF SCENARIOS PRESENTED BY THE FACILITIES MASTER PLANNING PROCESS

FURTHER DATA BREAKDOWN

School	"As-Is" 2026-27 SY		
	Enrollment	Capacity	Utilization
Hope-Hill ES (K-5)	408	497	82%
Inman ES (K-5)	0	932	0%
Mary Lin ES (K-5)	625	758	82%
Morningside ES (K-5)	896	867	103%
Springdale Park ES (K-5)	801	758	106%
Centennial Academy(K-8)*	812	606	134%
Howard MS	1173	1656	71%
Midtown HS	1820	1700	107%

School	Scenario 1. Inman as K-5			
	Enrollment	Enrollment Difference	Capacity	Utilization
Hope-Hill ES (K-5)	408	0	497	82%
Inman ES (K-5)	643	+643	932	69%
Mary Lin ES (K-5)	466	-159	758	61%
Morningside ES (K-5)	679	-217	867	78%
Springdale Park ES (K-5)	548	-253	758	72%
Howard MS	1173	0	1656	71%
Midtown HS	1591	-229*	1700	94%

School	Scenario 2. Inman & SPARK as Dual Campus			
	Enrollment	Enrollment Difference	Capacity	Utilization %
Hope-Hill ES (K-5)	408	0	497	82%
SPARK Annex @ Former Inman (3-5)	516	+516	932	55%
Mary Lin ES (K-5)	625	0	758	82%
Morningside ES (K-5)	679	-217	867	78%
Springdale Park ES (K-2)	516	-285	758	68%
Howard MS	1173	0	1656	71%
Midtown HS	1591	-229*	1700	94%

* Separate scenarios address capacity at Midtown HS by redistricting the Centennial Academy zone to the Washington Cluster (229 students)