



PARENT CHAT
MITIGATION STRATEGIES
UPDATE
AUGUST 24, 2021

CAROLINE BROWN
TERUKO DOBASHI-TAYLOR

PRINCIPAL
ASSISTANT PRINCIPAL

THANK YOU!

To all of the Toomer Families who work to ensure that we have a safe and inviting school.

Much appreciation for your willingness to share your thoughts and ideas.

We know you are only thinking of the best interest of your child as you should.

So, thank you,

Also thank you Betsy for always filtering!

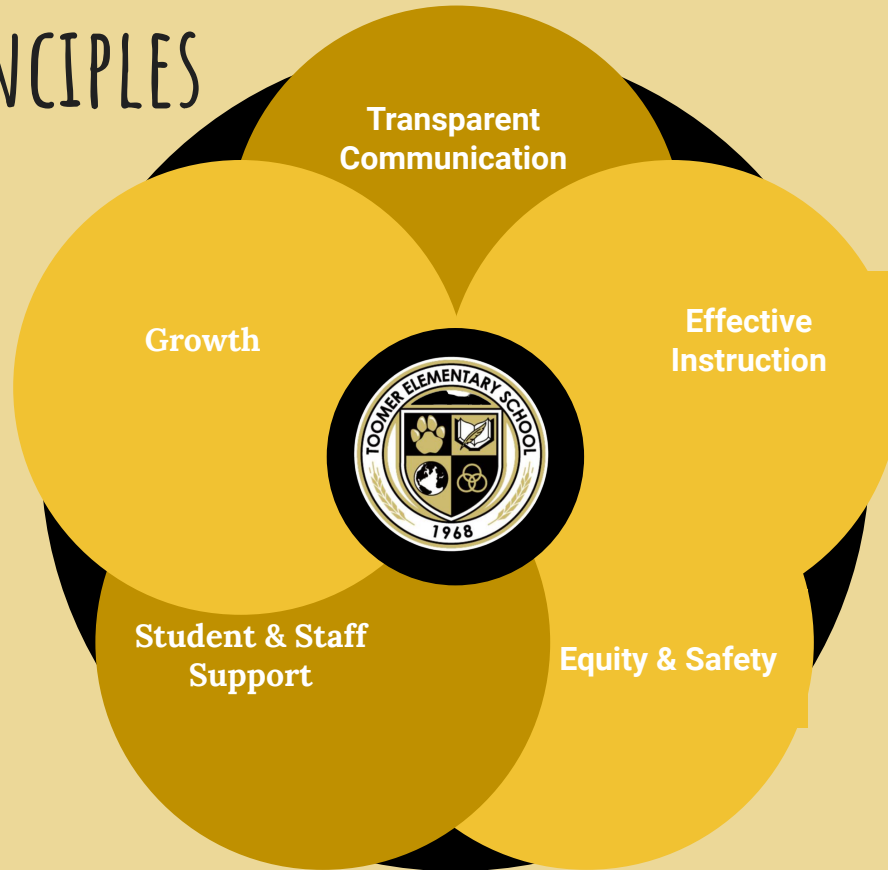
FORMAT

As each slide is presented questions will be asked in the chat.

Questions for the good of the group will be answered after the slide.

Questions of a more individual concern should be emailed to caebrown@atlanta.k12.ga.us

GUIDING PRINCIPLES



HEALTH & SAFETY

KEY MITIGATION STRATEGIES

1

Masks

Encourage consistent and correct use of face masks, by all students, teachers, and staff to prevent SARS-CoV-2 transmission through respiratory droplets.

2

Social Distancing to the extent Possible

Maintain a distance of at least 6 feet between people.

3

Hand hygiene & Respiratory Etiquette

Reinforce handwashing with soap and water for at least 20 seconds and increase monitoring to ensure adherence among students and staff.

4

Cleaning & Disinfection

Clean and disinfect frequently touched surfaces (e.g., playground equipment, door handles, sink handles, toilets, drinking fountains) within the school and on school buses at least daily or between use as much as possible.

5

Contact Tracing

Systematic contact tracing of infected students, teachers, and staff in collaboration with local health department.

MASKS

- The school will provide masks and face shields to every student and staff member. (*Shields to keep students and staff safe during eating breakfast and lunch*)
- Proper mask and shield etiquette will be reviewed and revisited by the nurse often.
- Teachers will keep a close eye on students to ensure they keep THEIR mask the entire time.



SOCIAL DISTANCING

- Individual desks will be used in classrooms.
- Desk will be placed about 3 ft apart in groups of 4.
- Students will be encourage to create space while walking through the halls

CDC updates physical distancing requirement for students:



3 feet

if everyone wears a mask

SOCIAL DISTANCING AND EATING

- No more eating in the classroom.
- Master schedule adjusted to allow for eating in the lunch room
- Master schedule adjusted to allow for a snack break.
- Eating may happen outside or in the lunchroom.

CAFETERIA

- 90 seats, 18 per sets of three tables
(Instead of the 270)
- Classes have their own tables
- Breakfast is optional, students in an out.
No waiting for dismissal.
- We have dividers and have order hardware
to install.

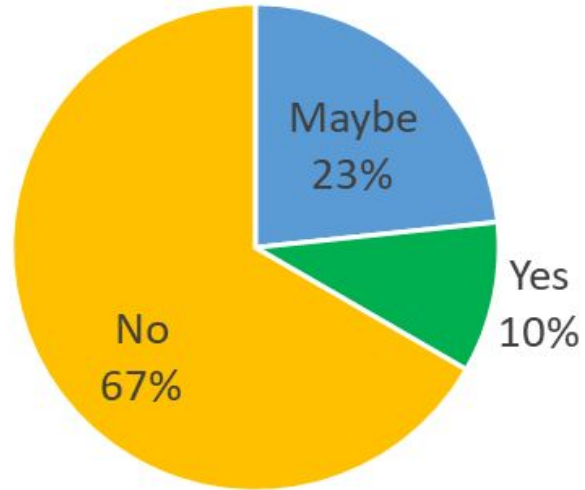
OUTSIDE EATING

- **Greatly appreciate the offer of additional resources to accommodate outside eating.**
- None of the Jackson cluster elementary schools offer outside eating.
- Concerns: trash, rodents, stinging insects

TEACHER VOICE

Interested in Eating lunch outside?

Concerns:
Weather
Insects

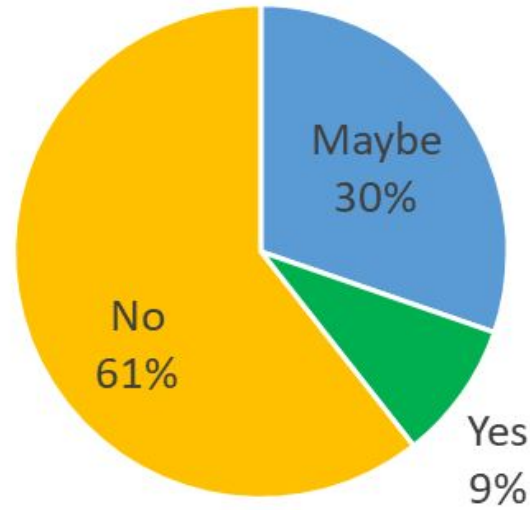


Covered;
seating;
fans

TEACHER VOICE: TEACHING OUTSIDE

Interested in Teaching outside?

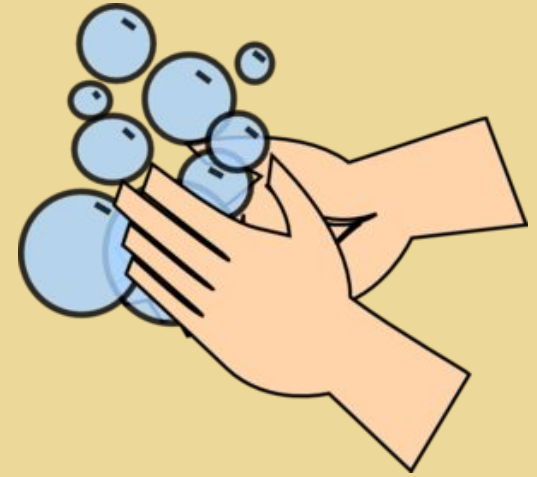
Concerns:
Weather
Insects



Covered;
seating;
fans
noise

HAND HYGIENE & RESPIRATORY

- Daily education around proper handwashing, coughing procedures, and hand sanitizing will be provided during the SEL block & revisited during the nurse's visit.
- Hand disinfectant stations have been placed strategically throughout the building.
- Deep cleaning of all hard surfaces and touch points.

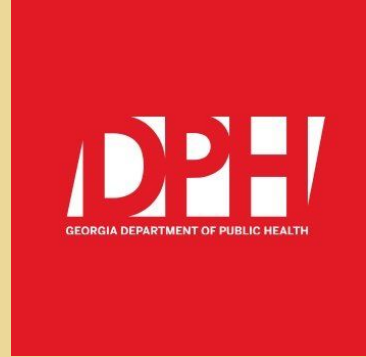


CLEANING & DISINFECTANT

- After each scheduled restroom break, custodians will clean each stall with disinfectant.
- All teachers/classrooms will be provide with cleaning supplies to sanitize personal and student desks during the day.
- Deep cleaning will occur when ever a case of covid-19 has been identified.



PROCESS FOR TRACKING & TRACING COVID-19 CASES



Out of an abundance of caution we will continue to quarantine the entire classroom as cases are identified.

PROCESS FOR TRACKING & TRACING COVID-19 CASES

- Exposure date is identified (this is not always on Wednesday, we have self reporting)
- Go back 2 days to identify possible contacts
- 5 days out from the last date of exposure, as the earliest possible test date
- 8th day earliest return with negative rapid or pcr
- 11th day return with no rapid or pcr test
- Vaccinated individuals do not have to quarantine, we test and watch for symptoms.

Class reports on zoom with a modified schedule.

PROCESS FOR TRACKING & TRACING COVID-19 CASES

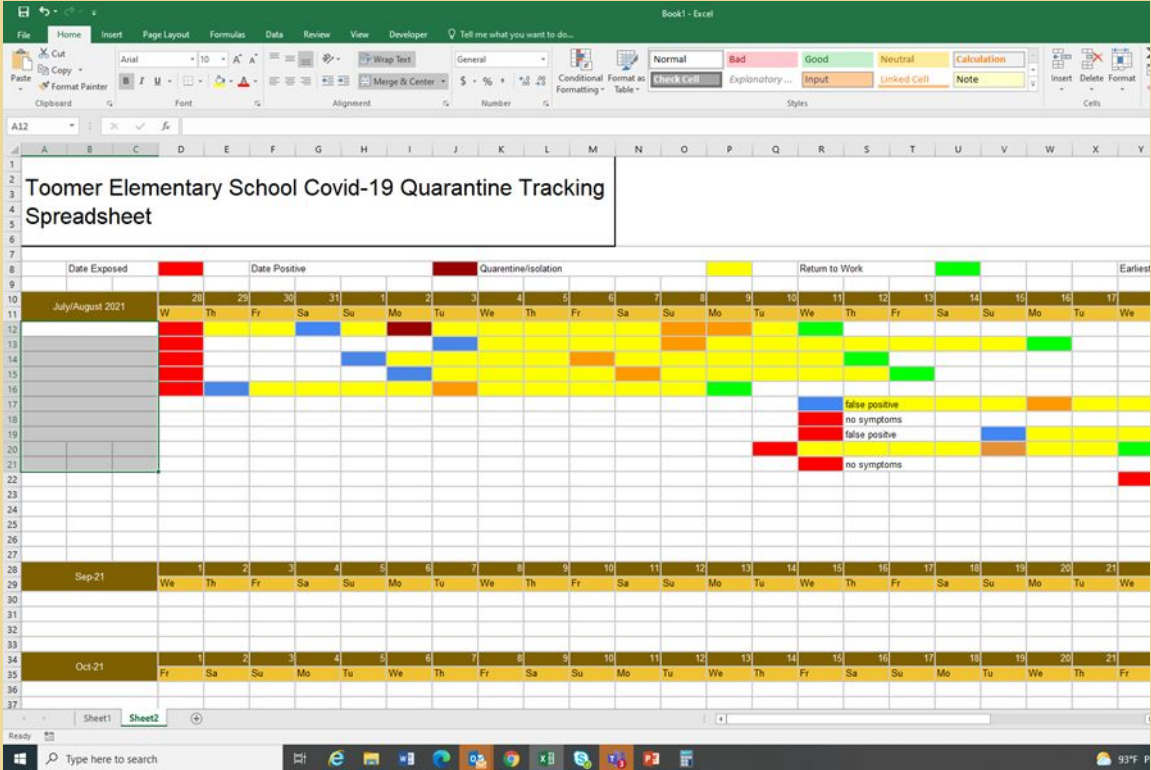
- Singles

This happens when a family member (in the same household) test positive.

Setting up teacher Tutors to work with students in the after school hours to complete work. No more than 2 hours.

Can not chose this option unless required to quarantine.

PROCESS FOR TRACKING & TRACING COVID-19 CASES



CARE ROOM

CARE Area: Stage

- A designated well-ventilated quarantine location will be accessible to students until a parent/guardian arrives.
- The designated space will be equipped with sanitizable cots & privacy curtains.
- The student or staff will be monitored at all times by the nurse or other staff gowned in full PPE until the parent/guardian arrives.
- Parents/Guardians will be asked to pick students up from the **side cafeteria door** including siblings of the student exhibiting symptoms.

Quarantined Students must be picked up by parent, not allowed to ride the bus.

VACINATED STAFF

Currently the district has 80% vaccination rate for school based employees.

75% of all school based staff responded to the last survey.

FACILITIES

BUILDING CLEANLINESS



- Building is cleaned nightly.
 - Night custodians will use foggers and deeper cleaning agents to sanitize the building in case of a positive covid-19 test.
- Custodians will follow a strict schedule that will include the following:
 - Wiping touch points numerous times throughout the day.
 - Cleaning will occur after each scheduled restroom break.
 - Custodians will be on a schedule for each classroom while students are outside.
- Teachers will be provided wipes/spray bottle and cleaning pad to clean classroom surfaces/personal work spaces as needed daily.

VENTILATION

All air filters have been updated by the district.

All systems have been tested for air movement with the inside air circulated about 6 times per hour (per facilities)

Purchase of classroom air circulators.

ACCESS

Visitors are not allowed in the building. This includes extended families and volunteers. We are currently not allowing parents in the building effective tomorrow.

Entry only through the main doors.