

# International Baccalaureate

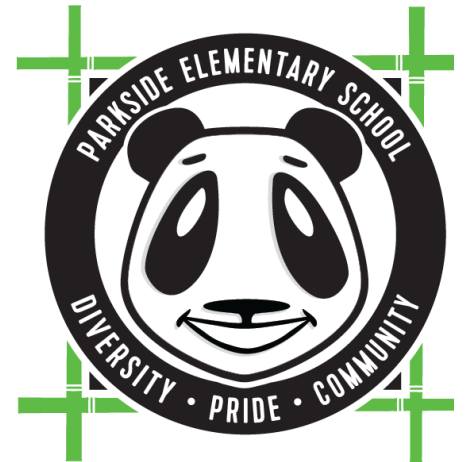
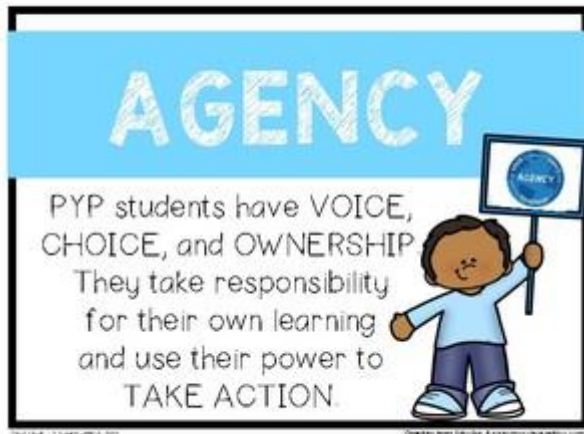
Ramia Lowe, IB Coordinator  
rslowe@apsk12.org

## Student Agency – What's your passion?

Developing student agency is one of the most important things we can do as parents and educators to prepare our students for the future.

Student agency is about the students taking an active role in their own education.

Encouraging student agency helps students take an active role in their own learning, increases their confidence, motivation and interest in activities.



Dedicated to  
excellence in  
education

## Learner Profile

### Attribute of the Month

## Risk-Taker

Students who are **RISK-TAKERS** approach unfamiliar situations with courage, while exploring new roles, ideas, and strategies.

## COVID-19 Tips to Protect Yourself and Others

**Watch your distance** –  
Remain 6 feet from others  
when possible.

**Wash your hands** and use  
hand sanitizer.

**Wear a mask** that covers  
your nose and mouth.

## Community Connections

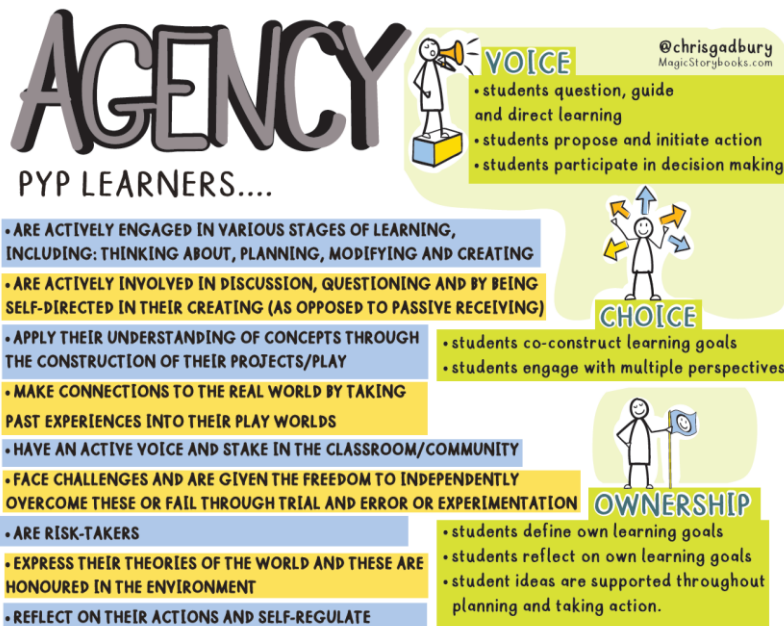
### How can we support Student Agency at home?

- ✓ **Set goals** – These can be academic or personal. Setting goals help students develop awareness, self-discipline, impulse control and stress management.
- ✓ **Initiate and action toward the goals** – Create steps to work toward the goal.
- ✓ **Reflect and Revise** – Check in regularly to see your student's progress toward their goal.
- ✓ **Passion Project** – If your student seems not to be motivated, they may need a passion project. A passion project can be on anything that piques your student's interest. Giving the student the opportunity to pick their own project helps them set their goals and expand their interests.

---

### IB Terms and Acronyms You Need to KNOW

---



## Knowledgeable Contest

Wonderopolis.org is a great site for students to inquire and learn about different topics. This site is a place where natural curiosity and imagination leads to exploration and discovery in learners of all ages.

**This month's challenge:** Use wonderopolis.org to find the wonder of the day #1365 "**How Do You Turn Over a New Leaf?**"

The first Parkside IB Learner to submit one of the "Try It Out" activities to Mrs. Lowe will receive a special prize!

---

### Follow Us



Parkside IB @ParksideIB

**WE ARE  
#Getting IB STRONGer  
Together !**