



Therrell Cluster

Tuesday, April 12, 2022

APS NEXT > Engaged Community.



Today's Agenda and Logistics

Designed to share and engage around the **now**, **next**, and **need** of your cluster.

- Welcoming
- APS: Now, Next Need
- Cluster: Now, Next Need

Throughout the presentation, a handout is available to connect our activities with our draft cluster plan.



Welcome and thank you!

APS NEXT > Engaged Community.

Where do innovation & technology
intersect with teaching & learning?

Atlanta Public Schools

NOW...





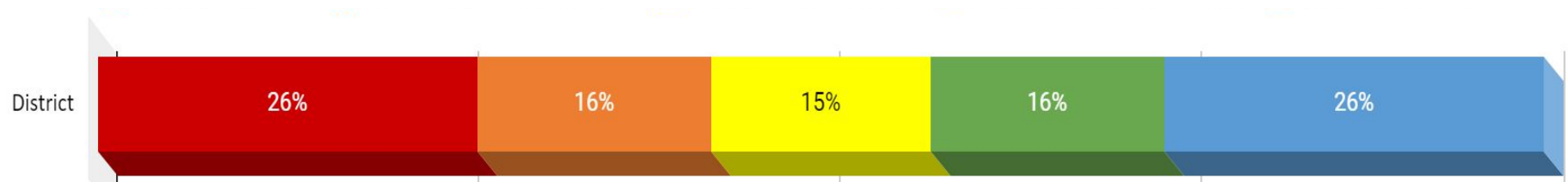
APS Academic Data

83.1%

Cohort 2021 | 4-year Graduation Rate

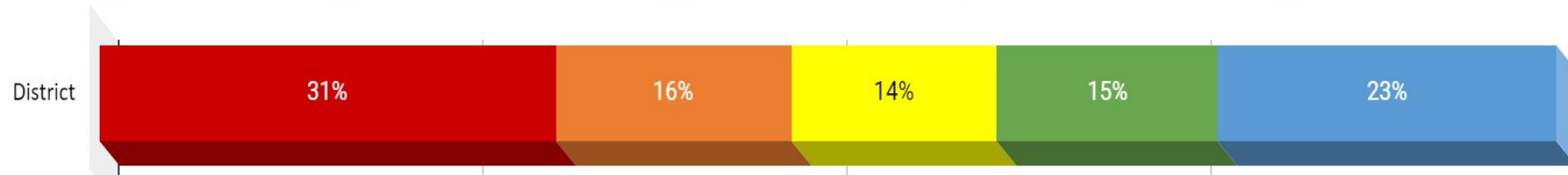
Growth Percentile | Math

Fall to Winter



Growth Percentile | Reading

Fall to Winter





What is the APS5?

Therrell Cluster... Shines Bright!






**Your involvement is the key
to our success...**

APS NEXT > Engaged Community.

Activity 1

Families & Communities

— I feel most engaged when ...
I feel least engaged when ...



About the Therrell Cluster

The Therrell Cluster works innovatively and collaboratively to cultivate a culture of excellence for the students and community. The emphasis on career and college readiness benefits students through rigorous academics, project based learning, a strong foundation in critical thinking and inquiry, as well as fine arts that foster student creativity.

The IB programme exposes students to a broad and inclusive curriculum that not only prepares students to be successful in college and career, but also nurtures their artistic abilities, talents, and social responsibility towards becoming lifelong learners.

- Aspiration
- Signature program
- Cluster feeder schools
- Cluster data
- School highlights
- What's next?

Aspiration and Existence

Mission: With a student-centered, caring culture of inclusiveness and collaboration, all students will graduate globally aware and ready for college, career and life.

Vision: Our vision is to be a high-performing cluster where all stakeholders work together to ensure students are empowered to become 21st century globally competitive citizens.





Signature Program

International Baccalaureate (IB)

- Inquirers
- Knowledgeable
- Thinkers
- Communicators
- Principled
- Open-minded
- Caring
- Risk-takers
- Balanced
- Reflective



Schools in the Therrell Cluster



Continental Colony

Deerwood Academy

Fickett

Kimberly

Bunche

Therrell

Enrollment Data

3,567

Cluster Total Enrollment

Category Percentages:

- Black/African American | 95.0%
- Hispanic | 3.6%
- Two or more races | 0.7%
- White | 0.2%
- SWD | 11.5%
- Gifted | 3.7%
- EL | 2.9%

School Totals:

- Continental Colony | 396
- Deerwood Academy | 558
- Fickett | 479
- Kimberly | 332
- Bunche | 861
- Therrell | 941



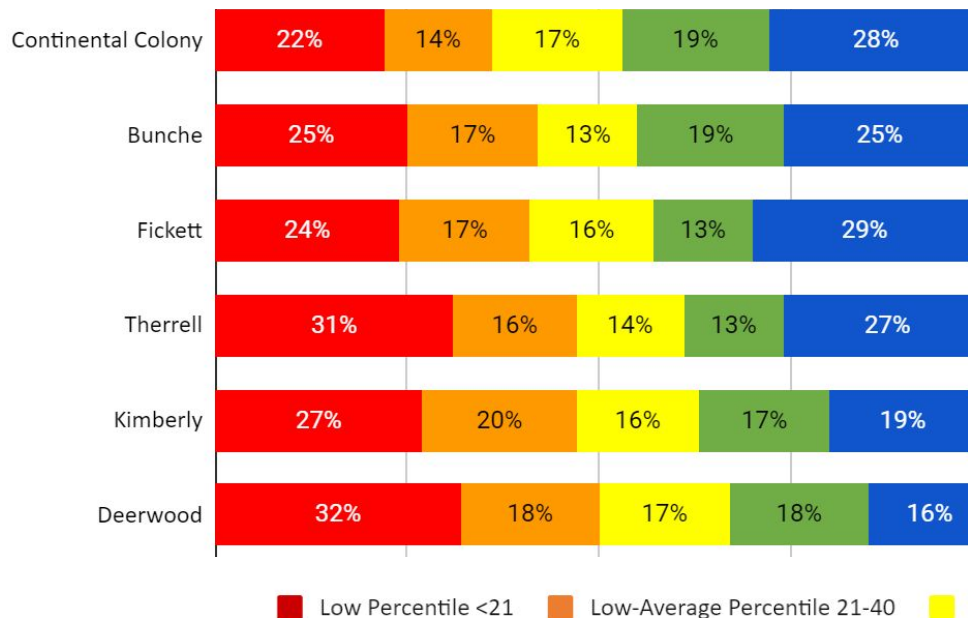


Academic Data

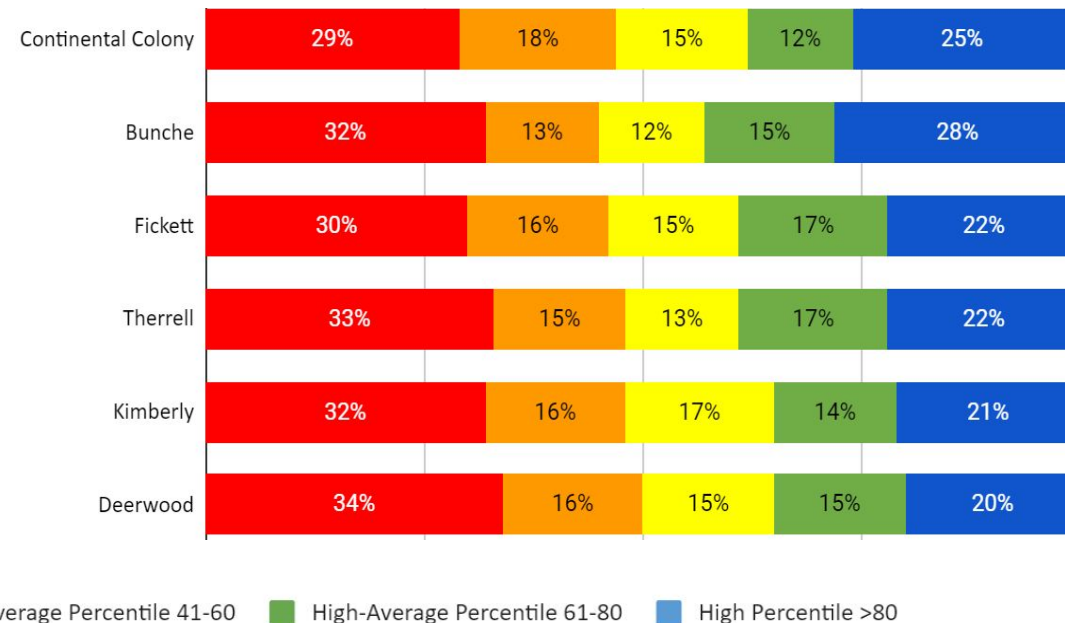
83.5%

Cohort 2021 | 4-year Graduation Rate

MAP Growth Percentile | Math Fall to Winter



MAP Growth Percentile | Reading Fall to Winter



Culture Data

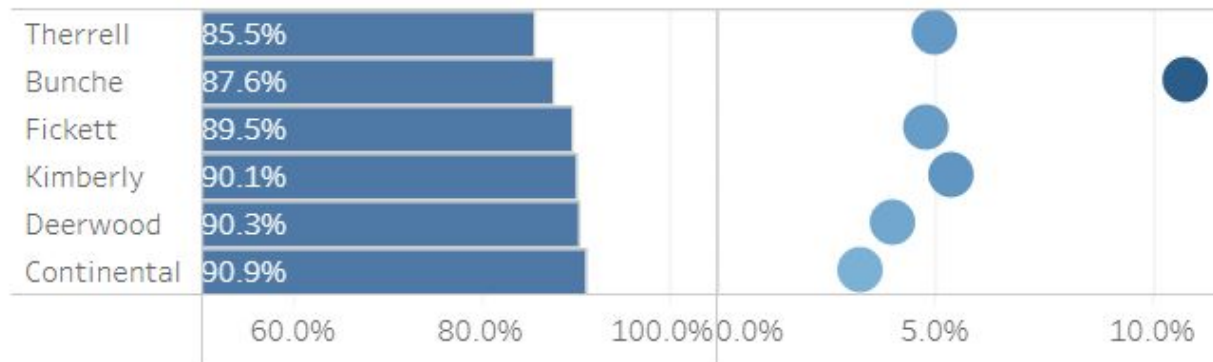
88.2%

Average Daily Attendance

72.5%

with Zero Behavior Incidents

Comparison | Across Schools & Difference from Last Year



7

Cluster Schools

The Highlights

Continental Colony

Together We Will Increase Life Chances



STUDENT ENGAGEMENT

- IB Authorized for PYP (2021)
- 1st Place Medals in Debate Team Competitions
- 1st Place Audio Production APS Technology Fair
- IB Units 1-4 Student Action
- 5th Grade Exhibition Project Collaboration
- Student Game Changers (met or exceeded growth goals in reading and math)



STUDENT SUPPORT

- Girls on the Run
- Cubs to Panthers
- Morning Mindfulness
- Student Goal Setting



COMMUNITY COLLABORATION

- Community School Yard Collaboration with Trust and Public Land
- Green Infrastructure Project with Department of Watershed Management and Starr Whitehouse Landscape Architects and Planners



Deerwood Academy

Technology in Action



- Personalized Learning Wave 1
- 1st Place Regional Technology Fair - Multimedia Application
- Innovation Lab
- Abii 21st Century Smart Robot Tutor
- Girls Who Game
- District GWG Representative and Coach
- Weekly Parent Connect Sessions

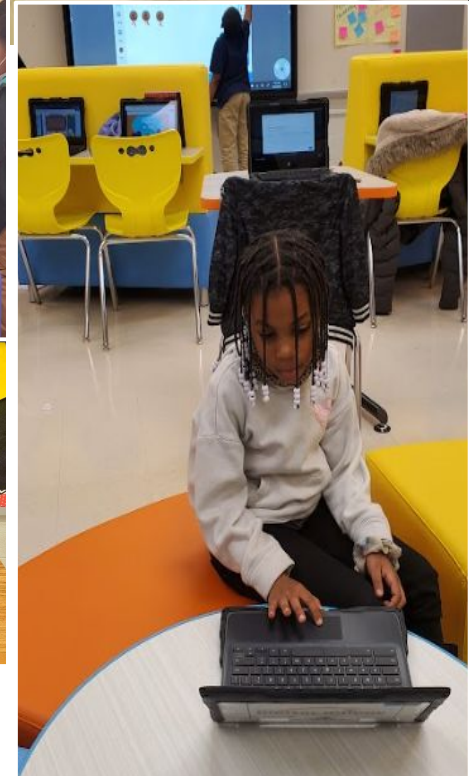
Growing Hearts & Minds

- Student & Adult SEL
- Phonics and Literacy Lab
- Leap Year Reading Tutor Partnership
- Exact Path
- GADOE Recognized PBIS School
- SEL Program featured in DefiningUS Documentary
- Scholar's Pantry Partnership
- Kate's Club



IB Global Thinking

- IB PYP Authorized School est. 2010
- French Language, PK - 5
- Monthly Parent Academy
- Emory Urban Debate League Top Scorers
- UN Global Goals IB Service Learning Project
- Learning Commons



Richard Nathaniel Fickett Elementary School

- Equity Champion School
- Major Partnerships(\$200, 000)
- Waiting IB Authorization
- Community Garden
- Students placed 2nd Place in District Technology Fair
- Telehealth
- Minecraft/Coding Lab

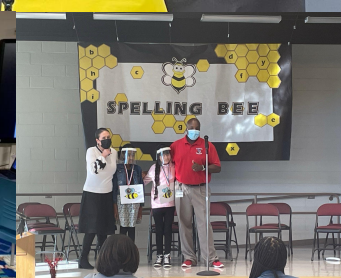
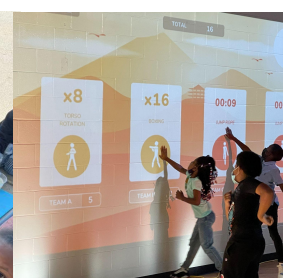
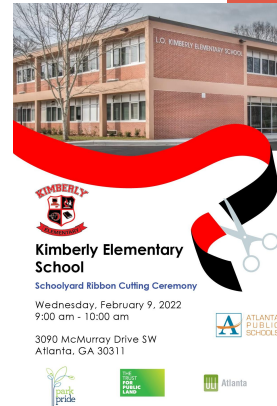


fearless. focused. forward thinking!



Kimberly

- Principal Salley named Principal of the Year Finalist 2021
- Teacher of the Year District Semi-Finalist
- IB Candidacy December 2021
- Participating in the Amazon Boot-up Program
- Successful Participation in District Debate
- Students placed Silver & Bronze in District Science Fair
- Community Schoolyard Ribbon Cutting-February 2022
- 1st Annual Black History Poetry Slam
- New Interactive Promethean Panels for all classrooms
- Interactive Lu in gymnasium
- Glow Girls Club
- Greenish Garden Club



Bunche

- Verizon Innovative Learning grant recipient
- District and State Science Fair Participant
- 2nd place poster contest winner for Atlanta Public Schools College and Career Motivation Week
- Successful Race to Hate Rally, feeder school transition meetings, and Rising 6th Grade Parent Night
- 25 students inducted into the National Beta Club
- 1st Annual Bunche Got Talent showcase
- Runner-up for Boys Basketball championship
- Boys Football semi-finalists
- 21-22 Division Cheerleading championship winners
- Softball team play-offs
- Girls Track Finals qualification



Therrell HS

Notable Achievements

- “980+” PBIS School Wide Initiative - [Why Therrell Video](#)
- PAAWS Program Credit Recovery
- Dr. Terrell Green Awak named APS Assistant Principal of the Year Finalist 2021
- Placed 3rd place APS Academic Decathlon
- AP Honor School by the State of Georgia, 2021

International Baccalaureate World School

- Authorized for MYP (2018), CP (2020), and Candidacy Phase of DP authorization
- IB Cohort 2022 - 18 students

Athletics:

- **State Playoffs:** Girls Flag Football, Boys Basketball, Girls Soccer, Baseball (Ranked 18th in 2A)
- **Scholarships:** Khamar Carlisle, Cohort 2022 (Football - Morehouse College); Gerniah Stewart, Cohort 2023 (Flag Football - Reinhardt University)
- **All Region:** Djibril Barry, Cohort 2022 (Boys Basketball); Amaya Broadus, Cohort 2024 (Girls Basketball); Kameron Slade, Cohort 2022 (Football);
- **Community:** Class of 1971 donated announcer booth (\$20k)

Community Partnerships

- **Programming:** UPS, Deloitte (CTAE), At Promise Center Youth Center, Georgia Tech University - Project Engages
- **Mentoring:** Girls, Inc., Emerging 100 of Atlanta, Big Brothers Big Sisters of Metro Atlanta, Kids In Need Foundation



Activity 2

Schools

I feel most proud of ...
I feel least proud of ...

Looking Ahead

3 Areas of Focus | Students, Schools, Families & Communities

It is time to pivot to create an enhanced reality to provide new and innovative opportunities to address students' individual needs.

What's Next for the Therrell Cluster?

Students

- Students attend school ready to engage and learn every day
- Students are encouraged to have a voice and advocate for their growth
- Students are exposed to their global and local communities through real-world connections



I see a caring environment centered around positive behavioral support to support student's social emotional well being

What's Next for the Therrell Cluster?

Schools

- Every school addresses the social emotional wellbeing of students and staff
- Classrooms consistently embed IB throughout all content areas
- Teachers provide instruction tailored and relevant to each student's needs
- Teachers are encouraged to learn and grow



Parent engagement is more than a Public Relations stunt...it requires doing the work to help the parents with resources

What's Next for the Therrell Cluster?

Families & Communities

- Families are active partners in their student's and school's success
- Families are supported and encouraged
- Cluster schools have long-term, meaningful partnerships with organizations



Activity 3

Students

To support my/our
student(s), I commit to ...



THANK YOU

APS **NEXT** > Engaged Community.

Therrell Cluster

What's Next?



STUDENTS

Students attend school ready to engage and learn every day

Students are encouraged to have a voice and advocate for their growth

Students are exposed to their global and local communities through real-world connections

It is time to pivot to create an enhanced reality to provide new and innovative opportunities to address students' individual needs.



SCHOOLS

Every school addresses the social emotional wellbeing of students and staff

Classrooms consistently embed IB throughout all content areas

Teachers provide instruction tailored and relevant to each student's needs

Teachers are encouraged to learn and grow

I see a caring environment centered around positive behavioral support to support student's social emotional well being



FAMILIES & COMMUNITIES

Families are active partners in their student's and school's success

Families are supported and encouraged

Cluster schools have long-term, meaningful partnerships with organizations

Parent engagement is more than a Public Relations stunt...it requires doing the work to help the parents with resources

Therrell Cluster

DRAFT Cluster Plan

STUDENTS

Students attend school ready to engage and learn every day

- Develop a school and cluster-wide plan to increase daily attendance and accountability

Students are encouraged to have a voice and advocate for their growth

- Increase opportunities for students to compete
- Build the capacity of all students to own and advocate for their own learning

Students are exposed to their global and local communities through real-world connections

- Develop community projects for students
- Seek opportunities where students can interact with other students outside of their school and community
- More consistent exposure to less traditional careers

SCHOOLS

Every school addresses the social emotional wellbeing of students and staff

- Embed SEL and PBIS practices in curriculum and school culture

Classrooms consistently embed IB throughout all content areas

- Align all aspects of instruction and school culture to the IB Learner Profile

Teachers provide instruction tailored and relevant to each student's needs

- All schools implement personalized learning

Teachers are encouraged to learn and grow

- Provide teachers with PD in the areas of IB philosophy, learner profile, and approaches to teaching and learning
- Focus on retaining high performing teachers

FAMILIES

Families are active partners in their student's and school's success

- Every school has an effective PTA and GO Teams

Families are supported and encouraged

- Celebrate our Families and Community Partners

Cluster schools have long-term, meaningful partnerships with organizations

- Develop partnerships to provide job opportunities, skills and resources for parents and families to assist in self-development and life skills
- Develop partnerships for additional funding support