



WHITEFOORD

Martin Luther King, Jr. Middle School School-Based Health Center

Healthy children are more likely to succeed in school. That's why Whitefoord operates school-based health centers (SBHCs) to provide quality medical, dental, and behavioral health care for school students and staff inside schools and during school hours. King's SBHC is always accepting new patients! We do not turn people away regardless of income or insurance status.



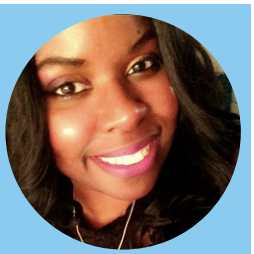
Dr. Karyl Patten
Dentist/Director of
Dental Services



LaNika Patterson
Family Nurse
Practitioner



Tiffany Shannon
Dental Hygienist



Sharae Hanley
Licensed Clinical
Social Worker

Hours of Operation

**Tuesday–Friday:
8:00am – 5:00pm**
Closed daily from
12:30pm–1:30pm

**Visit our website
for more
information, such
as learning about
our *Sliding Fee
Discount Program*
and accepted
insurances.**



PRIMARY CARE

- Immunizations
- Physicals
- Wellness Exams
- Sick Visits



BEHAVIORAL HEALTH

- Individual Therapy
- Family Therapy
- Psychiatry Services



DENTAL

- Screenings
- Cleanings
- Dental Services

Martin Luther King, Jr. Middle School

545 Hill Street SE, Atlanta, GA 30317



404.373.6614



comments@whitefoord.org



www.whitefoord.org