

Douglass Cluster

Potential Rezoning Impacting Woodson Park Academy, John Lewis Invictus Academy (JLIA), Boyd Elementary, FL Stanton Elementary, and Usher-Collier Elementary

WHAT IS THE CHALLENGE?

Woodson Park Academy, a Kindergarten through 8th Grade Partner School in the Douglass Cluster, is overcrowded.

Currently, Woodson Park Academy has 877 students, with space for 820 students. It is projected to grow each year, with 948 students projected in 5 years.

WHAT ARE THE OPTIONS?

- Both options would create a walk-zone for John Lewis Invictus Academy (JLIA)
- If approved, rezoning would take place in the Fall of 2025
- Both options would send students from Woodson Park Academy to JLIA and Boyd ES

1

Rezone from Woodson Park (K-8) to F.L. Stanton ES, Boyd ES, and JLIA MS

Overview

- Rezone portions of Woodson Park to F.L. Stanton ES and Boyd ES
- Rezone portions of Woodson Park to JLIA MS

Impacted Neighborhoods

- Dixie Hills*
- Grove Park*
- Penelope Neighbors*
- West Lake*

* Part of Neighborhood

2

Rezone from Woodson Park (K-8) to Usher-Collier ES, Boyd ES, and JLIA MS

Overview

- Rezone portions of Woodson Park to Usher-Collier ES and Boyd ES
- Rezone portions of Woodson Park to JLIA MS

Impacted Neighborhoods

- Carey Park*
- Center Hill*
- Grove Park*

* Part of Neighborhood

WHAT IS NEXT?

1. Please learn more here: https://www.atlantapublicschools.us/Annual_Review
2. Use Let's Talk to share your feedback: <http://tinyAPS.com/?LetsTalk>
3. In April, the district will narrow down from two to one scenario and engage the community.
4. Any rezoning would go to the Board for First Read in May.

Douglass Cluster

Potential Rezoning Impacting Woodson Park Academy, John Lewis Invictus Academy (JLIA), Boyd Elementary, FL Stanton Elementary, and Usher-Collier Elementary

1 Rezoning from Woodson Park Academy to FL Stanton ES, Boyd ES, and JLIA MS

- 195 students impacted (72 to FLS ES; 63 to Boyd ES; 60 to JLIA MS) in 2025-26
- Walk-zone created for JLIA MS

Area A: Parts of Grove Park (98 students total in 2025-26)

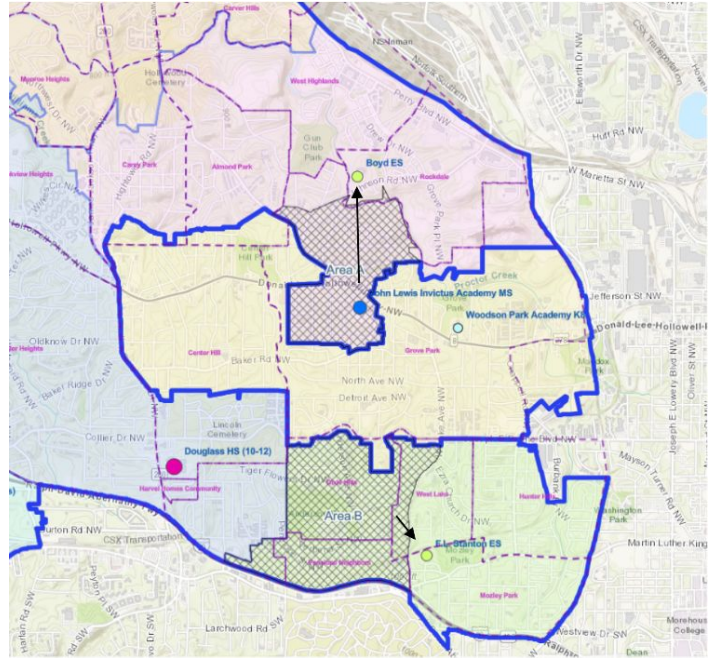
from Woodson Park to Boyd ES and JLIA MS

Area B: Parts of Dixie Hills, Penelope Neighbors, and West Lake (97 students total in 2025-26)

from Woodson Park to FL Stanton ES and JLIA MS



<http://tinyAPS.com/?DouglassOption1>



2 Rezoning from Woodson Park Academy to Usher ES, Boyd ES, and JLIA MS

- 174 students impacted/reduced (63 Boyd ES; 50 Usher ES; 61 JLIA MS) in 2025-26
- Walk-zone created for JLIA MS

Area A: Parts of Grove Park (98 students total in 2025-26)

from Woodson Park to Boyd ES and JLIA MS

Area C: Parts of Center Hill and Carey Park (76 students total in 2025-26)

from Woodson Park to Usher ES and JLIA MS



<http://tinyAPS.com/?DouglassOption2>

