

CSKYWLA Uniform Dress Code



*Short or Long
Sleeved White
Oxford*



*Short or Long
Sleeved Pink
Oxford*



*Short or Long
Sleeved White
Polo*



*Short or Long
Sleeved Pink
Polo*



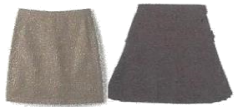
*Short or Long
Sleeved Brown
Oxford or Polo*



*Pink
Vest*



*Brown
Vest*



*Brown or Khaki
Skirt*



Brown or Khaki Pants



*Brown or
Black Tights*



*Brown or
Black Socks*



*Dress Ties
Optional*



*Varsity
Jacket*



CSK Blazer



**Modest
Jewelry*



*Black, Brown
or Pink Hair
Accessories*



*Black, Brown, Pink
White Sneaker or
Shoe*

- o All scholars must wear the approved uniform skirt or pant. The length of the skirt is to be no more than 1" above the knee in front and back. Skirts may not be rolled.
- o All girls are expected to wear the approved school collared shirts without logos or writing. These may be short or long-sleeved, clean and pressed. Blouses/shirts are to be completely tucked in at all times.
- o Chocolate brown knee socks or tights are to be worn with the uniform skirt.
- o Shoes with the uniform should have a low heel, be conservative in style and solid black or solid brown in color. Sneakers may be worn; solid color only - black/brown/pink/ or white. The following shoes may NOT be worn: backless or open-toed shoes, clogs, platform shoes or shoes with ankle straps, slippers, or sandals.
- o All clothing should fit and be worn properly. Oversized, droopy clothing, extremely tight fitting, low overly revealing clothing are not acceptable forms of attire.
- o Extremes in haircuts, hairstyles, or hair color are not permitted. Excessive make-up is inappropriate. Bandannas and head-scarves are never permitted while in uniform - on or off campus.
- o *Earrings no bigger than a quarter may be worn. Tongue rings, nose rings or visible pierced body parts are not acceptable and may not be worn. Visible tattoos are not permitted.



- o All Hoodies must be in pink, brown, and white. No offensive words or images.
- o Crocs should "Not" be worn and are not approved for school uniform.