



Weekly Construction Progress Report

Morningside Elementary School

Week Ending: 08/02/2021

THIS WEEK

- Sitework continues
 - Storm drainage piping installation
- Interior wall framing begins in area A
- Mechanical demolition continues throughout building
- Electrical demolition continues throughout building
- Interior demolition continues
- Mechanical rough-in begins in area B
- Electrical rough-in continues in area A and B
- Plumbing rough-in continues throughout building
- Vapor barrier at plumbing underground rough-in
- Elevator pit installation

NEXT WEEK: 08/09/21 - 08/13/21

- Sitework continues
 - Storm drainage piping installation
 - Building pad grading
- Interior wall framing continues in area A
- Mechanical demolition continues throughout building
- Electrical demolition continues throughout building
- Mechanical rough-in continues in area B
- Electrical rough-in continues in area A and B
- Plumbing rough-in continues throughout building
- Underground rough-in pour back
- Elevator pit installation

BUDGET

Construction Budget

\$17,600,000.00

Budget Status

\$1,290,650.35

Completed By:
Ben Fairchild

PARRISH
CONSTRUCTION GROUP

Photo/Activity Updates

Mechanical demolition



Vapor barrier and dowels at underground plumbing rough-in



Photo/Activity Updates

Site storm drainage installation



Site storm drainage installation



Photo/Activity Updates

Interior wall framing

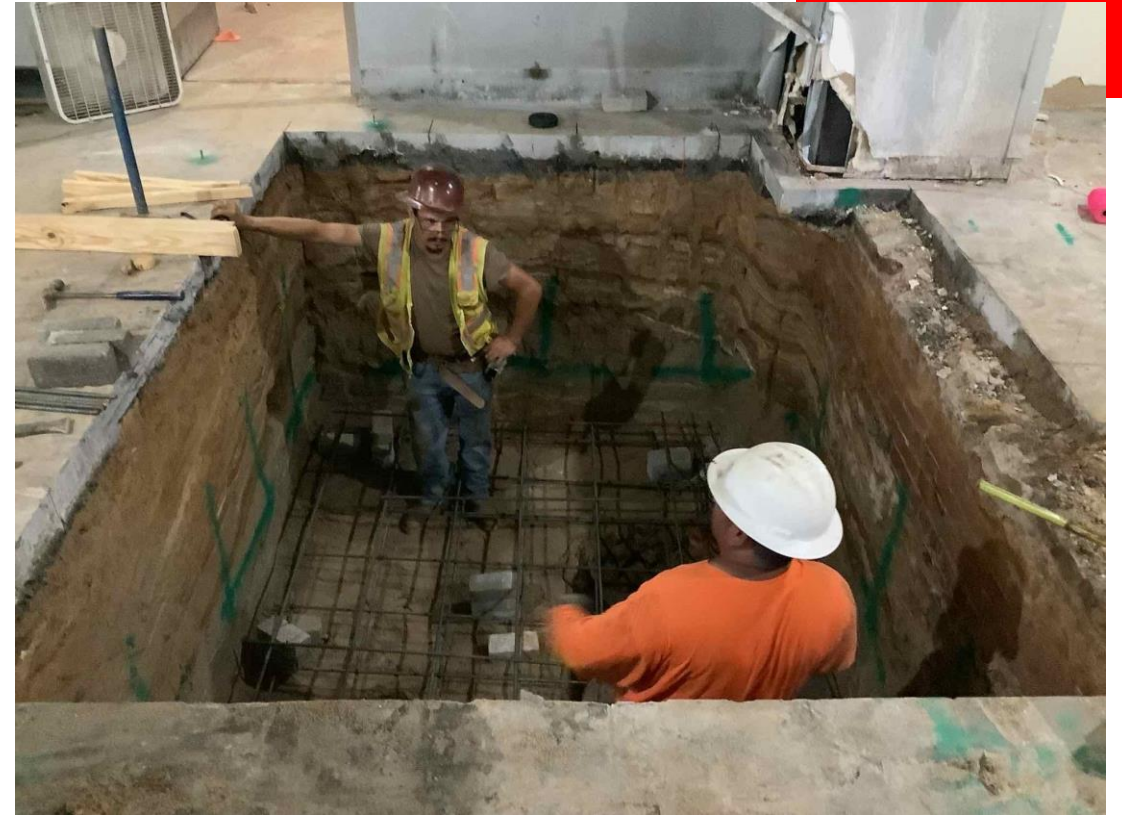


Electrical overhead installation



Photo/Activity Updates

Electrical panel relocation



Elevator pit installation

