

# WEEKLY CONSTRUCTION PROGRESS REPORT

---

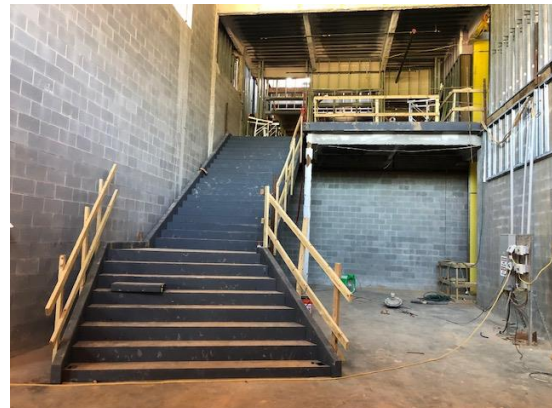
**Project:** Woodson Park Academy & YMCA-ELC  
**Week Ending:** June 19th, 2020

**THIS WEEK:**

- Masonry and Brick continues at WPA
- MEP Overhead continues at WPA
- Framing continues at WPA
- Exterior sheathing at YMCA
- Binder at Bus Loop
- Drywall on Main, 2<sup>nd</sup> and 3<sup>rd</sup> levels
- Window Frame and Glass install at WPA
- Metal Panel sub starting prep work for panel install
- COA inspections – delays occurring due to COVID-19 action



Gym glazing installed at WPA



Momument stair at WPA



North elevation at YMCA



Grading at bus loop



# WEEKLY CONSTRUCTION PROGRESS REPORT



East elevation at WPA



Temp AC at WPA

## **NEXT WEEK – June 22nd thru June 26th:**

- Masonry and Brick continues
- MEP Overhead continues
- Framing continues
- Drywall on Main, 2<sup>nd</sup> and 3rd levels continue
- Storefront Frames and Glass at WPA
- Binder install at Bus loop
- Exterior Framing and Sheathing at the YMCA
- MEP starting at YMCA
- COA inspections – delays occurring due to COVID-19 action

## **PAYMENT STATUS:**

- Gmp#1 \$3,703,488.00
  - Paid to date amount \$2,339,044.78
- GMP#2 \$27,034,273.00
  - Paid to date amount \$11,205,022.40
- GMP#3 \$5,877,688.00
  - Paid to date amount \$485,978.71
- GMP#4 \$1,974,712.00
  - Paid to date amount \$0.00

## **WEATHER:**

- Total of 3/4" of rain for the week

## **SCHEDULED DATE OF SUBSTANTIAL COMPLETION**

- WPA – November 4, 2020
- YMCA-ELC - December 3, 2020

## **PREPARED BY:**

- Matt Dauber, Carroll Daniel Construction Co.

