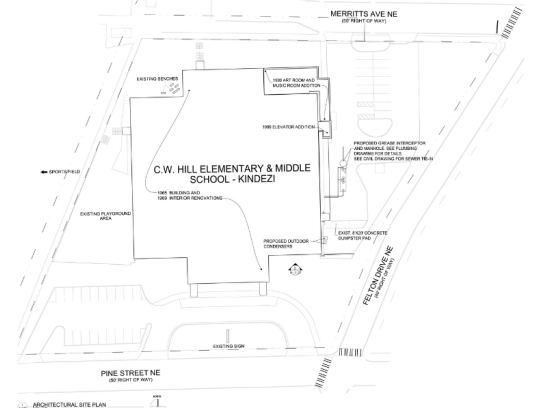


Trivia Question of the Week (Answer at the bottom): Building structures by bending, cutting, and assembling metal is called:

Project: CW Hill Elementary and Middle School Week Ending: December 20, 2024

THIS WEEK:

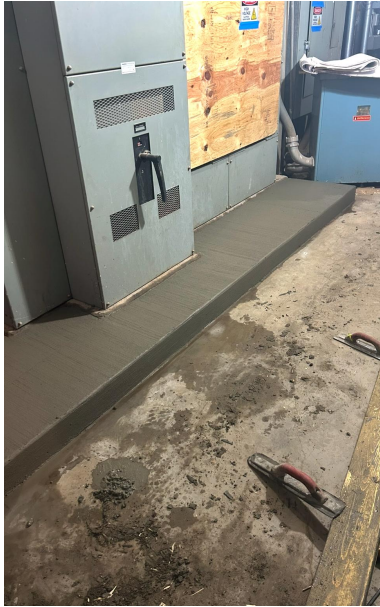
- Continued drywall installation level 2
- Continued waste and vent rough-in walls in the kitchen on level 1
- Continued plumbing rough-in at the kitchen
- Continued electrical rough-in overhead level 1, level 2 and in the kitchen
- Continued rough-in for electrical lighting
- Continued setting door frames for drywalls on level 2
- Started setting door frames for masonry on level 2
- Continued framing restroom ceilings on level 2
- Continued VRF line sets in the kitchen
- Kitchen hood delivered 12/20/2024
- Started fire alarm rough-in
- Started low voltage rough-in



Setting door frames for masonry on level 2.



Setting door frames in classrooms on level 2.



Concrete pads installed for electrical units on level 2.



Concrete pads installed for mechanical units outside.

NEXT WEEK – December 23rd - December 27th

- Continue drywall installation level 2
- Continue plumbing rough-in at the kitchen
- Continue electrical rough-in overhead level 1, level 2 and in the kitchen
- Continue framing restroom ceilings on level 2
- Continue VRF line sets in the kitchen
- Continue setting door frames on level 2
- Start hanging drywall level 1
- Continue waste and vent rough-in walls in the kitchen on level 1
- Continue rough-in for electrical lighting
- Continue setting door frames for drywalls on level 2
- Continue setting door frames for masonry on level 2
- Continue fire alarm rough-in
- Continue low voltage rough-in

Final Completion

- June 30, 2025

PREPARED BY:

Orisamola Richardson, Carroll Daniel Construction Co.

*Answer to the Trivia Question of the Week: **Fabrication***