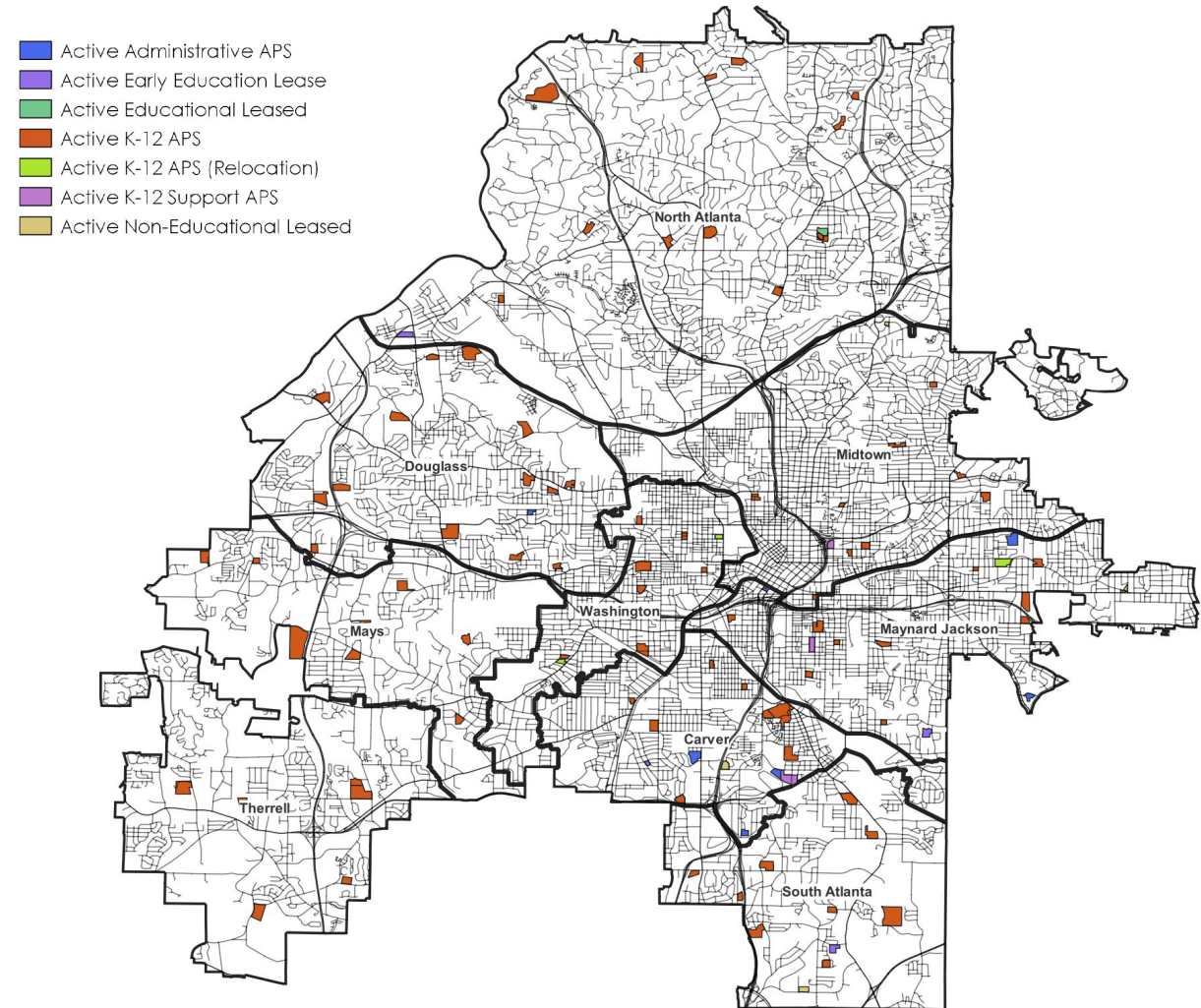


All Properties Actively Used by APS

APS has **105** (of 152) properties which are currently in-use:

Active Administrative APS	9
Active K-12 APS	85
Active K-12 APS (Relocation)	5
Active K-12 Support APS	4
Active Non-Educational APS	1
Active Non-Educational Leased	1
105 Active / In-Use Properties	



All properties actively used by APS (1 of 4)

Cluster	Site Name	Category
Carver	Campbell Elementary Facility	Active Administrative APS
Carver	Claire Drive Transportation	Active Administrative APS
Carver	Former Brewer Elementary	Active Administrative APS
Carver	Metropolitan Transportation Facility	Active Administrative APS
Carver	Atlanta College & Career Academy (ACCA) Facility	Active K-12 APS
Carver	Carver High Facility	Active K-12 APS
Carver	Finch Elementary Facility	Active K-12 APS
Carver	Gideons Elementary Facility	Active K-12 APS
Carver	Perkerson Elementary Facility	Active K-12 APS
Carver	Price Middle Facility	Active K-12 APS
Carver	Slater Elementary Facility	Active K-12 APS
Carver	Sylvan Hills Middle Facility	Active K-12 APS
Carver	Thomasville Heights Elementary Facility	Active K-12 APS (Relocation)
Carver	Lakewood Stadium Facility	Active K-12 Support APS
Douglass	White Elementary Facility (vacant)	Active Administrative APS
Douglass	Atlanta Virtual Academy at Grove Park Facility	Active K-12 APS
Douglass	BEST/CSKYLA Facility	Active K-12 APS
Douglass	Boyd Elementary Facility	Active K-12 APS
Douglass	Douglass 9th Grade Academy at Margaret Fain Campus	Active K-12 APS
Douglass	Douglass High Facility	Active K-12 APS
Douglass	F. L. Stanton Elementary Facility	Active K-12 APS
Douglass	Harper-Archer Elementary Facility	Active K-12 APS
Douglass	John Lewis Invictus Academy Facility	Active K-12 APS
Douglass	KIPP Collegiate at Turner Middle Facility	Active K-12 APS
Douglass	KIPP Soul Primary School & Academy	Active K-12 APS
Douglass	Scott Elementary Facility	Active K-12 APS
Douglass	Usher-Collier Elementary Facility	Active K-12 APS

All properties actively used by APS (2 of 4)

Cluster	Site Name	Category
Douglass	Westside Atlanta Charter at Archer High Facility	Active K-12 APS
Douglass	Woodson Park Academy	Active K-12 APS
Douglass	Hollowell at Maynard (Transportation)	Active Non-Educational APS
Maynard Jack	Center for Learning and Leadership Facility	Active Administrative APS
Maynard Jack	Peterson (Adult Ed) Facility	Active Administrative APS
Maynard Jack	Valerie Dial Thomas Facilities Center Facility	Active Administrative APS
Maynard Jack	ANCS Elementary at Slaton ES Facility	Active K-12 APS
Maynard Jack	Barack and Michelle Obama Academy Facility	Active K-12 APS
Maynard Jack	Benteen Elementary Facility	Active K-12 APS
Maynard Jack	Burgess-Peterson Elementary Facility	Active K-12 APS
Maynard Jack	Dunbar Elementary Facility	Active K-12 APS
Maynard Jack	King Middle Facility	Active K-12 APS
Maynard Jack	Maynard Jackson High Facility	Active K-12 APS
Maynard Jack	Parkside Elementary Facility	Active K-12 APS
Maynard Jack	Phoenix Academy at East Atlanta Campus Facility	Active K-12 APS
Maynard Jack	Toomer Elementary Facility	Active K-12 APS
Maynard Jack	Toomer Pre-K at Whitefoord Elementary Facility	Active K-12 APS
Maynard Jack	East Lake Elementary Facility	Active K-12 APS (Relocation)
Maynard Jack	Former Coan Middle Facility	Active K-12 APS (Relocation)
Maynard Jack	Cheney Stadium	Active K-12 Support APS
Mays	Beecher Hills Elementary Facility	Active K-12 APS
Mays	Cascade Elementary Facility	Active K-12 APS
Mays	Kindezi West at Adamsville ES Facility	Active K-12 APS
Mays	Mays High Facility	Active K-12 APS
Mays	Miles Elementary Facility	Active K-12 APS
Mays	Peyton Forest Elementary Campus	Active K-12 APS

All properties actively used by APS (3 of 4)

Cluster	Site Name	Category
South Atlanta	Dobbs Elementary Facility	Active K-12 APS
South Atlanta	Hank Aaron Academy Facility	Active K-12 APS
South Atlanta	Heritage Academy Facility	Active K-12 APS
South Atlanta	Humphries Elementary Facility	Active K-12 APS
South Atlanta	Hutchinson Elementary Facility	Active K-12 APS
South Atlanta	KIPP Vision at Tull Waters Elementary Facility	Active K-12 APS
South Atlanta	Long Middle Facility	Active K-12 APS
South Atlanta	South Atlanta High Facility	Active K-12 APS
Therrell	Bunche Middle Facility	Active K-12 APS
Therrell	Continental Colony Elementary Facility	Active K-12 APS
Therrell	Deerwood Academy Facility	Active K-12 APS
Therrell	Fickett Elementary Facility	Active K-12 APS
Therrell	Kimberly Elementary Facility	Active K-12 APS
Therrell	Therrell High Facility	Active K-12 APS
Washington	Instructional Service Center @Rusk Elementary Facility	Active Administrative APS
Washington	H.J. Russell West End Academy Facility	Active K-12 APS
Washington	Hollis Academy Facility	Active K-12 APS
Washington	KIPP WAYS at Herndon ES Facility	Active K-12 APS
Washington	M.A. Jones Elementary Facility	Active K-12 APS
Washington	North Metro GNETS at Oglethorpe ES Facility	Active K-12 APS
Washington	Tuskegee Airmen Facility	Active K-12 APS
Washington	Washington High Facility	Active K-12 APS
Washington	Bethune Elementary Facility	Active K-12 APS (Relocation)
Washington	Connally Elementary Facility	Active K-12 APS (Relocation)

All properties actively used by APS (4 of 4)

Cluster	Site Name	Category
Mays	West Manor Elementary Facility	Active K-12 APS
Mays	Young Middle Facility	Active K-12 APS
Midtown	Centennial Academy Facility	Active K-12 APS
Midtown	David T. Howard MS Facility	Active K-12 APS
Midtown	Hope-Hill Elementary Facility	Active K-12 APS
Midtown	Inman Elementary Facility	Active K-12 APS
Midtown	Kindezi O4W at C.W. Hill ES Facility	Active K-12 APS
Midtown	Lin Elementary Facility	Active K-12 APS
Midtown	Midtown High Facility	Active K-12 APS
Midtown	Morningside Elementary Facility	Active K-12 APS
Midtown	Springdale Park Elementary Facility	Active K-12 APS
Midtown	Wesley International Academy at Cook ES Facility	Active K-12 APS
Midtown	Henderson Stadium Facility	Active K-12 Support APS
Midtown	Walden Athletic Complex	Active K-12 Support APS
Midtown	WABE Broadcast Facility	Active Non-Educational Lease
North Atlanta	Bolton Academy Facility	Active K-12 APS
North Atlanta	Brandon Elementary Facility	Active K-12 APS
North Atlanta	Brandon Primary Facility	Active K-12 APS
North Atlanta	Garden Hills Elementary Facility	Active K-12 APS
North Atlanta	Jackson Elementary Facility	Active K-12 APS
North Atlanta	Jackson Primary Center Facility	Active K-12 APS
North Atlanta	North Atlanta High School Facility	Active K-12 APS
North Atlanta	Rivers Elementary Facility	Active K-12 APS
North Atlanta	Smith Elementary Facility	Active K-12 APS
North Atlanta	Smith Primary Center Facility	Active K-12 APS
North Atlanta	Sutton 6th Grade Campus Facility	Active K-12 APS
North Atlanta	Sutton Middle 7-8th Grade Facility	Active K-12 APS
South Atlanta	Cleveland Elementary Facility	Active K-12 APS

All Potentially Excess Properties (1 of 2)

CATEGORY	EXCESS PROPERTIES	ADDRESS	CLUSTER	Area	Current Use
Active Early Education Leased	ELPM at Guice Elementary Facility	1485 Woodland Ave SE	Maynard Jackson	9.9	Leased: Easterseals Child Development (Expires 4/2032)
Active Early Education Leased	ELPM at Minnie Howell Elementary Facility	399 Macedonia Rd SE	South Atlanta	9.3	Leased: Easterseals / Premier Academy (Expires 5/2032)
Active Early Education Leased	ELPM at Sylvan Hills Elementary Facility	1757 Melrose Dr SW	Carver	2.5	Leased: Easterseals Child Development (Expires 6/2029)
Active Educational Leased	Atlanta International School at North Fulton High Facility	2890 N Fulton Dr NE	North Atlanta	9.3	Leased: Atlanta International School (Expires 6/2051)
Active K-12 Support APS	Little White House Facility	2548 Peachtree Battle Ave NW	North Atlanta	0.2	School: After school programming
Active Non-Educational Leased	AFR Training Gilbert at Facility	407 Ashwood Ave, SW	Carver	7.5	Leased: Atlanta Fire Rescue
Active Non-Educational Leased	APD Training at Harper ES Facility	180 Southside Industrial Pkwy SE	South Atlanta	7.4	Leased: Atlanta Police Department
Inactive Reserve Building	Anderson Park Elementary Facility	2050 Tiger Flowers Dr NW	Douglass	10.9	Vacant
Inactive Reserve Building	Capitol View Elementary Facility	1442 Metropolitan Pkwy SW	Carver	4.2	Vacant/Film
Inactive Reserve Building	Carey Elementary Facility	2588 Etheridge Dr NW	Douglass	4.7	Vacant -
Inactive Reserve Building	Hubert Elementary Facility	0 Stovall Street SE (982 Memorial Dr)	Maynard Jackson	5.8	Vacant
Inactive Reserve Building	Lakewood Heights Elementary Facility	335 Sawtell Ave SE	South Atlanta	2.1	Vacant
Inactive Reserve Building	Marshall Middle Facility	1820 Mary Dell Dr SE	Maynard Jackson	14.8	Vacant/Film
Inactive Reserve Building	Pryor Street School Facility	200 Doane St SW	Maynard Jackson	4.8	Vacant
Inactive Reserve Building	Rosalie Wright Elementary Facility	360 Autumn Ln SW	Mays	1.9	Vacant -
Inactive Reserve Building	Towns Elementary Facility	760 Bolton Rd. NW	Douglass	8	Vacant -
Inactive Reserve Building	Venetian Hills Elementary Facility	1910 Venetian Dr SW	Washington	9.3	Vacant
Inactive Reserve Building	Warren Road Facility	20 Warren St NE	Maynard Jackson	0.7	Admin: Storage
Inactive Reserve Building	West Atlanta Elementary Facility	1335 Kimberly Road SW	Therrell	13.9	Vacant -
Inactive Reserve Building	Williams Elementary Facility	0 James Jackson Pkwy NW (about 1100)	Douglass	6.4	Vacant
Inactive Reserve Land	Bass Field	326 Moreland Ave / 1136 Austin Ave	Midtown	4.8	Recreational Field
Inactive Reserve Land	Boulder Park Land Site	0 Boulder Park Dr SW (about 4500)	Mays	10.1	Land Holding -

All Potentially Excess Properties (2 of 2)

CATEGORY	EXCESS PROPERTIES	ADDRESS	CLUSTER	Area	Current Use
Inactive Reserve Land	Fairburn Road Land Site	0 Fairburn Road SW (about 301)	Mays	9.6	Land Holding
Inactive Reserve Land	Fairburn Road-Mays Site	0 Fairburn Road SW (about 900)	Mays	54	Land Holding -
Inactive Reserve Land	Former Collier Heights Elementary Site	338 Collier Drive NW	Douglass	6.4	Land Holding
Inactive Reserve Land	Former Cooper Street School Site	405 Cooper St SW	Maynard Jackson	2.2	Land Holding
Inactive Reserve Land	Former Dobbs Elementary Site	1965 Lewis Road SE	South Atlanta	10.2	Land Holding
Inactive Reserve Land	Former Finch Elementary Site	0 Ajax Drive NW (about 2198)	Douglass	13.6	Land Holding - Title Dispute -
Inactive Reserve Land	Former McGill Elementary Site	750 Martin St SE	Maynard Jackson	4.9	Recreational Field
Inactive Reserve Land	Former Peeples Street School Site	0 Peeples St SW (about 575)	Washington	6.2	Vacant
Inactive Reserve Land	Former Pitts Elementary Site	2210 Perry Blvd NW	Douglass	9	Land Holding
Inactive Reserve Land	Former Wesley Avenue School Site	187 Wesley Avenue NE	Maynard Jackson	4.4	Community park - Hold long term
Inactive Reserve Land	Forrest Canyon Land Site	0 Hendon Rd SE (about 1100)	South Atlanta	8	Land Holding
Inactive Reserve Land	Honor Farm Land Site	0 Thomasville Blvd SE (about 500)	South Atlanta	12.1	Land Holding
Inactive Reserve Land	Inman Field of Dreams	0 Virginia Avenue NE (SW corner of Ponce Place)	Midtown	1.4	Recreational Field
Inactive Reserve Land	LeConte Hwy Land Site	0 Bakers Ferry Rd SW	Mays	23.2	Land Holding -
Inactive Reserve Land	Melvin Drive Land Site	3895 Melvin Drive SW	Therrell	39.9	Land Holding
Inactive Reserve Land	Simpson Road Property	0 Joseph E Boone Blvd (SE corner of Boone & Sewanee)	Douglass	6.1	Wooded excess acreage
Inactive Reserve Land	Wooded Acreage @ Bunche Middle	1925 Niskey Lake Rd SW	Therrell	16.8	Wooded excess acreage
Inactive Reserve Land	Wooded Acreage @ Peyton Forest Elementary	0 Harlan Road SW (about 270)	Mays	12	Wooded excess acreage
Inactive Reserve Land	Wooded Land/Field Road	0 Watts Road NW	Douglass	19.1	Wooded excess acreage
Undersized Land Adjacent	Forrest Circle lot at South Atlanta High	0 Forrest Circle SE (about 895)	South Atlanta	0.4	Land Holding
Undersized Land Adjacent	Martin Street Lot at Obama ES	0 Martin Street SE (about 935)	Maynard Jackson	0.1	Land Holding
Undersized Land Adjacent	Welch Street Lots at Gideons ES	884 Welch Street SW	Carver	0.3	Land Holding
Undersized Land Non-Adjacent	Manigault/Reynoldstown (COA Park?)	0 Manigault St SE (about 1000)	Maynard Jackson	0.2	COA Park
Undersized Land Non-Adjacent	Terry Street Lot Site	753 Terry St SE	Maynard Jackson	0.1	Land Holding

Summary of Consultant's Recommendations by Cluster

Four Criteria

Utilization

45% (Weighted Value)

Data Source: ARC 2050 population data compared to the active school capacity of each cluster

Risk Hazards

30% (Weighted Value)

Data Source: Proximity to Rail/Highway, Natural Gas, High Power Electrical lines as defined by GDoE

Property Size

15% (Weighted Value)

Data Source: Size of Property

Proximity

10% (Weighted Value)

Data Source: Proximity to other schools and other excess properties

Excess Property Weighted Criteria Matrix

	Cluster	Property Name	Utilization	Risk Hazard	Property Size/Area	Proximity to active school	Proximity to other Potentially Excess Property	Weighted Score
			45%	30%	15%	5%	5%	100%
1	Carver	Welch Street Lots	4	2	4	4	2	3.3
2	Carver	Capitol View Elementary Facility	4	3	2	2	2	3.2
3	Washington	Former Peeples Street School Site	4	3	1	4	2	3.15
4	Carver	ELPM at Sylvan Hills Elementary Facility	4	2	3	4	2	3.15
5	Douglass	Simpson Road Property	4	3	1	0	4	3.05
6	Douglass	Towns Elementary Facility	4	3	1	4	0	3.05
7	South Atlanta	Lakewood Heights Elementary Facility	4	2	3	4	0	3.05
8	Douglass	Former Pitts Elementary Site	4	2	1	4	4	2.95
9	South Atlanta	ELPM at Minnie Howell Elementary Facility	4	2	1	4	2	2.85
10	Douglass	Former Collier Heights Elementary Site	4	2	1	4	0	2.75
11	Douglass	Anderson Park Elementary Facility	4	2	0	2	4	2.7
12	South Atlanta	Former Dobbs Elementary Site	4	2	0	2	4	2.7
13	Carver	AFR Training at Gilbert ES Facility	4	2	1	2	0	2.65
14	Douglass	Carey Elementary Facility	4	1	2	2	2	2.6
15	South Atlanta	Honor Farm Land Site	4	2	0	0	4	2.6
16	South Atlanta	APD Training at Harper ES Facility	4	1	1	4	2	2.55

Higher Scores are more favorable for disposal

Consultant's Recommendation: Disposal of Properties with a weighted score of greater than 2.5

Excess Property Weighted Criteria Matrix

	Cluster	Property Name	Utilization	Risk Hazard	Property Size/Area	Proximity to active school	Proximity to other Potentially Excess Property	Weighted Score
			45%	30%	15%	5%	5%	100%
17	Douglass	Former Finch Elementary Site	4	1	0	4	4	2.5
18	South Atlanta	Forrest Circle lot at South Atlanta High	4	0	4	0	2	2.5
19	Douglass	Wooded Land/Field Road	4	2	0	0	2	2.5
20	Washington	Venetian Hills Elementary Facility	4	1	1	4	0	2.45
21	Jackson	Martin Street Lot	1	3	4	4	4	2.35
22	South Atlanta	Forrest Canyon Land Site	4	1	1	0	2	2.35
23	Douglass	Williams Elementary Facility	4	1	1	0	2	2.35
24	Jackson	Manigault/Reynoldstown	1	3	4	2	4	2.25
25	Jackson	Former Cooper Street School Site	1	3	3	4	2	2.1
26	Jackson	Terry Street Lot Site	1	2	4	4	4	2.05
27	North Atlanta	Little White House Facility	1	2	4	4	2	1.95
28	Jackson	Warren Road Facility	1	2	4	4	2	1.95
29	Jackson	Pryor Street School Facility	1	3	2	2	2	1.85
30	Jackson	Hubert Elementary Facility	1	3	1	2	4	1.8
31	Jackson	Former McGill Elementary Site	1	2	2	4	4	1.75
32	Jackson	ELPM at Guice Elementary Facility	1	3	1	4	0	1.7
33	Therrell	West Atlanta Elementary Facility	2	2	0	0	2	1.6
34	Jackson	Former Wesley Avenue School Site	1	2	2	2	2	1.55
35	Mays	Rosalie Wright Elementary Facility	0	3	3	2	2	1.55

Higher Scores are more favorable for disposal

Recommendation: Disposal of Properties with a weighted score of greater than 2.5

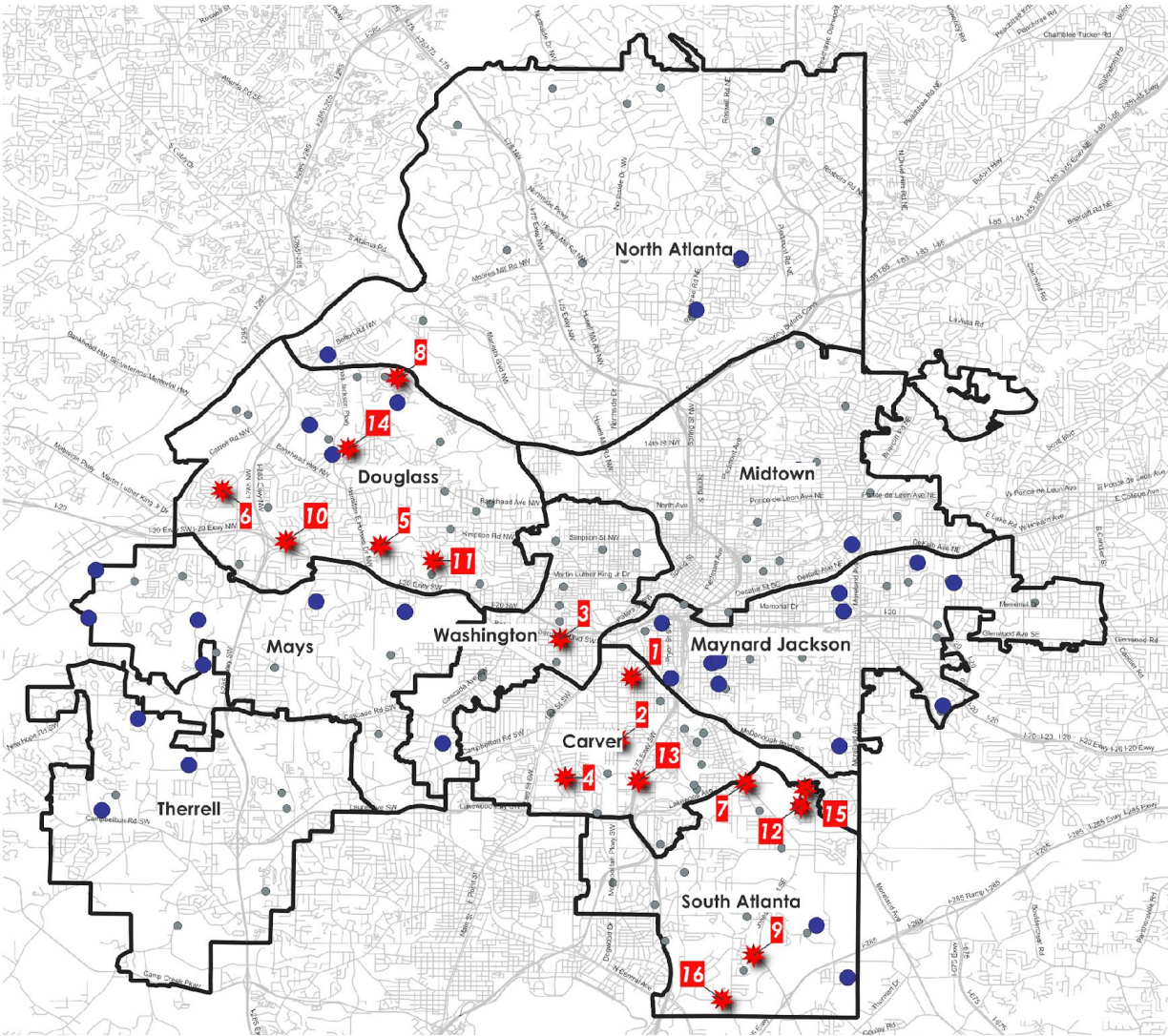
Excess Property Weighted Criteria Matrix

	Cluster	Property Name	Utilization	Risk Hazard	Property Size/Area	Proximity to active school	Proximity to other Potentially Excess Property	Weighted Score
			45%	30%	15%	5%	5%	100%
36	Midtown	Bass Field	0	3	2	4	2	1.5
37	North Atlanta	Atlanta International School at North Fulton High Facility	1	2	1	4	2	1.5
38	Therrell	Wooded Acreage @ Bunche Middle	2	2	0	0	0	1.5
39	Midtown	Inman Field of Dreams	0	2	4	4	0	1.4
40	North Atlanta	YMCA at Former Chattahoochee ES Facility	1	2	0	4	2	1.35
41	Therrell	Melvin Drive Land Site	2	1	0	0	2	1.3
42	Jackson	Marshall Middle Facility	1	2	0	2	0	1.15
43	Mays	Fairburn Road-Mays Site	0	2	0	0	4	0.8
44	Mays	Wooded Acreage @ Peyton Forest Elementary	0	2	0	4	0	0.8
45	Mays	LeConte Hwy Land Site	0	1	0	4	4	0.7
46	Mays	Fairburn Road Land Site	0	1	1	0	4	0.65
47	Mays	Boulder Park Land Site	0	1	0	2	4	0.6

Higher Scores are more favorable for disposal

Recommendation: Disposal of Properties with a weighted score of greater than 2.5

Summary of Consultant's Recommendations



16 Properties Recommended to Consider for Disposal

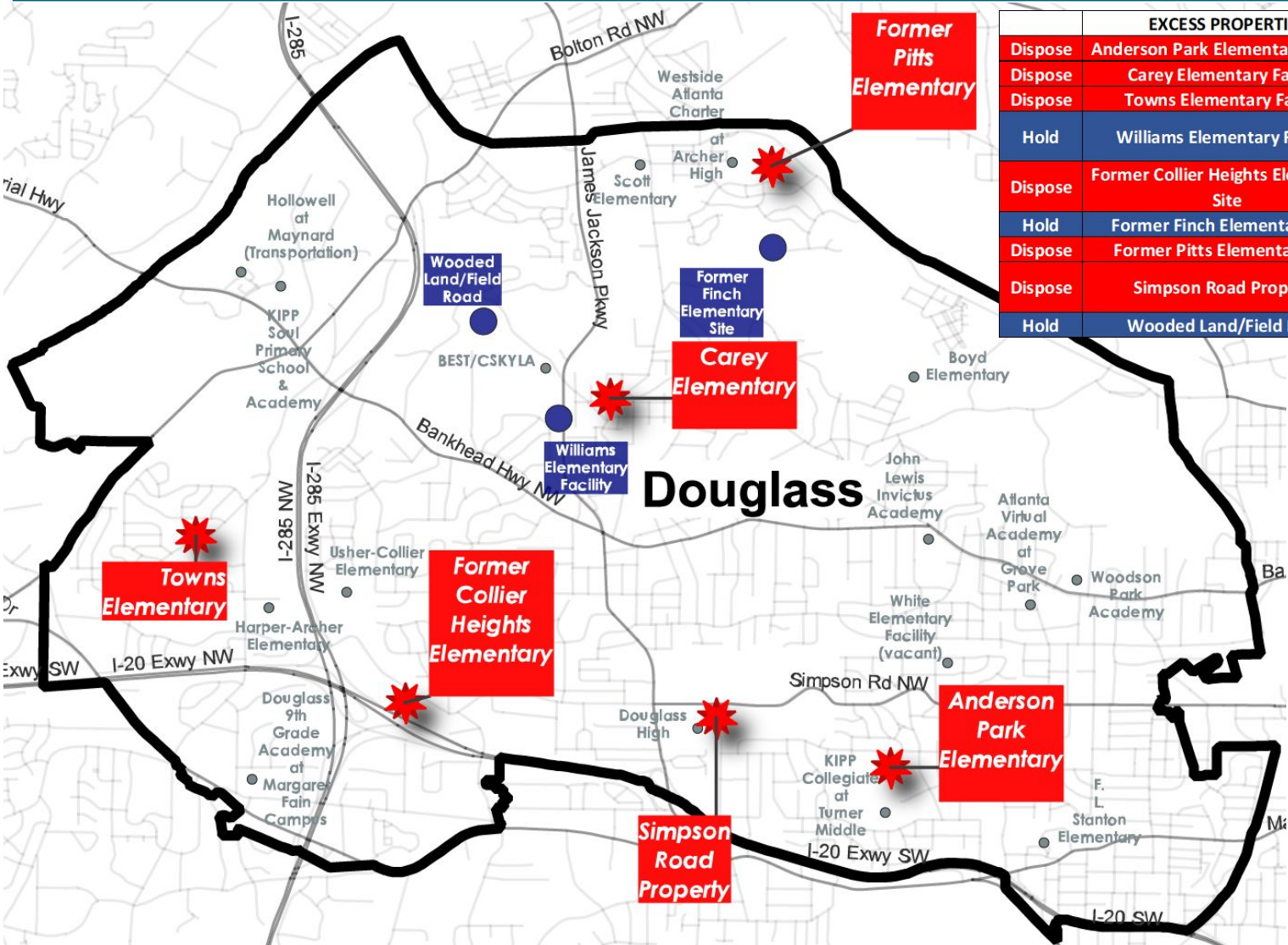
Label	Cluster	Property Name	Weighted Score
1	Carver	Welch Street Lots	3.3
2	Carver	Capitol View Elementary Facility	3.2
3	Washington	Former Peeples Street School Site	3.15
4	Carver	ELPM at Sylvan Hills Elementary Facility	3.15
5	Douglass	Simpson Road Property	3.05
6	Douglass	Towns Elementary Facility	3.05
7	South Atlanta	Lakewood Heights Elementary Facility	3.05
8	Douglass	Former Pitts Elementary Site	2.95
9	South Atlanta	ELPM at Minnie Howell Elementary Facility	2.85
10	Douglass	Former Collier Heights Elementary Site	2.75
11	Douglass	Anderson Park Elementary Facility	2.7
12	South Atlanta	Former Dobbs Elementary Site	2.7
13	Carver	AFR Training at Gilbert ES Facility	2.65
14	Douglass	Carey Elementary Facility	2.6
15	South Atlanta	Honor Farm Land Site	2.6
16	South Atlanta	APD Training at Harper ES Facility	2.55

Active Properties

Consider for Disposal

Hold

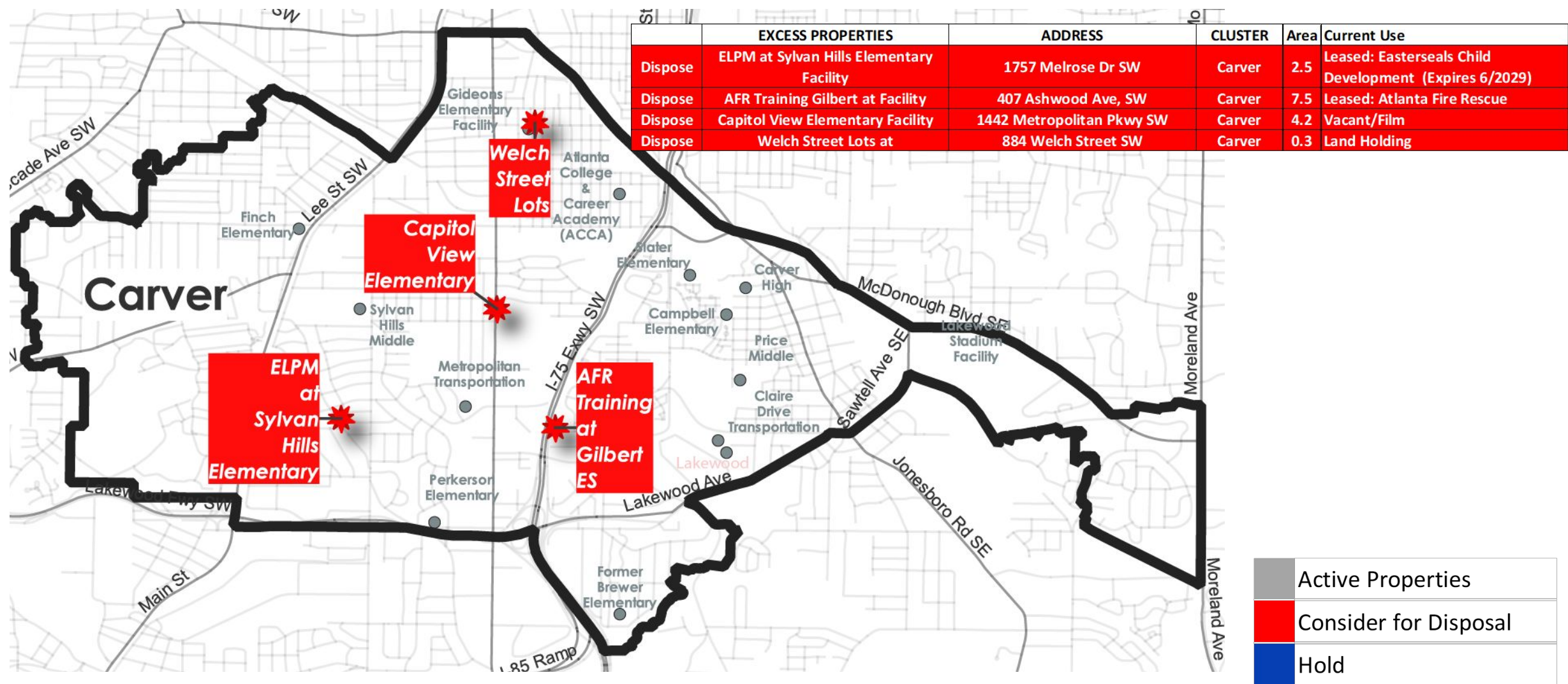
Douglass Cluster Recommendations



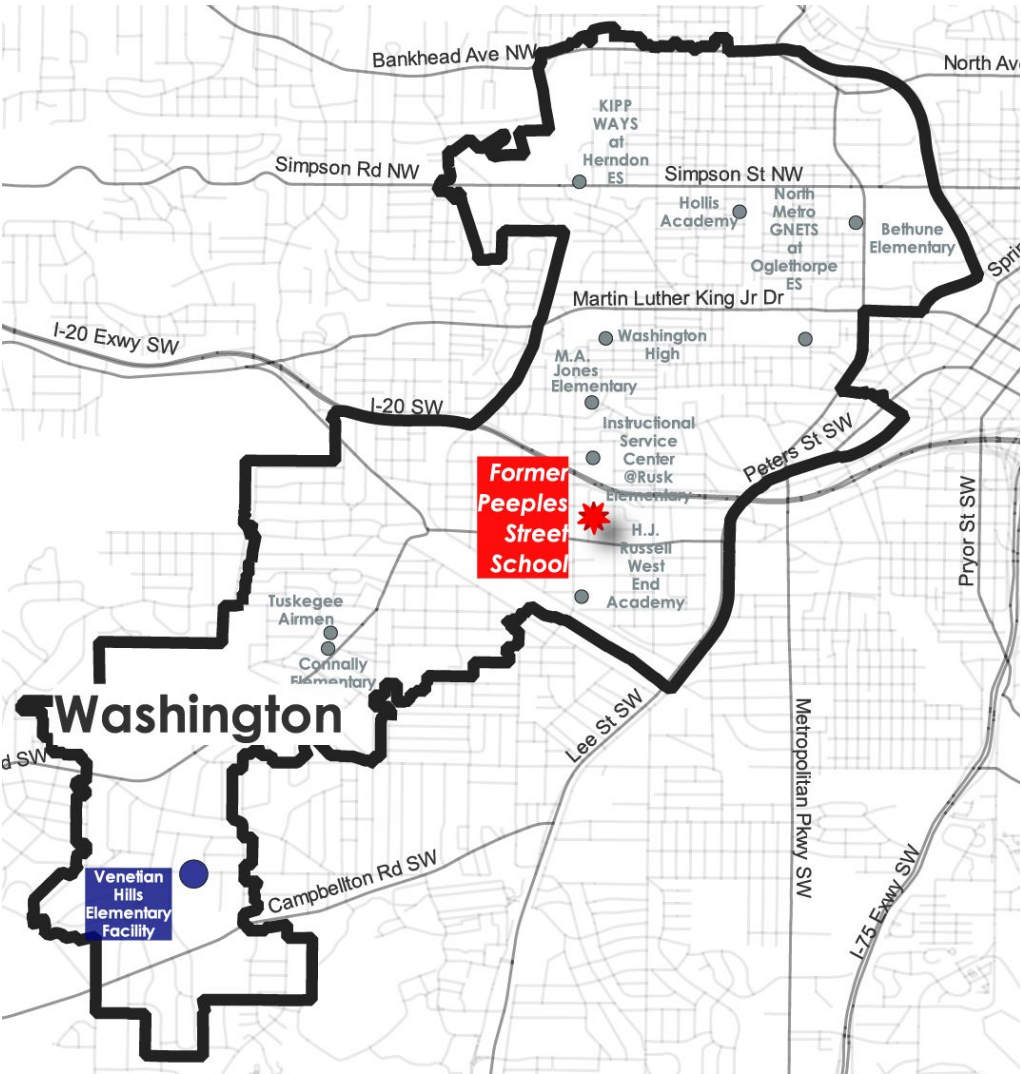
	EXCESS PROPERTIES	ADDRESS	CLUSTER	Area	Current Use
Dispose	Anderson Park Elementary Facility	2050 Tiger Flowers Dr NW	Douglass	10.9	Vacant
Dispose	Carey Elementary Facility	2588 Etheridge Dr NW	Douglass	4.7	Vacant -
Dispose	Towns Elementary Facility	760 Bolton Rd. NW	Douglass	8	Vacant -
Hold	Williams Elementary Facility	0 James Jackson Pkwy NW (about 1100)	Douglass	6.4	Vacant
Dispose	Former Collier Heights Elementary Site	338 Collier Drive NW	Douglass	6.4	Land Holding
Hold	Former Finch Elementary Site	0 Ajax Drive NW (about 2198)	Douglass	13.6	Land Holding - Title Dispute -
Dispose	Former Pitts Elementary Site	2210 Perry Blvd NW	Douglass	9	Land Holding
Dispose	Simpson Road Property	0 Joseph E Boone Blvd (SE corner of Boone & Sewanee)	Douglass	6.1	Wooded excess acreage
Hold	Wooded Land/Field Road	0 Watts Road NW	Douglass	19.1	Wooded excess acreage

	Active Properties
	Consider for Disposal
	Hold

Carver Cluster Recommendations



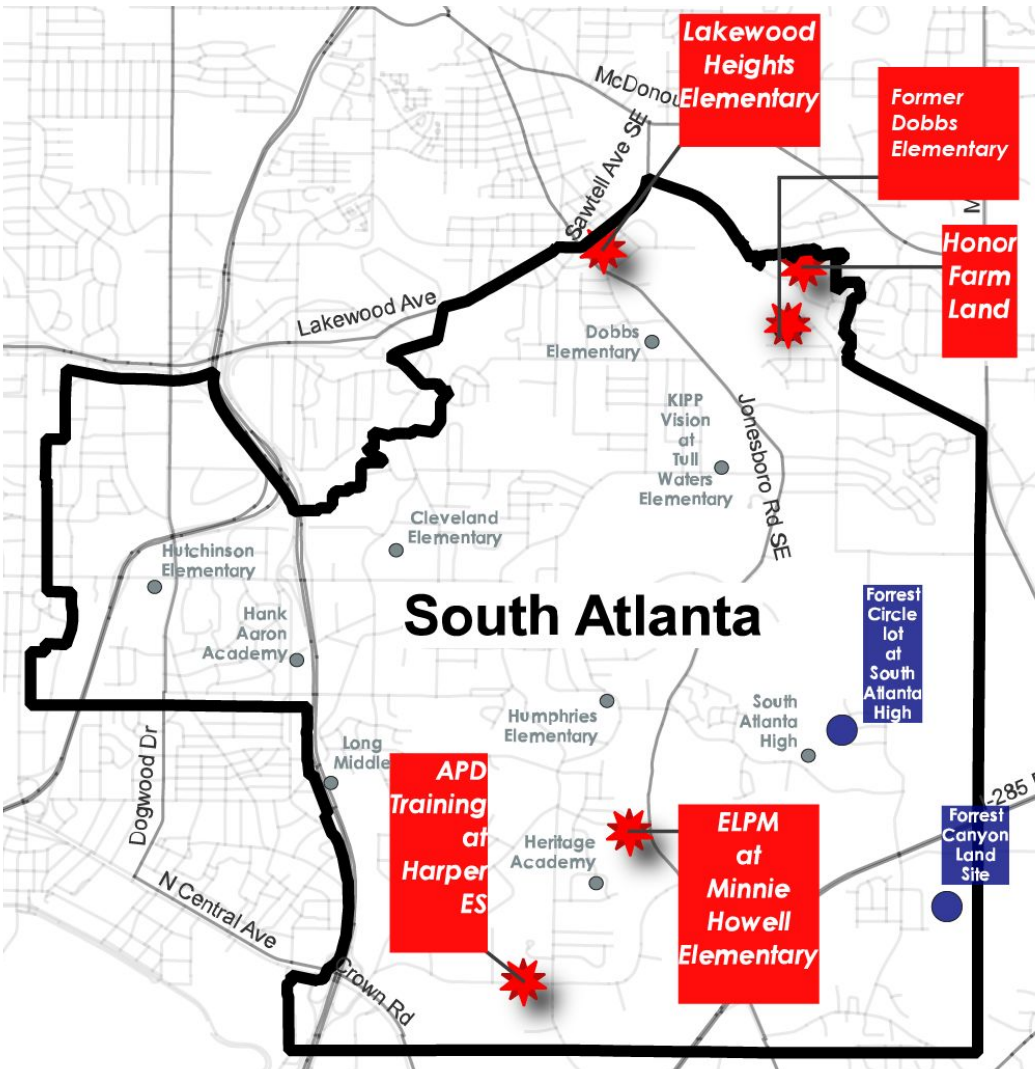
Washington Cluster Recommendations



	EXCESS PROPERTIES	ADDRESS	CLUSTER	Area	Current Use
Hold	Venetian Hills Elementary Facility	1910 Venetian Dr SW	Washington	9.3	Vacant
Dispose	Former Peeples Street School Site	0 Peeples St SW (about 575)	Washington	6.2	Vacant

	Active Properties
	Consider for Disposal
	Hold

South Atlanta Cluster Recommendations



	EXCESS PROPERTIES	ADDRESS	CLUSTER	Area	Current Use
Dispose	ELPM at Minnie Howell Elementary Facility	399 Macedonia Rd SE	South Atlanta	9.3	Leased: Easterseals / Premier Academy (Expires 5/2032)
Dispose	APD Training at Harper ES Facility	180 Southside Industrial Pkwy SE	South Atlanta	7.4	Leased: Atlanta Police Department
Dispose	Lakewood Heights Elementary Facility	335 Sawtell Ave SE	South Atlanta	2.1	Vacant
Dispose	Former Dobbs Elementary Site	1965 Lewis Road SE	South Atlanta	10.2	Land Holding
Hold	Forrest Canyon Land Site	0 Hendon Rd SE (about 1100)	South Atlanta	8	Land Holding
Dispose	Honor Farm Land Site	0 Thomasville Blvd SE (about 500)	South Atlanta	12.1	Land Holding
Hold	Forrest Circle lot at South Atlanta High	0 Forrest Circle SE (about 895)	South Atlanta	0.4	Land Holding

	Active Properties
	Excess: Dispose
	Excess: Hold