



# Weekly Construction Progress Report

**Grady High School**

**Week Ending: 09/04/2020**

**PARRISH**  
CONSTRUCTION GROUP

# Weekly Updates

## THIS WEEK

- Begin 2<sup>nd</sup> Floor Fireproofing
- Remove existing curtainwall system at Performance Gym Lobby
- Begin installing the new curtainwall system.
- Continue MEP overhead on ground floor of new addition.
- MEP overhead on Second floor of new addition.
- Installed Light Fixtures at Performance Gym Lobby.
- Continue CMU walls on ground floor of new addition.
- Pour 3<sup>rd</sup> Floor Shear Walls
- MEP overhead and rough-in in Performance Gym Lobby.
- Painted final coat of Performance Gym Lobby.

## NEXT WEEK – 9.07.2020 – 9.11.2020

- Start exterior brick work on SE Corner of new addition.
- Begin CMU walls on second floor of new addition.
- Continue MEP overhead and rough-in on First and Second floor of new addition.
- Continue Steel Erection for fourth floor.
- Complete installing lights and Mechanical Overhead work in Performance Gym Lobby
- Complete curtainwall system at Performance Gym Lobby.
- Begin forming column wraps Second Floor



# Budget & Schedule

## BUDGET

Construction Budget

- \$34,900,000.00

Budget Status

- \$ 12,522,967.87

## SCHEDULE

Completion Date

- July 29,2021

Schedule Status

- On Schedule



## ADDITIONAL INFO

- Scheduled Substantial Completion Date
  - July 29, 2021
- Completed By
  - Alex Johnson, PCG
- Copies To
  - Danny Gutlay, APS
  - Sandra Horton, APS
  - Katy Daugharty, CC
  - Bob Just, CC
  - John Rood, PCG
  - Darrell Bailey, PCG
  - Alex Johnson, PCG
  - Will Henry, PCG
  - Art Cofelice, PCG
  - Travis Disbro, PCG



# Photo Updates

## New Addition Progress



## Overall Site Progress



# Photo Updates

## New Addition Progress



Third Floor Slab Pour



# Photo Updates

Forming Third Floor Shear Walls



Second floor fireproofing



# Photo Updates

## Northwest Exterior CMU Walls

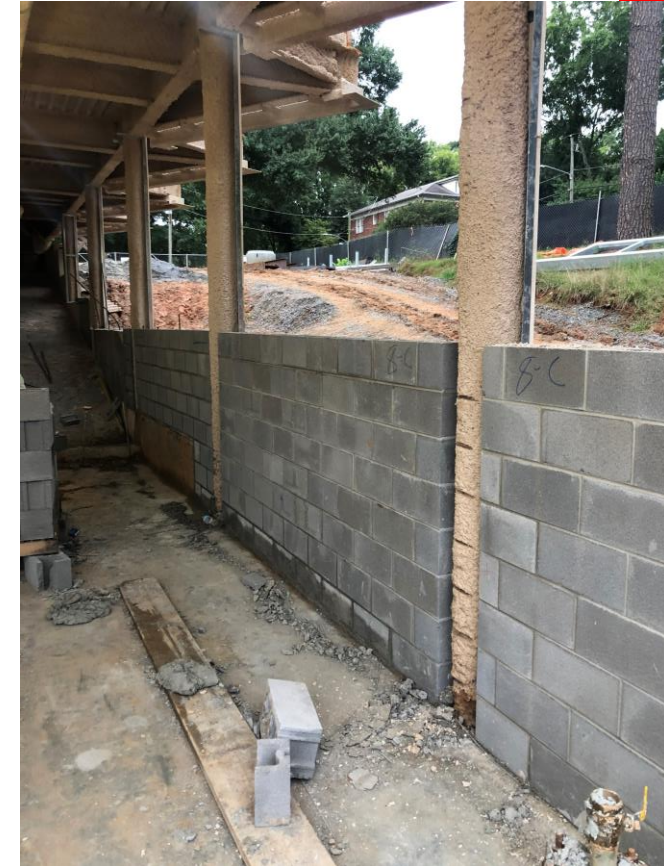


## Second Floor Plumbing Overhead



# Photo Updates

## First Floor Group Bathrooms



West Side Exterior CMU Walls

