

An aerial photograph of Grady High School campus. The school buildings are on the left, and a large football field with bleachers is on the right. In the background, the Atlanta skyline is visible under a clear sky.

# **Weekly Construction Progress Report**

**Grady High School**

**Week Ending: 09/18/2020**

**PARRISH**  
CONSTRUCTION GROUP

# Weekly Updates

## THIS WEEK

- Continue MEP overhead on ground floor of new addition.
- MEP overhead on Second floor of new addition.
- Begin CMU install on Second Floor of new addition
- Install 4<sup>th</sup> floor steel framing and decking.
- Install Bar Joist for 4<sup>th</sup> Floor Roof
- Poured column wraps Third Floor
- Continue CMU walls on second floor of new addition.
- Continue MEP overhead and rough-in on First and Second floor of new addition.
- Begin rollup door install in performance gym concession stand.
- Install casework and countertop at Concession Stand in Performance Gym.

## NEXT WEEK – 9.21.2020 – 9.25.2020

- Continue CMU walls on second floor of new addition.
- Continue MEP overhead and rough-in on First and Second floor of new addition.
- Continue Steel Erection for fourth floor.
- Pour fourth floor slab on deck of new addition.
- Complete Rollup Door in Performance Gym.
- Final Cleaning in Performance Gym
- Pour interior column wraps third floor of new addition.
- Backfill between C. Allen Building and the New Addition.
- Begin Fire Sprinkler first floor
- Roof Decking install
- 3<sup>rd</sup> floor spray fireproofing.



# Budget & Schedule

## BUDGET

Construction Budget

- \$34,900,000.00

Budget Status

- \$ 12,522,967.87

## SCHEDULE

Completion Date

- July 29,2021

Schedule Status

- On Schedule



## ADDITIONAL INFO

- Scheduled Substantial Completion Date
  - July 29, 2021
- Completed By
  - Will Henry, PCG
- Copies To
  - Danny Gutlay, APS
  - Sandra Horton, APS
  - Katy Daugharty, CC
  - Bob Just, CC
  - John Rood, PCG
  - Darrell Bailey, PCG
  - Alex Johnson, PCG
  - Will Henry, PCG
  - Art Cofelice, PCG
  - Travis Disbro, PCG





# Photo Updates

## New Addition Progress



Bar Joists installed at New Addition Roof



# Photo Updates

CMU Stair wall complete on 2<sup>nd</sup> floor of the  
New Addition



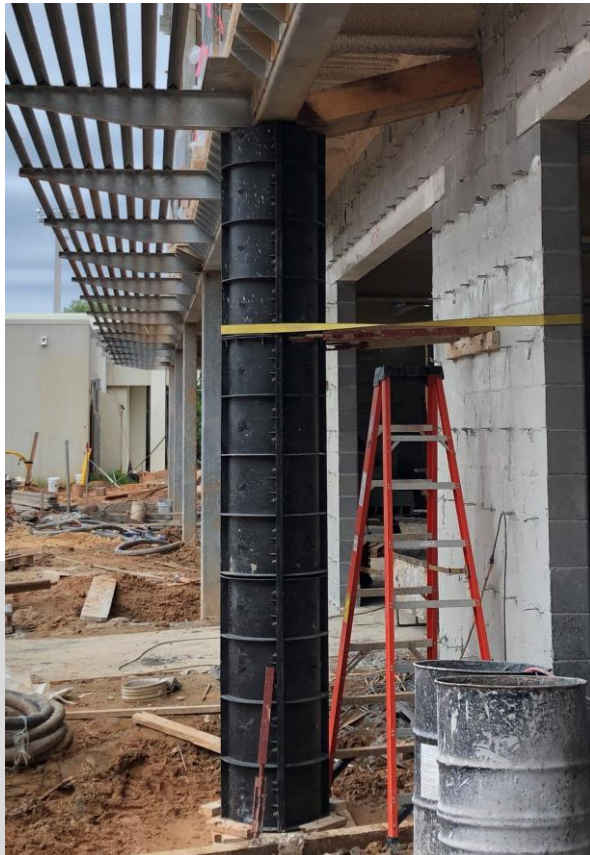
CMU wall progress on 2<sup>nd</sup> floor of the  
New Addition





# Photo Updates

## Exterior Concrete Columns Formed



1<sup>st</sup> Floor of New Addition CMU walls complete



# Photo Updates

Casework and Stainless Countertop  
installed at the Performance Gym  
Concession Stand



Casework and Stainless Countertop  
installed at the Performance Gym  
Concession Stand





# Photo Updates

New Porcelain Tile installed at  
Performance Gym Lobby



New Porcelain Tile installed at  
Performance Gym Lobby

