



ATLANTA  
PUBLIC  
SCHOOLS



**Grady Cluster  
Community Meeting  
February 8, 2017**

# Agenda

---

## Welcome & Introductions

## Current State of Grady Cluster

Summarize community agreement on common plan for managing space and enrollment in the Grady Cluster

Review projects, timelines and community engagement process

Review impact of recent annexations

Updates on cluster happenings

Feedback on Grady Cluster capacity planning



APS is

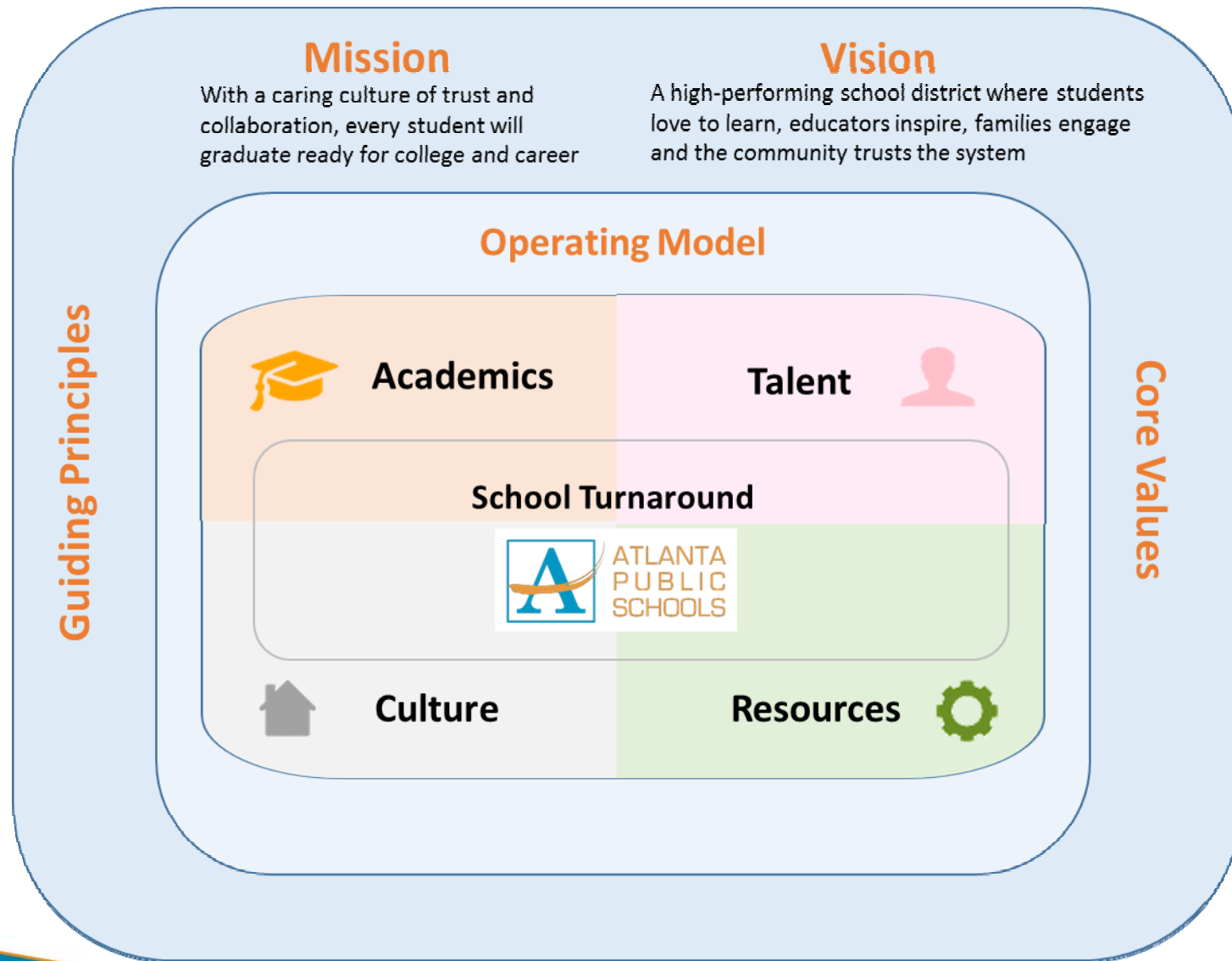
on a Journey of Transformation



# STATE *of the* DISTRICT

We are now in full-scale implementation of our transformational framework. While the organization is stronger structurally, academic performance is mixed.

# APS Transformation Framework

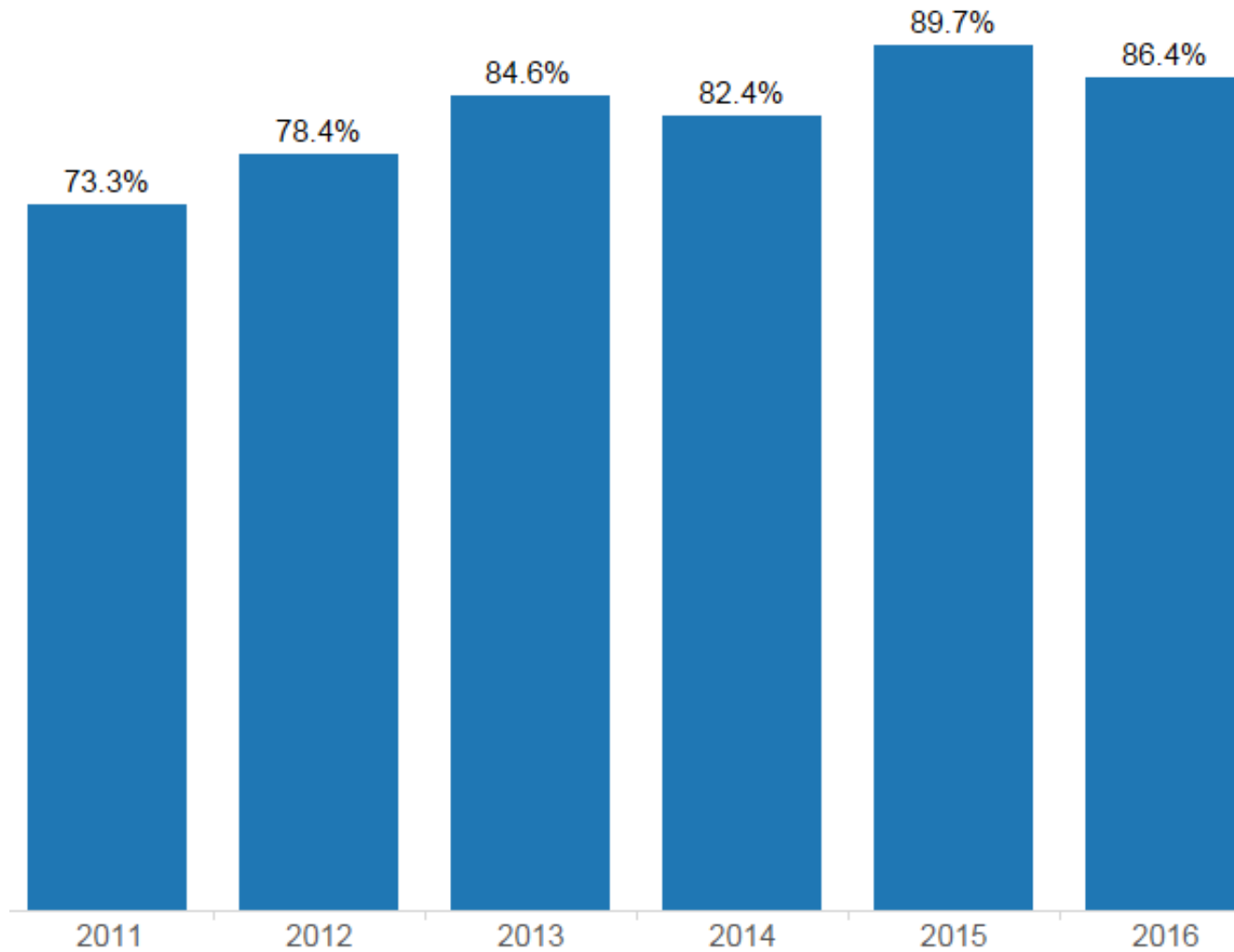


# Grady Cluster Performance - CCRPI

Grady Cluster CCRPI Scores					
		2014	2015	2016	Grand Total
ES	Hope-Hill	63.2	66.4	60.8	63.5
	Lin	91.5	93.2	98.9	94.5
	Morningside	94.1	98.2	96.5	96.3
	Springdale	91.4	94.5	95.6	93.8
MS	Inman	84.2	90.7	91.6	88.8
HS	Grady	71.1	70.5	72.4	71.3

# Grady HS Graduation Rate

---



# Grady Cluster Progress

## MISSION

The Grady Cluster will ensure every student graduates ready for college and career.

## VISION

Our vision is to be a high-performing cluster where educators inspire, families engage and students love to learn.



Extensive community engagement led to development of cluster plan and adoption of College and Career Prep Signature Theme



Two Five-Star Schools for Climate Ratings in Morningside (99.9) and Mary Lin (98.0) and two Four-Star Schools in SPARK (94.2) and Inman (83.5)



CCRPI success with most Grady schools performing among the highest in the district



None of the schools within the Grady Cluster appear on any potential state takeover lists



Morningside Elementary recognition as a National Blue Ribbon School



# Agenda

---

Welcome & Introductions

Current State of Grady Cluster

**Summarize community agreement on common plan for managing space and enrollment in the Grady Cluster**

Review projects, timelines and community engagement process

Review impact of recent annexations

Updates on cluster happenings

Feedback on Grady Cluster capacity planning

# APS & Community Agreement

---

As part of work in advance of SPLOST 2017 renewal, APS engaged Grady Cluster about possible solutions to manage space and enrollment in cluster. At Sept. 2015 meeting, community agreed upon several key solutions:

1

## Pass SPLOST

*\*SPLOST 2017 approved by voters in May 2016;  
therefore, revenue generation begins in July 2017*

2

Consider Inman Middle campus  
for additional elementary  
capacity in the cluster

3

Build new APS athletic practice  
fields on former Walden Middle  
School campus

4

Create new middle school at  
Howard building

5

Expand Grady campus and  
address recommendations from  
the Facility Condition  
Assessment

6

Try to accelerate construction  
process for Grady cluster  
capacity planning

# Agenda

---

Welcome & Introductions

Current State of Grady Cluster

Summarize community agreement on common plan for managing space and enrollment in the Grady Cluster

**Review projects, timelines and community engagement process**

Review impact of recent annexations

Updates on cluster happenings

Feedback on Grady Cluster capacity planning

# New APS Athletic Practice Fields

(Located on former Walden Middle School campus)



**Estimated  
Cost:**  
  
**\$8  
million**

## Pre-Design Activities

- ☐ Abatement/Demo Docs
- ☐ Phase 1 & 2 environmental studies

## Civil Engineer Selected

✓ Eberly & Associates

► **Construction  
Completed**  
Jun 2018

2017

2018

2018

**Field Design**

**Field Construction**

Design Start: Jan 2017

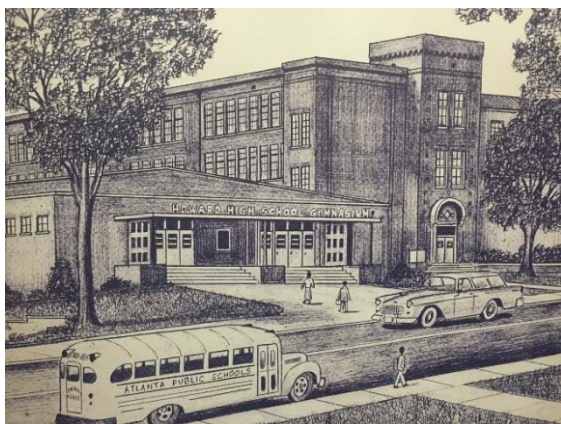
Design Completed: Jun 2017

Construction Start: Oct 2017

Construction Completed: Jun 2018

# New Middle School

## (Former David T. Howard High School)



### Pre-Design Activities

- ☐ Partial Abatement:  
Lead/Asbestos
- ☐ Furniture removal
- ☐ Phase 1 & 2 environmental  
studies

**Estimated  
Cost:**

**\$52  
million**



### Architect Selected

- ✓ Stevens & Wilkinson/Lord  
Aeck Sargent

### Capacity

- 1,450 FTE @ 25/1

### Cost

- 25 classroom addition
- Renovation

**Establishment of  
Design Committee**

Feb 2017

**Renovation Completed**

Jul 2020

2017

2018

2019

2020

**2020**

**Howard Design**

**Howard Renovation**

**Design Start: Mid-Mar 2017**

**Design Completed: Jun 2018**

**Construction Start: Aug 2018**

**Construction Completed: Jul 2020**



# Grady HS Campus Expansion



## Capacity

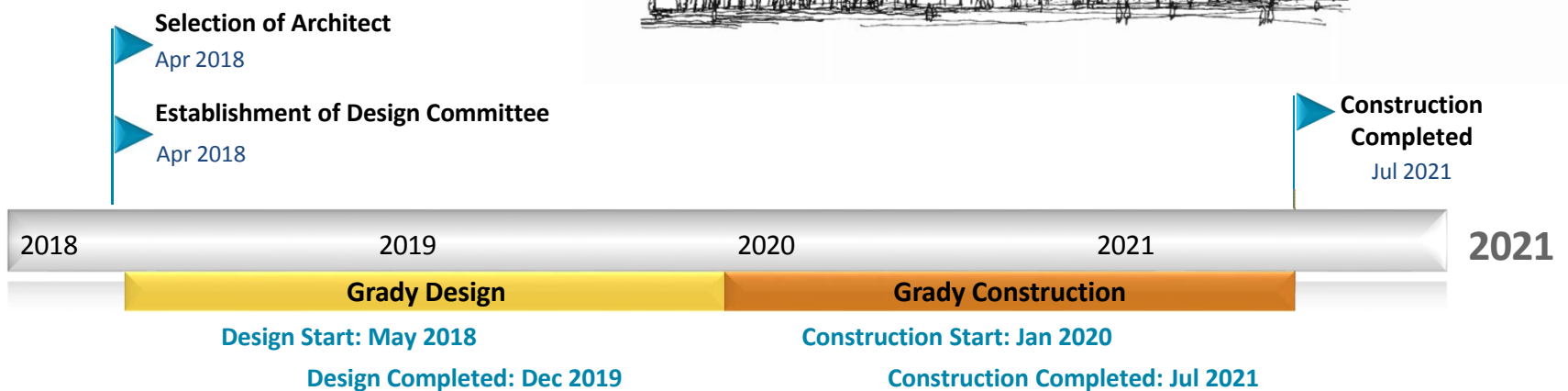
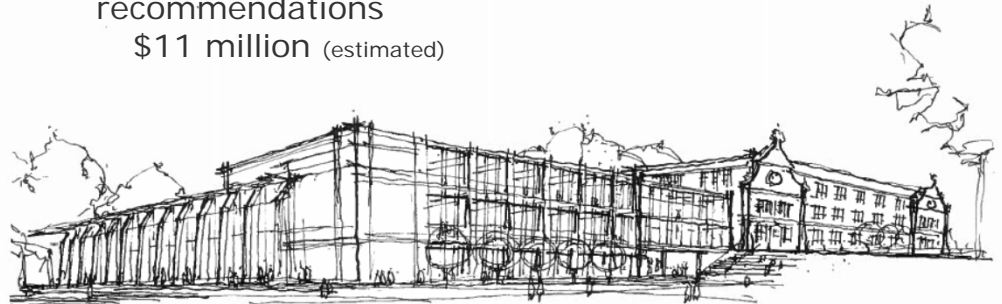
- 1,725 FTE @ 25/1

## Cost

- 18 classroom & 3 laboratory addition; new administrative suite  
\$22 million (estimated)
- Facility Condition Assessment recommendations  
\$11 million (estimated)

**Estimated  
Cost:**

**\$33  
million**

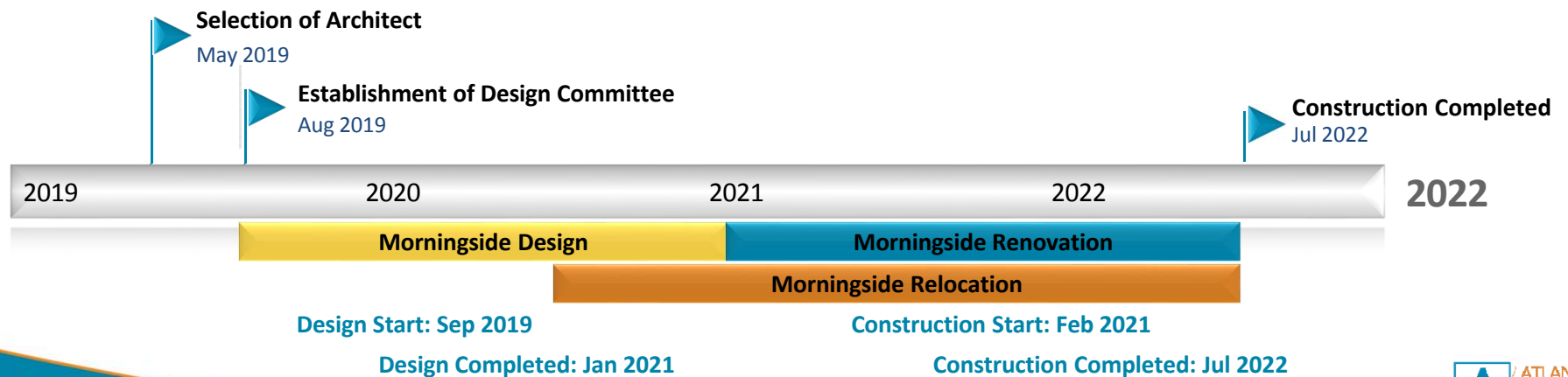


# Morningside Elementary Renovation



**Estimated  
Renovation  
Cost:**

**\$20  
million**



# Elementary School Capacity (Inman Campus)



**Estimated  
Cost:**

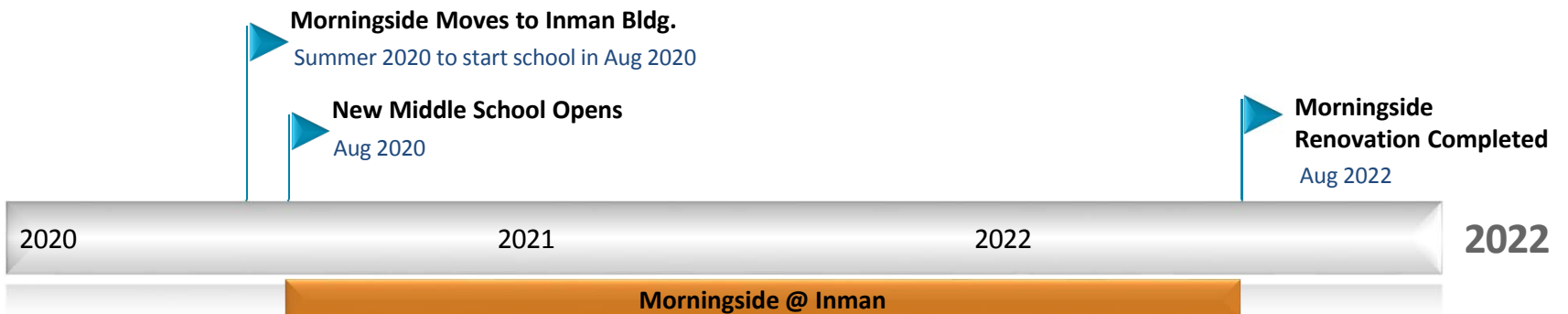
**Move Cost  
TBD**

## Cluster Option

- Consider Inman campus for additional elementary school capacity in the cluster

## Capacity

- 875 FTE @ 25/1



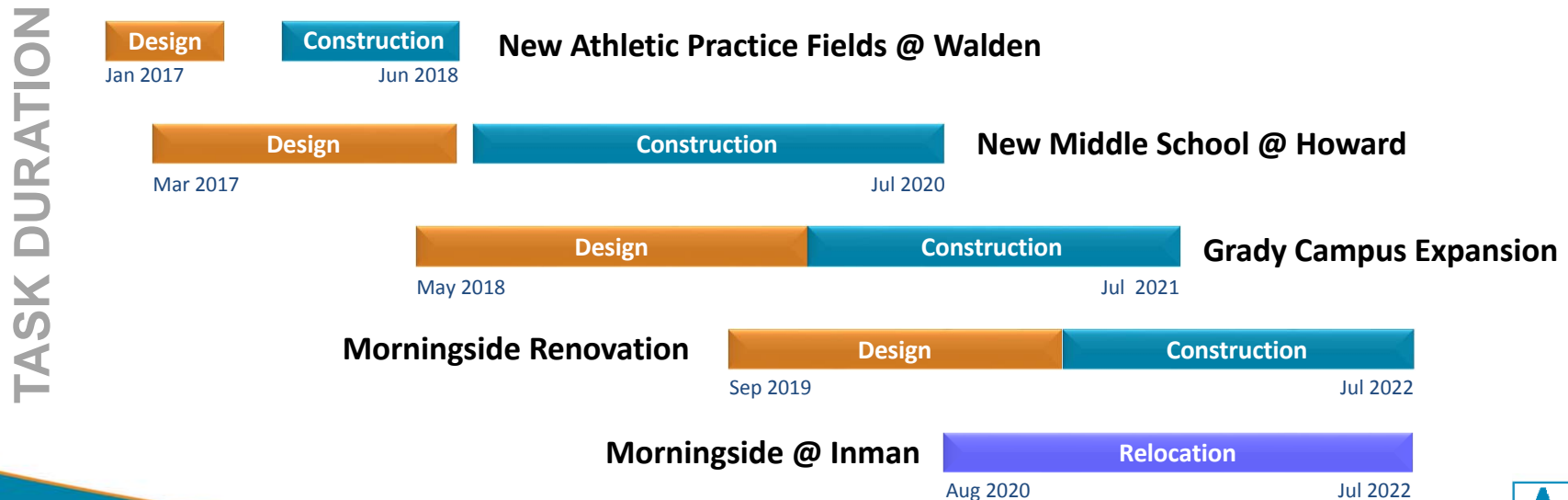
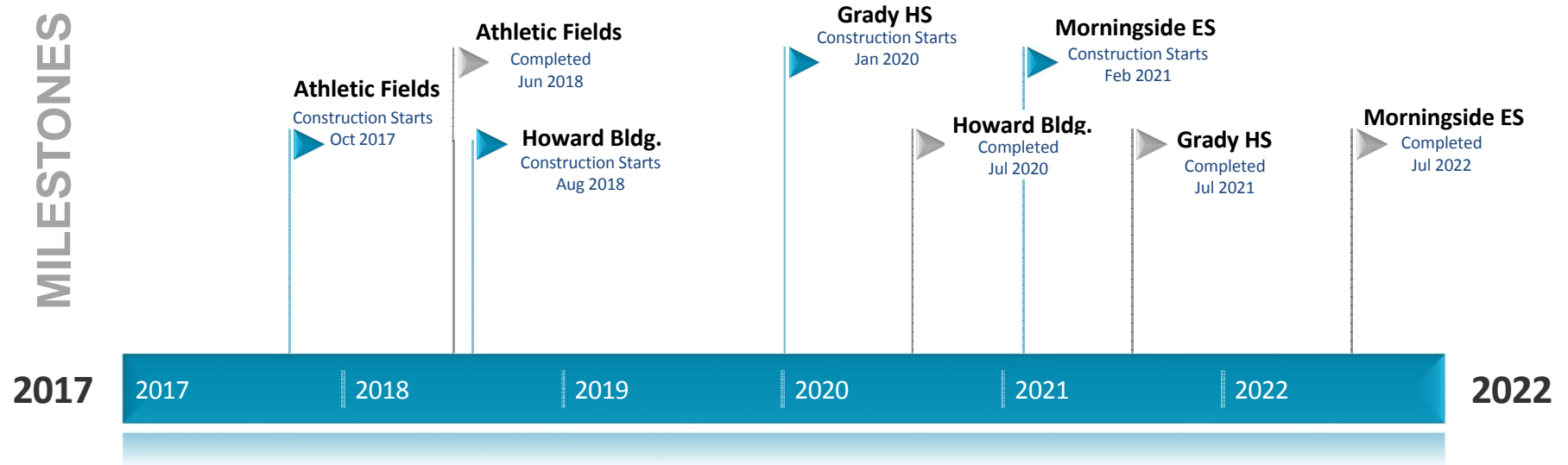
**Morningside Relocate to Inman: Aug 2020**

**Morningside Move Home: Jul 2022**



# Grady Cluster Renovation Proposed Timeline

Timelines are subject to change



# Design Committee for Building Construction Projects

**Design Committee** - Ensures communication and participation of the school community throughout the design and construction process. Committee includes:

- School Principal
- Architect
- Associate Superintendent (instruction)
- PTA Representative (2 max) \*
- Facilities representative

- Go Team Representative (2 max) \*
- School Board Representative
- School Faculty Representative\*
- Project Manager
- Community Member (NPU rep., etc.) \*

\*Principal will work with community and provide names

**The Design Committee will meet during the course of the project as outlined below:**

**Meeting #1** - Validate school needs and define architect's scope of work.

**Meeting #2** - Review schematic design options proposed by architect.

**Meeting #3** - Review construction documents at 50% completion and discuss the phased construction or relocation and construction process.

**Meeting #4** - Construction briefing to be held prior to the start of construction to inform Project Committee of what to expect during construction phase.



# Agenda

---

Welcome & Introductions

Current State of Grady Cluster

Summarize community agreement on common plan for managing space and enrollment in the Grady Cluster

Review projects, timelines and community engagement process

**Review impact of recent annexations**

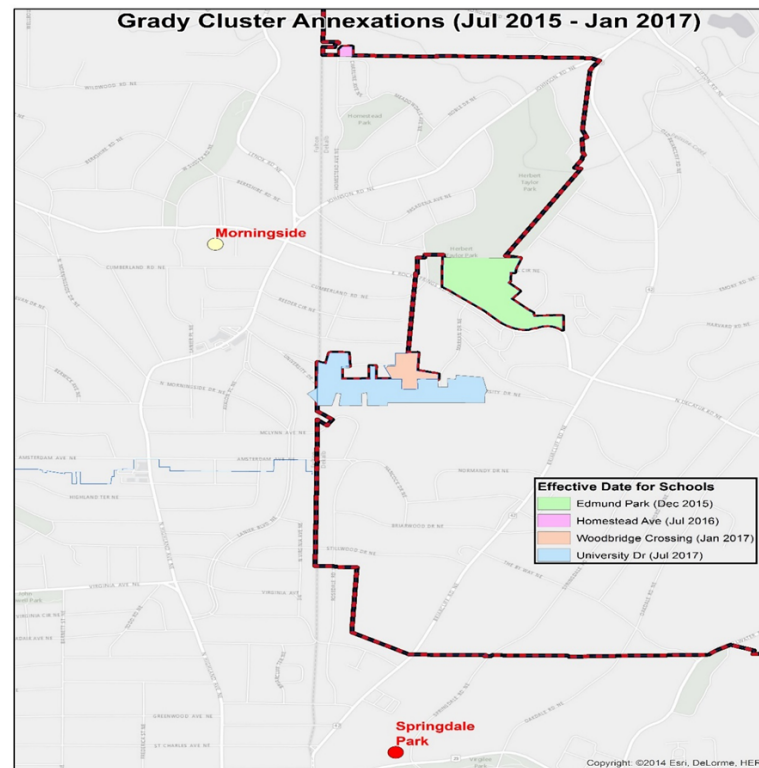
Updates on cluster happenings

Feedback on Grady Cluster capacity planning

# Recent Annexations in Grady Cluster

<u>Neighborhood or Street</u>	<u>Assigned School</u>	<u>Effective Dates for School Enrollment</u>	<u># of Students</u>
Edmund Park	MES, Inman, Grady	December 2015	1 Pre-K, 1KK
Homestead Avenue	MES, Inman, Grady	July 2016	0
Woodbridge Crossing	SPARK, Inman, Grady	January 2017	0
University Drive	SPARK, Inman, Grady	July 2017	1-2 <sup>nd</sup> , 1-5 <sup>th</sup> , 2-10 <sup>th</sup> *

Based on information from DeKalb County Schools, the Grady Cluster can expect about four more students for the 2017-2018 school year from recent annexations.



# Agenda

---

Welcome & Introductions

Current State of Grady Cluster

Summarize community agreement on common plan for managing space and enrollment in the Grady Cluster

Review projects, timelines and community engagement process

Review impact of recent annexations

## **Updates on cluster happenings**

Feedback on Grady Cluster capacity planning

# Updates on Cluster Happenings

---

## **Update of principal search process**

- The district is currently completing searches for principals at both Grady High School and Inman Middle School in time for the 2017-2018 school year.
- Four-Stage Process
- Status of Grady High Search
  - GO Team interviewed candidates today
  - Superintendent interviews on Wednesday, Feb. 15
  - Tentative recommendation to Board, March 6
- Status of Inman Search (contingent upon selection of Grady principal)

## **Grady requests**

Recent request to upgrade Sound/Lighting systems at Grady sooner

# PUMA Partnership



- The Clyde, named for and worn by Hall of Fame basketball star and David T. Howard High graduate Walt “Clyde” Frazier, was one of the first signature shoes for PUMA, the athletic shoe and apparel company. Shoe debuted in 1973.
- PUMA is launching a rebrand of the shoe as part of its Legacy Collection, which will include similarly branded apparel.
- The partnership will be developed to benefit students across the district.



# Agenda

---

Welcome & Introductions

Current State of Grady Cluster

Summarize community agreement on common plan for managing space and enrollment in the Grady Cluster

Review projects, timelines and community engagement process

Review impact of recent annexations

Updates on cluster happenings

**Feedback on Grady Cluster capacity planning**

# Feedback on Grady Cluster Capacity Planning

---

- Your feedback...
  - Morningside Kindergarten Annex ideas?
  - Timeline for renovations and construction, where possible?
  - Other?

# Contact Information

---

- General Questions

Email: [externalaffairs@atlanta.k12.ga.us](mailto:externalaffairs@atlanta.k12.ga.us)

- District 1 Board Member Leslie Grant

Email: [lgrant@atlanta.k12.ga.us](mailto:lgrant@atlanta.k12.ga.us)

- District 3 Board Member Matt Westmoreland

Email: [mwestmoreland@atlanta.k12.ga.us](mailto:mwestmoreland@atlanta.k12.ga.us)

- At-Large Seat 7 Board Member & Board Chair Courtney D. English

Email: [cenglish@atlanta.k12.ga.us](mailto:cenglish@atlanta.k12.ga.us)

- At-Large Seat 8 Board Member Cynthia Briscoe Brown

Email: [cbriscoe\\_brown@atlanta.k12.ga.us](mailto:cbriscoe_brown@atlanta.k12.ga.us)

- Superintendent Dr. Meria Carstarphen

Email: [suptoffice@atlanta.k12.ga.us](mailto:suptoffice@atlanta.k12.ga.us)



# District Community Engagement for Potential School Changes

## Jackson Cluster

## Mays Cluster

## Douglass Cluster

Dec. – Jan.	Jan. 12	Jan. 17	Jan. 17	Jan. 23-25	Jan. 23	Jan. 25
Meetings with Douglass Cluster Steering Committee & various neighborhood groups	Senior Cabinet leaders meet with Mays Cluster staff about school changes	Senior Cabinet leaders meet with Jackson Cluster staff about school changes	Lunch with Mays Community Leaders	Senior Cabinet leaders meet with Douglass Cluster staff about school changes	Jackson Cluster Community Meeting 6 p.m. Jackson HS	Douglass Cluster Community Meeting 6 p.m. Douglass HS

Jan. 26	Feb. 1	Feb. 6	Feb. 7	Feb. 9	Feb. 14.	Feb. 15
Mays Cluster Community Meeting 6 p.m. Mays HS	Mays Cluster Public Hearing 6 p.m. Adamsville ES	Atlanta Board of Education community meeting 6 p.m. CLL	Douglass Cluster Community Visit & Tour of KIPP WAYS 8 a.m. – 9 a.m.	Douglass Cluster Community Meeting 6 p.m. CSK	Douglass Cluster Community Visit & Tour of KIPP WAYS 8 a.m. – 9 a.m.	Jackson Cluster Public Hearing 6 p.m. Whitefoord ES

Feb. 22	Feb. 23	Feb. 27	Feb. 28	Mar. 1	Mar. 6
Douglass Cluster Public Hearing 6 p.m. BEST Academy	Mays Cluster Public Hearing 6 p.m. Miles ES	Douglass Cluster Public Hearing 6 p.m. CSK	Douglass Cluster Community Visit & Tour of KIPP WAYS 8 a.m. – 9 a.m.	Jackson Cluster Public Hearing 6 p.m. Benteen ES	Atlanta Board of Education community meeting 6 p.m. CLL