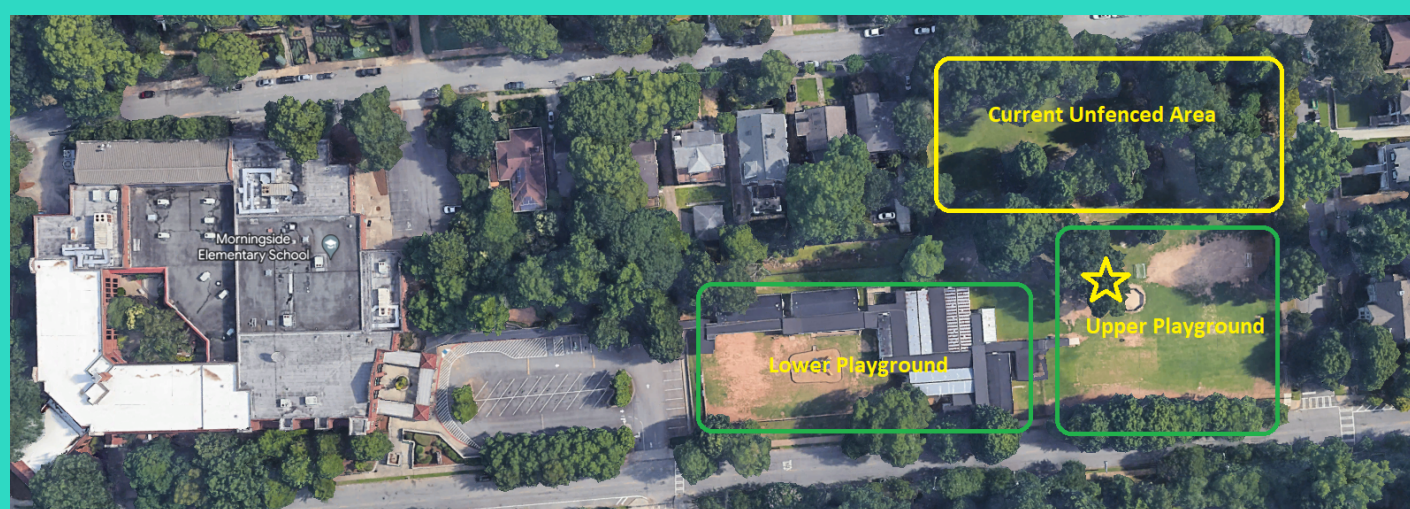




Playground Areas

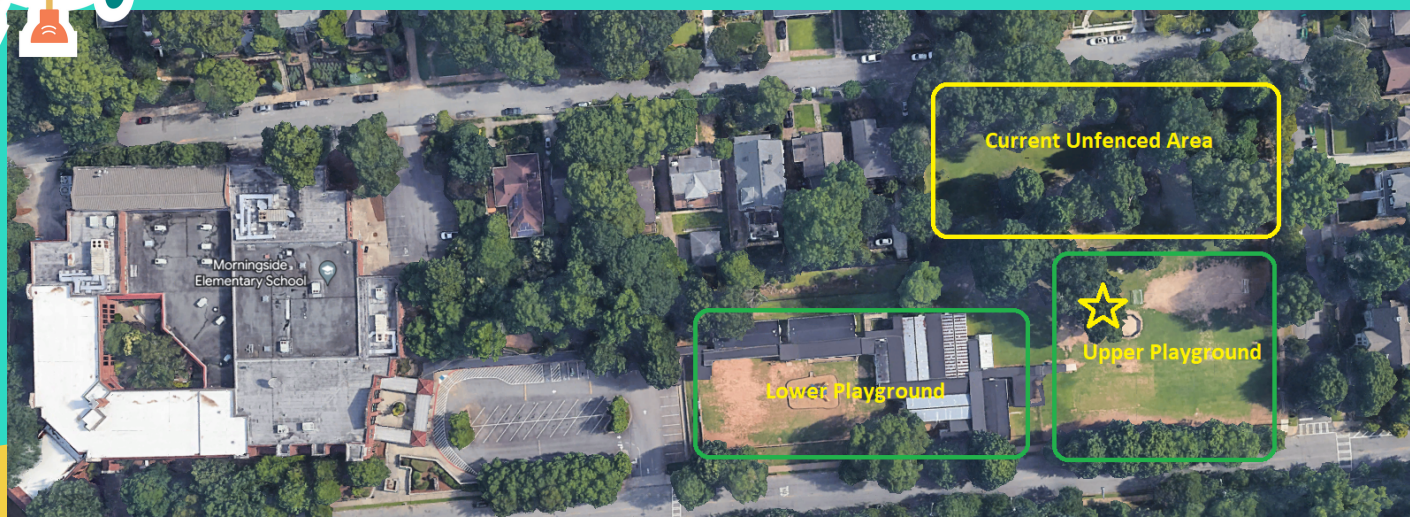


Atlanta Public Schools owns the property on the corner of Green Cove & Clemont Drive. The space is currently not fenced in and is rarely used by students. This has been true for students who attended Inman Middle School and currently, Morningside Elementary at the Inman building.

Virginia-Highland Elementary will be a new elementary school that will move into the Inman Middle School building permanently in August of 2023. Taking into consideration the needs of elementary students, the benefits of outdoor play, safety and security and sun exposure, the following decisions have been made.



Lower Playground



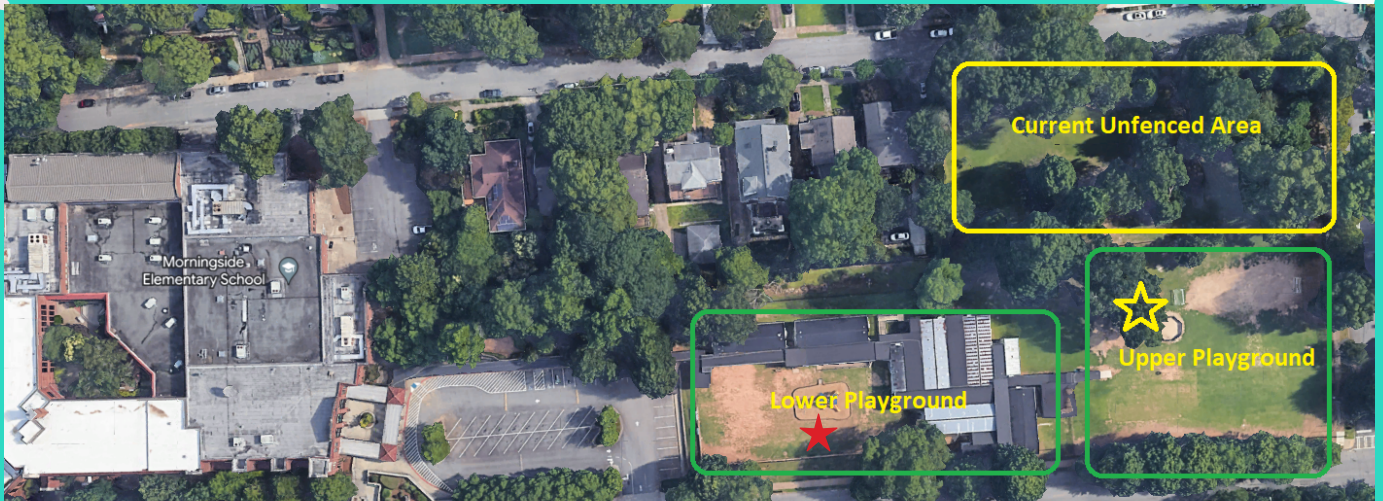
- One of two things will occur once the portables are moved out:
 - a. This area will be mulched, sodded or seeded.
 - b. Turf will be installed contingent upon business partners, corporate matches and VHE PTO.
- This area is an open space with very little shade throughout the day. Without the portables and wooden walkways, students and teachers would be exposed to direct sunlight. Use the website link below to learn more about sun exposure per the American Academy of Dermatology.

<https://www.atlantapublicschools.us/Page/69626>

APS is finalizing the final layout of the proposed fence and will share this with the community in May.



Upper Playground



The small red STAR on the picture represents where the current playground structure is located. The large yellow STAR on the picture represents where the playground structure will be moved to if the money is secured to put turf on the Lower Playground. If the money is not secured, the playground structure will remain where it is currently located.

This area is an open space with very little shade throughout the school day. Students and Teachers would be exposed to direct sunlight. Use the website link below to learn more about sun exposure per the American Academy of Dermatology.
<https://www.atlantapublicschools.us/Page/69626>



Unfenced Area



This land is owned by Atlanta Public Schools. This land does not currently have a fence. APS intends on adding a fence around the area that is located on the corner of Clemont Drive & Green Cove. The fence will be a wrought iron fence to match the current fencing that surrounds the lower and upper playgrounds. The fence will allow for extra security. This area provides adequate shade for students and teachers. A gate will be added to the fencing off of Clemont Drive.

The addition of this space will be used as an outdoor play space, outdoor classroom area and possible school garden. Use the website link below to learn more about the benefits of outdoor play. <https://www.atlantapublicschools.us/Page/69626>

APS is finalizing the final layout of the proposed fence and will share this with the community in May.

The Virginia Highland community has used the unfenced area for many years as a greenspace and social gathering spot. Virginia-Highland Elementary will work with the community to allow them to continue to use the space after school hours and during the weekends. Alcoholic beverages, dogs, guns, tobacco products, and vapes are not allowed on school property at any time.