

2012-2013 Atlanta Public Schools Charter Schools



Annual Academic Report



Table of Contents

A Letter From the Executive Director.....	3
Charter School Overview.....	4-5
CRCT Comparison.....	6 - 7
Charter Schools	8 - 77
<i>Atlanta Neighborhood Charter</i>	8
<i>Drew Charter School</i>	22
<i>The Intown Academy</i>	29
<i>The Kindezi School</i>	36
<i>KIPP Atlanta Collegiate</i>	43
<i>KIPP Strive Academy</i>	46
<i>KIPP Vision Academy</i>	53
<i>KIPP WAYS Academy</i>	60
<i>Latin Academy</i>	67
<i>Wesley International Academy</i>	71
Source Notes	78

Letter From the Director...



The last year has been a busy one for the Office of Innovation as Atlanta Public School's Board of Education approved the state's first truly independent conversion charter school, the state's first cluster of start-up charter schools, and a charter amendment creating an enrollment priority for Pre-K students at a high-performing charter school. These innovations are expected to bring not only positive outcomes for students attending these schools, but will also allow the piloting of innovative and best practices that will be shared to benefit students throughout the district.

The outcomes presented in these pages are the result of hard work on the part of students, parents and staff at all of the district's charter schools. As the state worked this year to roll out the College and Career Readiness Performance Index under its waiver from No Child Left Behind, the data show that the great majority of district charter school students continued to achieve and surpass the goals established in their charters. In addition to this ongoing work, for the first time, the highest performing schools featured here have begun to work closely together with other charter and traditional schools across the district to ensure that all students have access to innovative and effective programming.

These school-level successes play out against the backdrop of increased dedication from board members, district employees, charter school employees, and Atlanta residents to collaborate and to focus on results and on students, rather than on ideologies. The only way forward is to acknowledge and respect differences but pledge to work together toward our common goal of preparing all students for success in life, service and leaders.

Regards,

Allen Mueller

Allen Mueller

Executive Director of Innovation

About This Report...

The 2012 Charter School Annual Report is designed to give the reader a snapshot of each school's academic performance and profile. The report provides more data, than in previous years, and displays that data in a new format. Readers are encouraged to look closely at all of the data provided for each school and analyze them holistically, in order to gain a clear picture of the school's academic performance. We caution against making general assumptions based upon one or two elements found in a school's data.

To support the reader's understanding, an overview of the types of tables and charts presented in the report can be found, below:

Performance Tables – provide the reader with school performance on state-mandated Criterion Referenced Competency Tests (CRCT) and End of Course Tests (EOCT), between the 2009 and 2012 school years. The tables are organized by grade and subject for the CRCT and by subject and test administration for the EOCT. These tables display achievement data, by the percentage of students meeting standards on the given assessment.

Gap Tables – are provided as identifiers of highest performing subgroup(s) within the school and subgroup performance that may be potential areas of concern. The more the reader knows about the school's curriculum, instructional strategies and supports, teacher and leader quality and climate and culture, the better her/his understanding of a particular gap's significance will be. These tables present both the percentage of students meeting standards and the percentage of students exceeding standards.


- *Race/Ethnicity* gap tables identify the highest performance for each subject test, in **green text** with a light green border.

- *Free & Reduced Priced Lunch* and *Students with Disabilities* gap tables identify subject tests where performance shows no historical gap in **green text** with a light green border.

- On each table where gaps are identified, those gaps between 10 percentage points and 19.9 percentage points give rise to moderate concern. They are identified by **grey text** with a pale background. Gaps which are 20 percentage points or larger are flagged for immediate attention. They are identified by **dark red text** with a light red background.

Demographic Comparisons– We report demographic group sizes if they are larger than 10 because it is the standard practice of federal and state accountability. However, when making comparisons to or between groups of very small size, conclusions should be drawn with caution. While tiny changes (as little as one student) can cause enormous shifts in percentage results for small groups, for large groups to evidence the same percentage change would take greater effort.

For example, with a group size of 10, only 7 students are needed to exceed standards for a result of 70% Exceeds. However, for a group size of 100, it would take 70 students to reach the same 70% Exceeds marker. The example below illustrates the point:



ABC SCHOOL				
CRCT Subject	Group A n=250 students		Group B n=10 students	
	Meets & Exceeds	Exceeds	Meets & Exceeds	Exceeds
	Reading	92% or 230 students	20% or 50 students	100% or 10 students

Here, Group B’s Exceeds performance is 20 percentage points higher than Group A’s (40% minus 20%). However, when considering the relative size of the groups (250 students versus 10), it is clear that much more than the presented data would be needed before a conclusion regarding these results could be made. For example, the 4 students in Group B may have shared the same tutor, provided by their parents, outside of the school day. ABC School might then consider how to extend support to Group A students based upon identified needs and budget constraints. The gap is flagged in red denoting the need for a much closer look at the instructional program and its performance results to determine if changes need to be made.

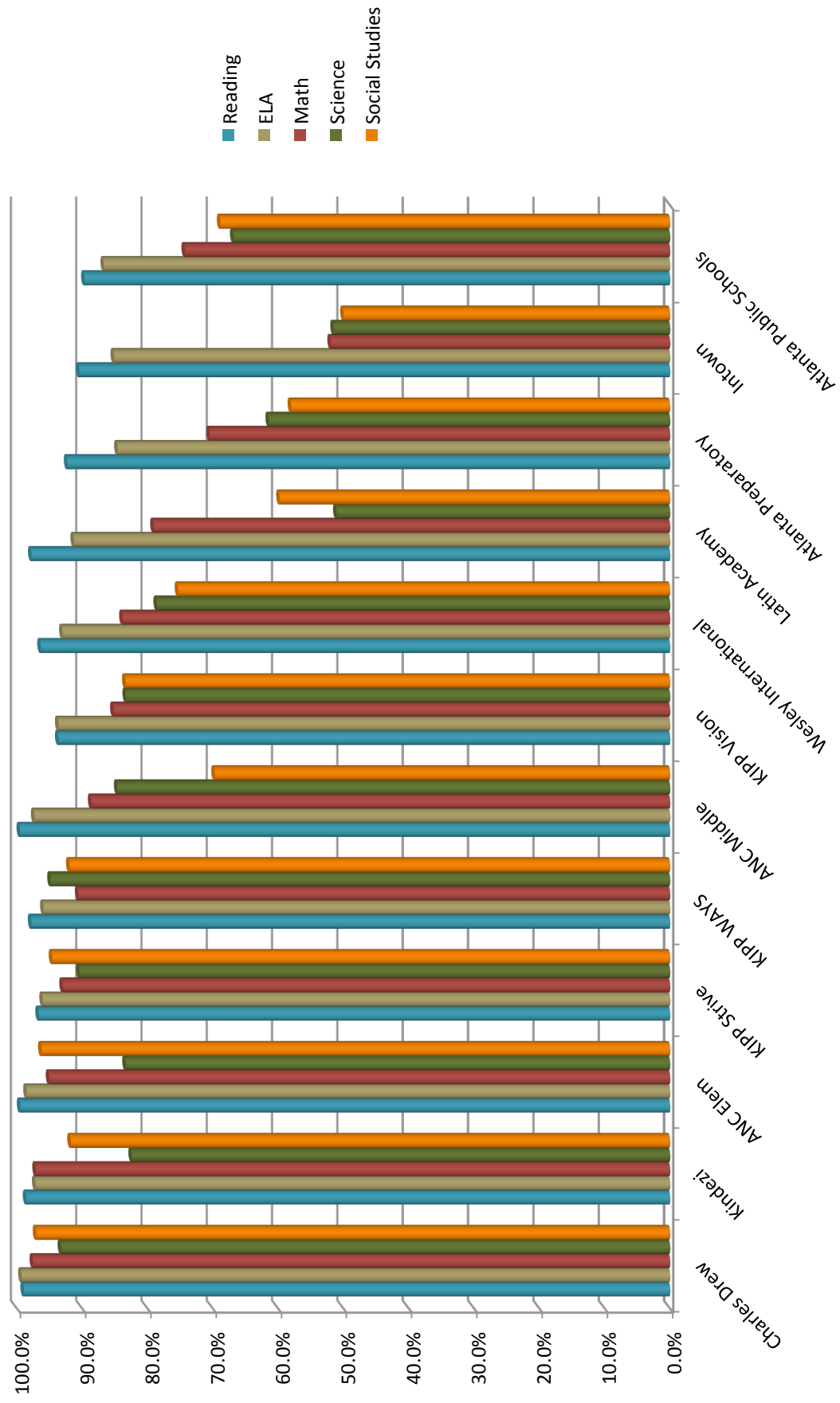
n- The number of students tested may differ depending upon the subject. The differences are very small, usually between 1 and 4 students. For ease of reference and display, each demographic group displays the largest number of students across the subject assessments.

Charts – Where possible, those CRCT grades with promotional requirements have charted results in reading, math and science. Schools with fewer than 3 tested grades will have charts for their assessed 2012 grade levels.

Abbreviations – SWD (Students With Disabilities) FRL (Free and Reduced Lunch)

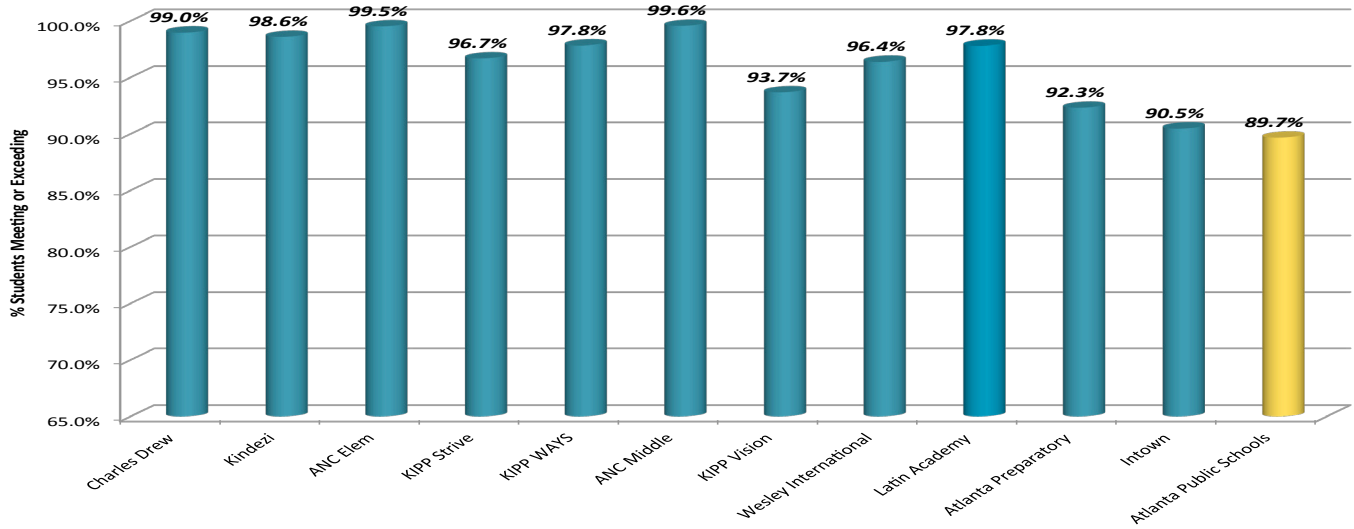
2013 CRCT Data

% Students Meeting or Exceeding



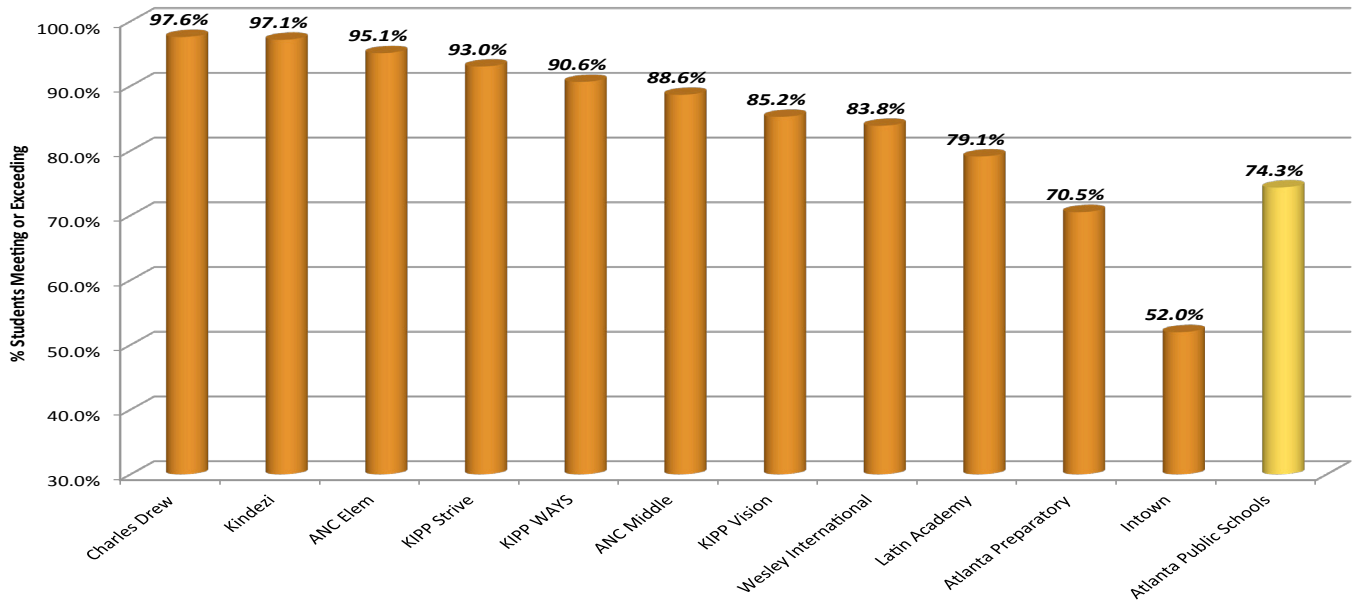
2013 Reading CRCT

% Students Meeting or Exceeding



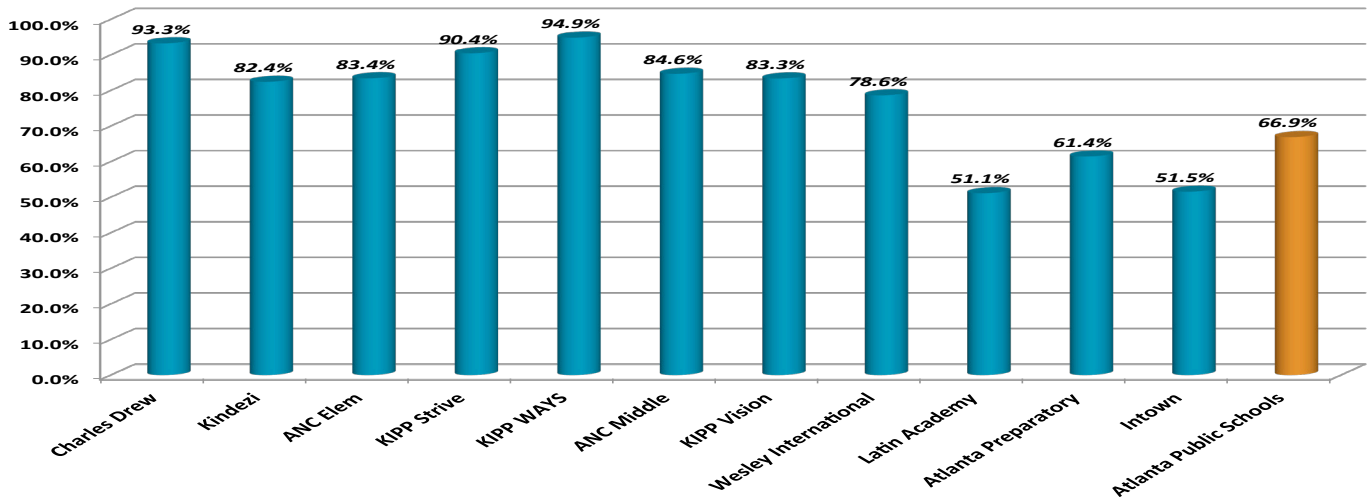
2013 Math CRCT

% Students Meeting or Exceeding



2013 Science CRCT

% Students Meeting or Exceeding





Principal: Ms. Lara Zelski

Enrollment: 360

Serves: Kindergarten through Grade 5

Atlanta Neighborhood Charter School



Atlanta Neighborhood Charter Elementary

Principal: Ms. Lara Zelski

Enrollment: 360

Grade Levels Served: Kindergarten through Grade 5

APS Overall 2013 CRCT Ranking:

Reading: 2nd out of 53

ELA: 6th out of 53

Math: 7th out of 53

Science: 8th out of 53

Social Studies: 5th out of 53

Enrollment Demographics:

Free & Reduced Lunch: 11.3%

Students with Disabilities: 12.1%

Asian: 0.2%

Black: 16.8%

Hispanic: 4.4%

Multi-Racial: 5.9%

White: 72.7%

The Atlanta Neighborhood Charter School (ANCS) is a K-8 charter school with two campuses formed by the merger of two charter schools. These schools, Neighborhood Charter School (open 2001), serving kindergarten through fifth grade students and, Atlanta Charter Middle School (open 2005), serving sixth through eighth grade students, are located in the Grant Park/Ormewood Park communities of Atlanta.

The ANCS charter petition was formally approved by the Georgia State Board of Education in March 2011, after receiving approval from the Atlanta Board of Education. The current ANCS charter agreement runs from July 1, 2011 until June 30, 2016

The school operates from a constructionist framework, placing students at the center of their learning, actively engaging them in hands-on exploration and moving them towards mastery of higher order concepts and skills.

Atlanta Neighborhood Charter Elementary (ANCS-E) performed above the district on 15 out of the 15 CRCT assessments administered in 2012. The school has evidenced consistently high performance on each of the CRCT subject assessments, from 2009 – 2012.

Gaps exist between the percentage of black students and the percentage of white and multi-racial students meeting or exceeding standards on all CRCT subject tests, in 2012. Gaps in exceeding standards also exist for students eligible for FRL and students with disabilities.

Atlanta Neighborhood Charter (ANC) Elementary CRCT Results (2009 - 2013)							
% Meeting & Exceeding							
	Grade 3		Grade 4		Grade 5		
	ANC Elem	APS	ANC Elem	APS	ANC Elem	APS	
Reading							
2013	100.0	85.2	100.0	88.0	98.6	87.4	
2012	92.2	83.8	95.2	83.3	100	85.1	
2011	98.3	84.5	100.0	80.5	100.0	84.4	
2010	96.7	81.1	100.0	81.2	97.8	80.8	
2009	89.5	84.4	96.7	86.2	96.2	85.9	
ELA							
2013	97.0	78.7	98.6	83.6	100.0	89.7	
2012	96.8	83.5	93.5	85.1	100	89.8	
2011	94.7	82.8	100.0	82.2	100.0	88.2	
2010	95.0	80.2	96.5	82.7	91.3	87.7	
2009	86.0	82.9	90.0	87.2	87.5	92.2	
Math							
2013	91.5	66.4	97.0	74.3	96.9	72.0	
2012	90.3	67.7	83.1	66.7	98.4	71.3	
2011	86.4	69.9	94.8	68	100.0	76.4	
2010	90.0	65.4	84.2	63.8	84.8	69.1	
2009	66.7	73.1	68.3	71.5	66.1	77	
Science							
2013	98.6	66.4	94.4	72.0	91.4	68.9	
2012	90.9	64.9	90.6	69.8	89.2	66.8	
2011	90.0	70.6	88.3	68.1	87.5	66.7	
2010	95.0	69.4	89.5	72.1	89.1	68.6	
2009	82.5	75	70.0	75.9	82.1	74.4	
Soc Studies							
2013	95.8	74.9	94.4	69.6	98.6	69.8	
2012	93.9	71.1	90.6	67.1	93.8	63.6	
2011	88.3	77.2	96.7	69.7	92.9	65.1	
2010	96.6	70.3	84.2	64.6	91.3	64	
2009	82.5	70.3	76.7	64.5	85.7	65.5	

Atlanta Neighborhood Charter Elementary

2013 CRCT Performance Demographic

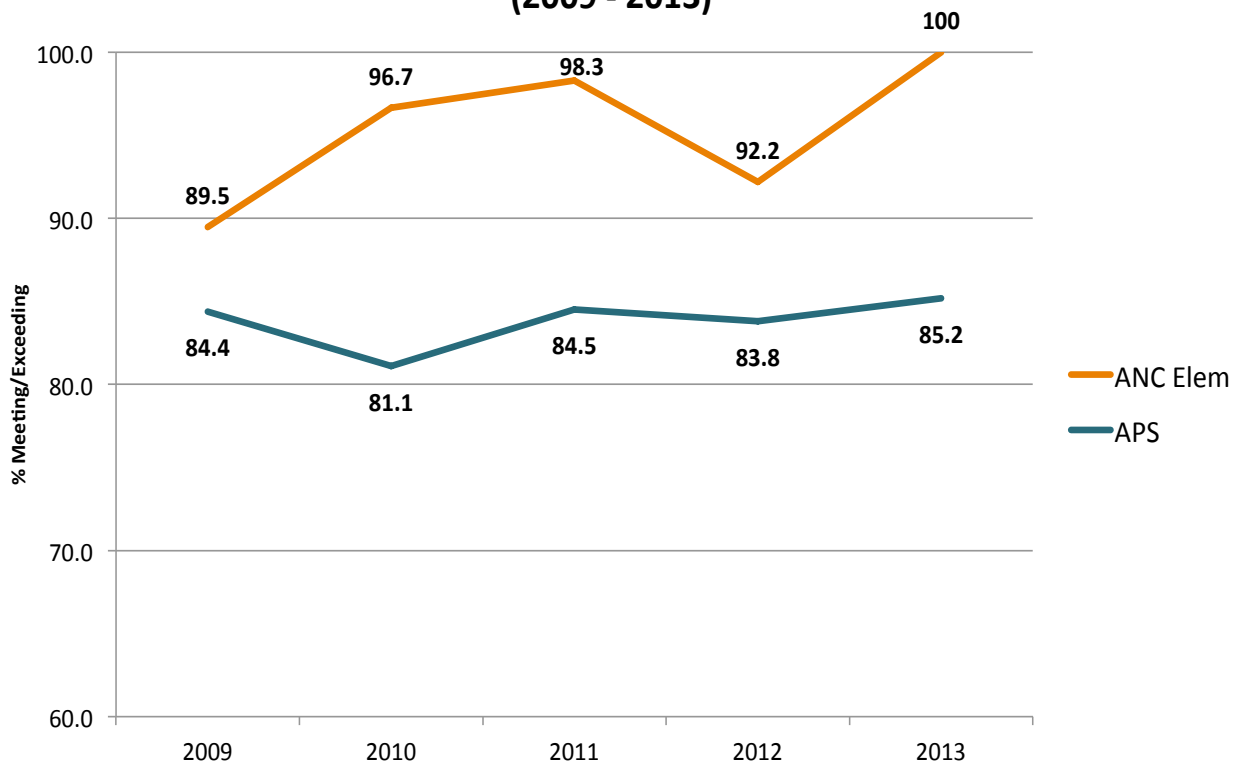
ATLANTA NEIGHBORHOOD CHARTER ELEMENTARY

<i>Subject</i>	<i>Black (n=37) % Meets & Exceeds</i>	<i>White (n=152) % Meets & Exceeds</i>	<i>Multiracial (n=14) % Meets & Exceeds</i>
Reading	100	100	93
ELA	100	98	100
Math	88	97	92
Science	84	97	93
Social Studies	92	97	100

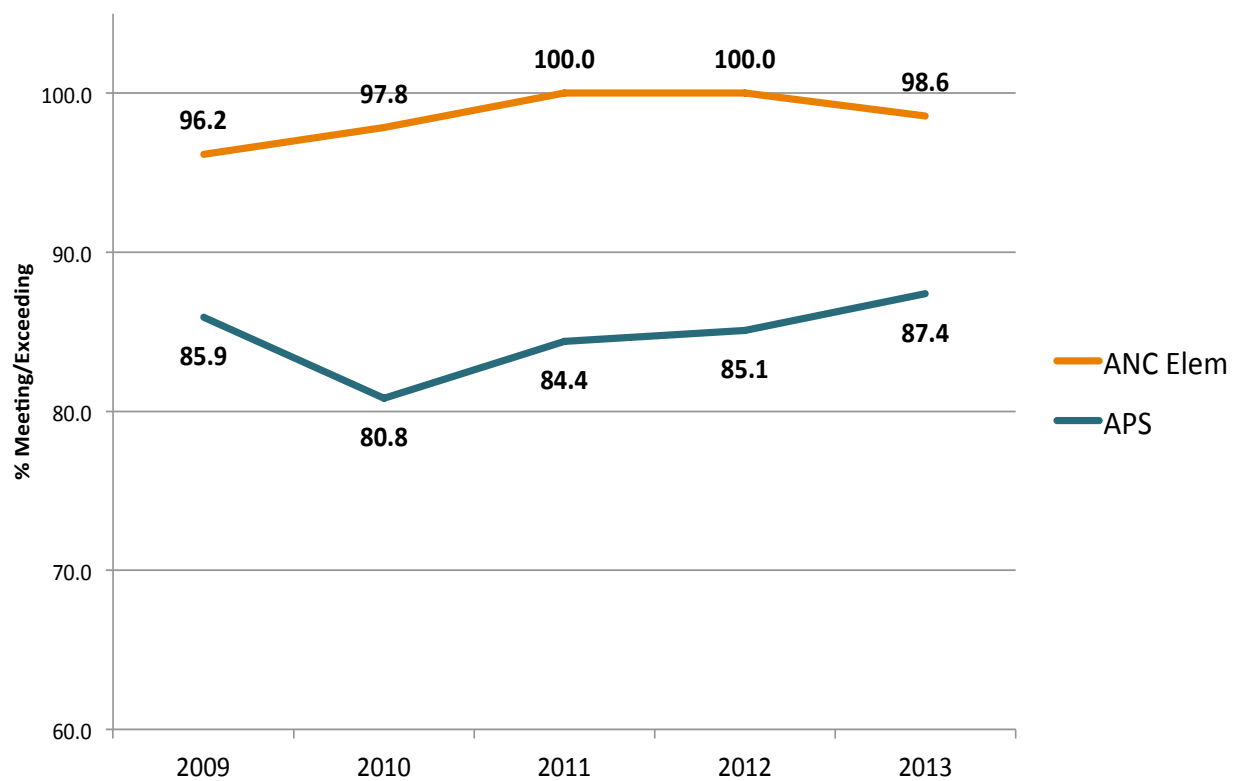
<i>Subject</i>	<i>Black (n=37) % Exceeds</i>	<i>White (n=152) % Exceeds</i>	<i>Multiracial (n=14) % Exceeds</i>
Reading	61	80	50
ELA	38	61	36
Math	42	66	31
Science	35	66	50
Social Studies	27	55	36

<i>Subject</i>	<i>Students w/ Disabilities (n=19) % Meets & Exceeds</i>	<i>Students w/o Disabilities (n=186) % Meets & Exceeds</i>	<i>Disabilities Gap % Meets & Exceeds</i>
Reading	100	99	1
ELA	94	99	-5
Math	94	95	-1
Science	89	96	-6
Social Studies	89	97	-8

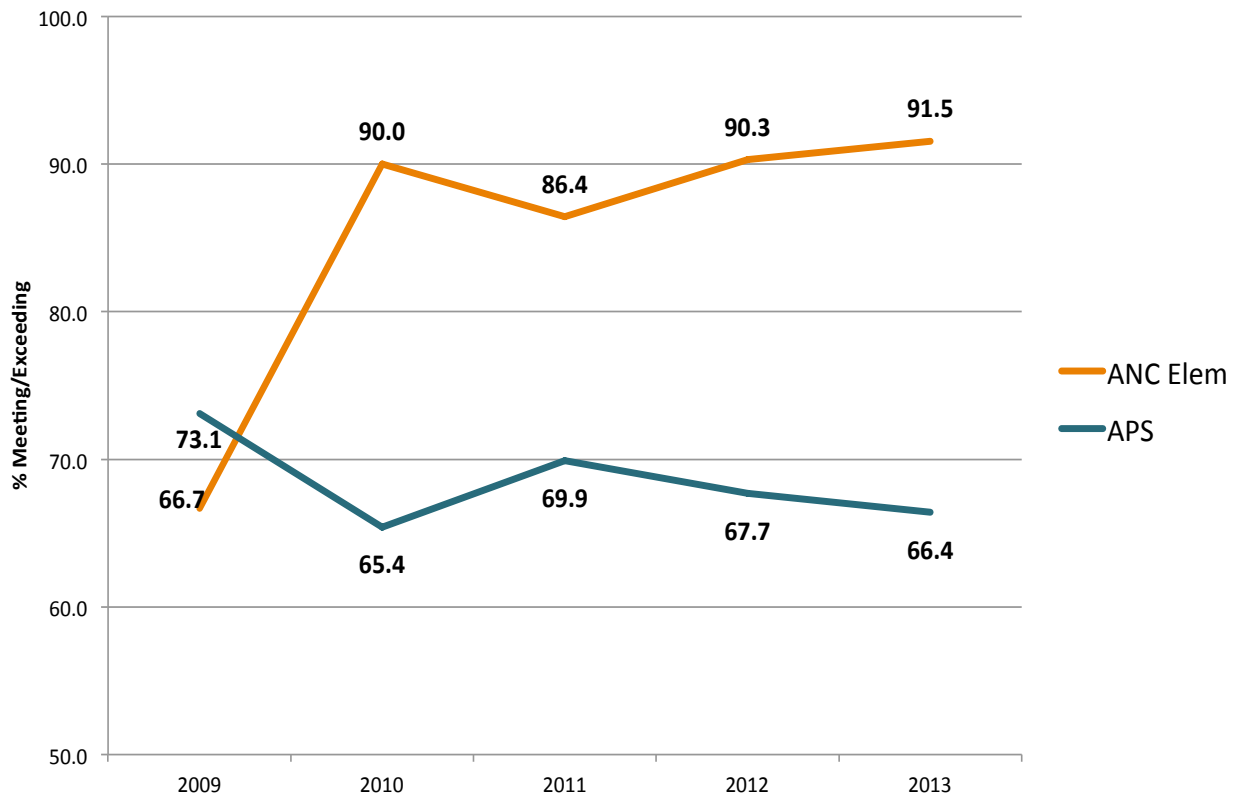
Comparative Grade 3 CRCT Reading (2009 - 2013)



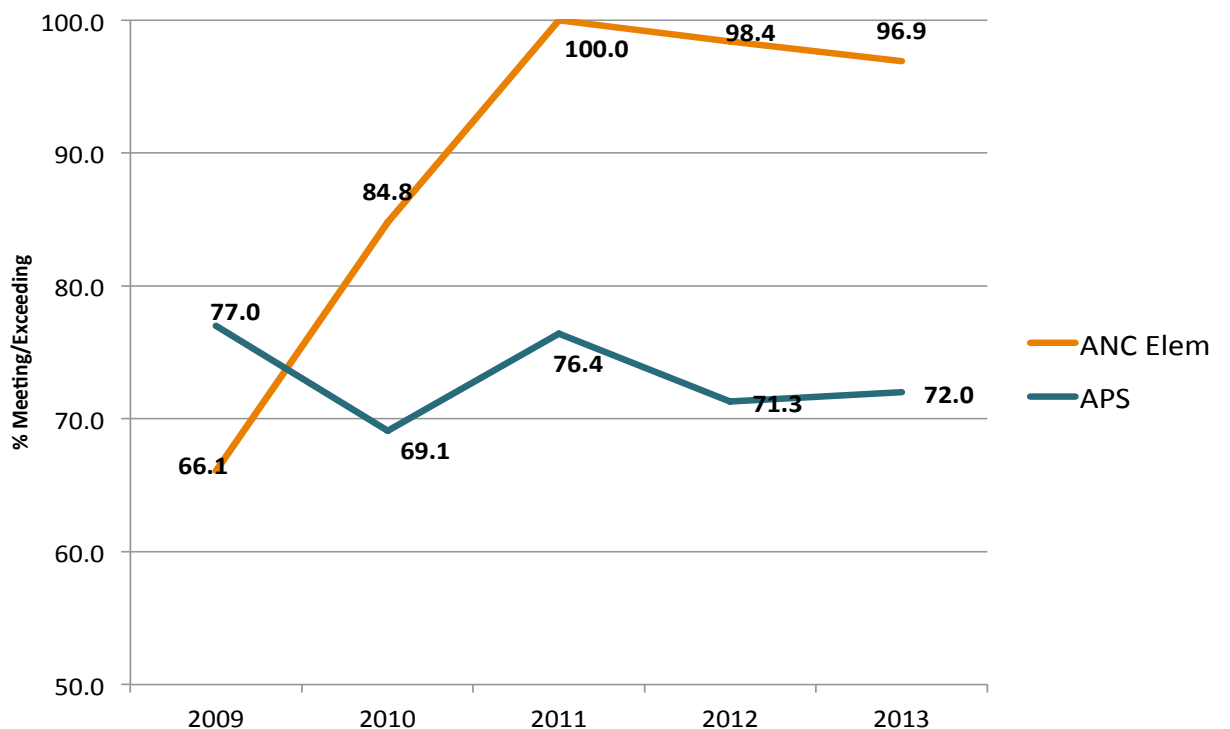
Comparative Grade 5 CRCT Reading (2009 - 2013)



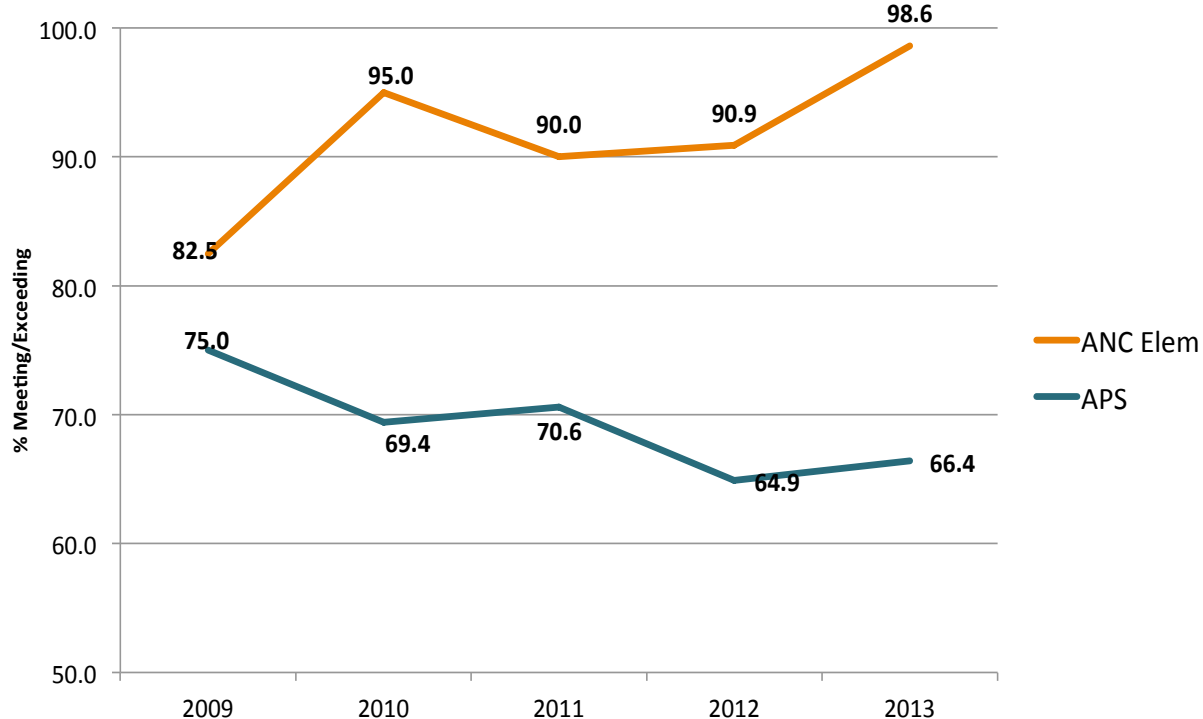
Comparative Grade 3 CRCT Math (2009 - 2013)



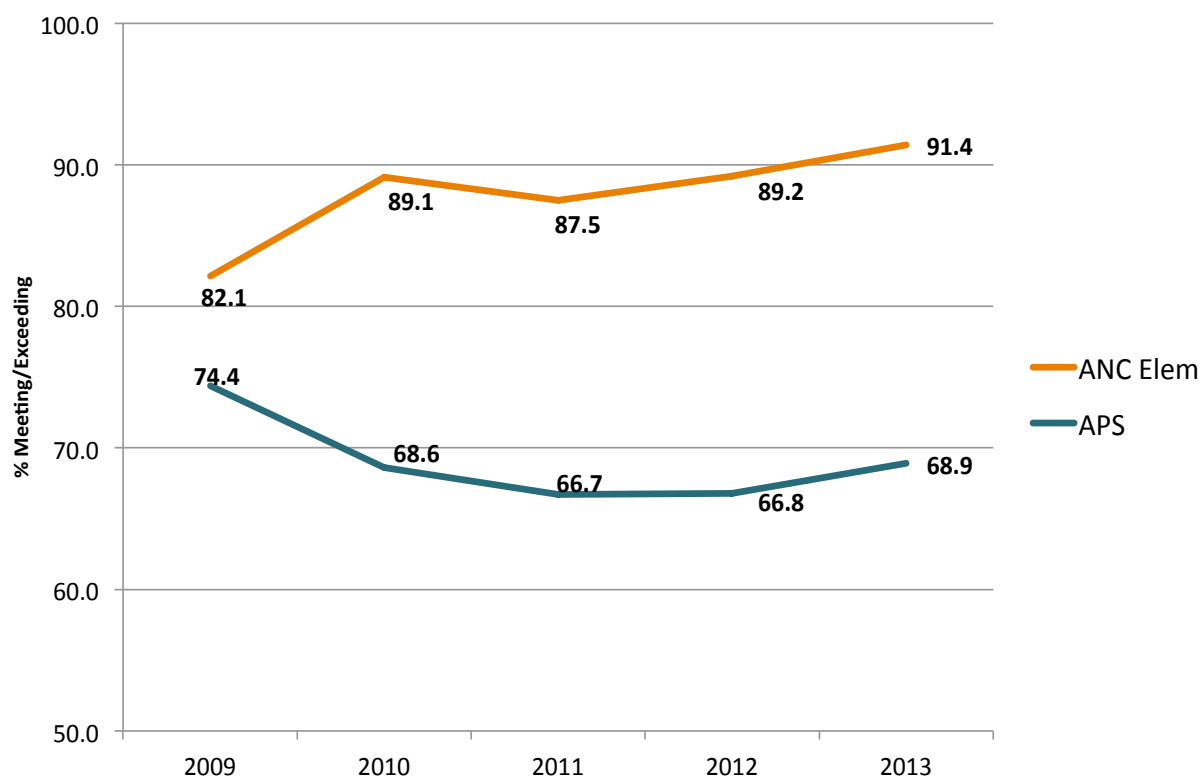
Comparative Grade 5 CRCT Math (2009 - 2013)



Comparative Grade 3 CRCT Science (2009 - 2013)



Comparative Grade 5 CRCT Science (2009 - 2013)





Principal: Ms. Cathey Goodgame

Enrollment: 216

Serves: Grades 6 through 8

Atlanta Neighborhood Charter School



Atlanta Neighborhood Charter Middle

Principal: Ms. Cathey Goodgame

Enrollment: 216

Grade Levels Served: Grades 6 through 8

APS Overall 2013 CRCT Ranking:

Reading: 2nd out of 23

ELA: 3rd out of 23

Math: 6th out of 23

Science: 7th out of 23

Social Studies: 8th out of 23

Enrollment Demographics:

Free & Reduced Lunch: 39.5%

Students with Disabilities: 14.7%

Asian: 1.7%

Black: 42.2%

Hispanic: 3.9%

Multi-Racial: 7.4%

White: 44.8%

Atlanta Neighborhood Charter Middle (ANCS-M) performed above the district on 15 out of the 15 CRCT assessments administered in 2012. Grade 7 performance on mathematics and science CRCT assessments has shown noteworthy improvement, since 2009.

Demographic tables identify performance gaps for black students in math, science and social studies, when compared to the performance of white and multi-racial subgroups. In reading and ELA, performance gaps exist between these groups in the percentage of students that exceed standards.

Performance gaps were also identified for students eligible for FRL and students with disabilities, in mathematics, science and social studies. Gaps exist in the total percentage of these student populations meeting, as well as exceeding, standards for these subjects.

Atlanta Neighborhood Charter (ANC) Middle CRCT Results (2009 - 2013)						
% Meeting & Exceeding						
	Grade 6		Grade 7		Grade 8	
	ANC Elem	APS	ANC Elem	APS	ANC Elem	APS
Reading						
2013	100	92.7	98.7	92.2	100.0	94.4
2012	98.6	92.2	98.6	90.2	100.0	92.1
2011	98.6	90.8	98.5	83.8	97.9	91.9
2010	94.4	85.6	95.9	82.5	97.3	89.8
2009	98.0	85.0	89.7	81.9	92.5	87.9
ELA						
2013	97.4	87.8	96.0	91.1	98.7	91.5
2012	95.9	88.3	98.6	91.0	97.2	92.9
2011	100.0	88.9	97.1	91.0	97.9	88.8
2010	98.6	89.7	95.9	88.8	94.6	88.4
2009	96.0	88.8	87.2	84.5	90.0	89.8
Math						
2013	92.1	72.0	91.8	83.3	81.7	70.2
2012	71.8	65.2	92.3	82.1	73.1	59.3
2011	68.5	62.4	96.8	79.8	63.8	65.9
2010	76.4	62.3	91.8	76.4	62.2	62.8
2009	68.0	65.4	71.8	75.1	72.5	65.0
Science						
2013	89.6	58.1	92.1	75.1	72.0	59.8
2012	71.6	55.3	89.0	75.2	72.0	53.8
2011	72.0	55.7	87.3	72.1	38.8	51.1
2010	75.0	55.4	83.7	70.4	56.8	52.4
2009	80.0	55.6	59.0	65.1	70.0	49.5
Soc Studies						
2013	70.1	62.5	67.1	71.3	72.0	63.4
2012	66.2	56.1	61.6	61.0	74.7	58.7
2011	61.3	60.3	62.0	61.5	55.1	60.8
2010	61.1	50.4	75.5	54.3	45.9	55.3
2009	N/A	N/A	N/A	N/A	57.5	51.1

Source: CRCT Georgia Department of Education School and District Summary Reports

Atlanta Neighborhood Charter Middle 2013 CRCT Performance Demographic

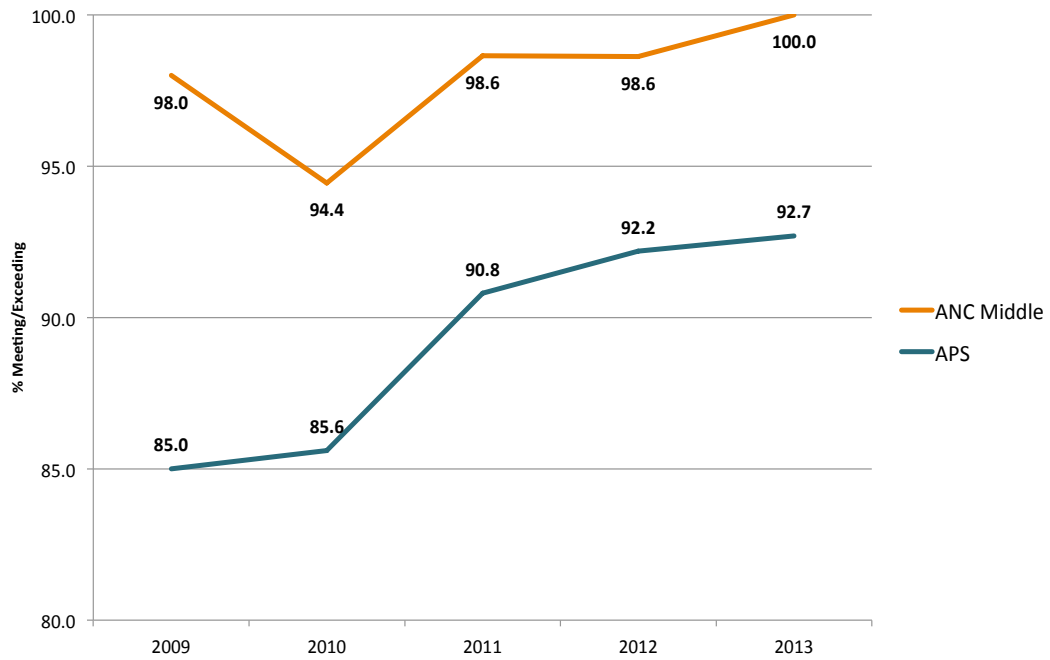
ATLANTA
NEIGHBORHOOD CHARTER MIDDLE

<i>Subject</i>	<i>Black (n=94) % Meets & Exceeds</i>	<i>White (n=103) % Meets & Exceeds</i>	<i>Multiracial (n=17) % Meets & Exceeds</i>
Reading	100	100	94
ELA	96	99	94
Math	79	97	93
Science	73	95	88
Social Studies	56	95	53

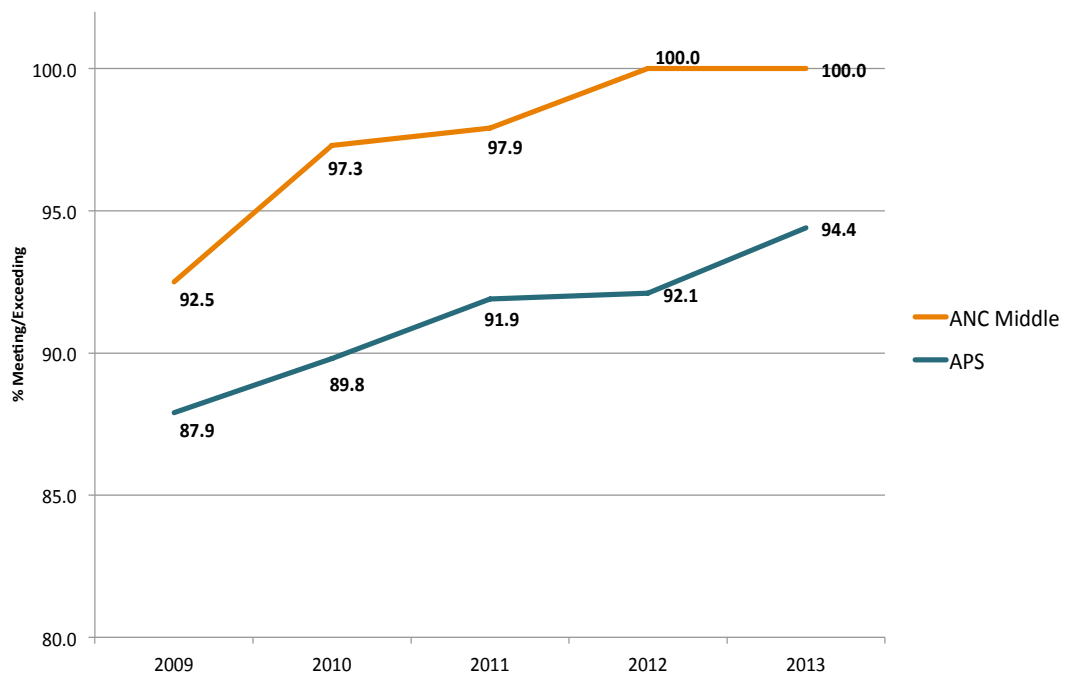
<i>Subject</i>	<i>Black (n=94) % Exceeds</i>	<i>White (n=103) % Exceeds</i>	<i>Multiracial (n=17) % Exceeds</i>
Reading	37	74	53
ELA	32	58	41
Math	9	50	40
Science	6	43	35
Social Studies	4	43	12

<i>Subject</i>	<i>Students w/ Disabilities (n=22) % Meets & Exceeds</i>	<i>Students w/o Disabilities (n=205) % Meets & Exceeds</i>	<i>Disabilities Gap % Meets & Exceeds</i>
Reading	95	100	-5
ELA	91	98	-7
Math	88	89	-1
Science	65	87	-22
Social Studies	44	73	-29

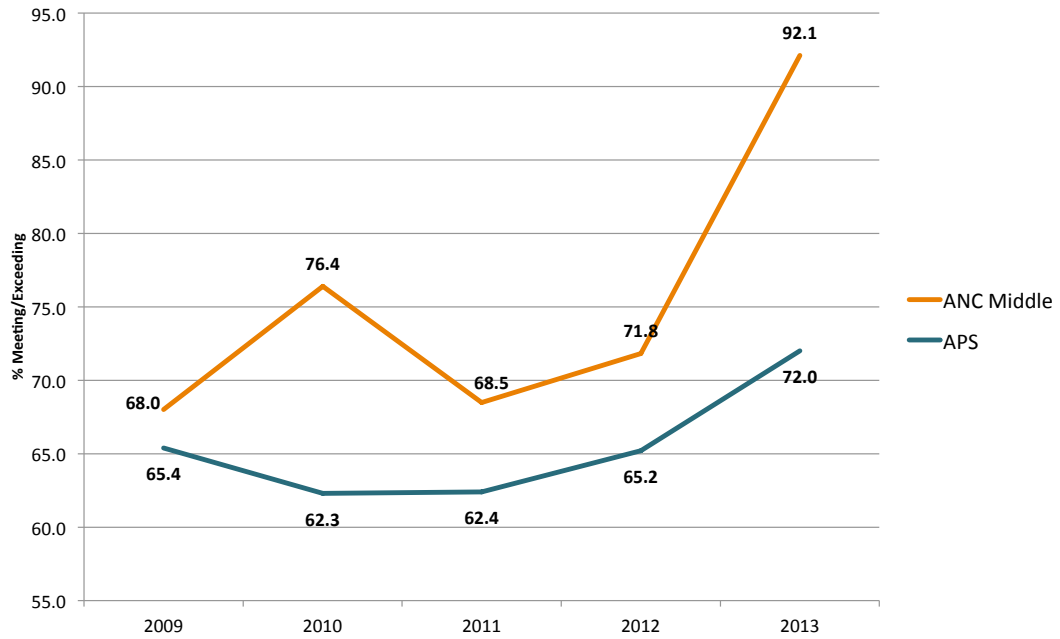
**Comparative Grade 6 CRCT Reading
(2009 - 2013)**



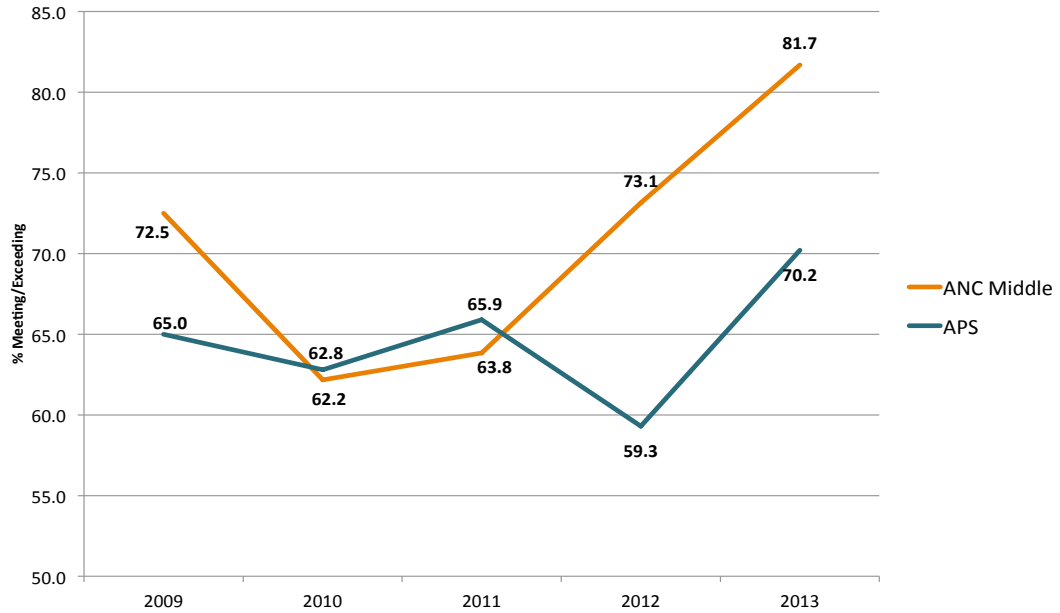
**Comparative Grade 8 CRCT Reading
(2009 - 2013)**



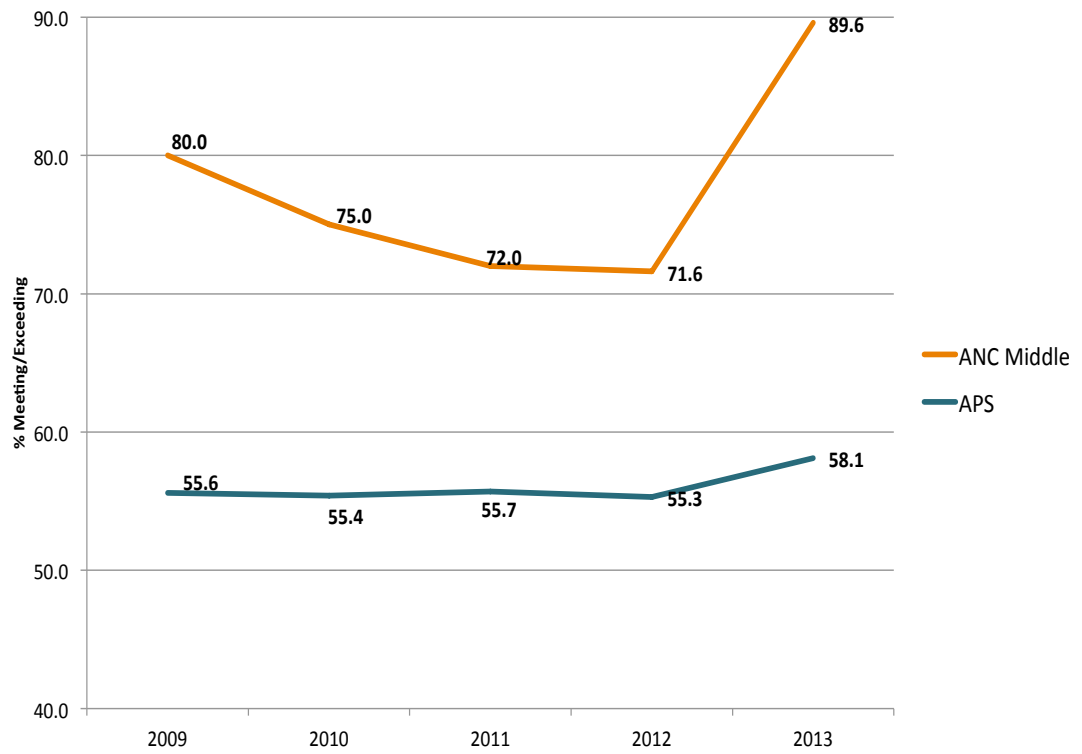
**Comparative Grade 6 CRCT Math
(2009 - 2013)**



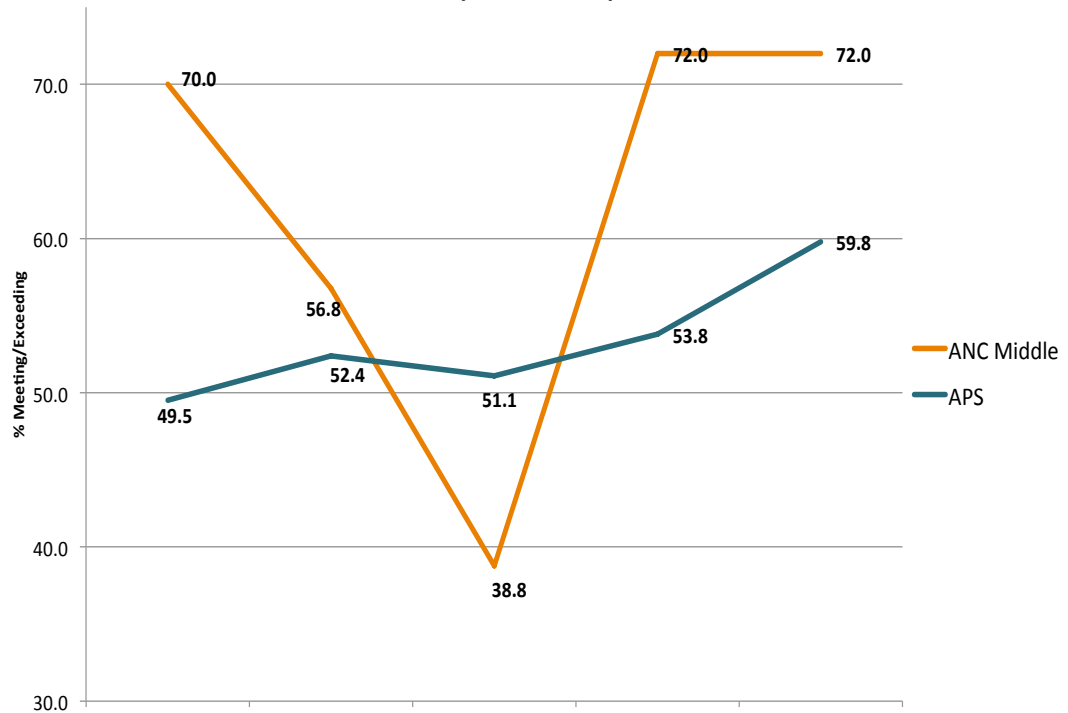
**Comparative Grade 8 CRCT Math
(2009 - 2013)**



**Comparative Grade 6 CRCT Science
(2009 - 2013)**



**Comparative Grade 8 CRCT Science
(2009 - 2013)**



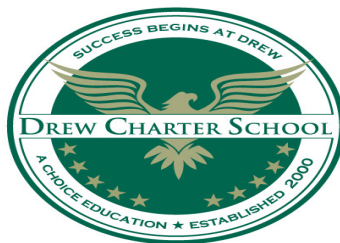


Principal: Mr. Don Doran

Enrollment: 970

Serves: Kindergarten through 8th grade

Drew Charter School



Charles R. Drew Charter School

Principal: Mr. Don Doran

Enrollment: 970

Grade Levels Served: Kindergarten through Grade 8

APS Overall 2013 CRCT Ranking:

Elementary:

Reading: 7th out of 53

ELA: 5th out of 53

Math: 1st out of 53

Science: 5th out of 53

Social Studies: 4th out of 53

Middle:

Reading: 3rd out of 23

ELA: 1st out of 23

Math: 1st out of 23

Science: 2nd out of 23

Social Studies: 1st out of 23

Enrollment Demographics:

Free & Reduced Lunch: 61.7%

Students with Disabilities: 5.7%

Asian: 0.9%

Black: 83.3%

Hispanic: 2.6%

Multi-Racial: 3.9%

White: 9.2%

Recognizing that a quality school is the key to a healthy, vibrant neighborhood, the East Lake Foundation, the Atlanta Board of Education, and parents in the community of East Lake opened Charles R. Drew Charter School – the city of Atlanta’s first charter school – in August 2000.

The educational plan at Drew incorporates excellent faculty and staff who serve as models of life-long learning; high standards and expectations for student achievement, innovative teaching strategies, rigorous student assessment and a commitment to continuous improvement; a vast array of enrichment opportunities, access to cutting-edge technology, extensive Before and After School Programs and, most importantly, involved supportive families. Drew also has a new focus on STEAM (Science, Technology, Engineering, Arts, and Math) with a foundation in literacy. By infusing these areas of curriculum into the school as a whole, Drew is working hard to give students the opportunity to compete in a global world. Drew Charter School ranks among the highest performing schools in APS and the State of Georgia. The school performed higher than the district on each of the 30 CRCT assessments administered in 2012. Of particular note, is the school’s performance in meeting standards in mathematics and science, across all grades.

Demographic tables identify performance gaps for black, FRL and SWD students in exceeding standards when compared to their counterparts.

Drew Charter CRCT Results (2009 - 2013)

% Meeting & Exceeding

	Grade 3		Grade 4		Grade 5		Grade 6		Grade 7		Grade 8	
	Drew	APS	Drew	APS	Drew	APS	Drew	APS	Drew	APS	Drew	APS
Reading												
2013	98.1	85.2	100	88	97.8494624	87.4	100	92.7	100.0	92.2	97.8	94.4
2012	100.0	83.8	99.0	83.3	97.4	85.1	98.0	92.2	100.0	90.2	100.0	92.1
2011	98.9	84.5	96.1	80.5	100.0	84.4	96.8	90.8	100.0	83.8	94.5	91.9
2010	92.8	81.1	95.6	81.2	98.6	80.8	92.6	85.6	92.9	82.5	96.6	89.8
2009	83.9	84.4	92.2	86.2	77.3	85.9	96.8	85.0	95.6	81.9	98.8	87.9
ELA												
2013	98.1	78.7	98.8	83.6	98.9	89.7	100.0	87.8	100.0	91.1	100.0	91.5
2012	100.0	83.5	100.0	85.1	98.7	89.8	100.0	88.3	98.9	91.0	98.9	92.9
2011	100.0	82.8	96.1	82.2	97.5	88.2	97.8	88.9	98.9	91.0	93.4	88.8
2010	94.0	80.2	94.4	82.7	98.6	87.7	96.8	89.7	98.0	88.8	96.6	88.4
2009	85.1	82.9	94.8	87.2	89.8	92.2	97.8	88.8	96.7	84.5	98.8	89.8
Math												
2013	98.1	66.4	100.0	74.3	98.9	72.0	95.1	72.0	95.9	83.3	97.8	70.2
2012	97.5	67.7	94.8	66.7	88.0	71.3	97.9	65.2	100.0	82.1	88.9	59.3
2011	96.6	69.9	94.8	68.0	95.0	76.4	87.1	62.4	98.9	79.8	81.3	65.9
2010	84.3	65.4	85.6	63.8	98.6	69.1	81.9	62.3	98.0	76.4	85.4	62.8
2009	71.3	73.1	84.4	71.5	62.5	77.0	80.9	65.4	85.6	75.1	81.7	65.0
Science												
2013	93.3	66.4	97.7	72.0	96.8	68.9	84.6	58.1	94.9	75.1	93.5	59.8
2012	97.5	64.9	97.9	69.8	92.1	66.8	91.8	55.3	97.8	75.2	91.1	53.8
2011	98.9	70.6	93.5	68.1	92.5	66.7	75.3	55.7	96.6	72.1	74.7	51.1
2010	89.2	69.4	84.3	72.1	94.3	68.6	63.8	55.4	88.8	70.4	78.7	52.4
2009	71.3	75.0	92.2	75.9	52.3	74.4	56.4	55.6	92.2	65.1	74.4	49.5
Soc Studies												
2013	98.1	74.9	96.5	69.6	97.8	69.8	96.2	62.5	99.0	71.3	94.6	63.4
2012	98.7	71.1	96.9	67.1	96.1	63.6	95.9	56.1	95.6	61.0	92.2	58.7
2011	100.0	77.2	96.1	69.7	96.3	65.1	94.6	60.3	96.6	61.5	83.5	60.8
2010	88.0	70.3	80.9	64.6	95.7	64.0	90.4	50.4	85.7	54.3	80.9	55.3
2009	78.2	70.3	87.0	64.5	55.7	65.5	N/A	N/A	N/A	N/A	68.3	51.1

Source: CRCT Georgia Department of Education School and District Summary Reports

Drew Charter School

2013 CRCT Performance Demographic

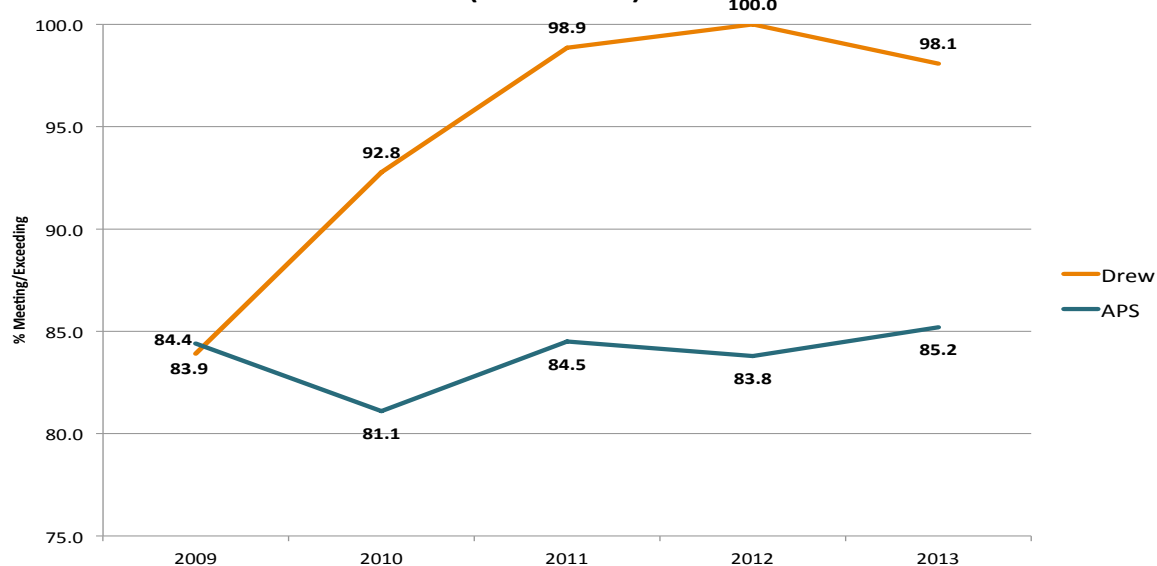
	Black (n=532)	White (n=15)	Multiracial (n=14)	Hispanic (n=13)
Subject	% Meets & Exceeds	% Meets & Exceeds	% Meets & Exceeds	% Meets & Exceeds
Reading	99	100	100	100
ELA	99	100	100	100
Math	97	100	100	100
Science	93	100	86	100
Social Studies	97	100	100	100

	Black (n=532)	White (n=15)	Multiracial (n=14)	Hispanic (n=13)
Subject	% Exceeds	% Exceeds	% Exceeds	% Exceeds
Reading	54	87	71	54
ELA	52	73	71	69
Math	50	73	79	69
Science	46	80	79	92
Social Studies	59	73	86	100

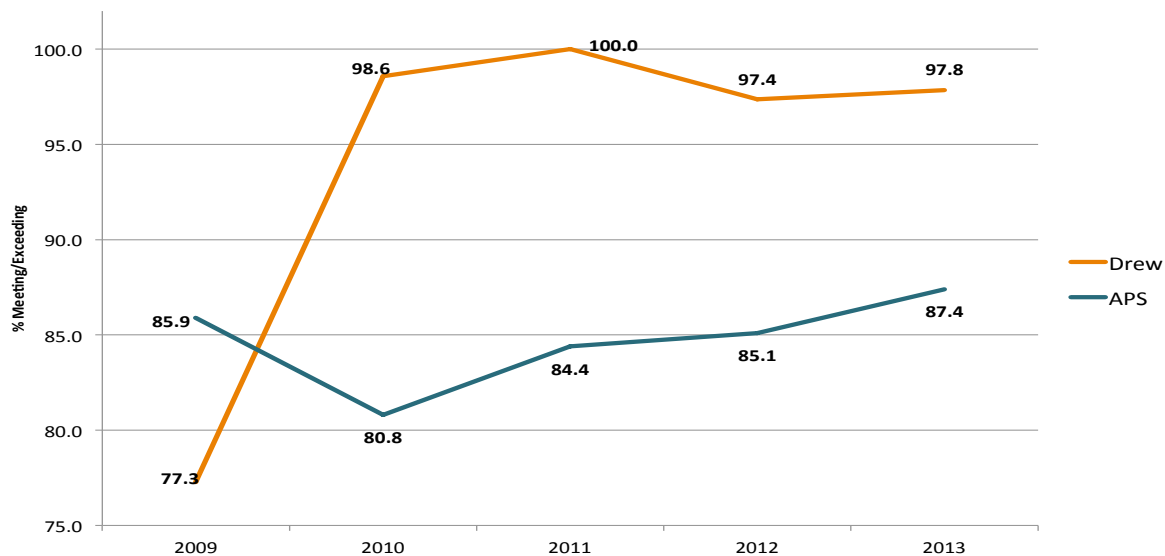
	Students w/ Disabilities (n=40)	Students w/o Disabilities (n=538)	Disabilities Gap
Subject	% Meets & Exceeds	% Meets & Exceeds	% Meets & Exceeds
Reading	92	99	-7
ELA	97	99	-2
Math	94	98	-4
Science	73	95	-22
Social Studies	93	97	-4



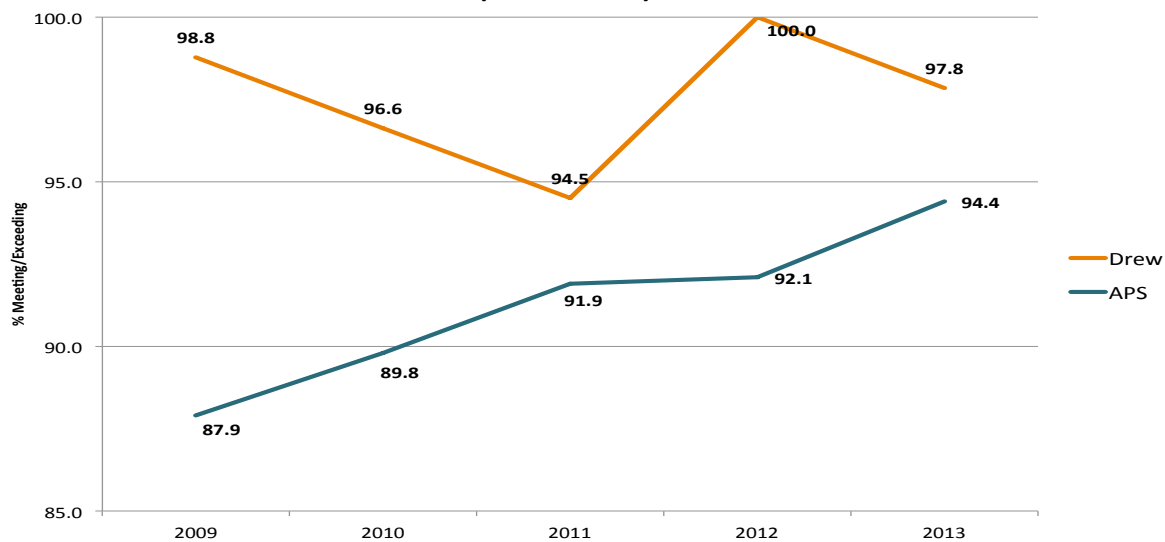
**Comparative Grade 3 CRCT Reading
(2009 - 2013)**



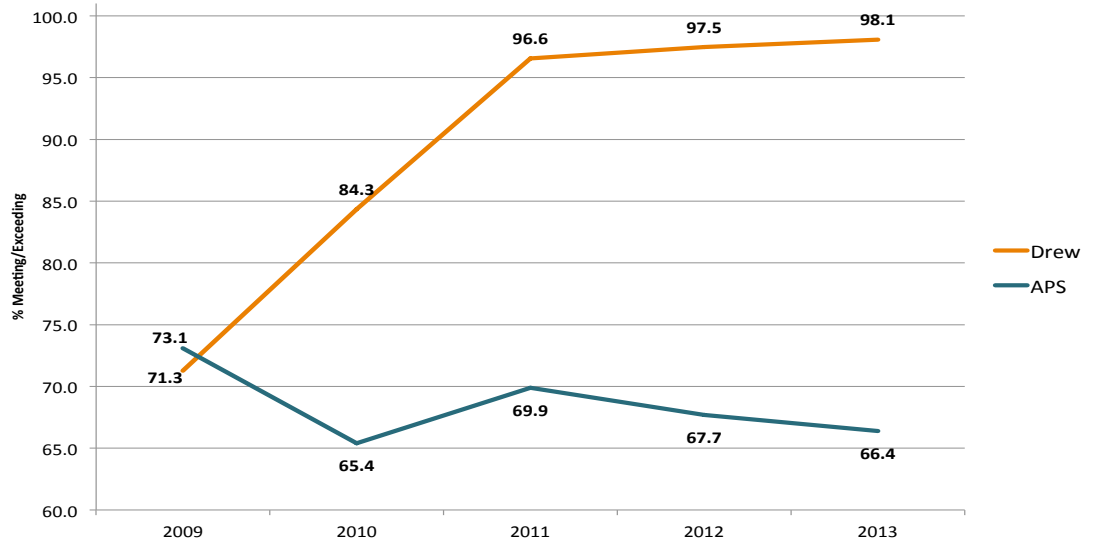
**Comparative Grade 5 CRCT Reading
(2009 - 2013)**



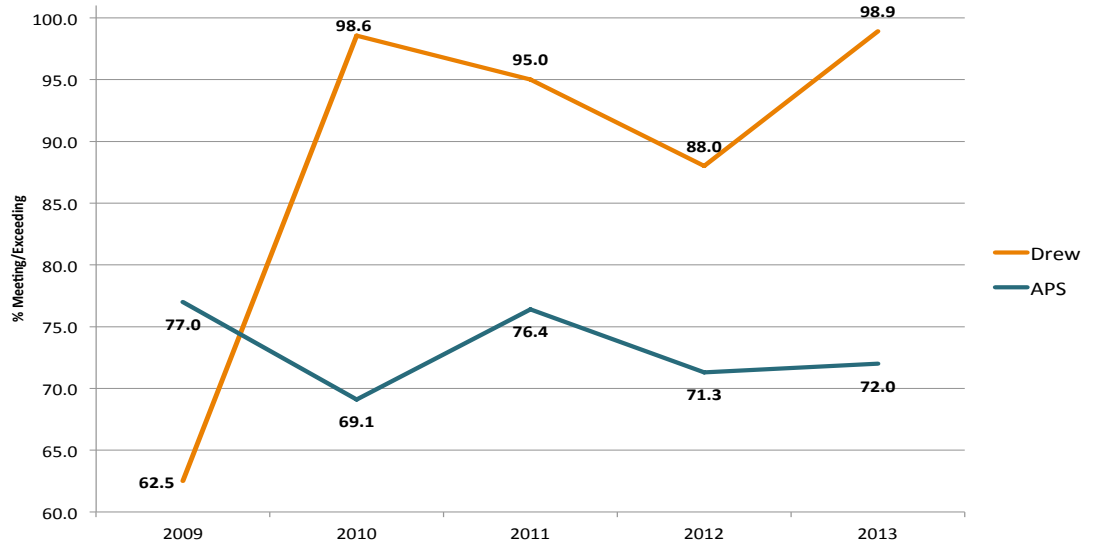
**Comparative Grade 8 CRCT Reading
(2009 - 2013)**



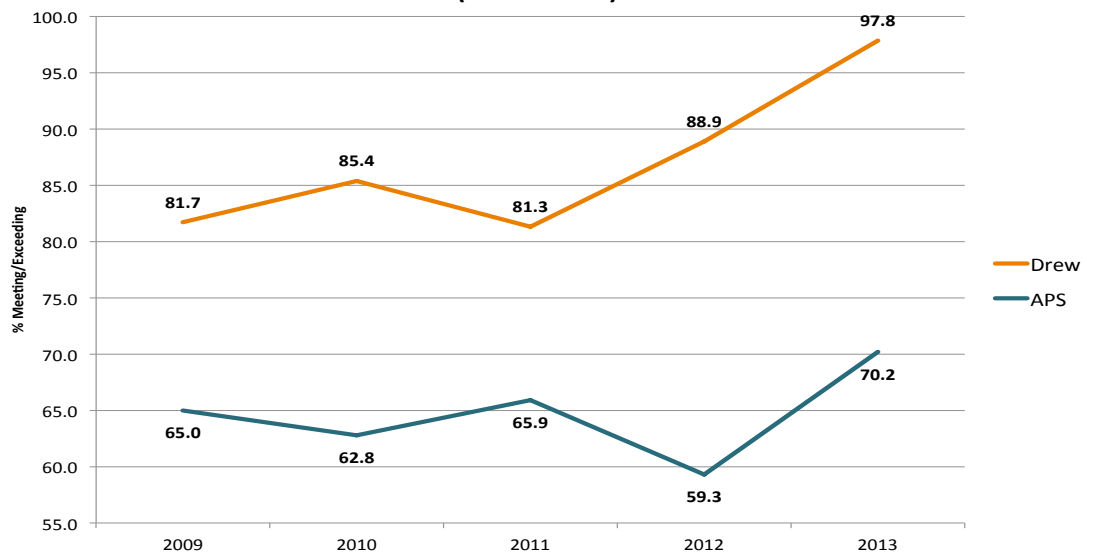
**Comparative Grade 3 CRCT Math
(2009 - 2013)**



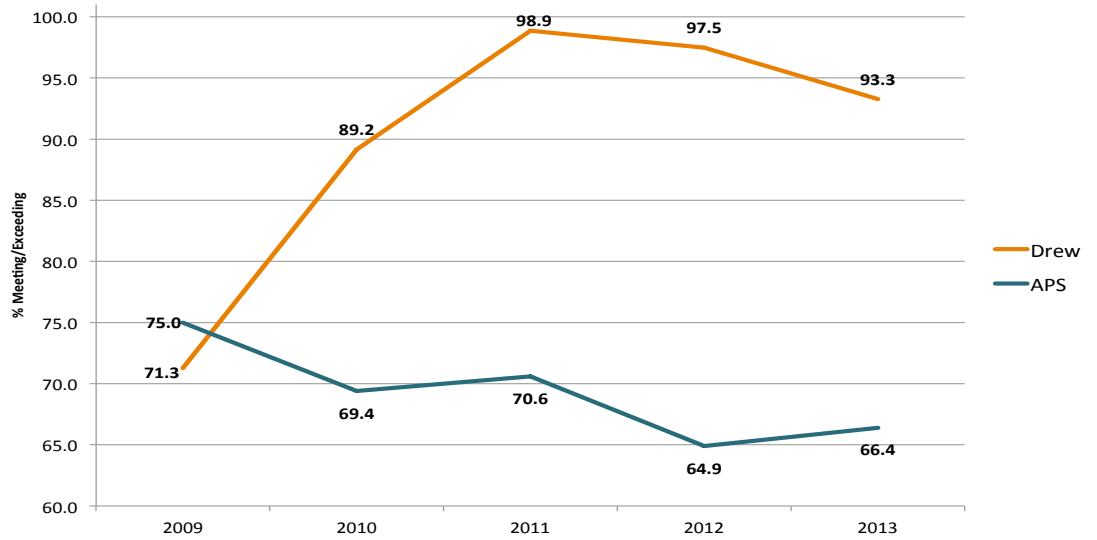
**Comparative Grade 5 CRCT Math
(2009 - 2013)**



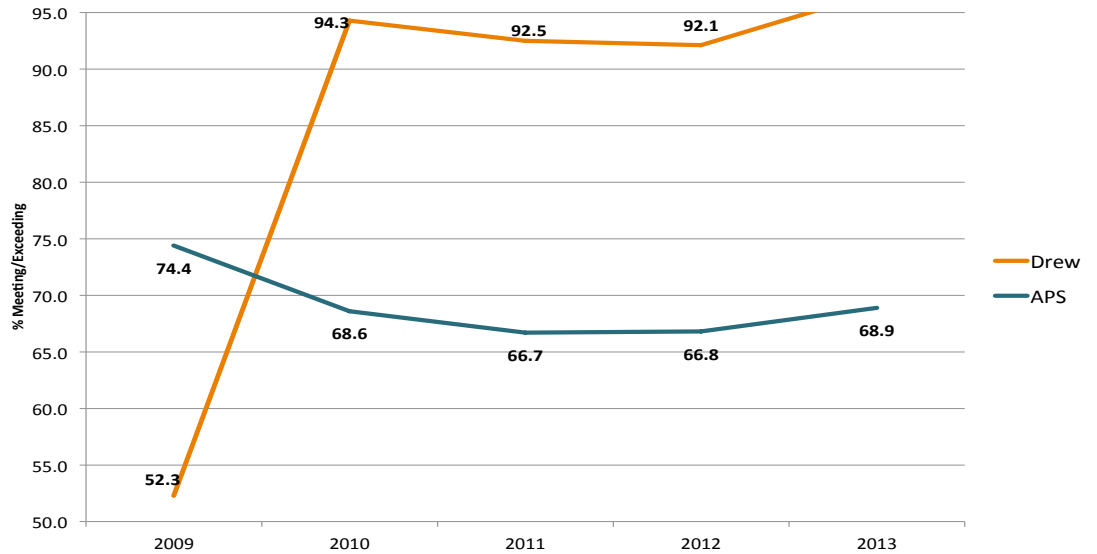
**Comparative Grade 8 CRCT Math
(2009 - 2013)**



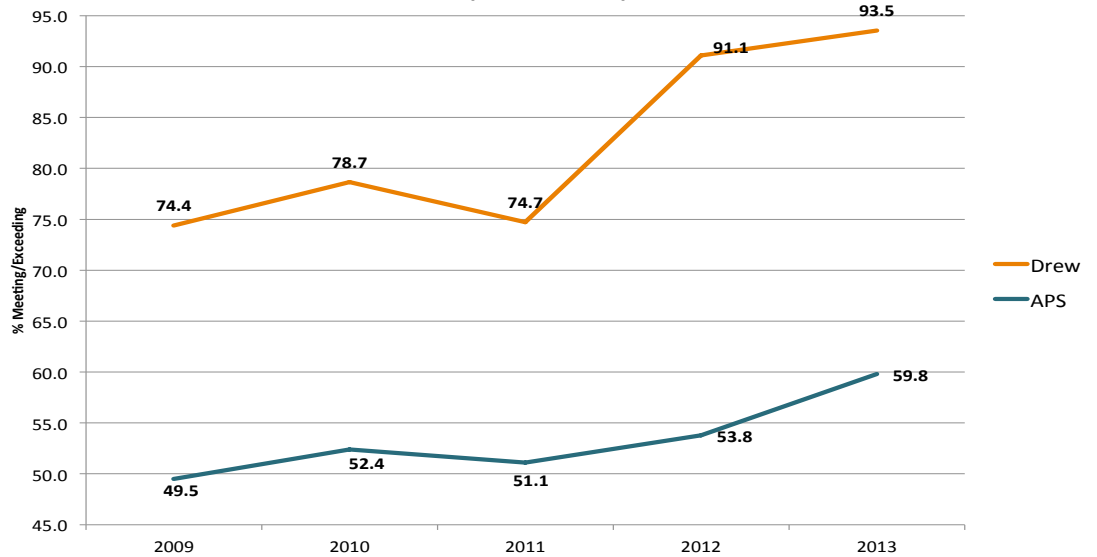
**Comparative Grade 3 CRCT Science
(2009 - 2013)**



**Comparative Grade 5 CRCT Science
(2009 - 2013)**



**Comparative Grade 8 CRCT Science
(2010 - 2013)**





Principal: Mr. Gene Dunn

Enrollment: 752

Serves: Kindergarten through 8th grade

The Intown Academy



Principal: Mr. Gene Dunn

Enrollment: 752

Grade Levels Served: Kindergarten through 8th

APS Overall 2013 CRCT Ranking:

Elementary:

Reading: 29th out of 53

ELA: 48th out of 53

Math: 56th out of 53

Science: 48th out of 53

Social Studies: 56th out of 53

Middle:

Reading: 9th out of 23

ELA: 2nd out of 23

Math: 22nd out of 23

Science: 18th out of 23

Social Studies: 15th out of 23

Enrollment Demographics:

Free & Reduced Lunch: 87%

Students with Disabilities: 5.5%

Black: 98.2%

Hispanic: 1.1%

Multi-Racial: 0.7%

White: 0%

The Intown Academy is a K-8 public, community-based charter school that opened August 9, 2010 in Atlanta's Old Fourth Ward neighborhood. The academy prepares students to excel academically and develop into informed and responsible world citizens, creative problem solvers and effective communicators.

The mission of The Intown Academy is to provide a world-class education in an innovative, community-based, setting that embodies the diversity, creativity, and global and entrepreneurial character of the Atlanta community.

Intown Academy performed below the district on 19 of 25 CRCT assessments. With the exception of Grade 7, performance in mathematics, science and social studies was far below that of APS.

Due to small population size, there is no reportable demographic data for FRL or SWD comparisons.

Intown Academy CRCT Results (2010 - 2012)											
% Meeting & Exceeding											
Grade 3			Grade 4			Grade 5			Grade 6		
Intown		APS	Intown		APS	Intown		APS	Intown		APS
Reading											
2012	75.0	83.8	61.5	83.3	87.0	85.1	93.1	92.2	96.4	90.2	
2011	57.1	84.5	71.8	80.5	92.7	84.4	95.9	90.8		83.8	
ELA											
2012	71.9	83.5	69.2	85.1	95.7	89.8	79.3	88.3	100.0	91.0	
2011	52.4	82.8	76.9	82.2	90.2	88.2	98.0	88.9		91.0	
Math											
2012	46.9	67.7	46.2	66.7	52.2	71.3	44.8	65.2	92.6	82.1	
2011	31.0	69.9	37.5	68.0	69.0	76.4	66.7	62.4		79.8	
Science											
2012	40.6	64.9	42.3	69.8	52.2	66.8	30.0	55.3	70.4	75.2	
2011	38.1	70.6	40.0	68.1	73.8	66.7	38.8	55.7		72.1	
Soc Studies											
2012	46.9	71.1	38.5	67.1	47.8	63.6	46.7	56.1	60.7	61.0	
2011	54.8	77.2	28.2	69.7	58.5	65.1	51.0	60.3		61.5	



Intown Academy

2013 CRCT Performance Demographics

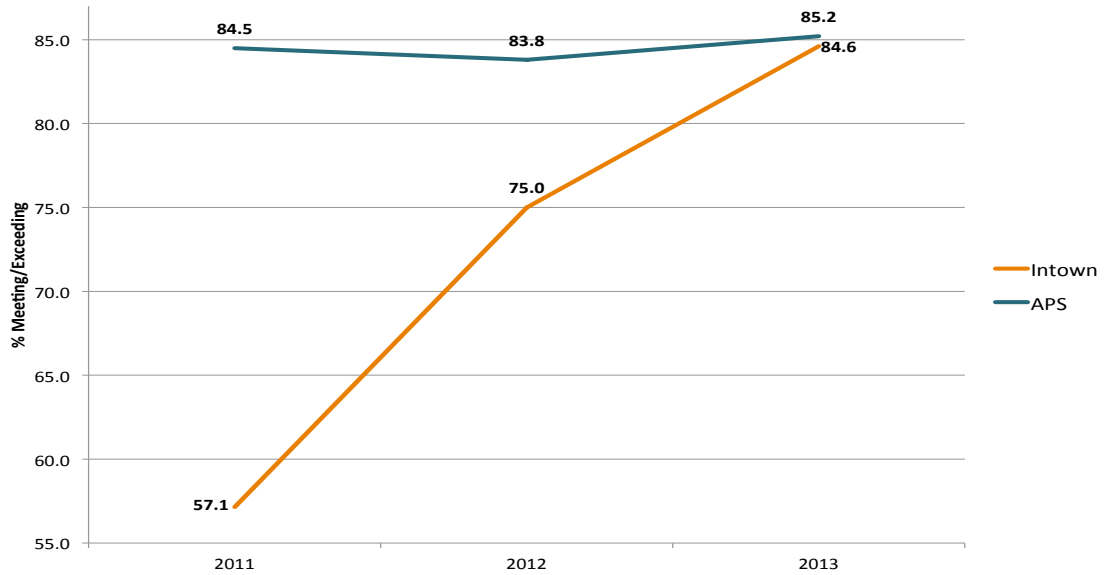
<i>Subject</i>	<i>Black (n=127) % Meets & Exceeds</i>	<i>Black (n=125) % Exceeds</i>
Reading	90	22
ELA	85	16
Math	52	6
Science	52	9
Social Studies	50	8

<i>Subject</i>	<i>Students w/ Disabilities (n=14) % Meets & Exceeds</i>	<i>Students w/o Disabilities (n=120) % Meets & Exceeds</i>	<i>Disabilities Gap % Meets & Exceeds</i>
Reading	n/a	n/a	n/a
ELA	n/a	n/a	n/a
Math	n/a	n/a	n/a
Science	25	54	-29
Social Studies	7	55	-48

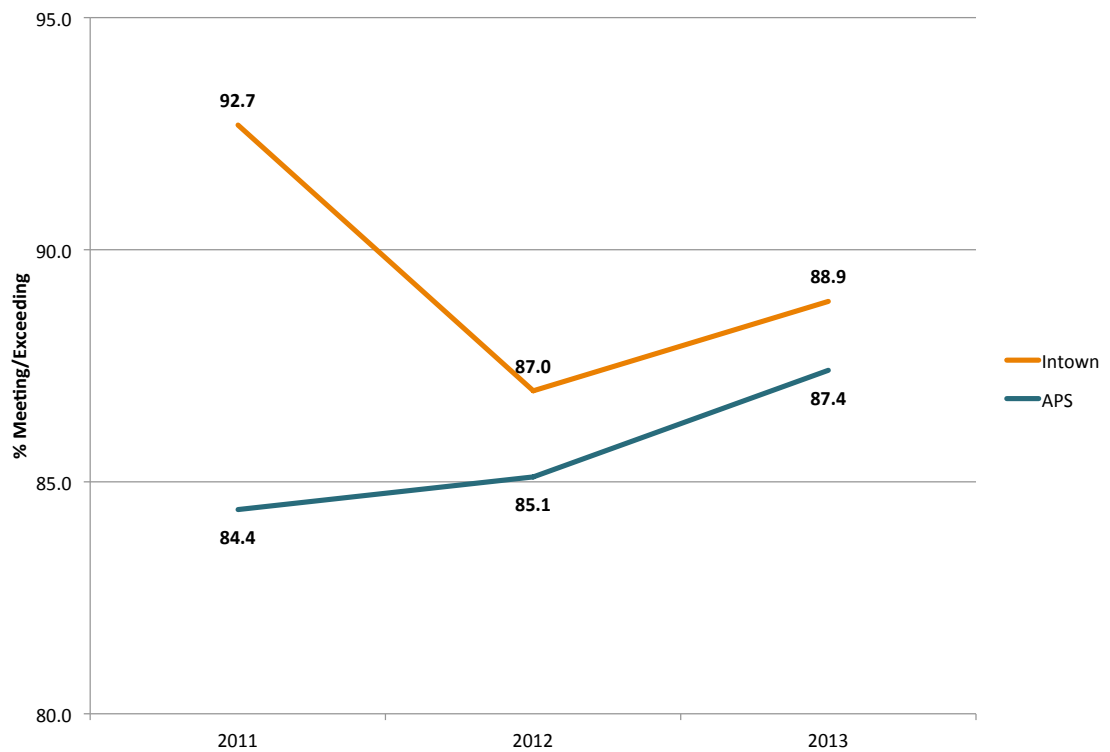
INTOWN
ACADEMY



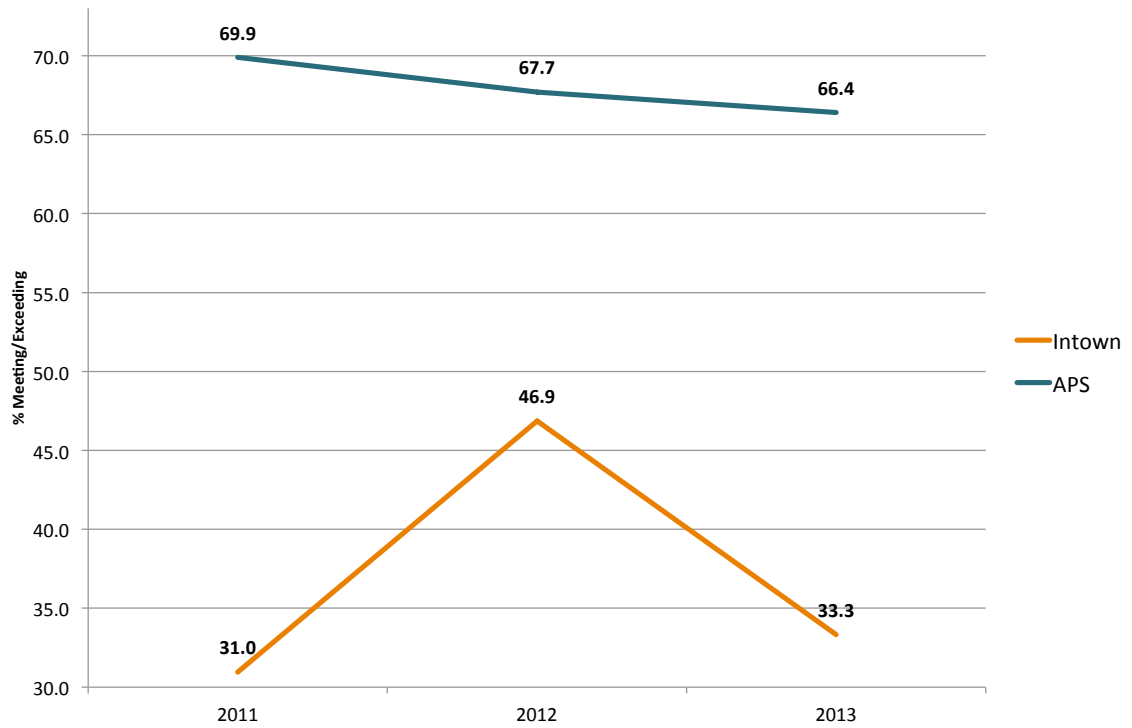
**Comparative Grade 3 CRCT Reading
(2011 - 2013)**



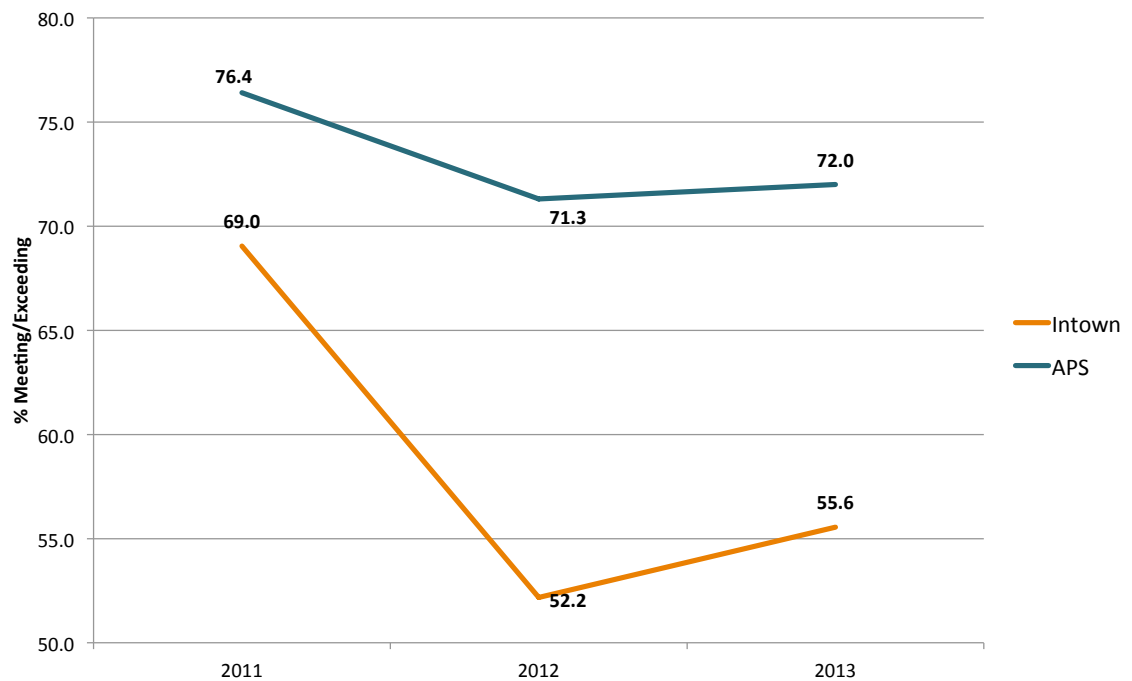
**Comparative Grade 5 CRCT Reading
(2011 - 2013)**



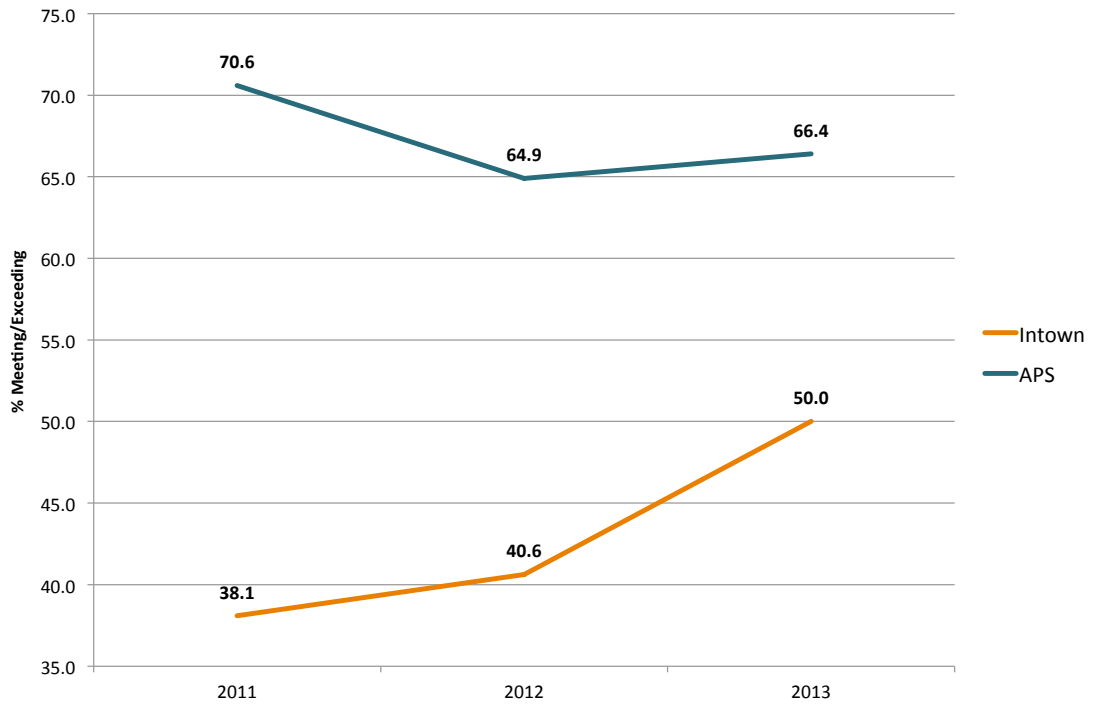
**Comparative Grade 3 CRCT Math
(2011 - 2013)**



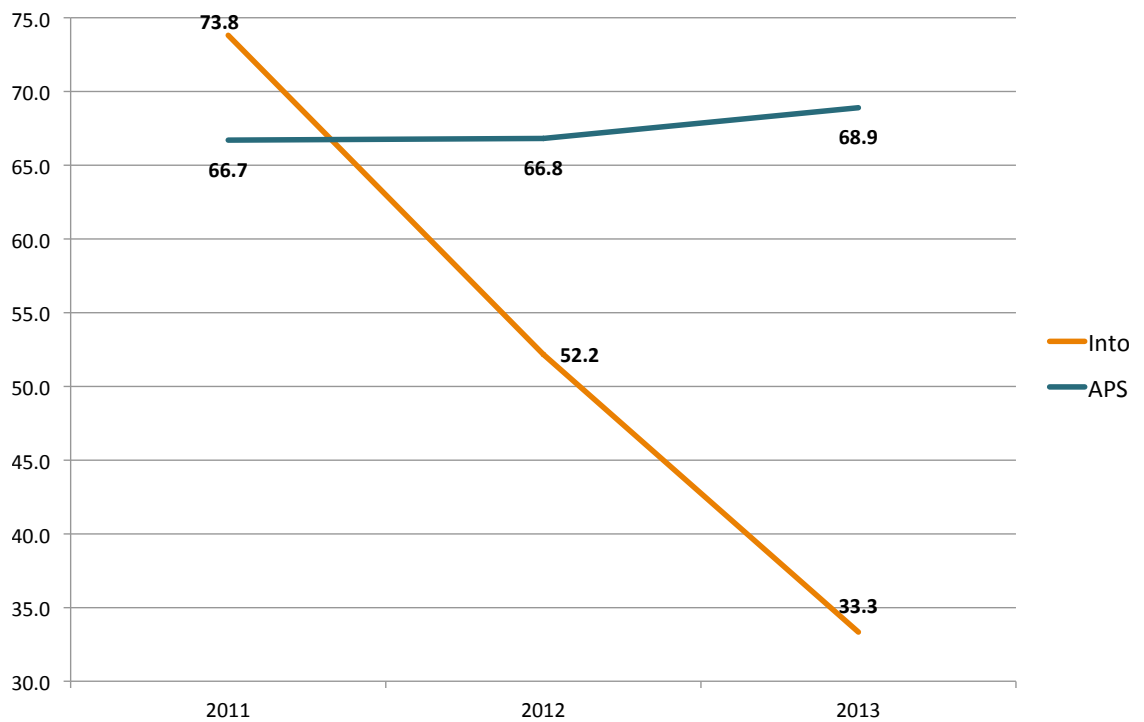
**Comparative Grade 5 CRCT Math
(2011 - 2013)**



Comparative Grade 3 CRCT Science
(2011 - 2013)



Comparative Grade 5 CRCT Science
(2011 - 2013)





Principal: Mr. Dean Leeper

Enrollment: 144

Serves: Kindergarten through 4th grade

The Kindezi School



Principal: Mr. Dean Leeper
Enrollment: 144
Grade Levels Served: Kindergarten through 4

APS Overall 2013 CRCT Ranking:

Reading: 6th out of 53
ELA: 8th out of 53
Math: 4th out of 53
Science: 14th out of 53
Social Studies: 10th out of 53

Enrollment Demographics:

Free & Reduced Lunch: 69.09%
Students with Disabilities: 7.5%
Asian: 0.6%
Black: 86.5%
Hispanic: 1.8%
Multi-Racial: 1.8%
Native American: 1.2%
White: 8%

The Kindezi School's mission is to create a nurturing, empowering, parent-integrated, and safe small class/small school environment conducive to optimal growth and self-realization. Through tutorial, differentiation, and student-centered approaches to learning, the school develops the leader, artist, and scholar in all students while instilling in each a love of learning and a sense of pride.

Kindezi also focuses on developing student leadership and creativity through approaches like project-based learning and arts-integration. In this way, Kindezi teaches social and emotional skills, innovation skills, team leadership, and other skills that are not visible on standardized tests but are nevertheless required for true success/freedom in life.

In its second year of operation, The Kindezi School achieved higher performance than the district on 10 of 10 CRCT assessments. The school also outperformed the state on 8 of the 10 CRCT assessments administered, in 2012.

Demographic performance gaps exist in math, science and social studies, for FRL students in meeting and exceeding standards.

Kindezi School CRCT Results (2011 - 2012)				
% Meeting & Exceeding				
	Grade 3		Grade 4	
	Kindezi	APS	Kindezi	APS
Reading				
2012	94.7	83.8	91.7	83.3
2011	100.0	84.5		80.5
ELA				
2012	100.0	83.5	100.0	85.1
2011	95.8	82.8		82.2
Math				
2012	84.2	67.7	75.0	66.7
2011	70.8	69.9		68.0
Science				
2012	68.4	64.9	95.8	69.8
2011	91.7	70.6		68.1
Soc Studies				
2012	89.5	71.1	95.8	67.1
2011	91.7	77.2		69.7

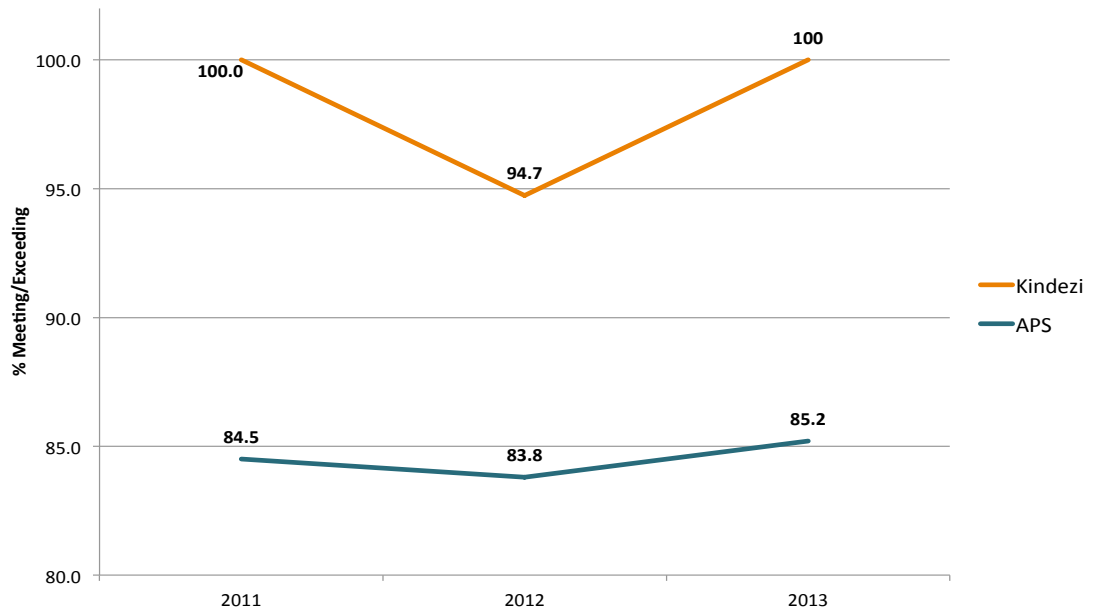


The Kindezi School 2013 CRCT Performance Demographics

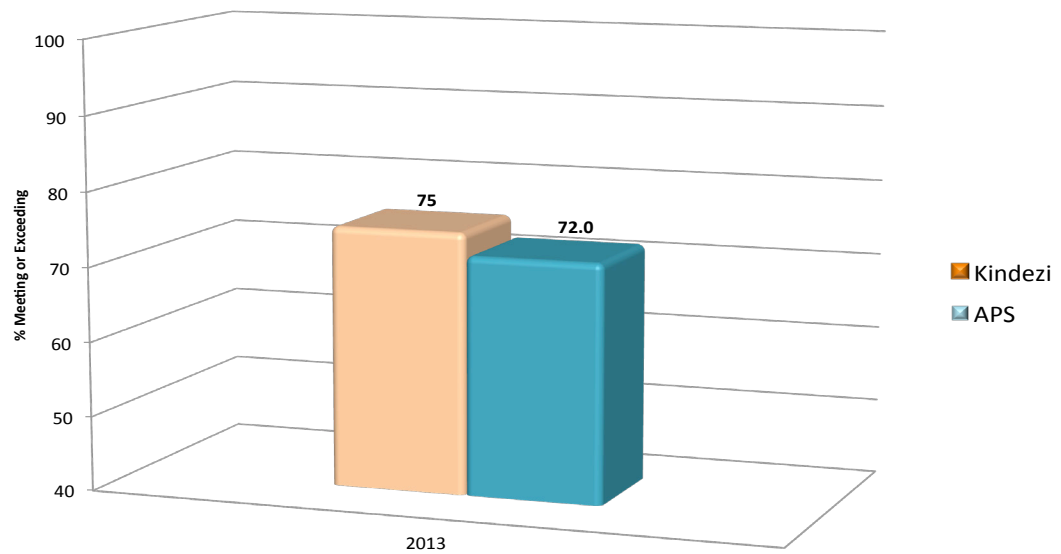
<i>Subject</i>	Black (n=64) <i>% Meets & Exceeds</i>	Black (n=64) <i>% Exceeds</i>
Reading	98	50
ELA	97	44
Math	97	46
Science	81	34
Social Studies	91	24



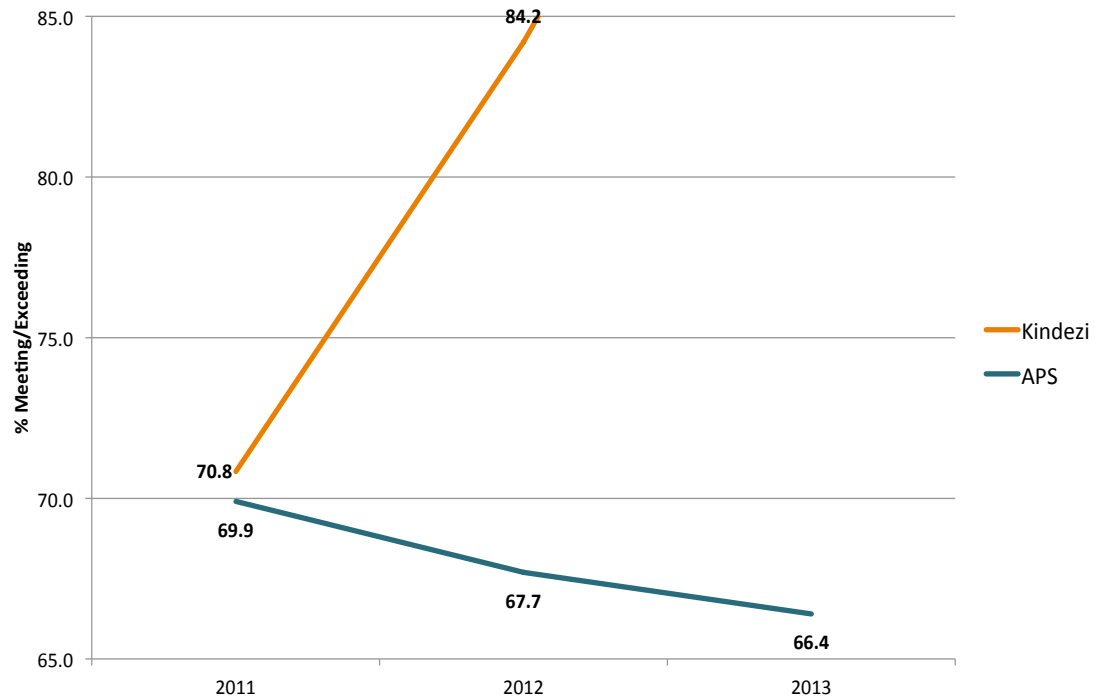
**Comparative Grade 3 CRCT Reading
(2011 - 2013)**



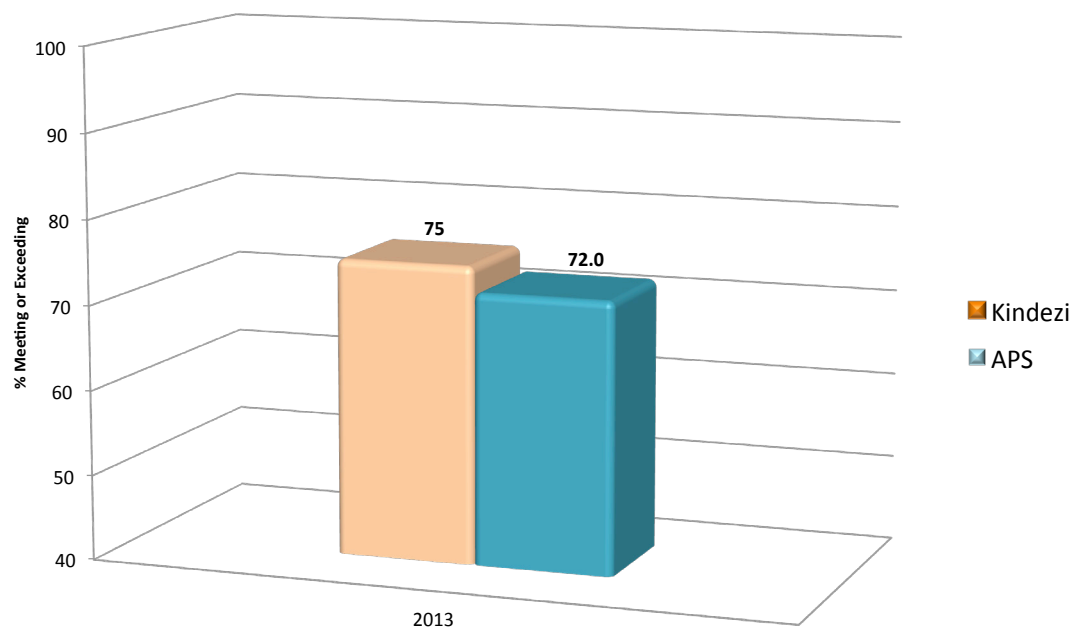
**Comparative Grade 4 CRCT Math
(2013)**



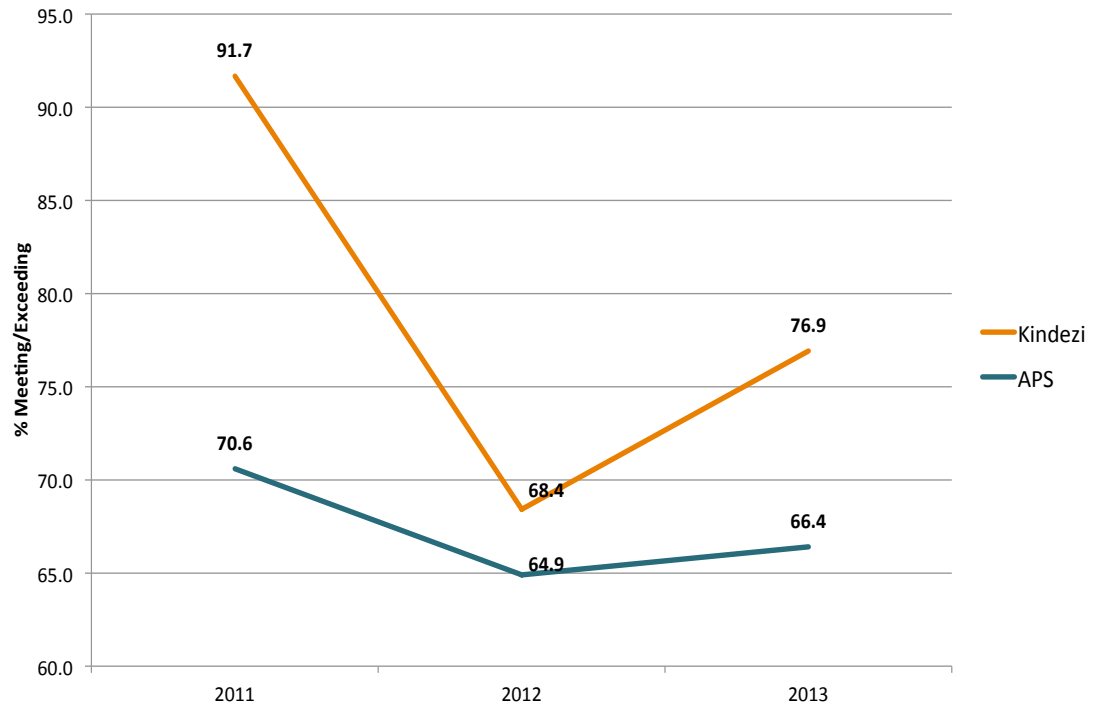
**Comparative Grade 3 CRCT Math
(2011 - 2013)**



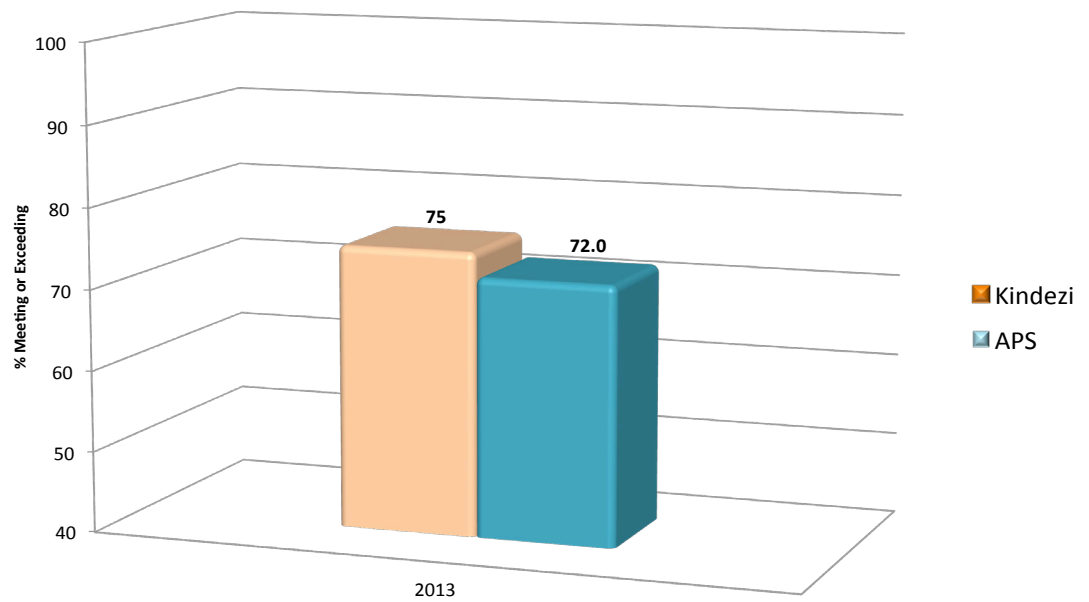
**Comparative Grade 4 CRCT Math
(2013)**



**Comparative Grade 3 CRCT Science
(2011 - 2013)**



**Comparative Grade 4 CRCT Science
(2013)**





Principal: Mr. Dave Howland

Enrollment: 195

Serves: 9th through 10th grade

KIPP Atlanta Collegiate Academy



Principal: Mr. David Howland

Enrollment: 195

Grade Levels Served: 9th - 10th

APS Overall 2013 EOCT Ranking:

Enrollment Demographics:

Free & Reduced Lunch: 76.86%

Students with Disabilities: 6.3%

Black: 97.2%

Hispanic: 1.2%

Native American: 0.4%

White: 0.8%

It is the mission of KIPP Atlanta Collegiate (KAC) to provide rigorous academic and character skills that ensure our students get to and through college with the resources to thrive in their future pursuits. KAC believes that the following core components empower students to define and develop their passions and determine their goals for the future: a rigorous academic curriculum, explicit teaching of problem-solving and critical thinking skills, peer and teacher collaboration, self-directed project based study, data-driven curriculum planning and a commitment to having a positive influence on their community and greater world.

During its first year of operation, KIPP Atlanta Collegiate students were administered the End of Course Tests for Math I and 9th Grade Literature. As can be seen in the table that follows, the school outperformed the district and the state on both assessments.



KIPP Atlanta Collegiate 2013 EOCT Results

	% Meeting and Exceeding		
	Collegiate	APS	GA
9th Grade Lit	94	74	86
Algebra	33	23	37
Geometry	86	Untested	75

Note: School opened Fall 2011

Indicates performance at or above the state



Principal: Mr. Ed Chang

Enrollment: 315

Serves: 5th through 8th grade

KIPP Strive Academy



Principal: Mr. Ed Chang
Enrollment: 315
Grade Levels Served: 5th through 8th

APS Overall 2013 CRCT Ranking:

Elementary:

Reading: 22nd out of 53
ELA: 12th out of 53
Math: 9th out of 53
Science: 10th out of 53
Social Studies: 11th out of 53

Middle:

Reading: 1st out of 23
ELA: 4th out of 23
Math: 2nd out of 23
Science: 1st out of 23
Social Studies: 2nd out of 23

Enrollment Demographics:

Free & Reduced Lunch: 71.59%
Students with Disabilities: 5.9%
Black: 97.9%
Hispanic: 0.9%
Multi-Racial: 1.2%

KIPP STRIVE Academy believes there are no shortcuts to success. Teachers, students and parents sign the KIPP Commitment to Excellence to ensure everyone understands the dedication and hard work it takes to obtain a college education. Students attend school each week day from 7:30 am until 5:00 pm. The school design represents a unique and innovative opportunity for a community in need of educational alternatives. Students aged 10-14 years are provided with four years of seamless education, emphasizing academic rigor, frequent assessment, data driven decisions and high expectations.

KIPP STRIVE Academy creates and maintains a small school environment in the middle school program. It aims to individualize instruction for those that require additional support and ultimately increase student achievement. The school expects its middle school students to develop a solid foundation of skills and be prepared for the rigors of a college preparatory high school curriculum. KIPP Strive Academy outperformed APS and the State on 15 out of 15 of the CRCT assessments administered in 2012. Of particular note, is the school's performance in mathematics which was between 6.1 (grade 5) and 9.4 (grade 6) percentage points higher than the State. In science, performance ranged between 6.4 (grade 5) and 14.1 (grade 7) percentage points higher than the State.

Demographic gap analysis identified gaps for students with disabilities who have not met standards. In addition, the performance of students eligible for FRL lagged their counterparts' in the percentage of students exceeding standards.

KIPP STRIVE CRCT Results (2010 - 2013)

% Meeting & Exceeding

	Grade 5		Grade 6		Grade 7		Grade 8	
	STRIVE	APS	STRIVE	APS	STRIVE	APS	STRIVE	APS
Reading								
2013	89.2	87.4	98.8	92.7	100.0	92.2	100.0	94.4
2012	94.3	85.1	100.0	92.2	100.0	90.2		92.1
2011	88.2	84.4	96.6	90.8	-	83.8	-	91.9
2010	90.5	80.8	-	85.6	-	82.5	-	89.8
ELA								
2013	93.5	89.7	97.6	87.8	95.1	91.1	98.6	91.5
2012	94.4	89.8	96.5	88.3	98.7	91.0		92.9
2011	90.8	88.2	96.7	88.9	-	91.0	-	88.8
2010	91.7	87.7		89.7	-	88.8	-	88.4
Math								
2013	92.3	72.0	90.4	72.0	95.1	83.3	94.5	70.2
2012	89.8	71.3	89.3	65.2	97.4	82.1		59.3
2011	90.6	76.4	82.0	62.4	-	79.8	-	65.9
2010	82.1	69.1		62.3	-	76.4	-	62.8
Science								
2013	87.2	68.9	90.6	58.1	92.8	75.1	91.8	59.8
2012	84.4	66.8	84.9	55.3	98.7	75.2		53.8
2011	87.5	66.7	85.6	55.7	-	72.1	-	51.1
2010	72.6	68.6		55.4	-	70.4	-	52.4
Soc Studies								
2013	91.5	69.8	94.1	62.5	96.4	71.3	97.3	63.4
2012	88.9	63.6	93.0	56.1	98.7	61.0		58.7
2011	85.2	65.1	91.1	60.3	-	61.5	-	60.8
2010	75.0	64.0		50.4	-	54.3	-	55.3



KIPP Strive Academy

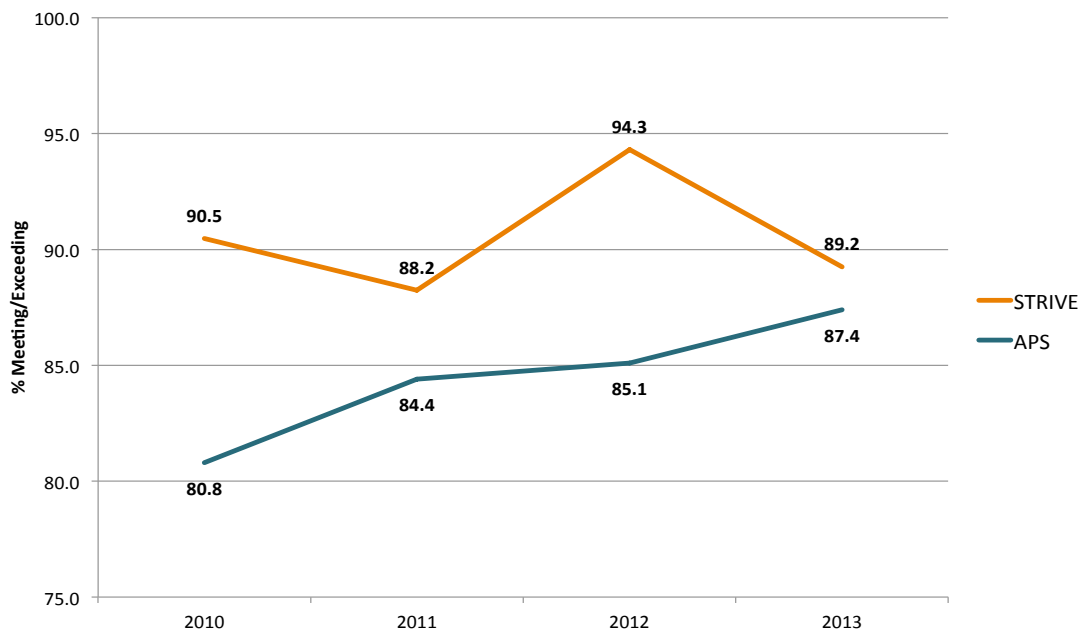
2013 CRCT Performance Demographic

<i>Subject</i>	<i>Black (n=324)</i> <i>% Meets & Exceeds</i>	<i>Black (n=324)</i> <i>% Exceeds</i>
Reading	97	45
ELA	96	52
Math	93	41
Science	90	44
Social Studies	95	57

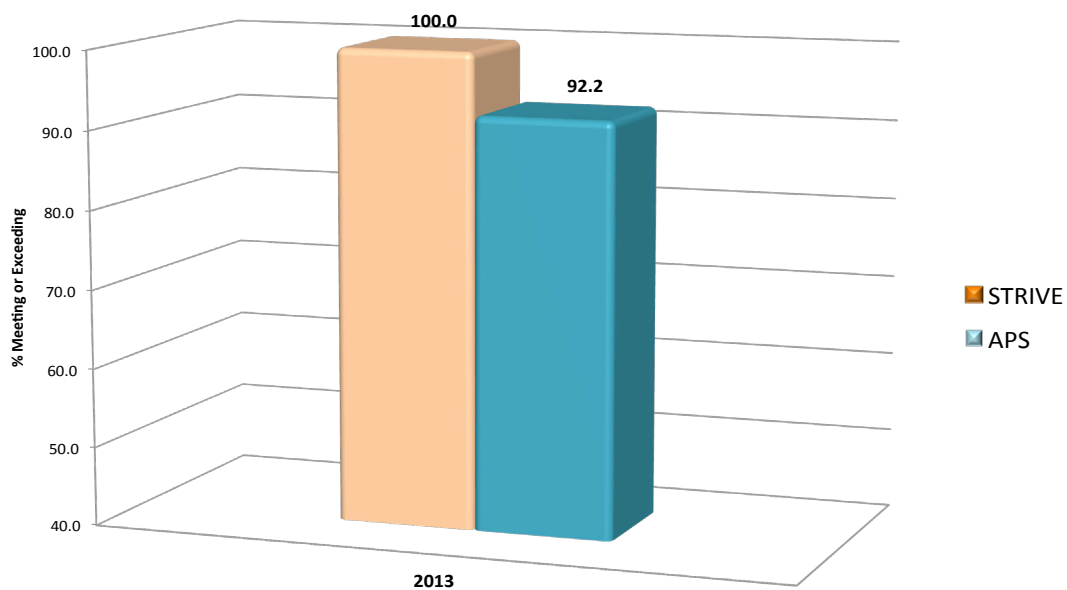
<i>Subject</i>	<i>Students w/ Disabilities</i> <i>(n=24)</i> <i>% Meets & Exceeds</i>	<i>Students w/o Disabilities</i> <i>(n=311)</i> <i>% Meets & Exceeds</i>	<i>Disabilities Gap</i> <i>% Meets & Exceeds</i>
Reading	89	97	-8
ELA	84	97	-13
Math	76	94	-18
Science	58	93	-35
Social Studies	71	97	-26



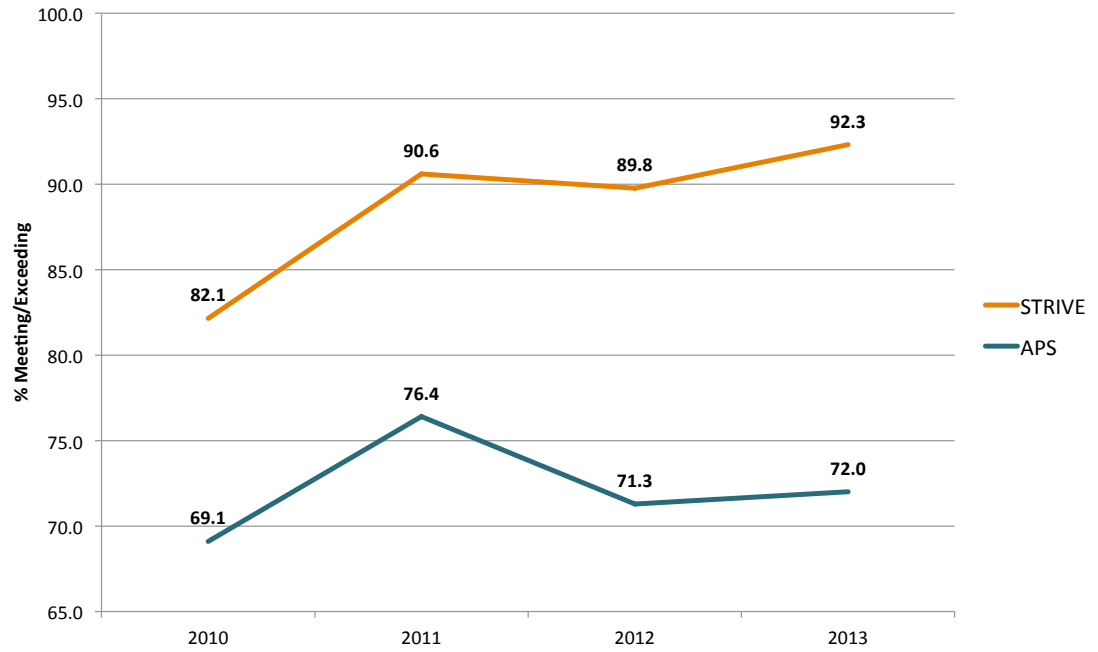
**Comparative Grade 5 CRCT Reading
(2011 - 2013)**



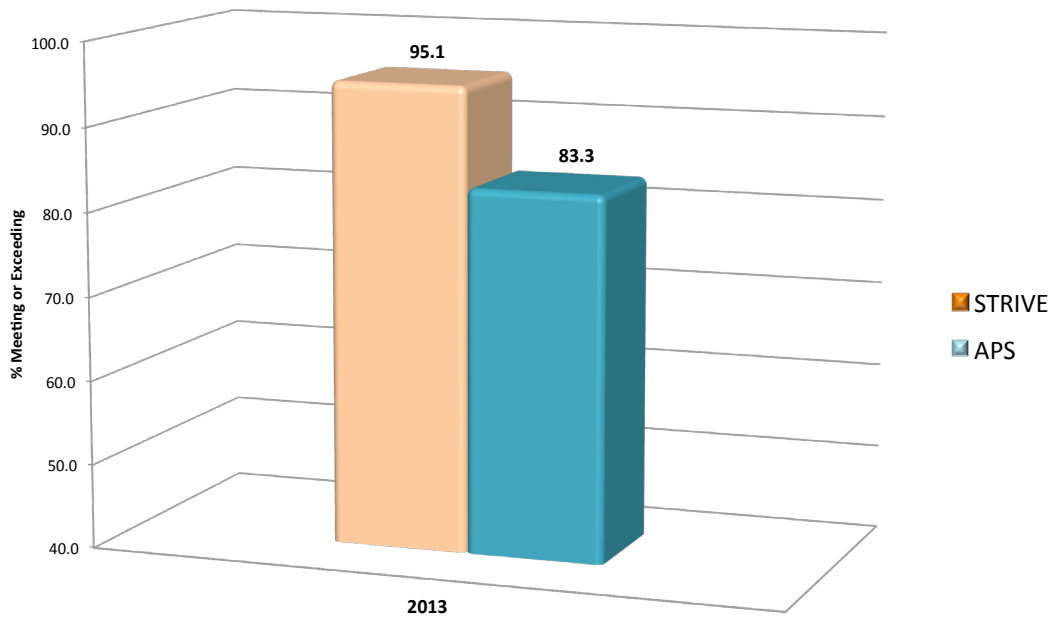
**Comparative Grade 7 CRCT Reading
(2013)**



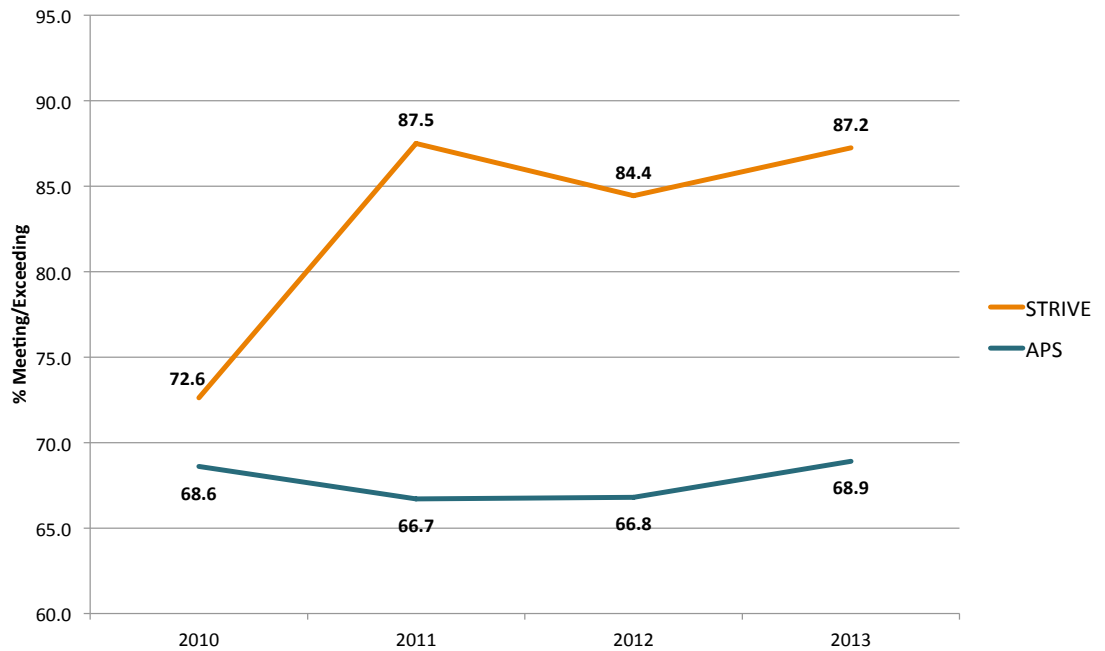
**Comparative Grade 5 CRCT Math
(2011 - 2013)**



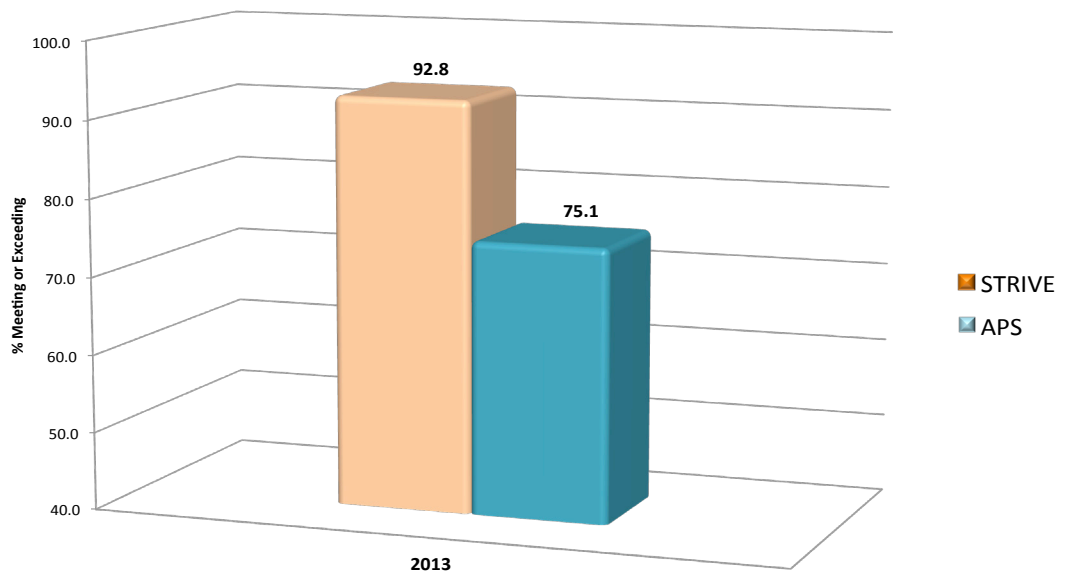
**Comparative Grade 7 CRCT Math
(2013)**



**Comparative Grade 5 CRCT Science
(2011 - 2013)**



**Comparative Grade 7 CRCT Science
(2013)**





Principal: Mr. Steve Jones

Enrollment: 240 Serves: 5th through 6th grade

KIPP Vision Academy



Principal: Mr. Steve Jones

Enrollment: 240

Grade Levels Served: 5th and 6th

APS Overall 2013 CRCT Ranking:

Elementary:

Reading: 27th out of 53

ELA: 17th out of 53

Math: 18th out of 53

Science: 11th out of 53

Social Studies: 17th out of 53

Middle:

Reading: 10th out of 23

ELA: 8th out of 23

Math: 7th out of 23

Science: 6th out of 23

Social Studies: 6th out of 23

Enrollment Demographics:

Free & Reduced Lunch: 94.09%

Students with Disabilities: 4.1%

Black: 96.3 %

Hispanic: 2.9%

Multi-Racial: 0.4%

Native American: 0.4%

KIPP Vision Academy cultivates its scholars' inherent genius in order for them to be the rebuilders of their communities and the socially responsible leaders of the future. Through interaction with mentors, and an engagement with a rigorous curriculum, students will be equipped with the tools to determine what tomorrow will look like.

It is the mission of KIPP Vision Academy to inspire students to develop a positive vision for their future in order to become socially and environmentally responsible students who are highly successful in high school, college and beyond.

KIPP Vision's Grade 5 performance dropped sharply, between 2011 (its opening year) and 2012, falling below the district's on 4 of the 5 subject assessments. However, Grade 6 performance was stronger than the district in all subject areas, most notably in mathematics, science and social studies.

KIPP Vision CRCT Results (2011 - 2013) % Meeting & Exceeding

	Grade 5		Grade 6	
	Vision	APS	Vision	APS
Reading				
2013	85.7	87.4	95.3	92.7
2012	77.5	85.1	98.8	92.2
2011	85.2	84.4	-	90.8
ELA				
2013	90.5	78.7	91.9	87.8
2012	80.2	89.8	91.8	88.3
2011	77.8	88.2	-	88.9
Math				
2013	76.2	66.4	84.9	72.0
2012	64.2	71.3	86.9	65.2
2011	72.8	76.4	-	62.4
Science				
2013	85.9	66.4	75.9	58.1
2012	50.6	66.8	74.4	55.3
2011	58.8	66.7	-	55.7
Soc Studies				
2013	80.0	74.9	70.1	62.5
2012	66.7	63.6	87.2	56.1
2011	76.3	65.1	-	60.3

School opened Fall 2011

KIPP Vision Academy

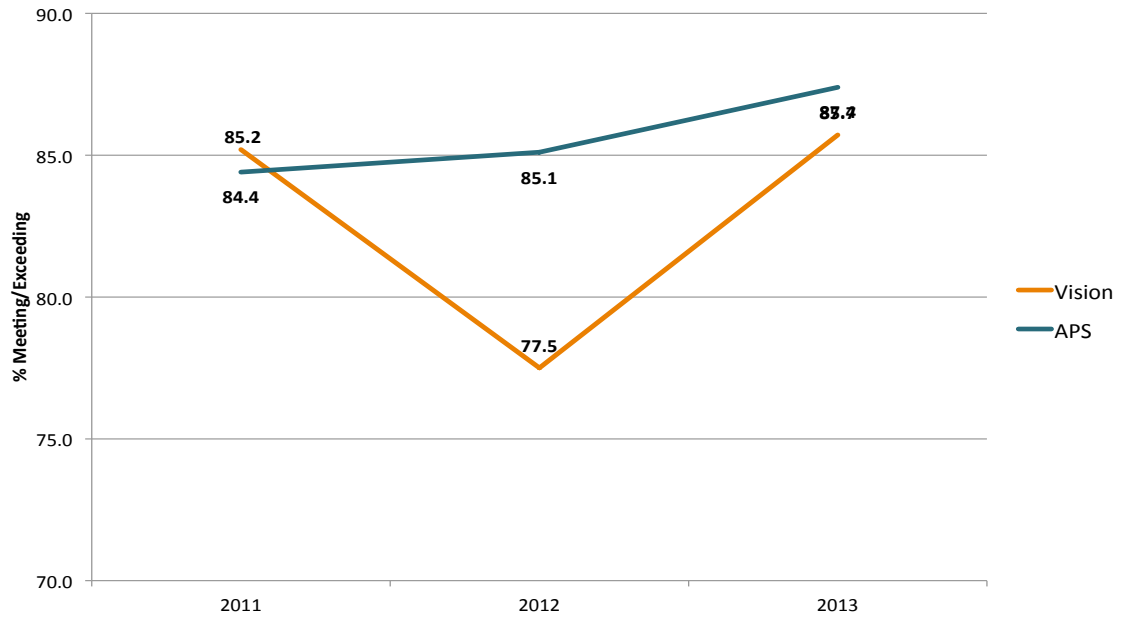
2013 CRCT Performance Demographic

<i>Subject</i>	<i>Black (n=231)</i> <i>% Meets & Exceeds</i>	<i>Black</i> <i>% Exceeds</i>
Reading	94	27
ELA	94	30
Math	86	21
Science	85	31
Social Studies	16	42

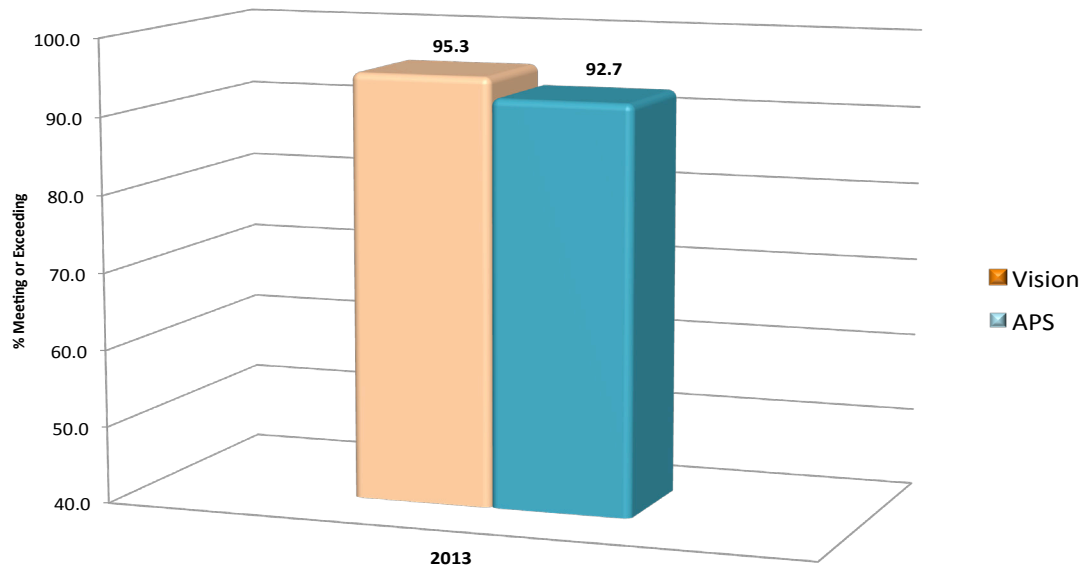
<i>Subject</i>	<i>Students w/ Disabilities</i> <i>(n=18)</i> <i>% Meets & Exceeds</i>	<i>Students w/o Disabilities</i> <i>(n=306)</i> <i>% Meets & Exceeds</i>	<i>Disabilities Gap</i> <i>% Meets & Exceeds</i>
Reading	90	94	-4
ELA	80	95	-15
Math	70	86	-16
Science	57	87	-30
Social Studies	50	85	-35



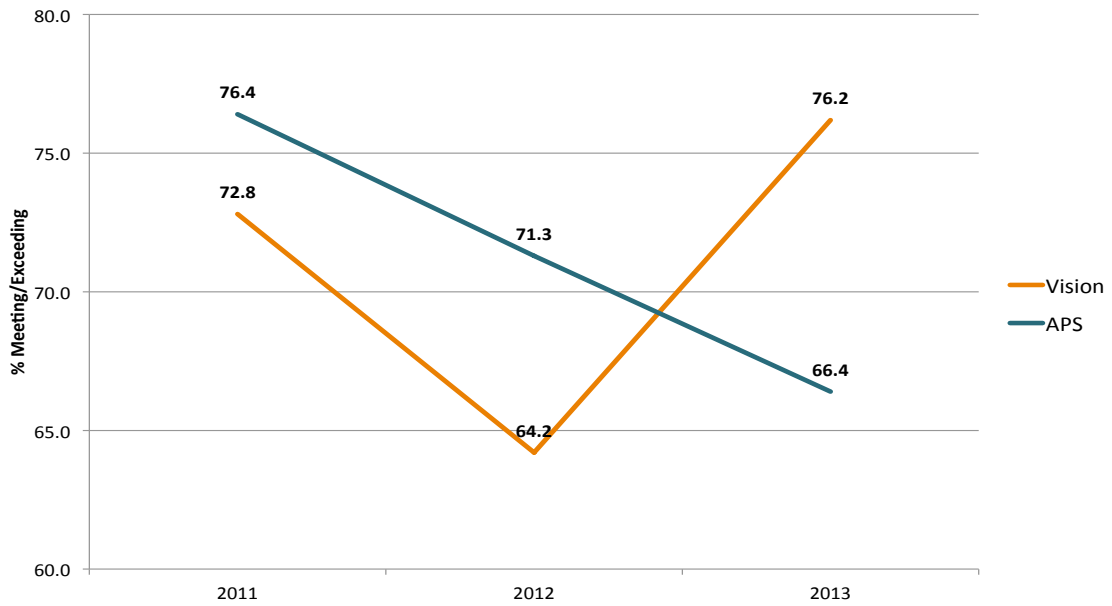
**Comparative Grade 5 CRCT Reading
(2011 - 2013)**



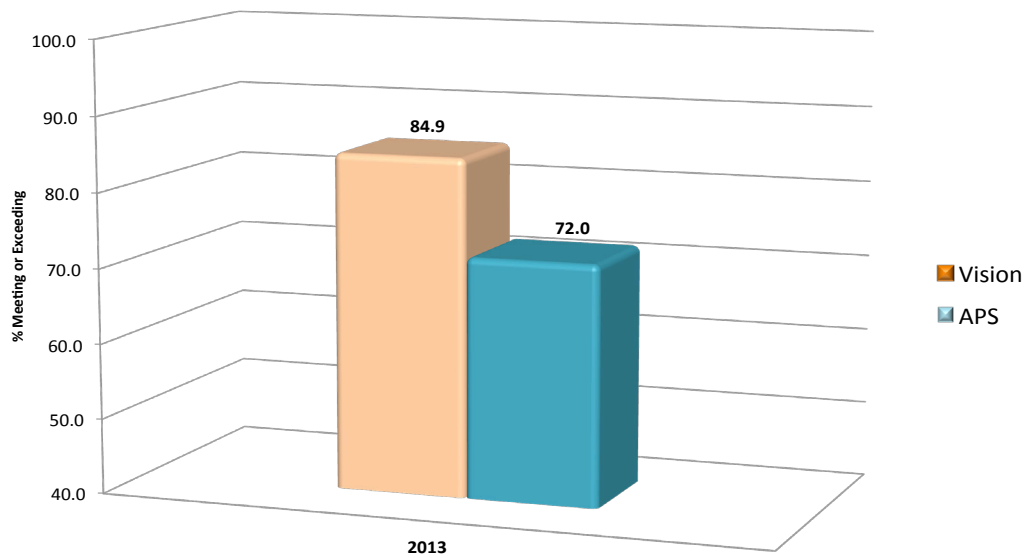
**Comparative Grade 6 CRCT Reading
(2013)**



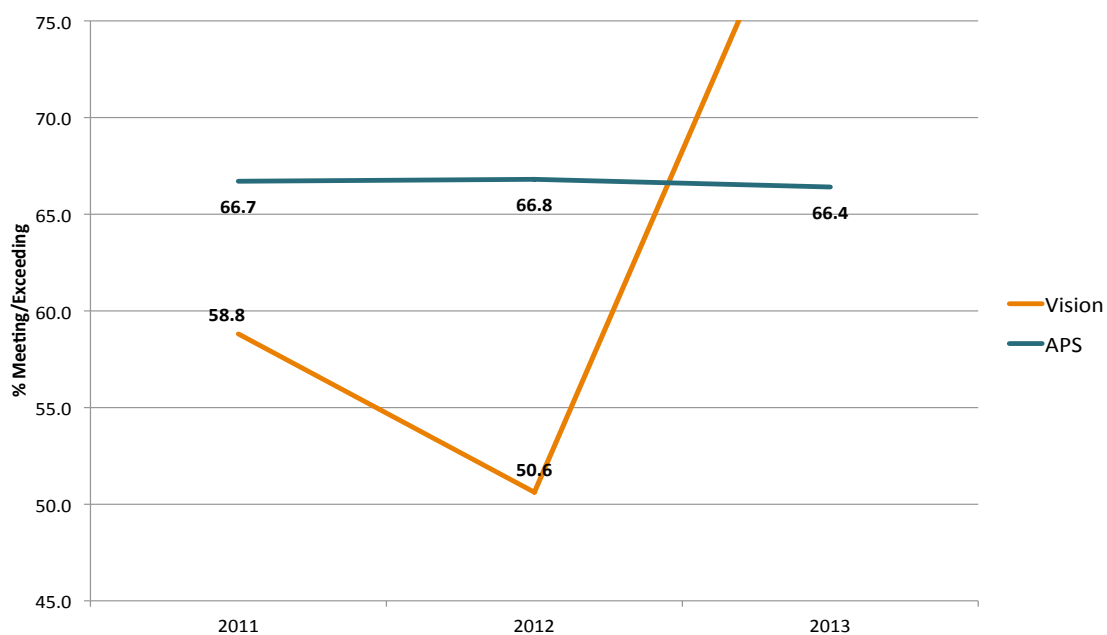
**Comparative Grade 5 CRCT Math
(2011 - 2013)**



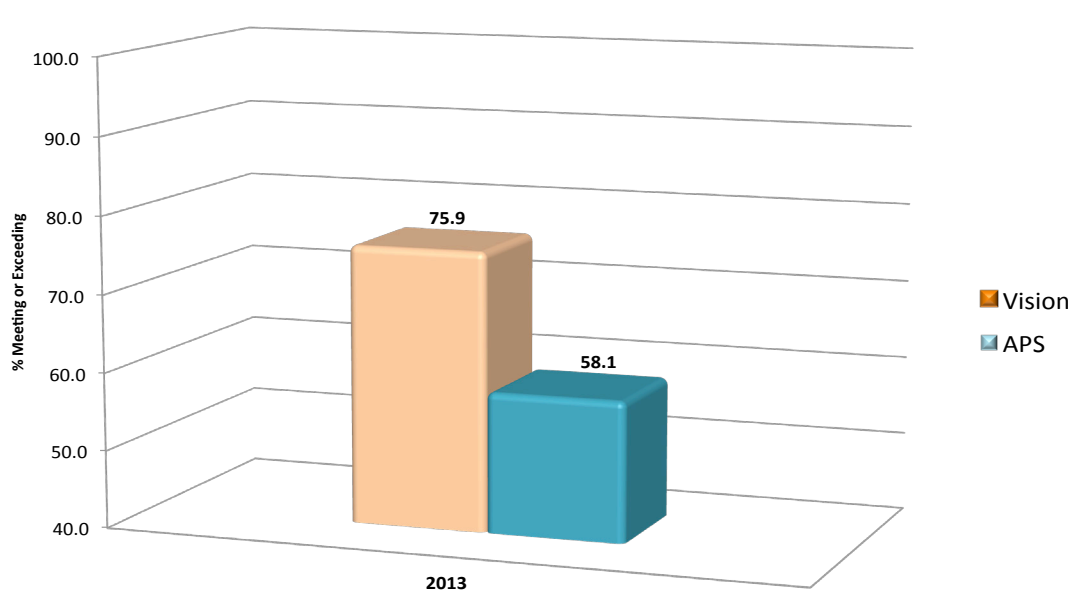
**Comparative Grade 6 CRCT Math
(2013)**



**Comparative Grade 5 CRCT Science
(2011 - 2013)**



**Comparative Grade 6 CRCT Science
(2013)**





Principal: Mr. Dwight Ho-Sang

Enrollment: 305 Serves: 5th through 8th Grade

KIPP WAYS Academy



Principal: Mr. Dwight Ho-Sang

Enrollment: 305

Grade Levels Served: Grades 5 through 8

APS Overall 2013 CRCT Ranking:

Elementary:

Reading: 11th out of 53

ELA: 11th out of 53

Math: 8th out of 53

Science: 19th out of 53

Social Studies: 14th out of 53

Middle:

Reading: 4th out of 23

ELA: 6th out of 23

Math: 5th out of 23

Science: 3rd out of 23

Social Studies: 3rd out of 23

Enrollment Demographics:

Free & Reduced Lunch: 83.4%

Students with Disabilities: 4.7%

Black: 98.8 %

Hispanic: 0.3%

Multi-Racial: 0.6%

White: 0.3%

KIPP West Atlanta Young Scholars (WAYS) Academy offers an academically rigorous and structured learning environment that focuses on preparing students for competitive high schools and colleges. With a primary focus on scholarship, students at KIPP WAYS Academy are referred to and treated as “scholars,” which sets a clear tone at the school that learning is revered and will not be compromised in any way.

It is the mission of WAYS Academy to prepare students for top quality high schools, colleges and the competitive world beyond, by instilling in each student a commitment to scholarship, teamwork, integrity, and other “WAYS to success”.

In 2012, KIPP Ways achieved higher performance than the district on 15 of the 20 administered CRCT assessments. Grade 5 performance declined from 2011, in all subjects, reflecting lower percentages of students meeting standards than the district. Performance for Grades 6, 7 and 8 showed increases on most subject assessments. WAYS outperformed the State on the math, science and social studies CRCT for Grades 6, 7 and 8 as well. Demographic data identify gaps for students with disabilities in science and social studies.

KIPP WAYS CRCT Results (2009 - 2013)								
% Meeting & Exceeding								
	Grade 5		Grade 6		Grade 7		Grade 8	
	WAYS	APS	WAYS	APS	WAYS	APS	WAYS	APS
Reading								
2013	96.3	87.4	97.6	92.7	97.6	92.2	100.0	94.4
2012	82.6	85.1	97.5	92.2	97.4	90.2	100.0	92.1
2011	94.9	84.4	94.0	90.8	96.6	83.8	98.6	91.9
2010	94.0	80.8	97.8	85.6	97.1	82.5	96.8	89.8
2009	94.4	85.9	96.6	85.0	94.1	81.9	100.0	87.9
ELA								
2013	93.8	89.7	95.2	87.8	97.6	91.1	97.3	91.5
2012	85.5	89.8	97.5	88.3	97.4	91.0	100.0	92.9
2011	96.2	88.2	92.8	88.9	98.9	91.0	100.0	88.8
2010	94.0	87.7	97.8	89.7	100.0	88.8	96.8	88.4
2009	97.8	92.2	98.9	88.8	95.6	84.5	96.8	89.8
Math								
2013	93.8	72.0	84.7	72.0	95.1	83.3	89.0	70.2
2012	77.9	71.3	87.2	65.2	97.3	82.1	87.7	59.3
2011	83.3	76.4	63.9	62.4	90.8	79.8	95.8	65.9
2010	54.2	69.1	79.1	62.3	98.6	76.4	98.4	62.8
2009	82.0	77.0	88.6	65.4	95.6	75.1	93.7	65.0
Science								
2013	69.5	68.9	86.0	58.1	92.7	75.1	85.1	59.8
2012	52.1	66.8	86.6	55.3	96.1	75.2	81.9	53.8
2011	78.5	66.7	80.7	55.7	92.0	72.1	82.2	51.1
2010	75.9	68.6	87.9	55.4	95.7	70.4	88.7	52.4
2009	79.8	74.4	83.0	55.6	86.8	61.5	76.2	49.5
Soc Studies								
2013	84.1	69.8	96.5	62.5	93.9	71.3	93.2	63.4
2012	57.7	63.6	84.1	56.1	89.5	61.0	85.5	58.7
2011	87.3	65.1	81.9	60.3	89.7	61.5	91.8	60.8
2010	84.3	64.0	86.8	50.4	98.6	54.3	90.3	55.3
2009	80.9	65.5	N/A	N/A	N/A	N/A	81.0	51.1

Source: CRCT Georgia Department of Education School and District Summary Reports

KIPP WAYS Academy

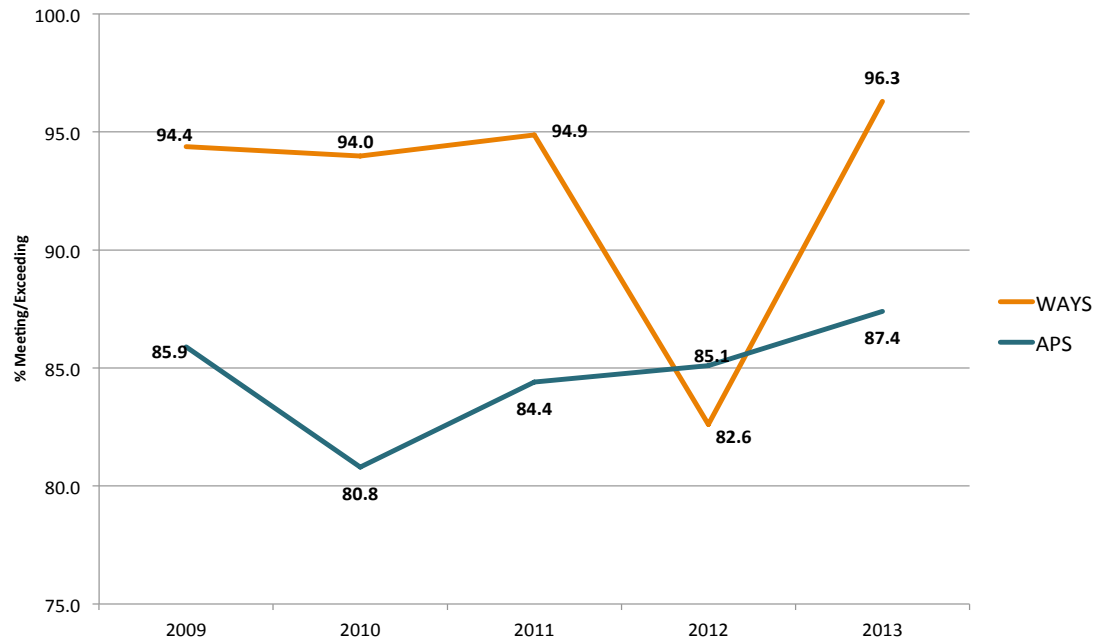
2013 CRCT Performance Demographic

Subject	Black (n=320)	Black
	% Meets & Exceeds	% Exceeds
Reading	98	37
ELA	96	38
Math	91	33
Science	83	25
Social Studies	92	49

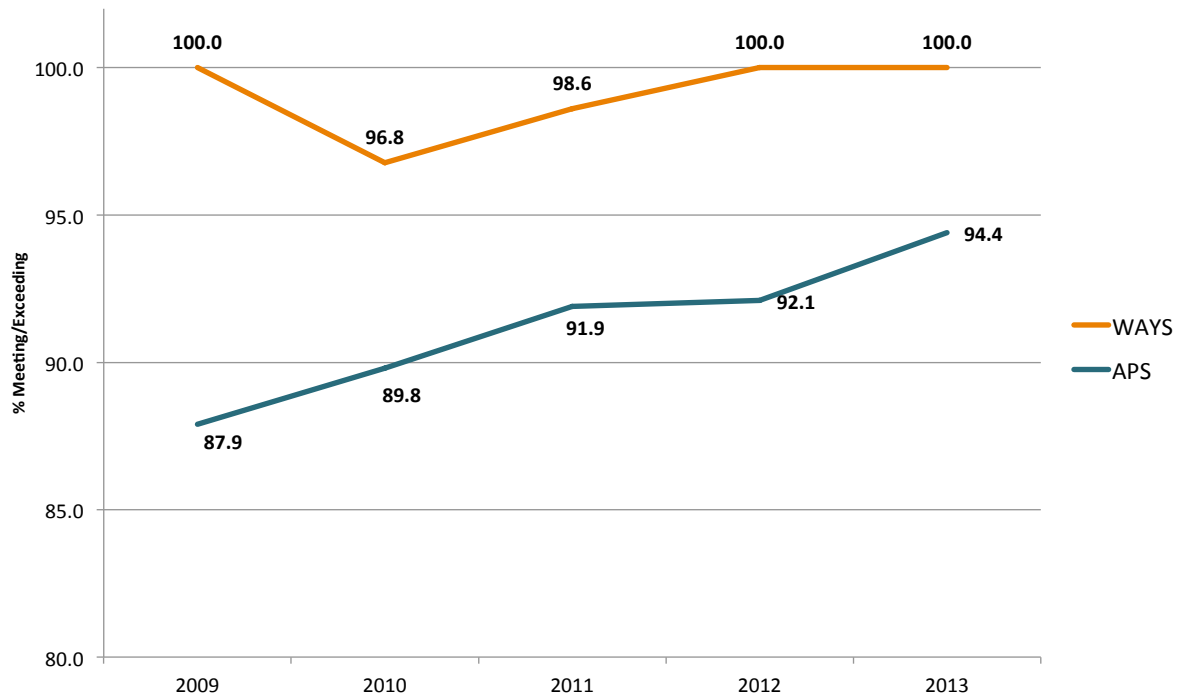
Subject	Students w/ Disabilities (n=18)		Students w/o Disabilities (n=306)		Disabilities Gap	
	% Meets & Exceeds	% Exceeds	% Meets & Exceeds	% Exceeds	% Meets & Exceeds	% Exceeds
Reading	100	25	98	38	2	-13
ELA	93	7	96	40	-3	-33
Math	86	7	91	34	-5	-27
Science	61	11	85	27	-24	-16
Social Studies	61	28	94	50	-33	-22



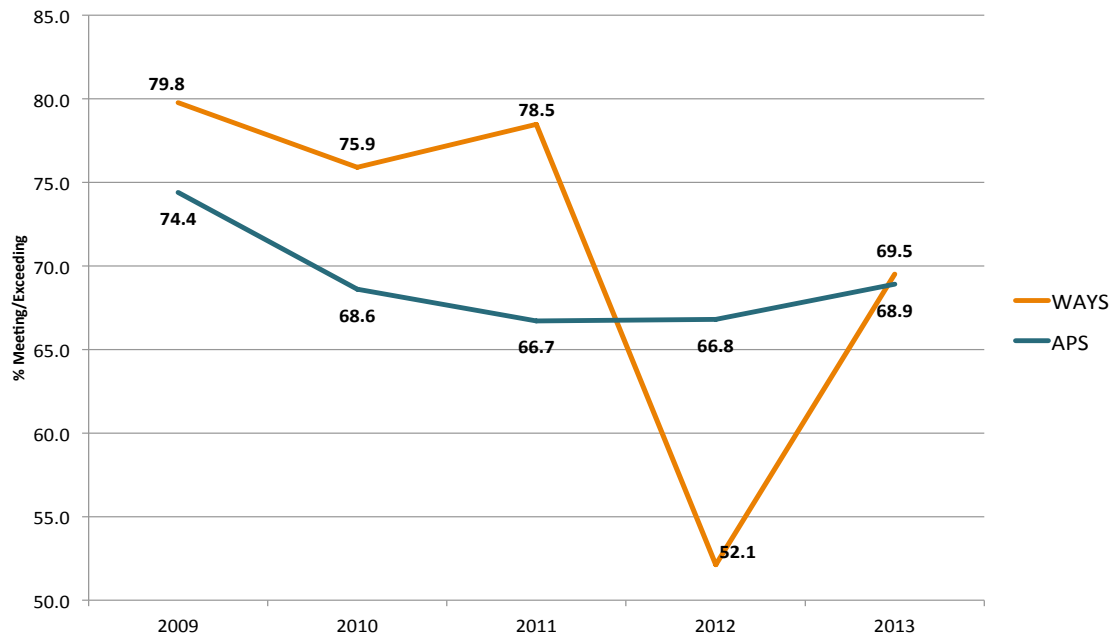
**Comparative Grade 5 CRCT Reading
(2009 - 2013)**



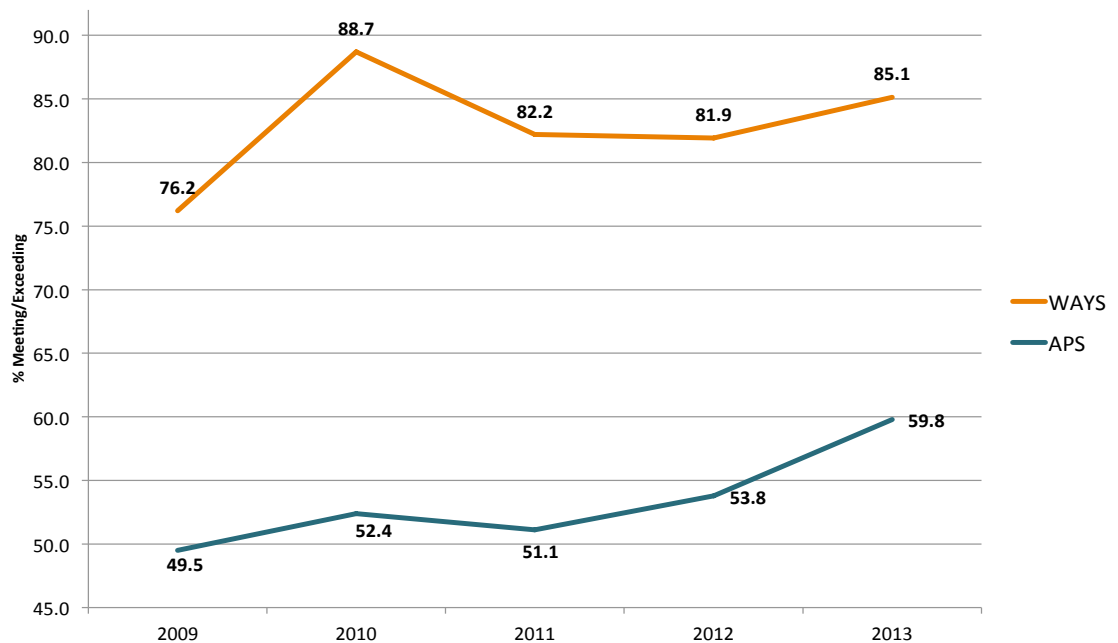
**Comparative Grade 8 CRCT Reading
(2009 - 2013)**



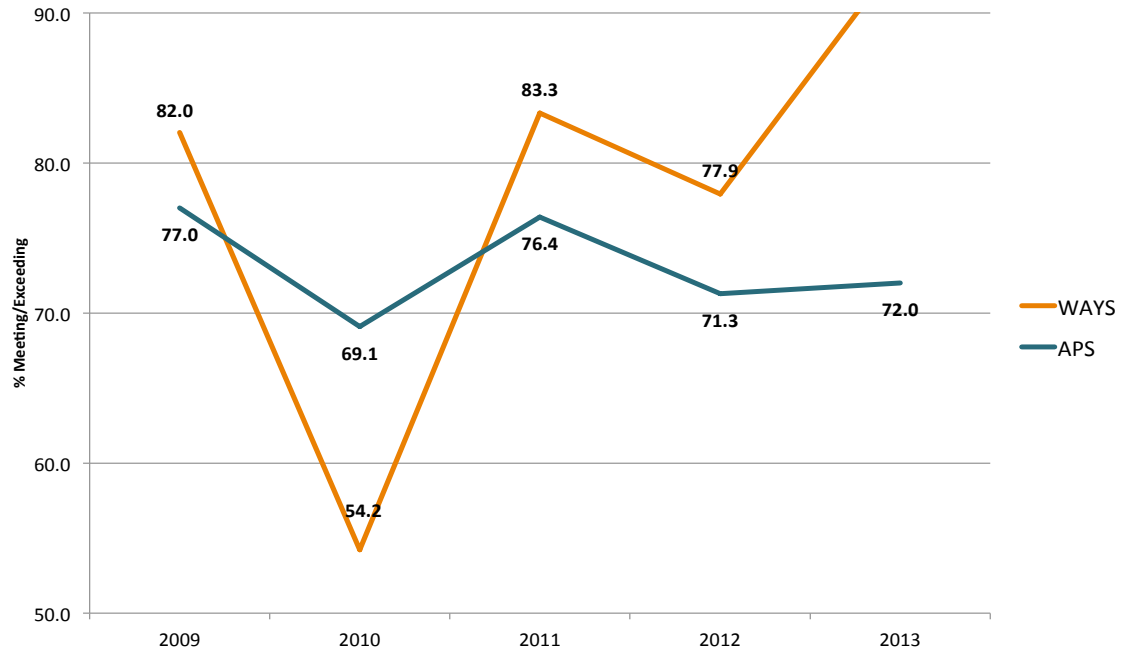
**Comparative Grade 5 CRCT Science
(2009 - 2013)**



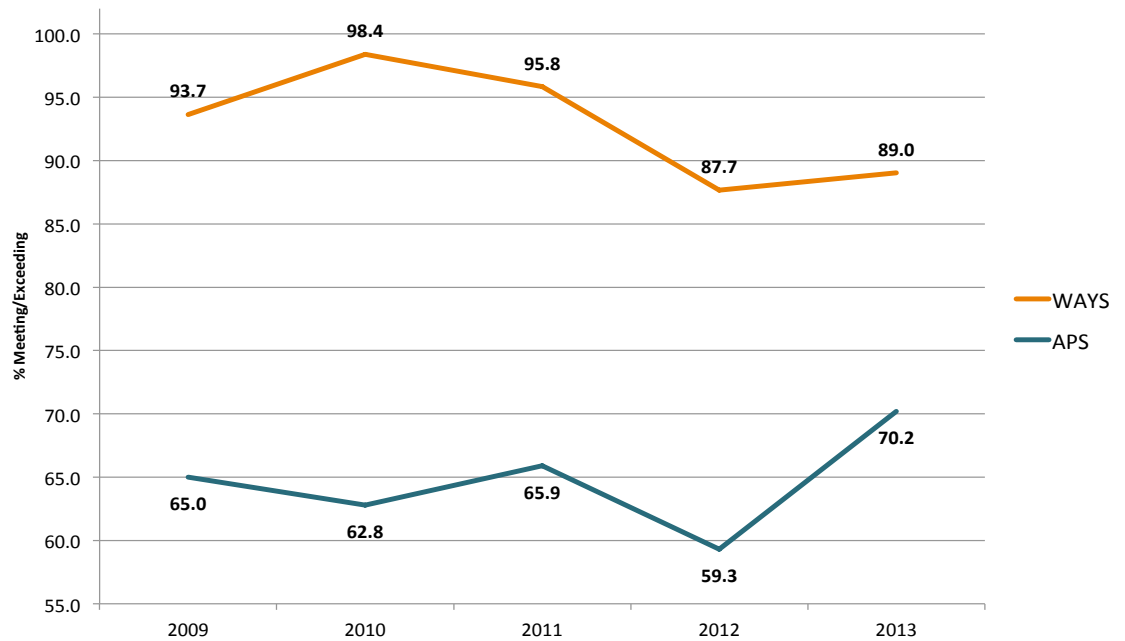
**Comparative Grade 8 CRCT Science
(2010 - 2013)**



**Comparative Grade 5 CRCT Math
(2009 - 2013)**



**Comparative Grade 8 CRCT Math
(2009 - 2013)**





Principal: Mr. Christopher Clemons

Enrollment: 87 Serves: 6th Grade

Latin Academy



Principal: Mr. Christopher Clemons

Enrollment: 87

Grade Levels Served: 6th

APS Overall 2013 CRCT Ranking:

Reading: 7th out of 53

ELA: 12th out of 53

Math: 12th out of 53

Science: 42th out of 53

Social Studies: 28th out of 53

Enrollment Demographics:

Free & Reduced Lunch: 93.48%

Students with Disabilities: 11%

Asian/Pacific: 0%

Black: 100%

Hispanic: 0%

Multi-Racial: 0%

White: 0%

Latin Academy CRCT Results 2013 % Meeting & Exceeding		
Grade 6		
	Latin	APS
Reading		
2013	97.8	85.2
ELA		
2013	91.3	78.7
Math		
2013	79.1	66.4
Science		
2013	51.1	66.4
Soc Studies		
2013	59.8	74.9



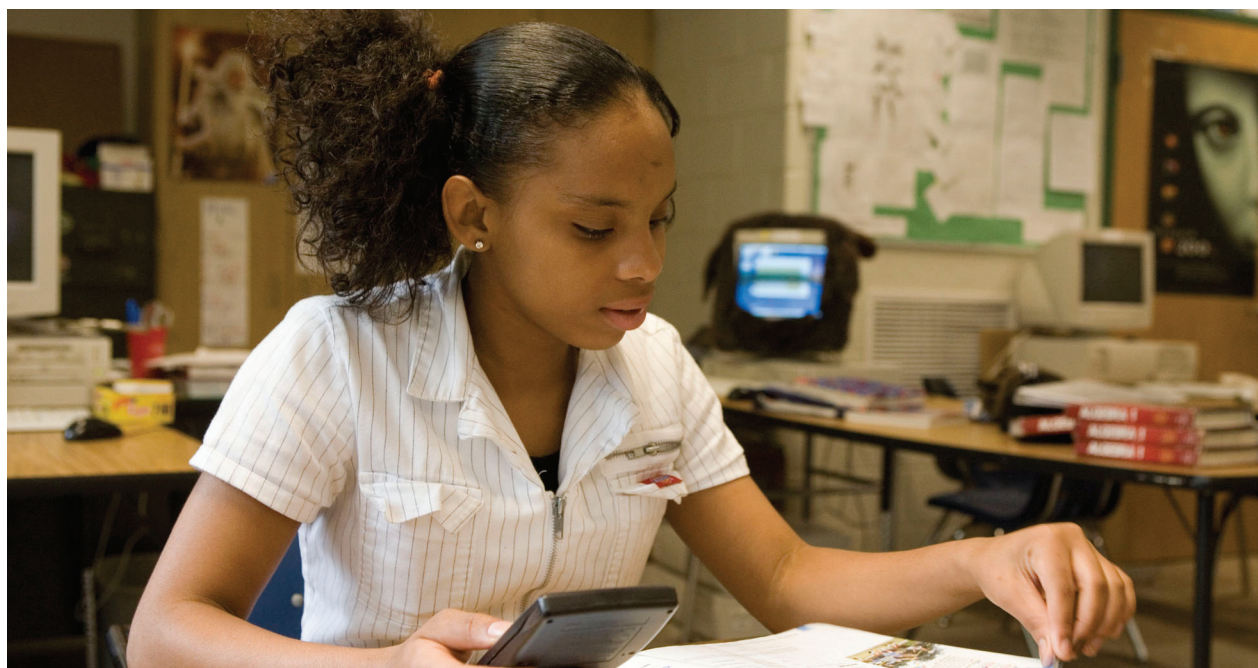
Latin Academy

2013 Performance Demographic

	Black (n=92)	Black (n=90)
<i>Subject</i>	<i>% Meets & Exceeds</i>	<i>% Exceeds</i>
Reading	98	36
ELA	91	29
Math	79	16
Science	51	2
Social Studies	60	8

	Students w/ Disabilities (n=10)	Students w/o Disabilities (n=82)	Disabilities Gap
<i>Subject</i>	<i>% Meets & Exceeds</i>	<i>% Meets & Exceeds</i>	<i>% Meets & Exceeds</i>
Reading	n/a	n/a	n/a
ELA	80	93	-13
Math	n/a	n/a	n/a
Science	30	54	-24
Social Studies	40	62	-22

LATIN
ACADEMY





Principal: Mr. Duke Bradley

Enrollment: 660

Serves: Kindergarten through 8th Grade

Wesley International Academy



Principal: Mr. Duke Bradley

Enrollment: 660

Grade Levels Served: Kindergarten through 8th

APS Overall 2013 CRCT Ranking:

Reading: 10th out of 53

ELA: 10th out of 53

Math: 11th out of 53

Science: 12th out of 53

Social Studies: 15th out of 53

Enrollment Demographics:

Free & Reduced Lunch: 58.27%

Students with Disabilities: 6%

Asian/Pacific: 1.25%

Black: 74.8%

Hispanic: 5.16%

Multi-Racial: 5%

White: 14%

Wesley International Academy is a candidate school for the International Baccalaureate Program for the primary and middle school grade levels. The school is pursuing authorization as an IB World School. Wesley explores and celebrates cultural differences in an academically challenging, nurturing and intentionally multi-ethnic environment. Wesley students incorporate a second language (Chinese Mandarin) into their everyday lives beginning in Kindergarten. The goal is to encourage the children to develop into global thinkers and life-long learners, in a diverse and flexible environment, and to offer a unique alternative in education within the Atlanta Public School district.

In general, Wesley International has shown steady progress in performance on the CRCT assessments. On 28 of the 30 administered CRCT subject assessments in 2012, Wesley's performance was higher than the district. However, the school's Grade 5 performance has declined, over the past 4 years, in all subjects.

Demographic gap analyses identify performance gaps for black students in science and social studies. In addition, students receiving free or reduced price lunch are less likely to exceed on the CRCT assessments than their counterparts.

Wesley International Academy CRCT Results (2009 - 2013)

% Meeting & Exceeding

	Grade 3		Grade 4		Grade 5		Grade 6		Grade 7		Grade 8	
	Wesley	APS	Wesley	APS	Wesley	APS	Wesley	APS	Wesley	APS	Wesley	APS
Reading												
2013	95.9	85.2	98.5	88.0	93.9	87.4	92.7	92.7	100.0	92.2	100.0	94.4
2012	94.5	83.8	95.8	83.3	86.8	85.1	100.0	92.2	97.4	90.2	100.0	92.1
2011	96.3	84.5	83.7	80.5	91.7	84.4	97.7	90.8	100.0	83.8	100.0	91.9
2010	90.3	81.1	87.5	81.2	79.1	80.8	98.0	85.6	84.8	82.5	96.2	89.8
2009	80.9	84.4	70.5	86.2	92.1	85.9	80.4	85.0	90.6	81.9	-	87.9
ELA												
2013	88.8	78.7	98.5	83.6	91.5	89.7	87.8	87.8	100.0	91.1	96.4	91.5
2012	93.2	83.5	98.6	85.1	89.5	89.8	97.8	88.3	100.0	91.0	100.0	92.9
2011	95.1	82.8	83.7	82.2	87.5	88.2	93.2	88.9	100.0	91.0	95.5	88.8
2010	90.3	80.2	83.3	82.7	90.7	87.7	96.0	89.7	87.9	88.8	96.2	88.4
2009	83.0	82.9	72.7	87.2	94.7	92.2	91.3	88.8	93.8	84.5	-	89.8
Math												
2013	75.5	66.4	83.6	74.3	91.5	72.0	75.6	72.0	90.7	83.3	92.9	70.2
2012	82.2	67.7	88.7	66.7	73.7	71.3	76.1	65.2	89.5	82.1	92.0	59.3
2011	87.7	69.9	68.8	68.0	85.4	76.4	62.2	62.4	92.0	79.8	68.2	65.9
2010	80.6	65.4	52.1	63.8	79.1	69.1	76.0	62.3	66.7	76.4	84.6	62.8
2009	46.8	73.1	47.7	71.5	63.2	77.0	51.1	65.4	80.6	75.1	-	65.0
Science												
2013	84.7	66.4	85.3	72.0	78.8	68.9	48.9	58.1	90.7	75.1	70.0	59.8
2012	70.3	64.9	87.8	69.8	53.7	66.8	58.7	55.3	73.2	75.2	74.1	53.8
2011	84.3	70.6	66.7	68.1	66.7	66.7	64.6	55.7	92.3	72.1	63.6	51.1
2010	75.8	69.4	66.7	72.1	67.4	68.6	54.0	55.4	72.7	70.4	73.1	52.4
2009	68.1	75.0	52.3	75.9	86.8	74.4	53.3	55.6	78.1	65.1	-	49.5
Soc Studies												
2013	85.7	74.9	83.8	69.6	81.2	69.8	48.9	62.5	69.8	71.3	53.3	63.4
2012	69.9	71.1	93.2	67.1	65.9	63.6	65.2	56.1	63.4	61.0	81.5	58.7
2011	89.2	77.2	56.9	69.7	64.6	65.1	62.5	60.3	76.9	61.5	59.1	60.8
2010	77.0	70.3	77.1	64.6	58.1	64.0	66.0	50.4	63.6	54.3	76.9	55.3
2009	70.2	70.3	45.5	64.5	78.9	65.5	N/A	N/A	N/A	N/A	-	51.1

Source: CRCT Georgia Department of Education School and District Summary Reports



Wesley International Academy

2013 Performance Demographic

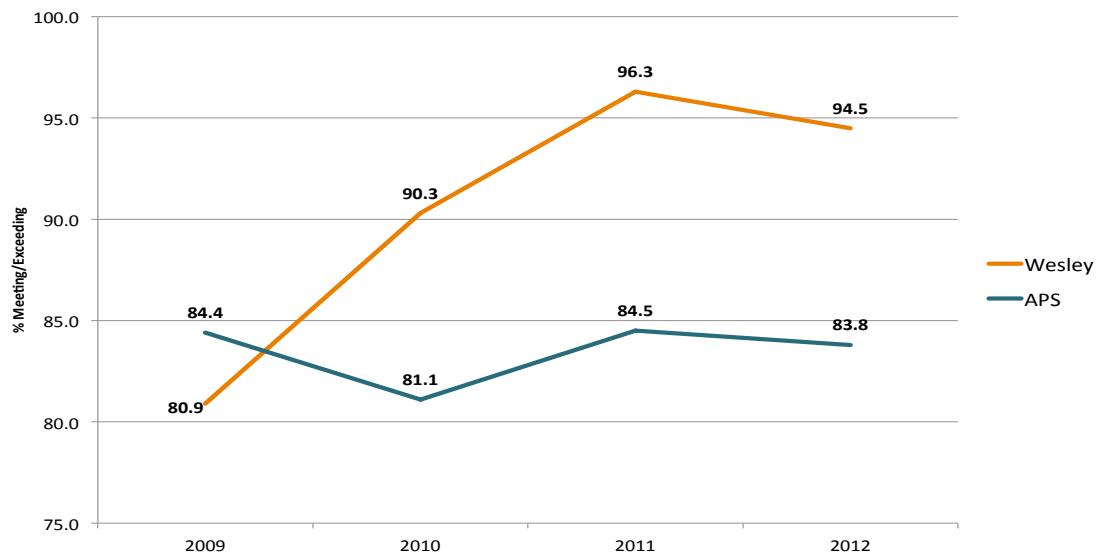
INTERNATIONAL ACADEMY

WESLEY

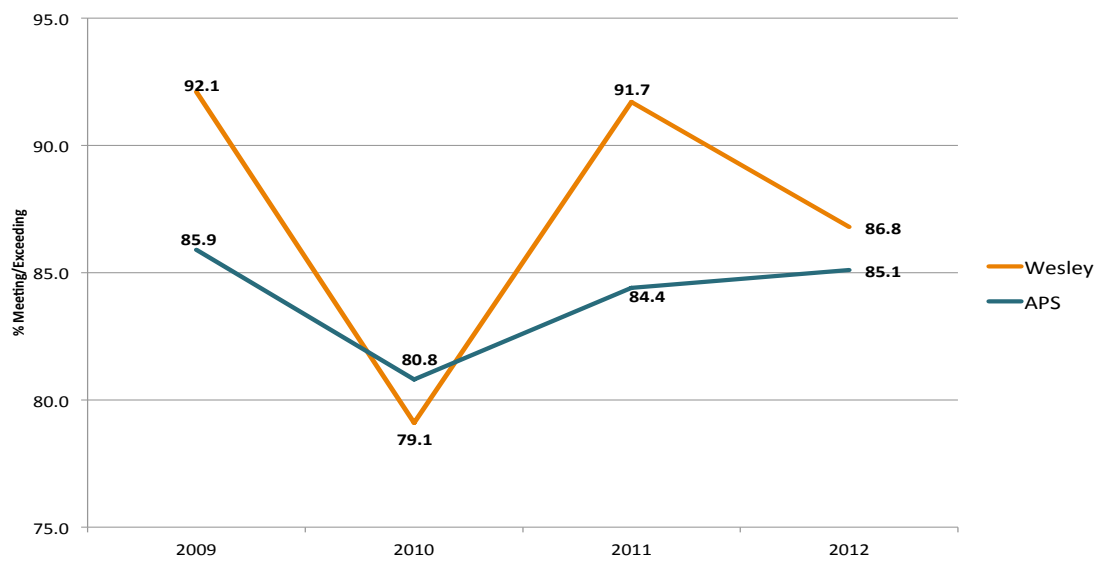
	Black (n=295)	White (n=30)	Hispanic (n=19)	Multiracial (n=20)
<i>Subject</i>	<i>% Exceeds</i>	<i>% Exceeds</i>	<i>% Exceeds</i>	<i>% Exceeds</i>
Reading	41	93	37	70
ELA	42	80	16	55
Math	34	87	32	60
Science	23	90	10	55
Social Studies	21	83	20	55

	Students w/ Disabilities (n=21)	Students w/o Disabilities (n=348)	Disabilities Gap
<i>Subject</i>	<i>% Meets & Exceeds</i>	<i>% Meets & Exceeds</i>	<i>% Meets & Exceeds</i>
Reading	82	97	-15
ELA	73	94	-21
Math	55	85	-30
Science	33	81	-48
Social Studies	29	79	-50

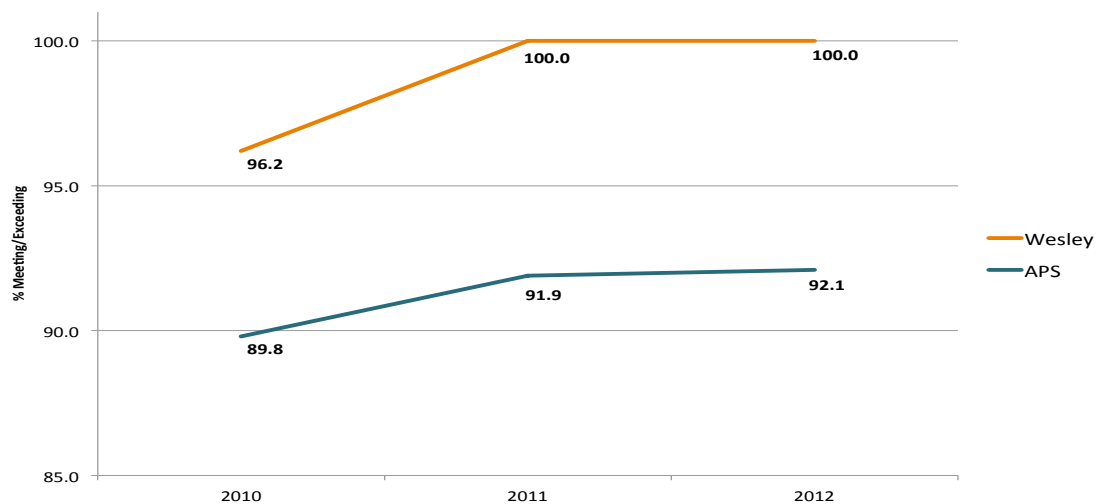
**Comparative Grade 3 CRCT Reading
(2009 - 2012)**



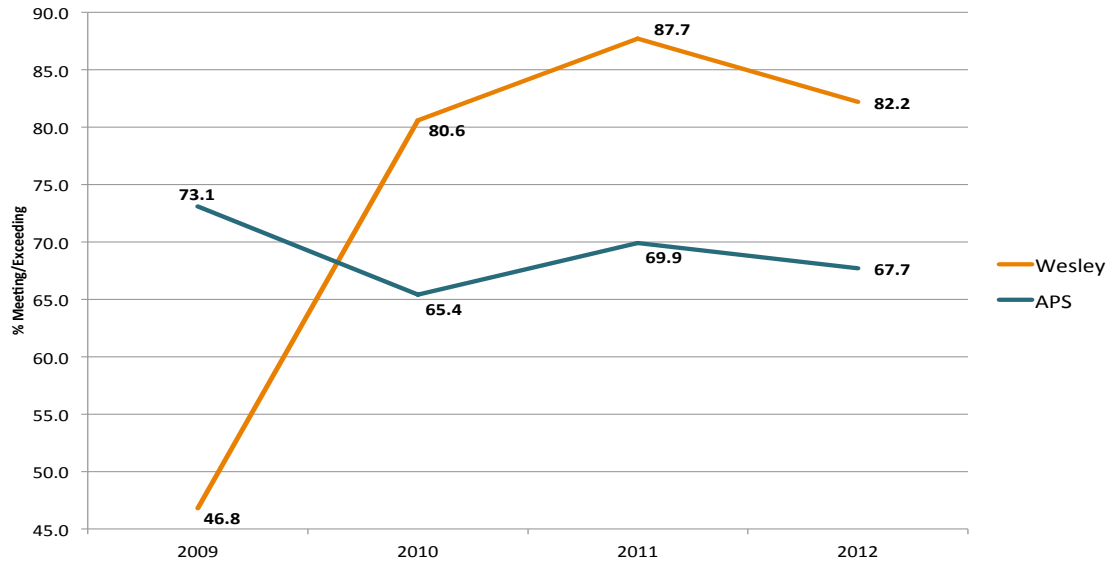
**Comparative Grade 5 CRCT Reading
(2009 - 2012)**



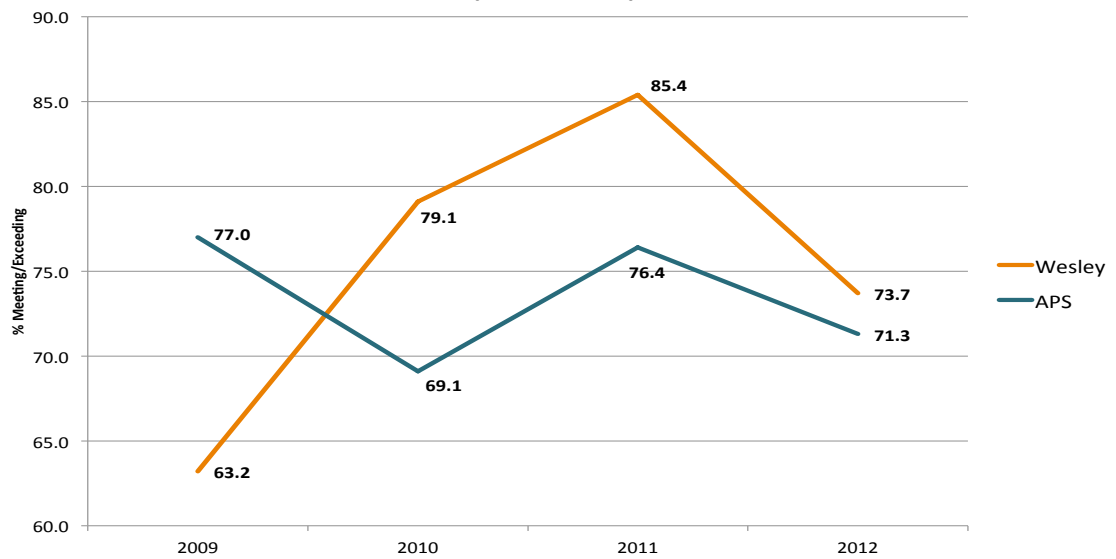
**Comparative Grade 8 CRCT Reading
(2010 - 2012)**



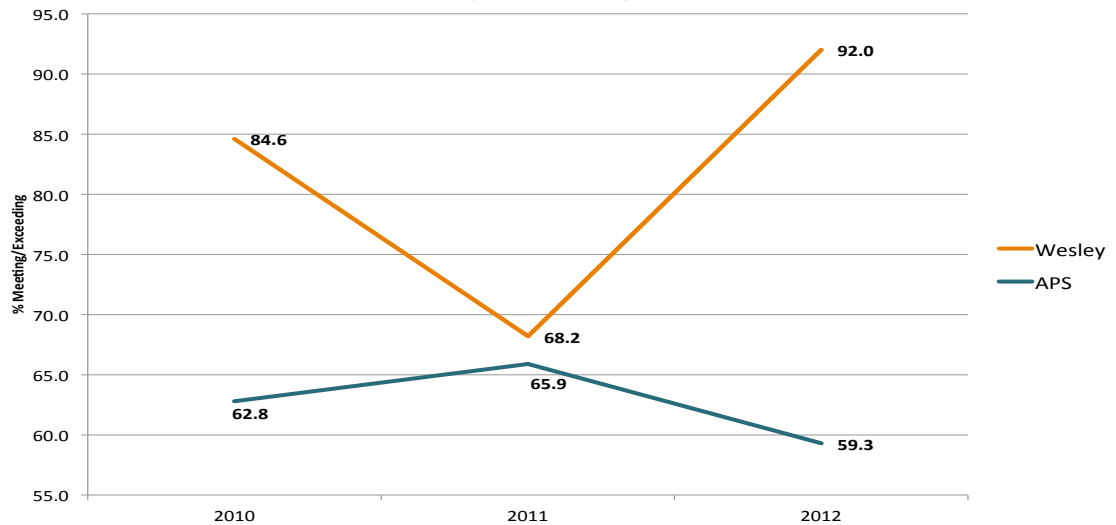
**Comparative Grade 3 CRCT Math
(2009 - 2012)**



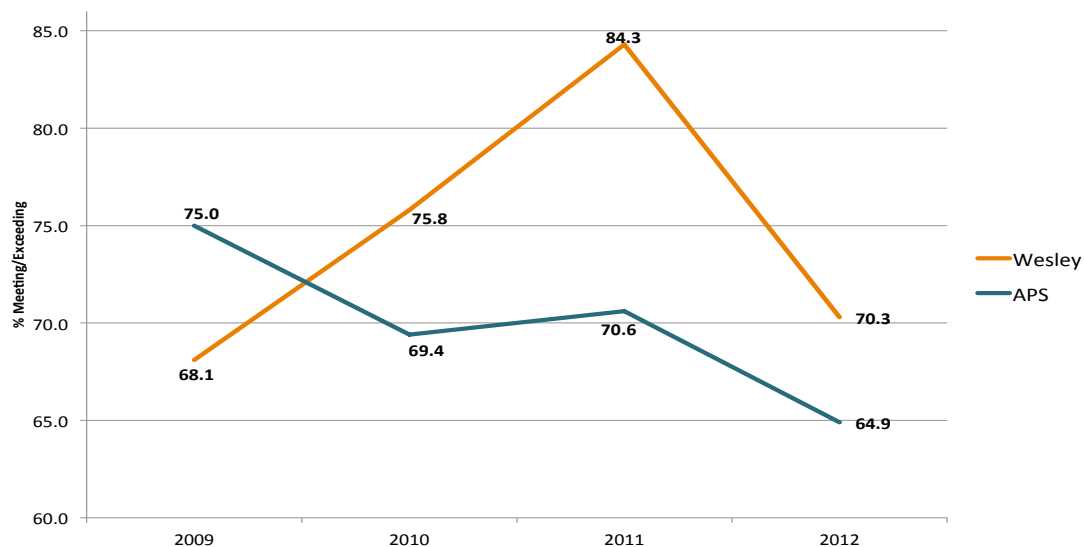
**Comparative Grade 5 CRCT Math
(2009 - 2012)**



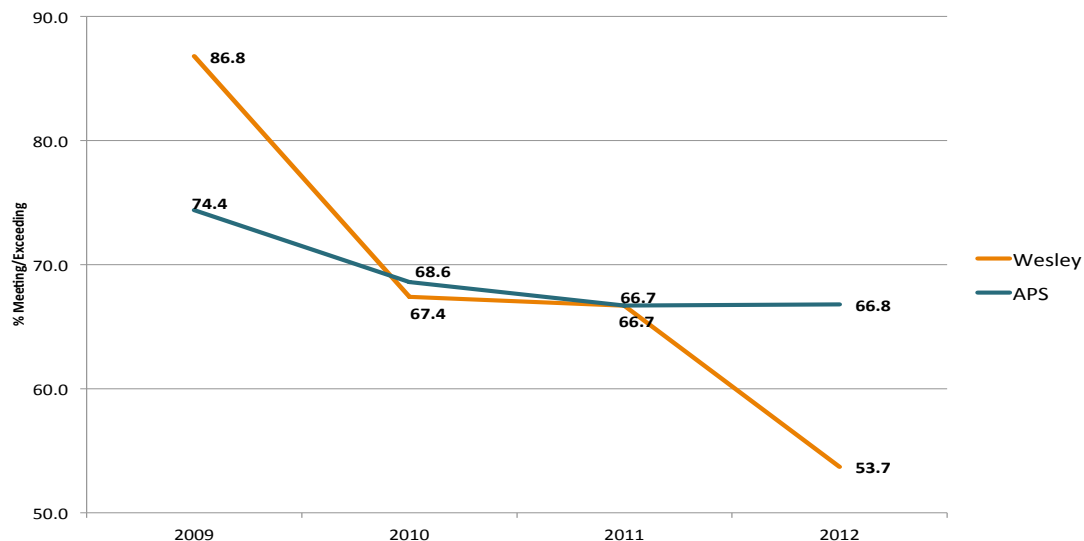
**Comparative Grade 8 CRCT Math
(2010 - 2012)**



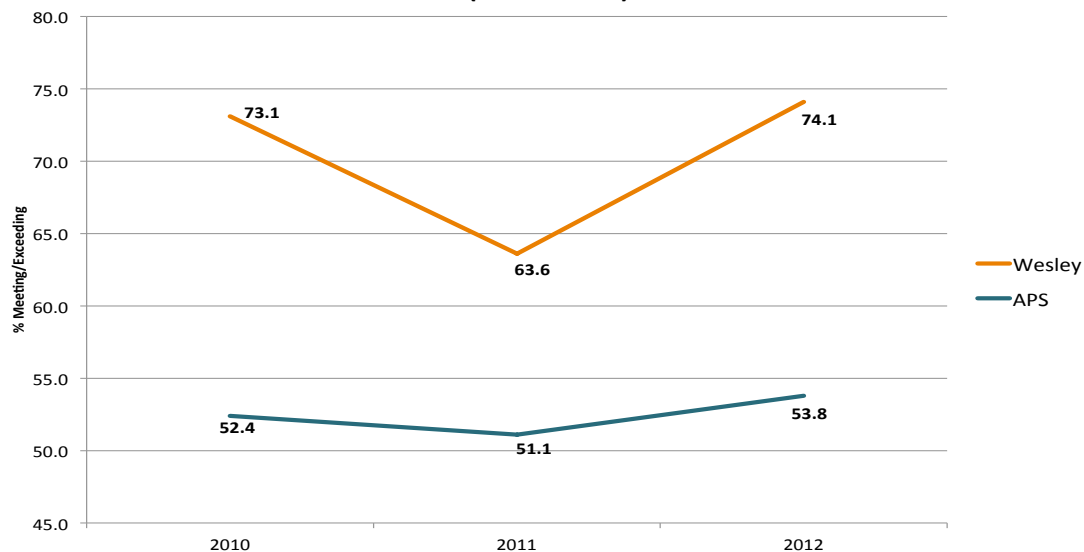
**Comparative Grade 3 CRCT Science
(2009 - 2012)**



**Comparative Grade 5 CRCT Science
(2009 - 2012)**



**Comparative Grade 8 CRCT Science
(2010 - 2012)**



Source Notes

Unless otherwise noted on the school description pages, data presented in this report came from analysis of the following source materials:

Enrollment:

Georgia Department of Education,
Student Enrollment by Grade Level (PK-12)

Grade Levels Served:

Georgia Department of Education,
Student Enrollment by Grade Level (PK-12)

APS 2013 CRCT Ranking

Georgia Department of Education,
CRCT Statewide Scores - 2012 School Summaries

Student Demographics:

Georgia Department of Education,
Free and Reduced Price Meal Eligibility

Georgia Department of Education,
Enrollment by Race/Ethnicity, Gender and Grade Level (PK-12)



Atlanta Public Schools
Office of Innovation
130 Trinity Avenue
Atlanta, GA 30303
404.802.2864

Allen Mueller
Executive Director
amueller@atlantapublicschools.us

Gayle Burnett
Manager of Data and Compliance
gburnett@atlantapublicschools.us

Tara Mitchell
Research Associate
tdmitchell@atlantapublicschools.us

Amber Brittian
Administrative Assistant
aabrittian@atlantapublicschools.us

www.atlantapublicschools.us/charterschools