



PARENT CHAT

3RD QUARTER FACE TO FACE

JANUARY 19, 2021

TITLE I PARENT MEETING

CAROLINE BROWN

TERUKO DOBASHI-TAYLOR

PRINCIPAL

ASSISTANT PRINCIPAL

WELCOME

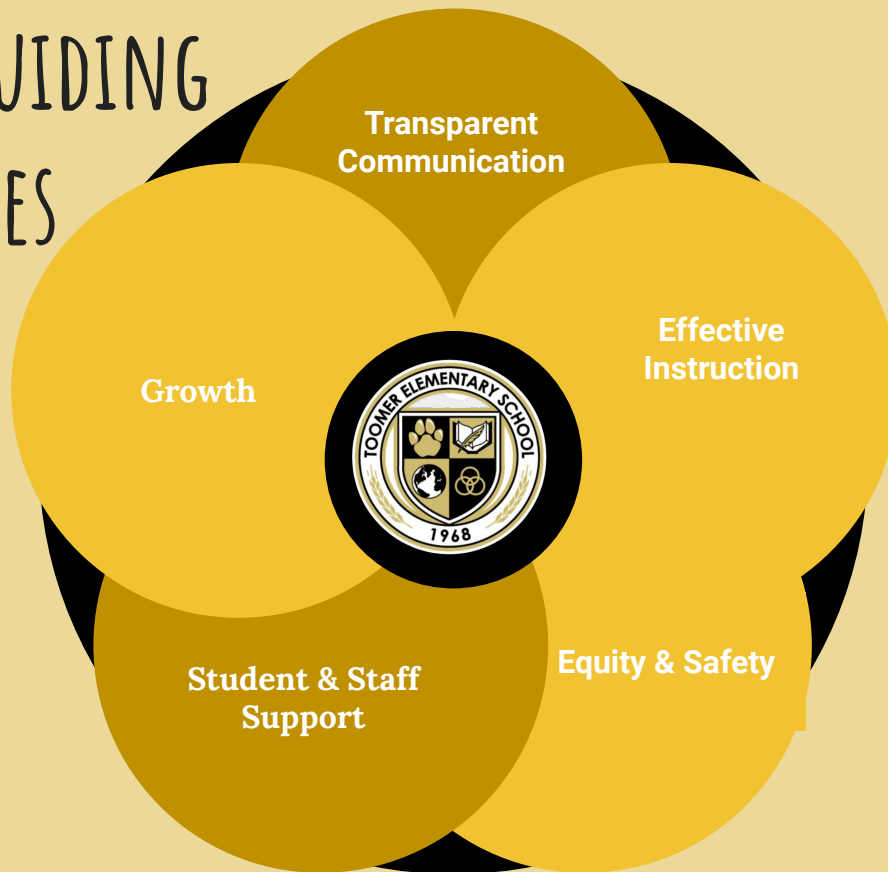
FORMAT

As each section is presented questions will be asked in the chat.

Questions for the good of the group will be answered after the section.

Questions that will be answered later in the presentation will be skipped.

REOPENING GUIDING PRINCIPLES



Phase II Re-Opening

Students Phased-in (Face 2 Face Instruction)

January 25th - PreK-2 and Special Education (Low Incidence - PreK-12) students return to Face 2 Face

February 1st - Grades 3-5, 6, 9, 10 students return to Face 2 Face

Asynchronous Wednesdays remain for the rest of the year

Traditional school hours begin January 25th for Elementary - PreK-5 including Sp. Ed. (Low Incidence)

Elementary

8:00 a.m.- 2:30 p.m.

Face 2 Face and Virtual

Phase II Re-Opening

Already in place....

- **COVID-19** Safety guidelines and protocols
- Parent Declaration of Intent Process (**December 3rd -21st**)
- Staffing/Telework guidelines
- Instructional Models
 - Site based virtual
 - Face-to-Face
 - AVA or AVA Jr

ASYNCHRONOUS DAYS

- All Wednesdays are **asynchronous** beginning **December 2nd** until the end of the semester-**May 2021**

Asynchronous Wednesdays...

Students- Independent Practice

Staff- Professional Learning, Intervention

District- Meal Delivery, Deep Cleaning, COVID Testing⁷

Third Quarter

- 132 students Face 2 Face
- 6 simultaneous classrooms with 2 instructional staff members (K-1)
- 7 Face 2 Face classrooms
- 8 virtual classrooms
- 2 simultaneous low incidence classroom with 2 staff members (DSE)
- 2 simultaneous small group resource classrooms (DSE)
- 253 Virtual students

Schedule

- Individual schedules will be pushed out from classroom teachers Wednesday.
- Face 2 Face schedule will be a typical day with lunch and recess
- Virtual schedule will have small group instruction throughout the day. This will allow students not in teacher directed small group to step away from the screens for an extended amount of time. This will require students to return at their appointed time.

HEALTH & SAFETY

KEY MITIGATION STRATEGIES

1

Masks

Encourage consistent and correct use of face masks, by all students, teachers, and staff to prevent SARS-CoV-2 transmission through respiratory droplets.

2

Social Distancing to the extent Possible

Maintain a distance of at least 6 feet between people.

3

Hand hygiene & Respiratory Etiquette

Reinforce handwashing with soap and water for at least 20 seconds and increase monitoring to ensure adherence among students and staff.

4

Cleaning & Disinfection

Clean and disinfect frequently touched surfaces (e.g., playground equipment, door handles, sink handles, toilets, drinking fountains) within the school and on school buses at least daily or between use as much as possible.

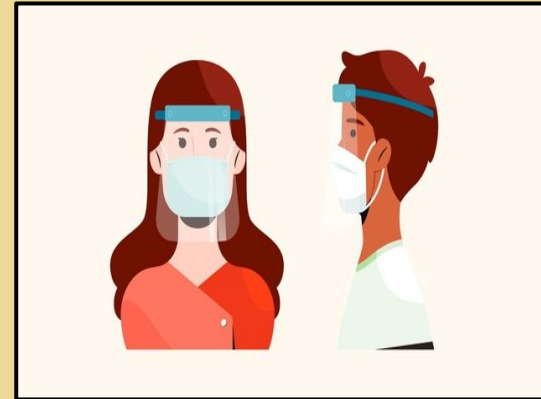
5

Contact Tracing

Systematic contact tracing of infected students, teachers, and staff in collaboration with local health department.

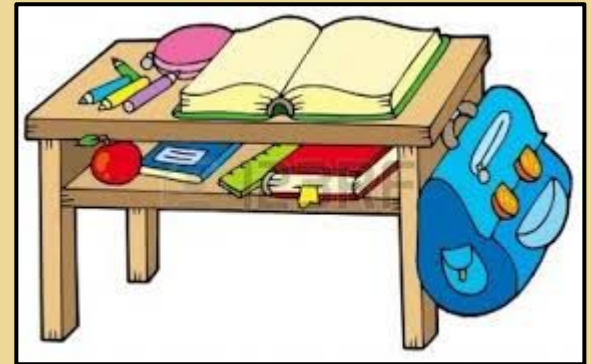
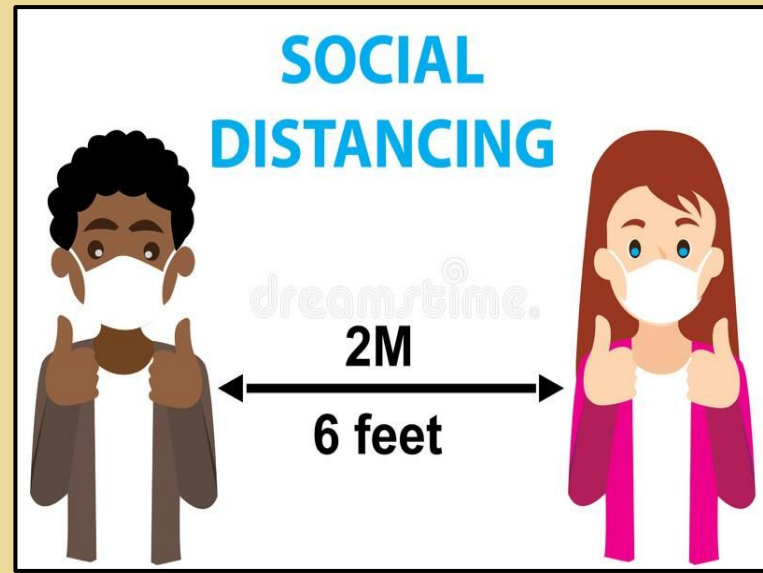
MASKS

- The school will provide masks and face shields to every student and staff member as needed. (*Shields to keep students and staff safe during eating breakfast and lunch*)
- Proper mask and shield etiquette will be reviewed and revisited by the nurse often.
- Teachers will keep a close eye on students to ensure they keep their mask on appropriately the entire time.



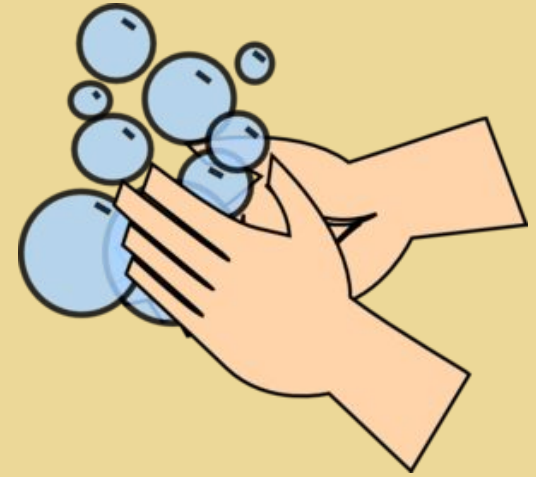
SOCIAL DISTANCING

- 6 ft indicators will be placed throughout the building and in each classroom.
- Individual desks will be used in classrooms.
- Students will be provided individual supplies, so sharing bins or storage containers will not be necessary.



HAND HYGIENE & RESPIRATORY

- Daily education around proper handwashing, coughing procedures, and hand sanitizing will be provided during the SEL block & revisited during the nurse's visit.
- Hand disinfectant stations have been placed strategically throughout the building.
- Deep cleaning of all hard surfaces and touch points.



CLEANING & DISINFECTANT

- After each scheduled restroom break, custodians will clean each stall with disinfectant.
- All teachers/classrooms will be provide with cleaning supplies to sanitize personal and student desks during the day.
- Deep cleaning will occur every night and will be inspected by a member of the admin team prior to the start of each instructional day.



PROCESS FOR TRACKING & TRACING COVID-19 CASES



ATLANTA
PUBLIC
SCHOOLS



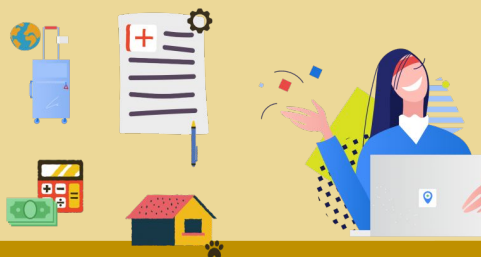
Two-way communication with local boards of health for surveillance and tracking of self-reported cases to the school-district as applicable.

OPERATIONS

ACCESS

- Visitors are not allowed in the building. This includes extended families and volunteers.
- APS support personnel must report to main entrance (badge readers have been disabled) which is monitored by staff to complete screening before entering.
- Entry only through the main doors.
- When necessary for people to wait patiently outside, walk way is labeled for social distance.
- Only 2 people are allowed in the front office at any given time, others will wait outside labeled with social distance markers.
- All students will be screen prior to entering the building.

STUDENT OPERATIONS



Nurse Rachel will travel to classrooms

Arrival

BUS: No earlier than **7:30 AM**
Students will be screened by an adult and *escorted by grade level*.
Students who exhibit symptoms will be escorted to the CARE room.

CARPOOL: **7:45 AM** Students will be advised to stay in the car until their temperature is taken.

Students will pick up breakfast and then report to classroom.

Work Day

(13) Student Desks: Desks will be socially distanced by 6 ft. and will be supplied with command hook to hang personal belongings

All specials and student support services will follow social distancing guidelines

Lunch in the cafeteria
Restroom breaks and recess will be scheduled by individual classes.

Dismissal

Students will be dismissed in a staggered manner.

Carpool will start at 2:45 PM

Students should bring all personal items home every day.

CLASSROOM SETUP

- Desk will be placed and floors marked for social distance. At this point we are planning on 6ft or 13 students per classroom.
- All extraneous materials have been removed.
- Students will stay in cohorts
- Enrichments teachers will teach in classrooms to limit cleaning between groups. Students will go outside when possible for PE.
- Classrooms are assigned a support person who will assist as needed with lunch, restroom, and emergencies.

INSTRUCTION

- Focus for instruction this year has been on collaboration and improving our practices.
- We have strong grade level teams and classes use the same slide deck and instructional materials.
- Current planning structure works whether virtual or F2F.
- Grade levels already analyze student work as a grade level and communicate strengths and concerns.

INSTRUCTION

Second Semester instruction includes:

- Mixing of students as we target small group instruction.

What this means...

- Some Face 2 Face students will have virtual small group instruction
- Some virtual students will have different virtual teachers throughout the day.
- Decisions based on student data that is currently being analyzed by teachers.

INSTRUCTION: F2F

Schedule will be from 8:00 until 2:30 with staggered arrival and dismissal (with the addition of recess, lunch break, restroom break, guided reading groups and independent work).

Instructional schedule will be much like it is during the regular school with the following exceptions:

- Restroom breaks scheduled with all children highly encouraged to use the restroom. (students will bring books for independent reading while sitting in the designated spot to wait their turn)

LUNCH

Students will be seated 6 feet apart. Each student will be protected by a desk shield (seen here). Individually packed hot lunches will be delivered daily from a third party site.



OTHER INSTRUCTION

GATE:

At this time all GATE classes will remain the same. Students will log on with headphones and join class. This will be revisited as we know numbers.

DSE:

Small group DSE students will be Face 2 Face during their regularly scheduled time with simultaneous instruction with 2 staff members.

STUDENT DRESS

- **Mask are required at all times.** Staff will provide ongoing instruction on mask wearing.
- Toomer is a uniform school with khaki bottoms and black, gold (yellow) or white tops.
- Toomer is providing face shields for all students and staff.

WHAT IF...

CARE ROOM

CARE Area: Stage

- A designated well-ventilated quarantine location will be accessible to students until a parent/guardian arrives.
- The designated space will be equipped with sanitizable cots & privacy curtains.
- The student or staff will be monitored at all times by the nurse or other staff gowned in full PPE until the parent/guardian arrives.
- Parents/Guardians will be asked to pick students up from the **side cafeteria door** including siblings of the student exhibiting symptoms.

The CARE area and suspected staff member's or student's work area/classroom must be thoroughly cleaned and disinfected, in addition to all other common surfaces recently touched by the employee or student.

COVID-19 PROCEDURE FOR (+) CASES

1. Notify your child's classroom teacher and/or school administrator if a student/family member has tested positive
2. Stay home if student feels ill or shows symptoms. You may join virtual class.
3. Follow guidelines from healthcare providers
4. District prepares and distributes letters to parents & starts contact tracing
5. District consults with local boards of health
6. Determination of who needs to be quarantined & if partial closure is necessary
7. Health Services will contact families if exposure

COVID-19 TESTING

- Students, teachers, and staff with symptoms identified through the health screening protocols
- Students, teachers, and staff who have had contact with someone with COVID-19 in the school or workplace
- All students, faculty, and staff with possible exposure in the context of outbreak settings
- Working with Whitefoord Clinic to provide testing... updates forthcoming

SYMPTOMS MONITORING

Discontinue Home Isolation if:

- At least 10 days have passed since symptoms first appeared and
- At least 24 hours have passed since last fever without use of fever-reducing medication and
- Symptoms (e.g, cough, shortness or breath have improved)

IF UNDER QUARANTINE

Under quarantine due to exposure...

- Student not ill, student may join virtual class.
- Student ill and not able to join, student will be absent.
- If the entire classroom is in quarantine, teacher will resume instruction virtually.
- If teacher unable to provide instruction a school based substitute will be provided.

REMEMBER

- If you are sick STAY HOME
- Report all exposure to COVID-19
- If under quarantine you may continue with virtual school
- Communication with health services if exposed at school



We are ready and
excited!

We can do this safely!

Please remember you can
declare for fourth
quarter at the end of
February.