



**STRONG SCHOOLS  
START WITH ME!**

# Meeting Minutes

## Call to order

A meeting of the GO Team for Burgess-Peterson Academy was held at BPA's Media Center on November 9, 2017

## Attendees

Attendees included.

Lewis Cartee	Geri Thomas	Jeanne Fore	
David White	Melanie Searcy	Tracy King-Holmes	Marc Takacs
Aretta Baumgartner	Mary Santanello	Asiaa Karriem	Sophia Miles

## Members not in attendance

Members not in attendance included.

Sue Ellen Wortzel			

Is there are quorum present? Circle or highlight Yes or No

## Changes Made to Minutes

1. NA

Minutes approved? Circle or highlight Yes or No

It was motioned by Jeanne Fore and seconded by Geri Thomas to approve the minutes for the last meeting. It was a unanimous decision to approve the minutes.

## Discussion Items

Burgess-Peterson GoTeam Survey Results from Southern Education Foundation

See Attachment 1

## Strategic Plan Review and Grading

The priorities of our Strategic Plan are the following:

1. Strengthen Early Literacy Program
2. Become an Authorized IB PYP World School
3. Increase Lexile Levels for 3<sup>rd</sup> and 5<sup>th</sup> Graders
4. Implement APS Great Eight Instructional Practices
5. Improve Teacher Efficacy in IB, Literacy Development and other Core Content Areas
6. Build systems and resources to support IB implementation
7. Inform and engage the school community
8. Foster a positive, informed and engaged school culture

We looked at each of our priorities and talked about our status. We assigned ourselves Green, Yellow, or Red to show whether we were making progress towards meeting our goals on our strategic plan. The only area that we thought truly needed addressing was building community awareness, knowledge and support for IB PYP. Lewis has been giving school updates at Community Meetings. We also talked about having parent informational meetings.

## New CCRPI Results

*\*See Attachment #2 entitled Key Performance Indicators Update: CCRPI Results.*

*\*Components of the CCRPI include Achievement Points, Progress Points, Achievement Gap Points and Challenge Points.*

**STRONG SCHOOLS  
START WITH ME!****\*BPA CCRPI Score Over Time**

2012: 52.8    2013: 85.2

2014: 78.4    2015: 74.3

2016: 80.5    2017: 82.1

**\*We maintained our lead over Bolton, E. Rivers, Wesley and Atlanta Classical.****\*Overtook ANCS, Garden Hills and Sarah Smith****\*Moved from 13<sup>th</sup> to 9<sup>th</sup> among all APS Elementary Schools**

---

**Action Item: No Action Items****Information Items**

**Public Comment:** Pam McNall presented information on a Character Education and SEL Curriculum Enhancement Program called Respectful Ways. The curriculum includes 52 lesson plans for PreK-2<sup>nd</sup>, 3<sup>rd</sup>-5<sup>th</sup>, and 6<sup>th</sup> grade and up. Georgia State is monitoring the program. It works hand in hand with PBIS. Signage, rules and behavior would greet the kids as soon as they came through the threshold.

**\*See Attached Brochure**

Jeanne Fore motioned to adjourn meeting, Aretta Baumgartner seconded. The meeting adjourned at 6:54 p.m.

*Tracy D. King-Holmes*

Secretary

December 21, 2017

Date of approval

# Attachment #1

## Jackson Cluster Summary

- The majority of participants were community partners and parents/guardians
- All schools had at least 1 representative
- 61% of the participants agree with the policy of conducting GO Team meetings 5-6 times a year
- 100% of participants found the GO Teams to be beneficial
- Across the board, GO Team members believe their strengths lie in communication during the meetings and fostering a collaborative environment
- The majority of GO Teams members believe they can improve in the areas of participation and communication around planning/meeting times
- The major barrier most members experience is with the timing of meetings
- GO Teams members would like to receive additional support in best practices for a successful GO Team
- 92% of participants were interested in some type of training

## Burgess-Peterson Elementary

- Burgess-Peterson's GO Team finds the involvement of various stakeholders, conversations around strategic planning, and parent input on school decisions to be beneficial
- Members of Burgess-Peterson's GO Team believe that they excel in communication, consistency, collaboration, and focusing on agreed goals
- Burgess-Peterson's GO Team members believe they need to improve in areas of explaining unfamiliar vocabulary to various members, public participation and their understanding of GO Teams, and working with other GO Teams
- The major barrier within Burgess-Peterson's GO Team is finding the ability to attend meetings/time of meetings
- Burgess-Peterson's members would like further trainings/supports with best practices for an effective GO Team, understanding of data-driven decision making, how to effectively use flexibility waivers, understanding ESSA, and innovative ideas for schools

# Attachment # 2



ATLANTA  
PUBLIC  
SCHOOLS

## Key Performance Indicators Update: CCRPI Results

Burgess- Peterson Academy  
GoTeam Presentation  
January 19, 2017

### 2017 APS and State CCRPI Comparison

	APS	Georgia
Overall	68.3 (+3.1)	75 (+1.4)
Elementary	68.6 (+3)	72.9 (+1.2)

### CCRPI Components

Component	# of Elements	Wt./ Pts.	Elements
Achievement	3	50	<ul style="list-style-type: none"> <li>Content Mastery, Gr 3, 4, 5 GMAS</li> <li>Post E/M/H School Readiness</li> <li>Predictor for High School Graduation</li> </ul>
Progress	4	40	<ul style="list-style-type: none"> <li>Gr 3, 4, 5 ELA, MA, SC &amp; SS</li> </ul>
Achievement Gap	4	10	<ul style="list-style-type: none"> <li>Gap Size and Gap Progress</li> </ul>
Challenge Points	2	10 (Max.)	<ul style="list-style-type: none"> <li>ED/EL/SWD Performance</li> <li>Exceeding the Bar</li> </ul>

### BPA CCRPI Over Time

2012	2013	2014	2015	2016	2017
52.8	85.2	78.4	74.3	80.5	82.1

90-100	"A"
80-89	"B"
70-79	"C"
60-69	"D"
Less than 60	Failing School

2017 **COLLEGE AND CAREER READY PERFORMANCE INDEX (CCRPI)**

District: Atlanta Public Schools Title I Schools: Yes

School: Burgess-Peterson Elementary School - 0305 Grades: PK, KK, 01, 02, 03, 04, 05

Choose a Report Type:  School Score  Elementary School

CCRPI Score: Achievement Progress Achievement Gap ED/EL/SWD Performance Exceeding the Bar Performance Flags Financial Efficiency

School Climate Data Details Multi Year Summary

### CCRPI SCORE

Sum of Achievement, Progress, Achievement Gap, and Challenge Points

Achievement Points	Progress Points	Achievement Gap Points	Challenge Points: ED/EL/SWD Performance Points	Exceeding the Bar Points	Financial Efficiency Rating	School Climate Rating
33.2	-1.2	35.8	8.3	3.3	1.5	NA
				4.8		★★★★
<b>CCRPI Score: 82.1</b>						

**Legend:**  
**Achievement:** Utilizes All Indicators  
**Progress:** Utilizes Student Growth Percentiles (SGPs)  
**Achievement Gap:** Utilizes Lowest Quartile Scale Scores  
**Challenge Points:** ED/EL/SWD Performance Points + Exceeding the Bar Points (not to exceed 10 points)

### Top 10 Elementary Schools

School	Grade Band	Cluster	CCRPI
W.T. Jackson E.S.	E	NAHS	100.7
Morris Brandon	E	NAHS	98.8
Mary Lin	E	Grady	97.8
Springdale Park	E	Grady	95.8
Morningside	E	Grady	94.7
Drew Charter E.S.	E	Charter	87.9
West Manor	E	Mays	83.5
Centennial Academy	E	Charter	82.7
Burgess-Peterson	E	MJHS	82.1
Smith	E	NAHS	80.8

- Maintained our lead over Bolton 61.9, E. Rivers 79.4, Wesley 68.1, Atlanta Classical 74.2
- Overtook ANCS 79.6, Garden Hills 75.2, Sarah Smith 80.8
- Moved from 13<sup>th</sup> to 9<sup>th</sup> among all APS Elementary Schools

## CCRPI Components – Achievement (50)

Sub-components	# of Elements	Component Examples
Content Mastery	4 GMAS End of Grade (EOG)	<ul style="list-style-type: none"> <li>Weighted % scoring at or above the Developing Learner level               <ul style="list-style-type: none"> <li>Developing (.5)</li> <li>Proficient (1)</li> <li>Distinguished (1.5)</li> </ul> </li> </ul>
Post Elementary School Readiness	6 Elem.	<ul style="list-style-type: none"> <li>% of SWD served in general education classes more that 80% of the day</li> <li>% of 3<sup>rd</sup> grade students scoring at or above a lexile of 650</li> <li>% of students missing fewer than 6 days</li> </ul>
Predictor for High School Graduation	1 Elem.	<ul style="list-style-type: none"> <li>% of students scoring at the Proficient of Distinguished Learner level</li> </ul>

- Achievement counts for up to of 50 points of the total score.
- Achievement has 3 elements and between 10–17 components depending on the level (i.e., elementary, middle, and high school).

## CCRPI Components – Progress (40) and Achievement Gap (10)

Components	# of Elements	Wt./ Pts.	Component Examples
Progress	4	40%	<ul style="list-style-type: none"> <li>4 core subject areas for ES &amp; MS</li> <li>8 course exams (high schools)</li> </ul>
Achievement Gap	4	10%	<ul style="list-style-type: none"> <li>Gap Size and Gap Progress</li> </ul>

- Progress Points – measures the academic growth achieved from year to year. Schools earn points for percentage of students whose academic performance on state tests is considered typical or high compared to other Georgia students with similar test scores from the prior year.
- Achievement Gap Points – schools earn points based on (a) the average performance of the lowest 25 percent of students compared to the average performance of Georgia students statewide; and (b) the change in the achievement gap between years.



## Respectful Ways™ Curriculum Includes:

- 54 lesson plans we call Guides for PreK-2nd, 3-5th, and 6th grade up
- Five research-based activities per Guide with online interactive slides and instructions
- Animated slides with step-by-step curriculum to liven up the learning
- Ambassador Riley Ways experiences each Guide with you and grows in age with your students
- Respectful Signage™ to match each Guide to help build a permanent, positive SEL climate
- Packs of “Let’s Chat” conversation cards to spawn intimate discussions
- Original poetry on each subject to be analyzed, spoken or sung
- A heartfelt Promise pledge to be spoken together after each session
- Unique award certificates and prizes to reward positive behaviors
- Educational resources, weblinks and supplements for added value
- A rally, custom banners, lapel pins & rewards to jumpstart the excitement!



## Respectful Ways™ Online Educator Support Includes:

- A Respectful Learning Portal (RLP) for educators to log in and access materials
- Lesson plan supplements with program details for all 54 Guides with added resources & links for further educational instruction
- Detailed objectives, summaries, added suggestions and Respectful Wraps per Guide
- List of fulfilled Common Core College and Career Standards per Guide
- Six discussion forums for Educators, Parents, Administrators, Students and a general SEL discussion board
- Live and recorded webinars with award-winning educators, best-selling authors and child psychologists to gain insight on goals and earn Continuing Education Units (CEUs) accreditation
- A six-question survey to answer at the end of lesson plans to improve programming

Children deserve to learn life lessons before graduating. Contact Respectful Ways™ to learn how!

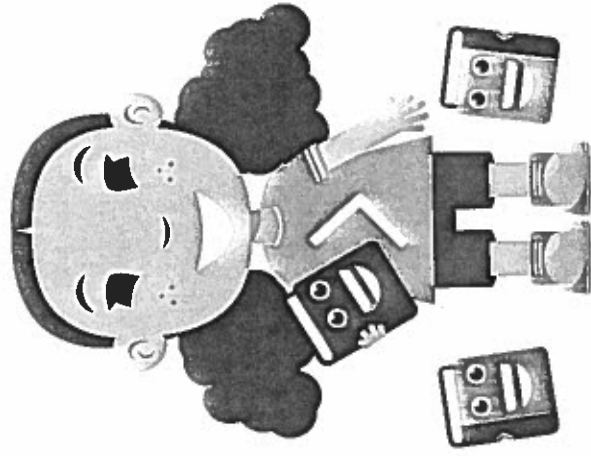
678.464.0962

pam@respectfulways.com

www.respectfulways.com



respectful ways.™



## A Character Education and SEL Curriculum Enhancement Program

*“Intelligence plus character ~  
That is the goal of true education.”*

– Martin Luther King, Jr.

Visit us online

[www.RespectfulWays.com](http://www.RespectfulWays.com)

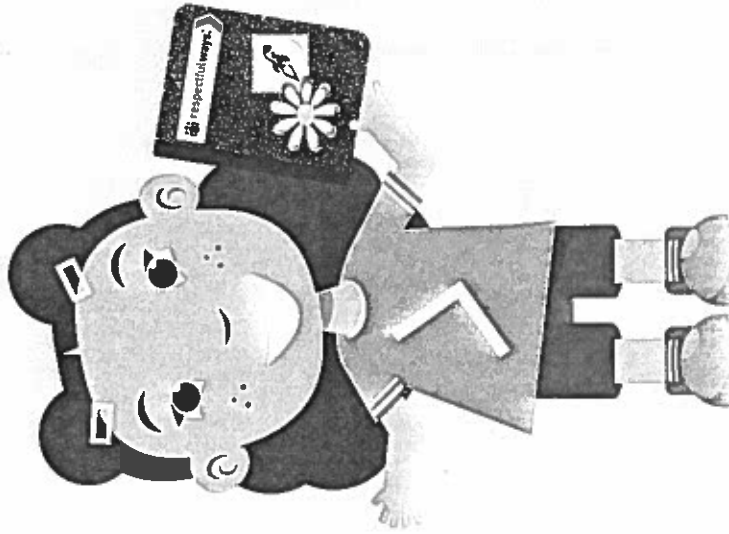
Follow us on Facebook!

[Facebook.com/RespectfulWays](https://www.facebook.com/RespectfulWays)

## Why Respectful Ways?

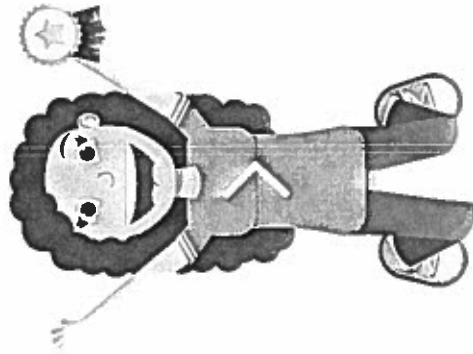
We enhance your existing curriculum by giving you the freedom to strategically lay out our lesson plans over the 36-week school year, with 18 unique Curriculum Guides for three different age groups, to be assimilated every two weeks.

Our children deserve a balanced education, including hands-on knowledge for how to live a respectful life!



## Our Programs Is All Encompassing

We're your wingman in the classroom for grades Pre-K through 12th and your helping hand online when you need detailed SEL curriculum, activities, resources and guidance.



## A Groundbreaking Social-Emotional Education Program

We use pop-culture trends such as emojis, speech bubbles, rhymes & rewards to keep children intrigued. We promote personal inner-strength by giving them ownership of their learning.



LOOK ON THE  
**BRIGHT**  
SIDE OF THINGS

just fine here.

## Join Respectful Ways!

We have grant and funding opportunities to bring your school or camp on board at minimum cost to you.



## Book A Meeting

Contact Respectful Ways Founder Patra McNall to book a conference call and learn more about this influential SEL/soft-skills learning program.

[patra@RespectfulWays.com](mailto:patra@RespectfulWays.com)  
(678) 464-0962



**TEAMWORK  
MAKES THE  
DREAM WORK**

just fine here.